

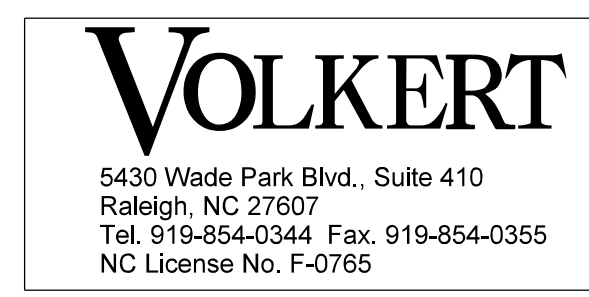
## PHASING NOTES

### 400433 BRIDGE PRESERVATION

- STEP 1:       INSTALL DETOUR ACCORDING TO TMP-2A THRU TMP-2F
  
- STEP 2:       CLOSE BRIDGE 400433 ACCORDING TO TMP-4 & TMP5.  
CONTRACTOR MAY BEGIN PRESERVATION WORK ON DECK.
  
- STEP 3:       USING TMP-5, TMP-6, RSD 1101.01 SHEET 1 OF 3  
AND RSD 1101.02 SHEET 4 OF 14 CONTRACTOR MAY  
CLOSE ONE LANE AT A TIME IN EACH DIRECTION ON  
I-40 AND MAY BEGIN PRESERVATION WORK ON THE UNDER  
SIDE OF DECK, GIRDERS, AND SUBSTRUCTURE.  
SEE RSD 1101.11 SHEETS 1 THRU 4 TO AID IN  
TRAFFIC CONTROL OPERATIONS.
  
- STEP 4:       ONCE BRIDGE PRESERVATION WORK IS COMPLETE, REMOVE  
ALL WZTC SIGNS AND DEVICES ON NC 903 SB &  
NC 903 NB/NC 24 EB, OPEN BRIDGE 400433 TO TRAFFIC,  
THEN REMOVE DETOUR ON I-40.

### 700219 BRIDGE PRESERVATION

- STEP 1:       CLOSE ONE LANE AT A TIME ON BRIDGE 700219 USING  
TMP-7 AND RSD 1101.02 SHEET 14 OF 14. CONTRACTOR  
MAY BEGIN PRESERVATION WORK ON DECK.
  
- STEP 2:       USING TMP-6, TMP-7, RSD 1101.01 SHEET 1 OF 3  
AND RSD 1101.02 SHEET 4 OF 14 CONTRACTOR SHALL  
CLOSE ONE LANE AT A TIME IN EACH DIRECTION ON  
I-40 AND MAY BEGIN PRESERVATION WORK ON THE UNDER  
SIDE OF DECK, GIRDERS, AND SUBSTRUCTURE. SEE RSD  
1101.11 SHEETS 1 THRU 4 TO AID IN TRAFFIC CONTROL  
OPERATIONS.
  
- STEP 3:       ONCE BRIDGE PRESERVATION WORK IS COMPLETE, REMOVE  
ALL WZTC SIGNS AND DEVICES, AND OPEN BRIDGE 700219  
TO TRAFFIC.

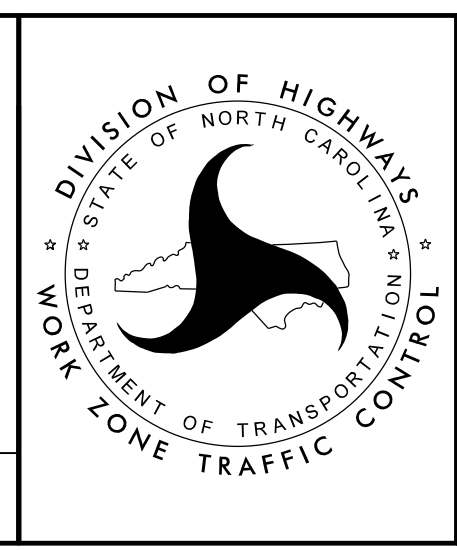
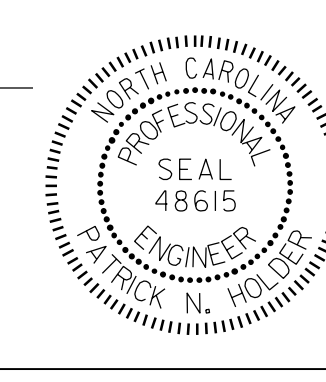


APPROVED: \_\_\_\_\_

DATE: \_\_\_\_\_

DocuSigned by:  
*Patrick Holder*       SEAL  
31822A238FC7473...  
12/28/2020

**DOCUMENT NOT CONSIDERED FINAL  
UNLESS ALL SIGNATURES COMPLETED**



**TRANSPORTATION  
OPERATION  
PLAN**