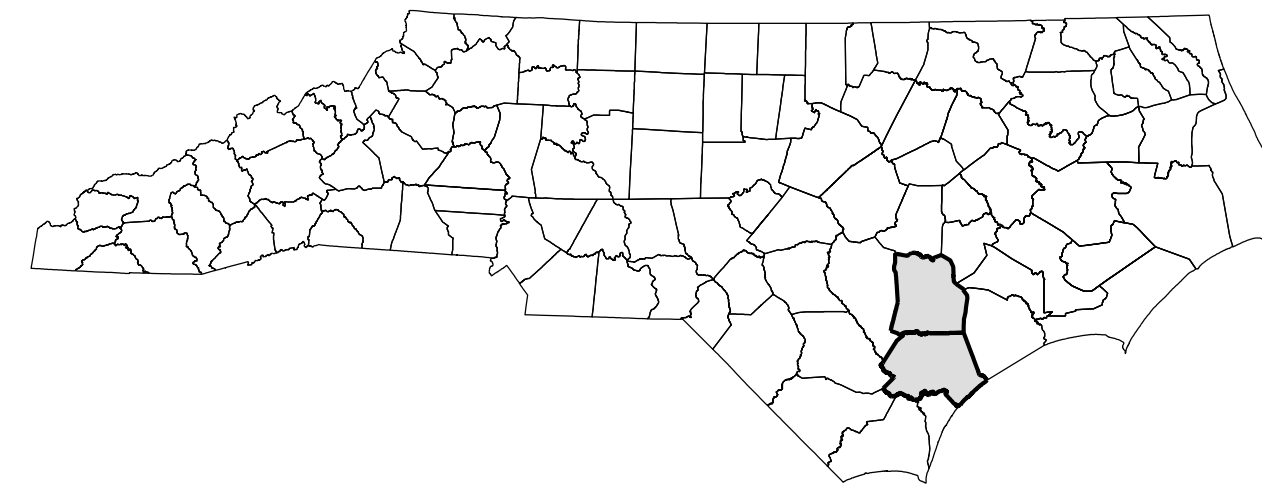


STATE OF NORTH CAROLINA  
DIVISION OF HIGHWAYS

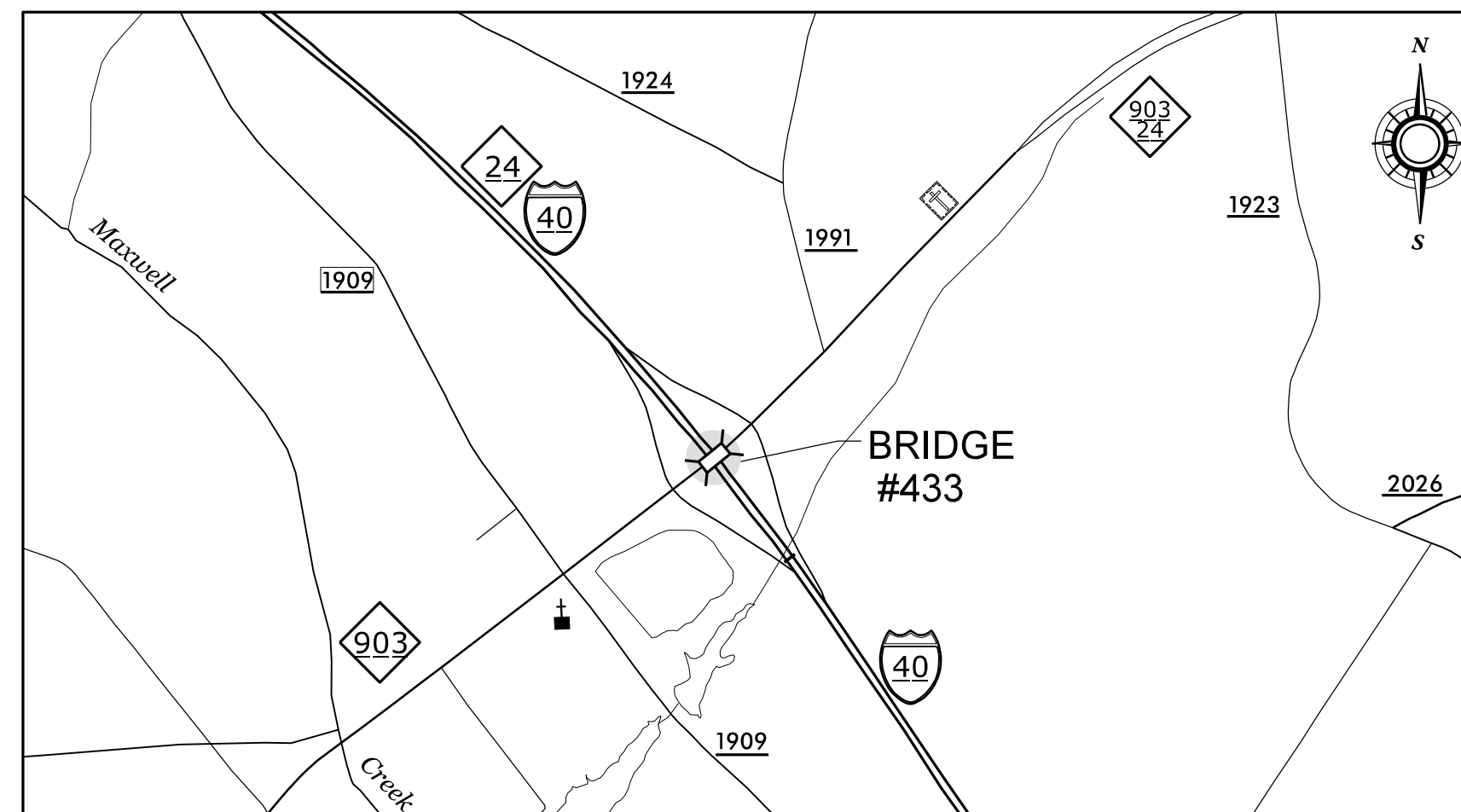
**TRANSPORTATION MANAGEMENT PLAN**

**DUPLIN & PENDER COUNTY**

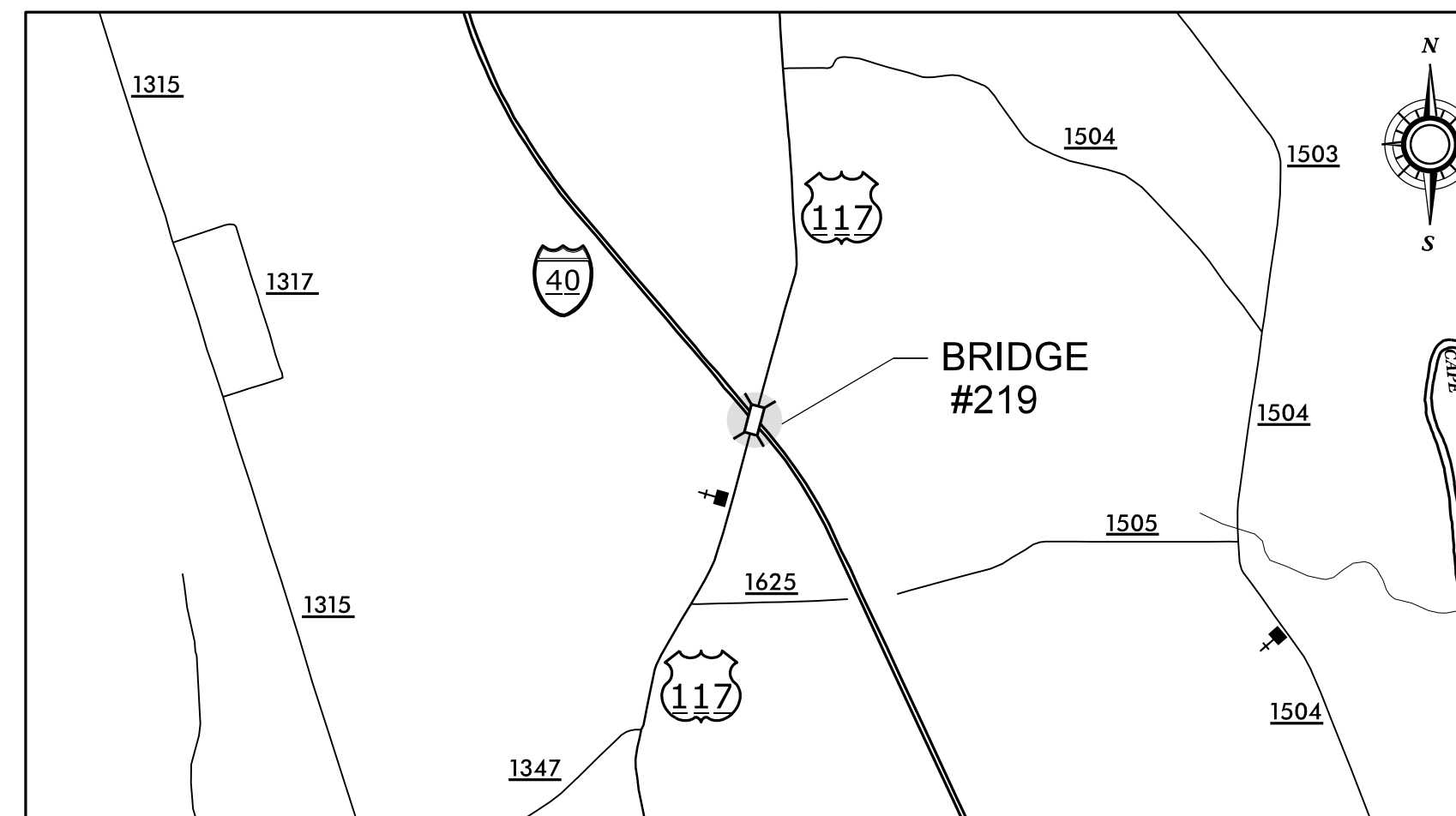


LOCATION: DUPLIN COUNTY:  
BRIDGE #433 OVER I40 ON NC 903 BETWEEN SR 1909 (JOHN WILLIAMS EVANS RD) AND SR 1991 (BRINSON RD).  
  
PENDER COUNTY:  
BRIDGE #219 OVER I40 ON US 117 BETWEEN SR 1625 (JOHNSON LEE RD) AND SR 1504 (MURPHY RD).

TYPE OF WORK: BRIDGE PRESERVATION - LATEX MODIFIED CONCRETE OVERLAY, DECK REPAIRS, JOINT REPAIRS, SUBSTRUCTURE REPAIRS.



**DUPLIN 433**



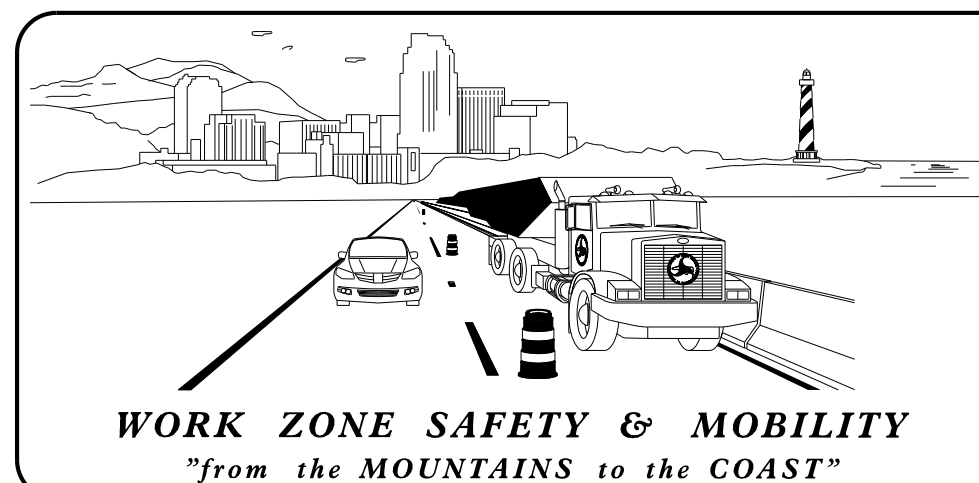
**PENDER 219**

**INDEX OF SHEETS**

SHEET NO.	TITLE
TMP-1	TITLE SHEET, VICINITY MAP, AND INDEX OF SHEETS
TMP-1A	ROADWAY STANDARD DRAWINGS & LEGEND
TMP-1B	TRANSPORTATION OPERATIONS PLAN
TMP-1C	PHASING NOTES
TMP-2A TO 2F	DETOUR FOR DUPLIN 433 BRIDGE CLOSURE
TMP-3 TO 4	DUPLIN COUNTY BRIDGE 433 TRAFFIC CONTROL (NC 903/NC 24)
TMP-5	DUPLIN COUNTY BRIDGE 433 TYPICAL SECTION (I-40 WBL)
TMP-6	DUPLIN COUNTY BRIDGE 433 TYPICAL SECTION (I-40 EBL)
TMP-7	PENDER COUNTY BRIDGE 219 TRAFFIC CONTROL STAGING (US 117)
TMP-8	PENDER COUNTY BRIDGE 219 TYPICAL SECTION (I-40 WBL)
TMP-9	PENDER COUNTY BRIDGE 219 TYPICAL SECTION (I-40 EBL)

SHEET NO.  
TMP-1

DOCUMENT NOT CONSIDERED FINAL  
UNLESS ALL SIGNATURES COMPLETED



PLANS PREPARED BY:

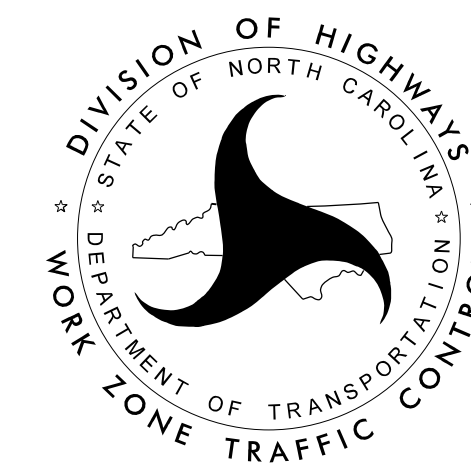
EMILY MURRAY, P.E.  
PROJECT ENGINEER

PATRICK HOLDER, P.E.  
PROJECT DESIGN ENGINEER

NCDOT CONTACTS:

SPENCER B. JENNINGS  
PROJECT ENGINEER

KENNETH C. THORNEWELL, P.E.  
PROJECT DESIGN ENGINEER



PLANS PREPARED BY:

**VOLKERT**

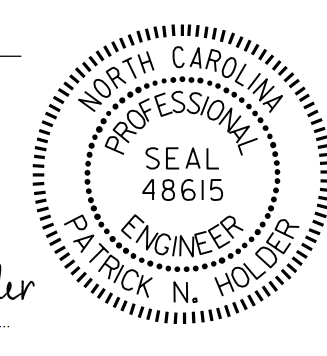
5430 Wade Park Blvd., Suite 410  
Raleigh, NC 27607  
Tel. 919-854-0344 Fax. 919-854-0355  
NC License No. F-0765

APPROVED: \_\_\_\_\_

DATE: \_\_\_\_\_

SEAL

DocuSigned by  
Patrick Holder  
31822A238FCT473...  
12/18/2020



**TIP PROJECT: 15BPR.45**