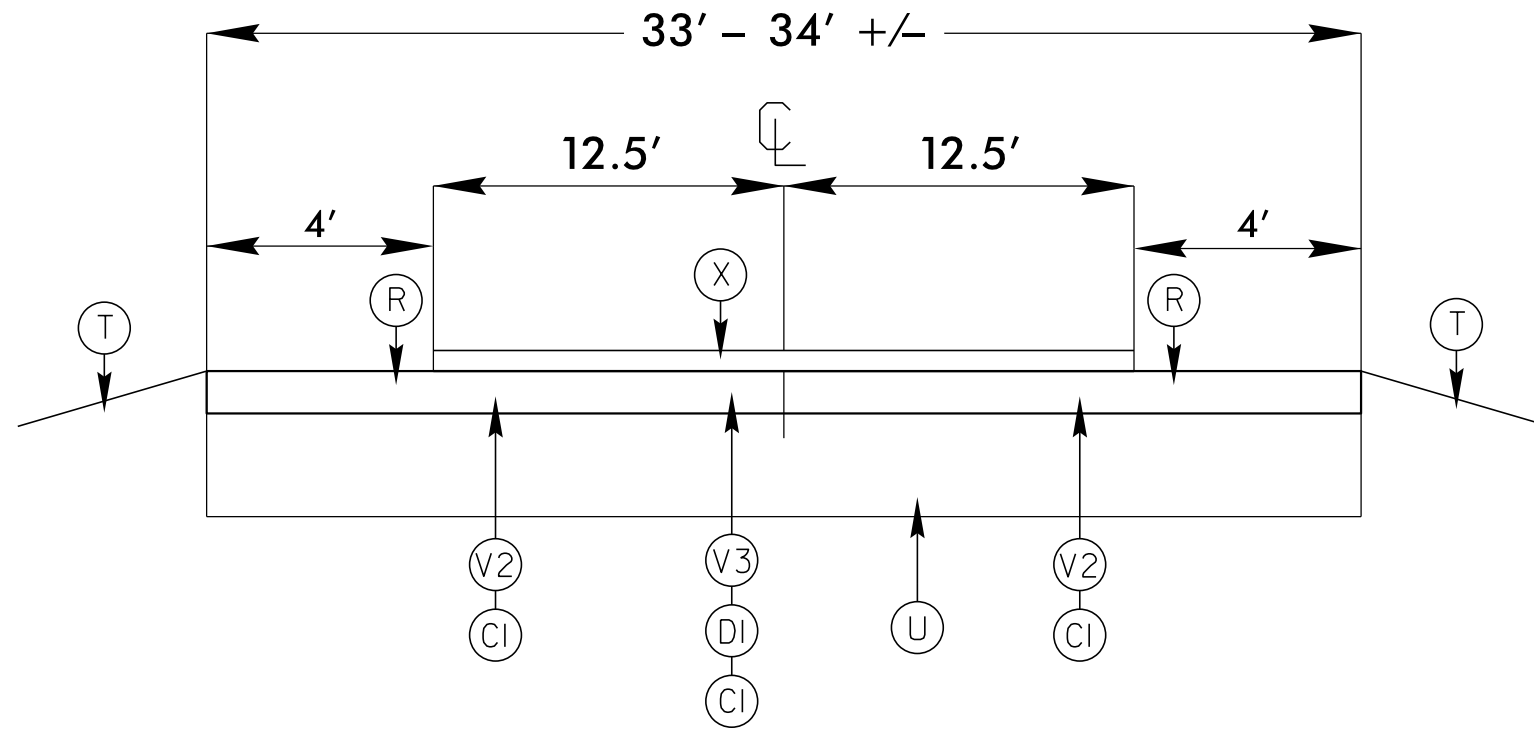
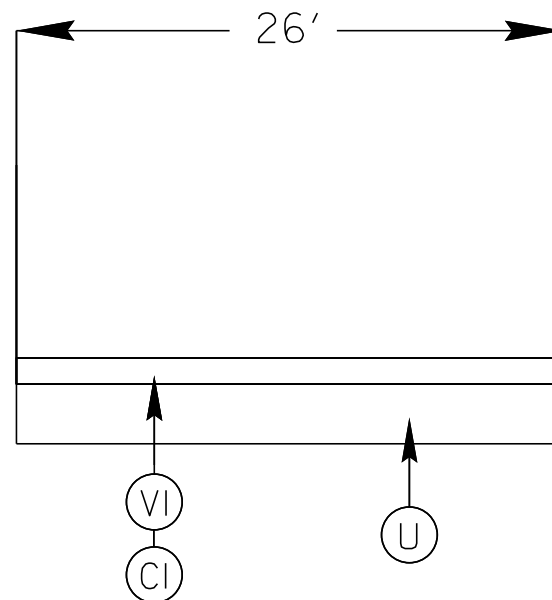


TYPICAL 1



TYPICAL 2



SURFACING SCHEDULE

ITEM NO.	DESCRIPTION
C1	PROP. APPROX. 1 1/2" ASPHALT CONCRETE SURFACE COURSE, TYPE S9.5C, AT AN AVERAGE RATE OF 168 LBS. PER SQ. YD.
D1	PROP. APPROX. 2 1/2" ASPHALT CONCRETE INTERMEDIATE COURSE, TYPE I19.0C, AT AN AVERAGE RATE OF 285 LBS. PER SQ. YD.
R	MILLED RUMBLE STRIPS
U	EXISTING ASPHALT
T	SHOULDER RECONSTRUCTION
V1	MILLED ASPHALT PAVEMENT 1 1/2" IN DEPTH.
V2	MILLED ASPHALT PAVEMENT 2" IN DEPTH IN CONTINUOUS LANE WIDTHS.
V3	MILLED ASPHALT PAVEMENT 4" IN DEPTH IN DISTRESSED AREAS AS DIRECTED BY PROJECT ENGINEER - SEE PROJECT SPECIAL PROVISIONS.
X	OPEN GRADE FRICTION COURSE TYPE FC-1 MOD AT AN AVERAGE RATE OF 90 LBS PER SQ. YD.