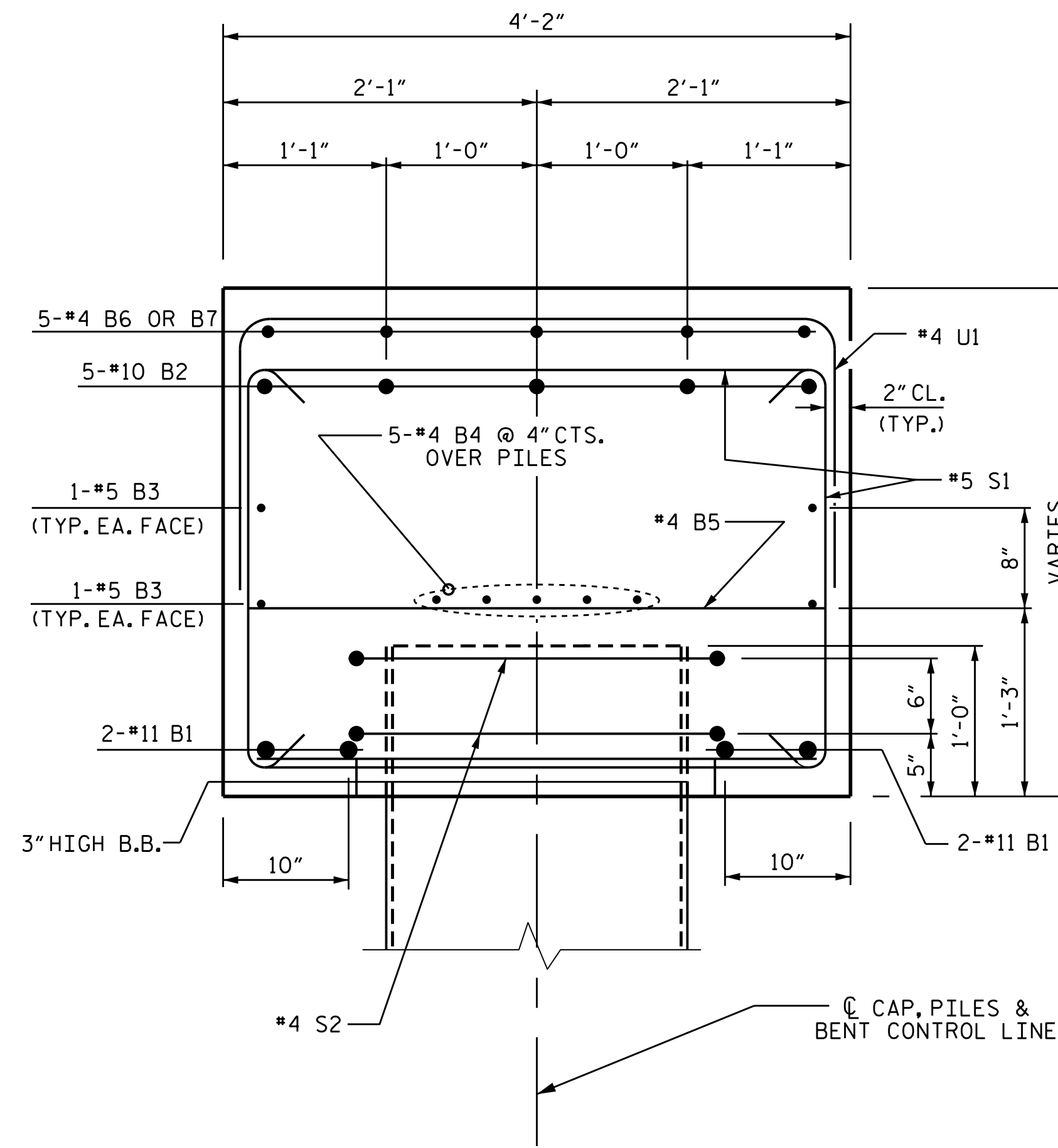
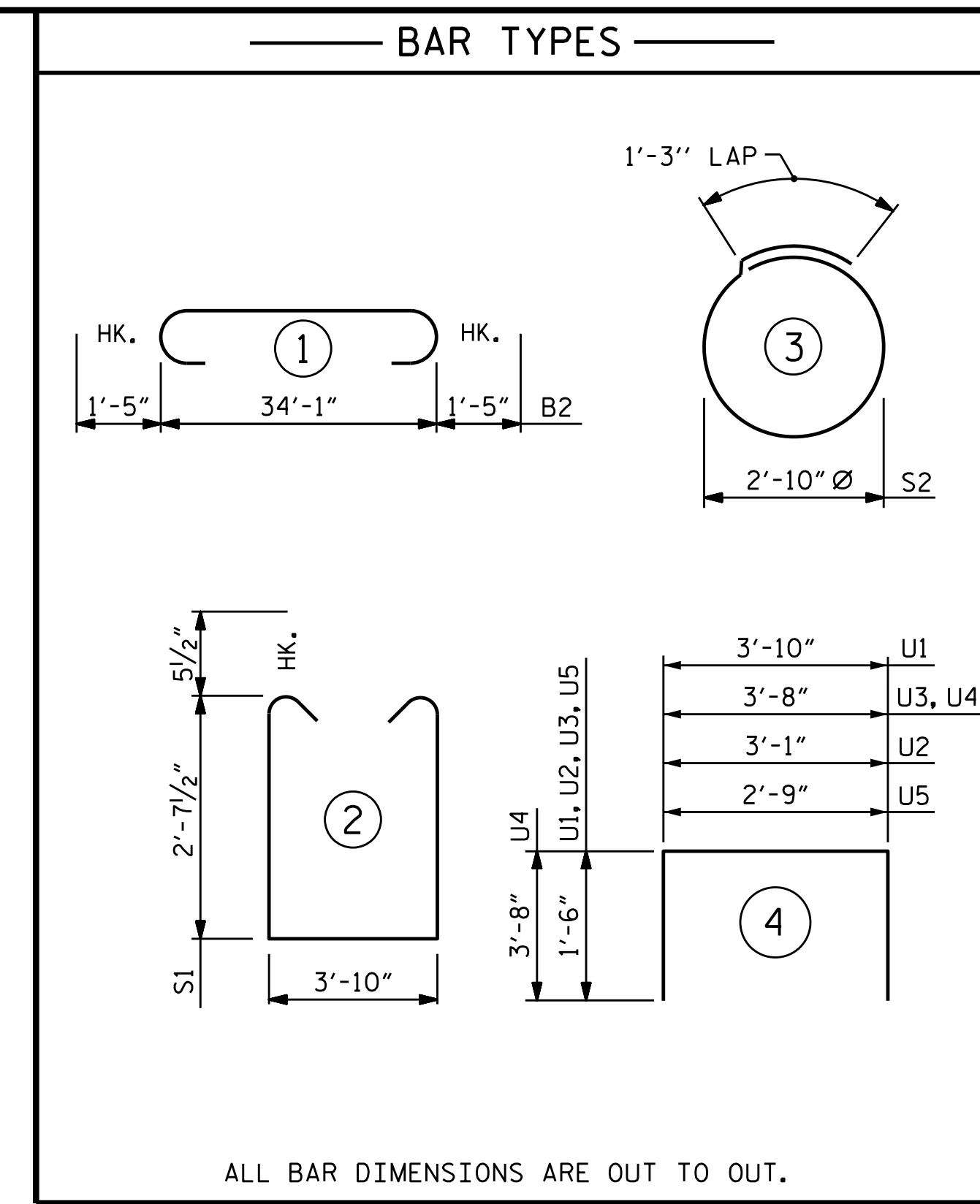


SECTION A-A

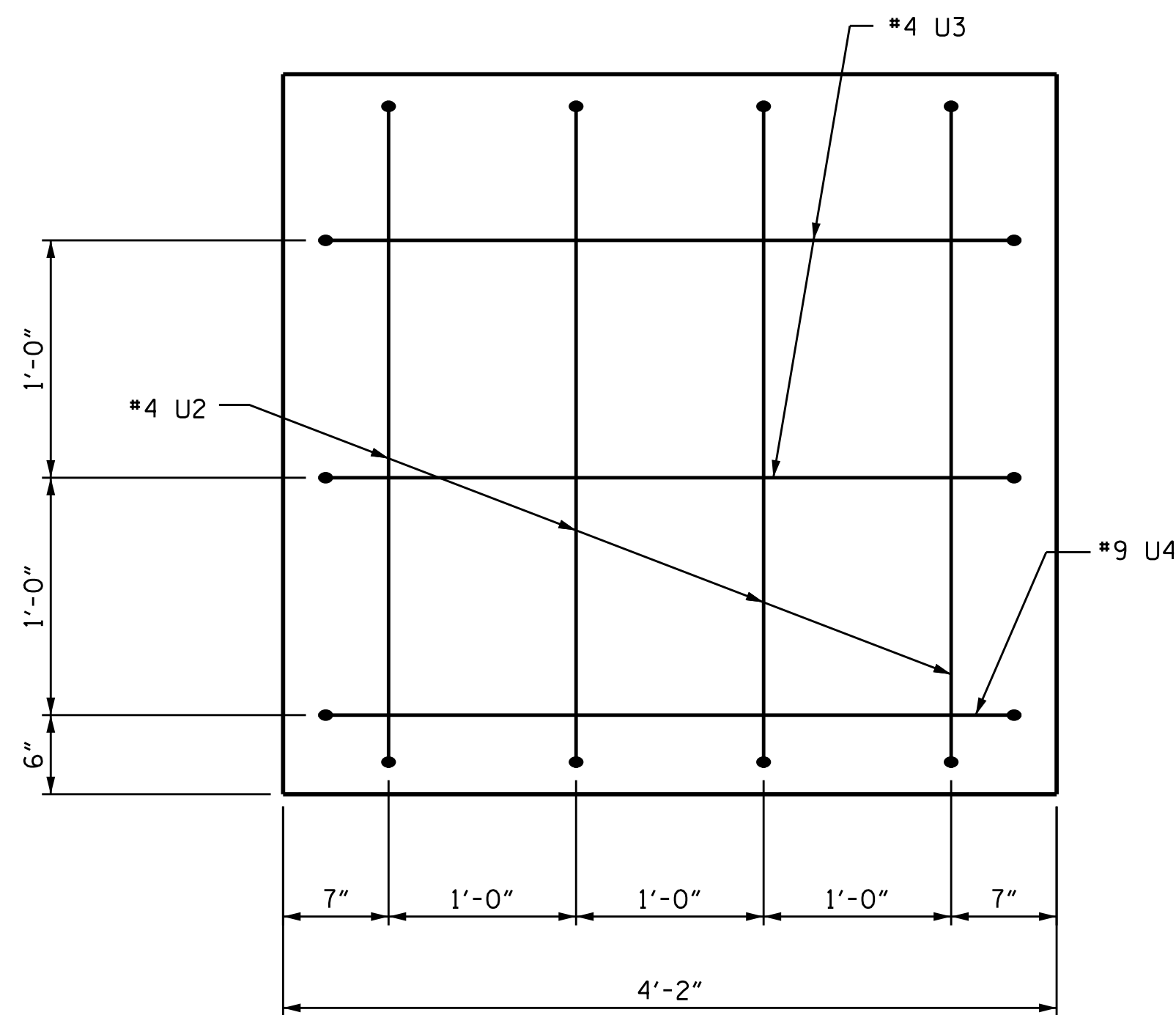


SECTION B-B

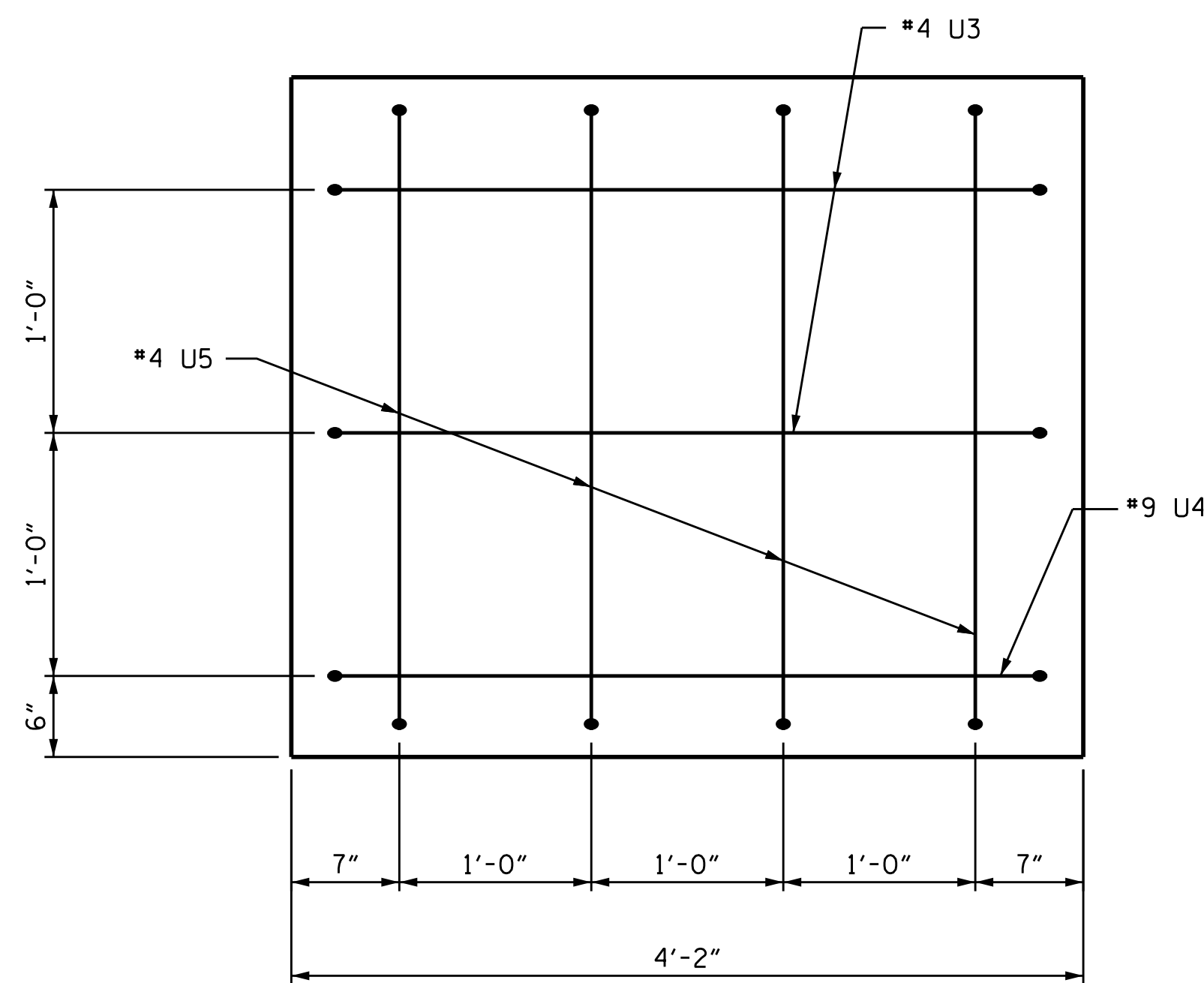


ALL BAR DIMENSIONS ARE OUT TO OUT.

BILL OF MATERIAL					
BENT 1					
BAR	NO.	SIZE	TYPE	LENGTH	WEIGHT
B1	4	#11	STR	34'-2"	726
B2	5	#10	1	36'-11"	794
B3	4	#5	STR	34'-2"	143
B4	5	#4	STR	34'-2"	114
B5	9	#4	STR	3'-10"	23
B6	15	#4	STR	5'-8"	57
B7	5	#4	STR	3'-8"	12
S1	32	#5	2	10'-0"	334
S2	12	#4	3	10'-2"	82
U1	44	#4	4	6'-10"	201
U2	4	#4	4	6'-1"	16
U3	4	#4	4	6'-8"	18
U4	2	#9	4	11'-0"	75
U5	4	#4	4	5'-9"	15
REINFORCING STEEL				2610 LBS	
CLASS A CONCRETE					
TOTAL CLASS A CONCRETE				▲17.2 C.Y.	
PP 24 x 0.50 GALVANIZED STEEL PILES					
No. 6				480 LIN. FT.	
PILE REDRIVES				EA. 3	
PIPE PILE PLATES				EA. 6	
▲ CONCRETE DISPLACED BY THE 24" STEEL PIPE PILES HAS BEEN DEDUCTED FROM THE CONCRETE QUANTITY.					



SECTION X-X



SECTION Y-Y

DRAWN BY : M.M. AHMED DATE : 02/20
 CHECKED BY : S. WANCE DATE : 04/20
 DESIGN ENGINEER OF RECORD: M.M. AHMED DATE : 11/19

22-MAY-2020 18:44
 R:\Structures\Plans\B5662.SMU.B*.410093.dgn
 oabr.ohd

DOCUMENT NOT CONSIDERED
 FINAL UNLESS ALL
 SIGNATURES COMPLETED



PROJECT NO. B-5662
 HALIFAX COUNTY
 STATION: 15+61.00 -L-

SHEET 2 OF 3

STATE OF NORTH CAROLINA
 DEPARTMENT OF TRANSPORTATION
 RALEIGH
 SUBSTRUCTURE
 BENT 1

REVISIONS						SHEET NO.
NO.	BY:	DATE:	NO.	BY:	DATE:	S-23
1			3			TOTAL SHEETS
2			4			30

STR. #1