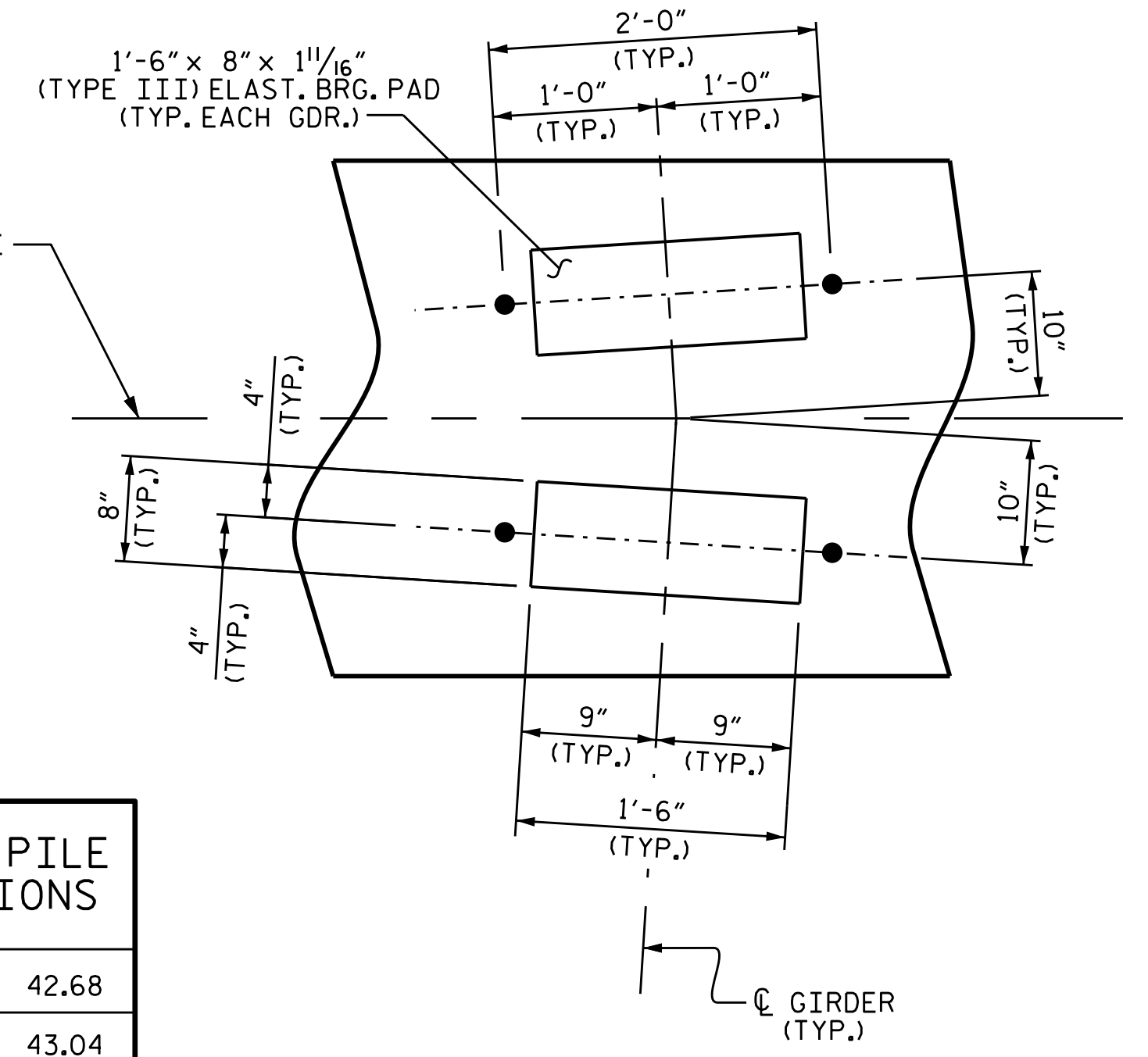


**PLAN**

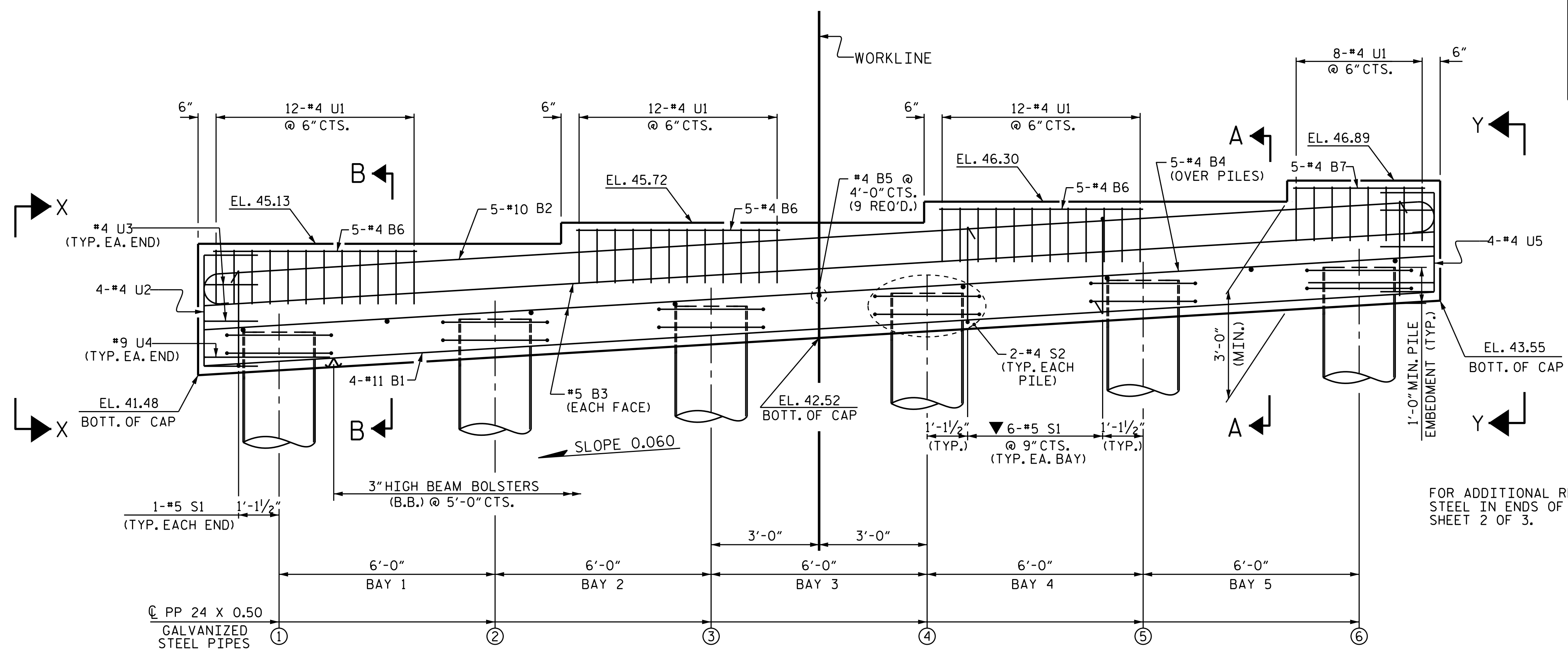
**NOTES:**

STIRRUPS IN CAP MAY BE SHIFTED AS NECESSARY TO CLEAR ANCHOR BOLTS.  
 GALVANIZE THE TOP OF EACH INTERIOR BENT PILE A MINIMUM OF 30 FEET. GALVANIZE IN ACCORDANCE WITH SECTION 1076 OF THE STANDARD SPECIFICATIONS.  
 FOR PIPE PILES, SEE "24" STEEL PIPE PILE" SHEET.



**DETAIL "A"**  
(TYP. EA. GDR.)

TOP OF PILE ELEVATIONS	
P1	42.68
P2	43.04
P3	43.40
P4	43.76
P5	44.12
P6	44.48



**ELEVATION**

FOR ADDITIONAL REINFORCING STEEL IN ENDS OF CAP, SEE SHEET 2 OF 3.

PROJECT NO. B-5662  
HALIFAX COUNTY  
 STATION: 15+61.00 -L-

SHEET 1 OF 3



STATE OF NORTH CAROLINA  
 DEPARTMENT OF TRANSPORTATION  
 RALEIGH

**SUBSTRUCTURE  
 BENT 1**

DRAWN BY: M.M. AHMED DATE: 02/20  
 CHECKED BY: S. WANCE DATE: 04/20  
 DESIGN ENGINEER OF RECORD: M.M. AHMED DATE: 11/19

▼ INVERT ALTERNATE STIRRUPS

DOCUMENT NOT CONSIDERED FINAL UNLESS ALL SIGNATURES COMPLETED

REVISIONS						SHEET NO.
NO.	BY:	DATE:	NO.	BY:	DATE:	S-22
1			3			TOTAL SHEETS
2			4			30

STR. #1