
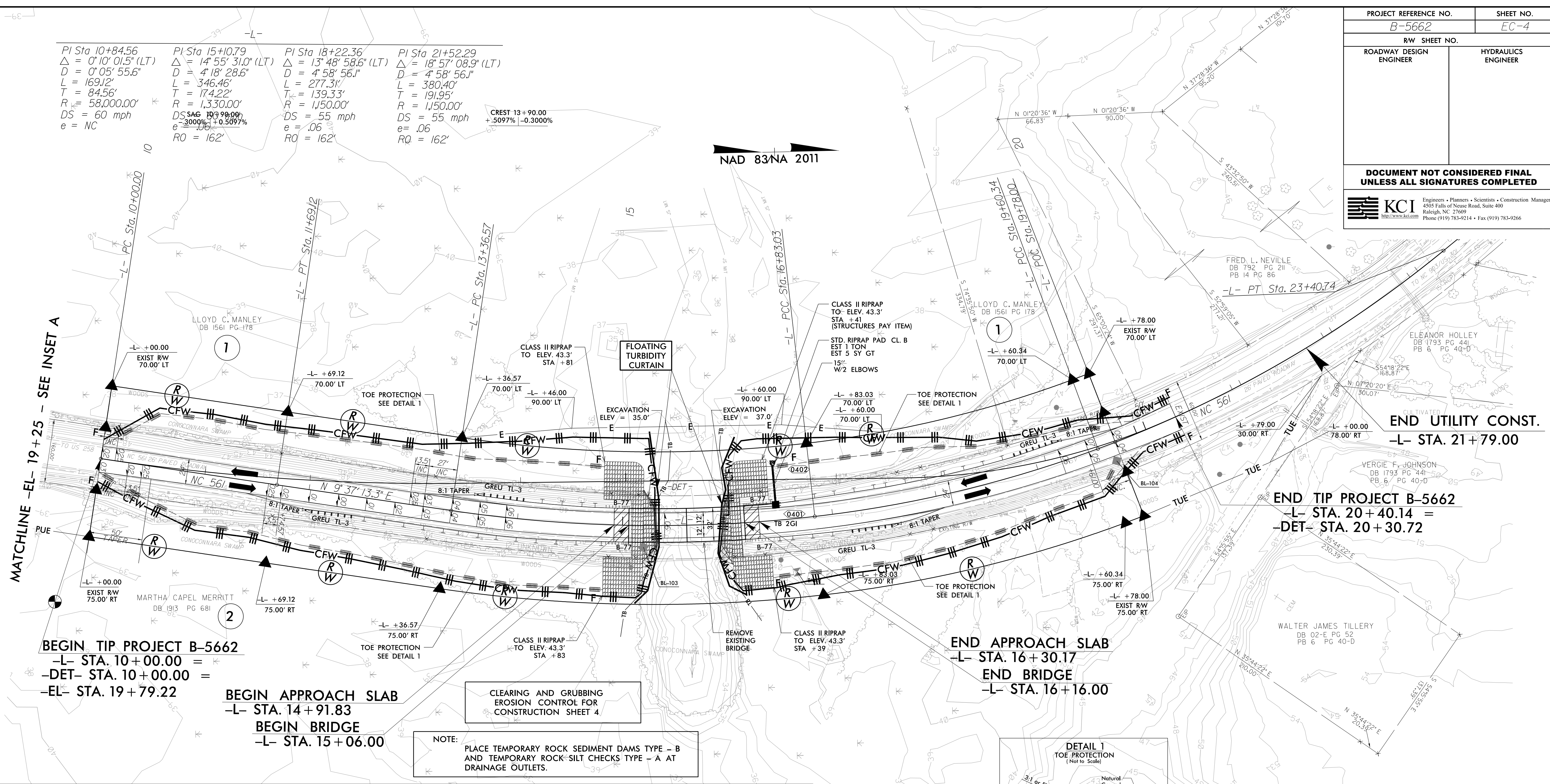


PROJECT REFERENCE NO. B-5662		SHEET NO. EC-4	
RW SHEET NO.			
ROADWAY DESIGN ENGINEER		HYDRAULICS ENGINEER	
DOCUMENT NOT CONSIDERED FINAL UNLESS ALL SIGNATURES COMPLETED			
 KCI <small>Engineers • Planners • Scientists • Construction Managers</small> <small>4505 Falls of Neuse Road, Suite 400</small> <small>Raleigh, NC 27609</small> <small>Phone (919) 783-9214 • Fax (919) 783-9266</small>			

PI Sta 10+84.56 $\Delta = 0^{\circ} 10' 01.5" (LT)$ $D = 0^{\circ} 05' 55.6"$ $L = 169.12'$ $T = 84.56'$ $R = 58,000.00'$ $DS = 60 \text{ mph}$ $e = NC$	PI Sta 15+10.79 $\Delta = 14^{\circ} 55' 31.0" (LT)$ $D = 4^{\circ} 18' 28.6"$ $L = 346.46'$ $T = 174.22'$ $R = 1,330.00'$ $DS = 60 \text{ mph}$ $e = NC$	PI Sta 18+22.36 $\Delta = 13^{\circ} 48' 58.6" (LT)$ $D = 4^{\circ} 58' 56.1"$ $L = 277.31'$ $T = 139.33'$ $R = 1,150.00'$ $DS = 55 \text{ mph}$ $e = NC$	PI Sta 21+52.29 $\Delta = 18^{\circ} 57' 08.9" (LT)$ $D = 4^{\circ} 58' 56.1"$ $L = 380.40'$ $T = 191.95'$ $R = 1,150.00'$ $DS = 55 \text{ mph}$ $e = NC$
---	--	--	--

CREST 13+90.00
+5.097% -0.3000%

NAD 83/NA 2011



BEGIN TIP PROJECT B-5662
 -L- STA. 10+00.00 =
 -DET- STA. 10+00.00 =
 -EL- STA. 19+79.22

BEGIN APPROACH SLAB
 -L- STA. 14+91.83

BEGIN BRIDGE
 -L- STA. 15+06.00

END BRIDGE
 -L- STA. 16+16.00

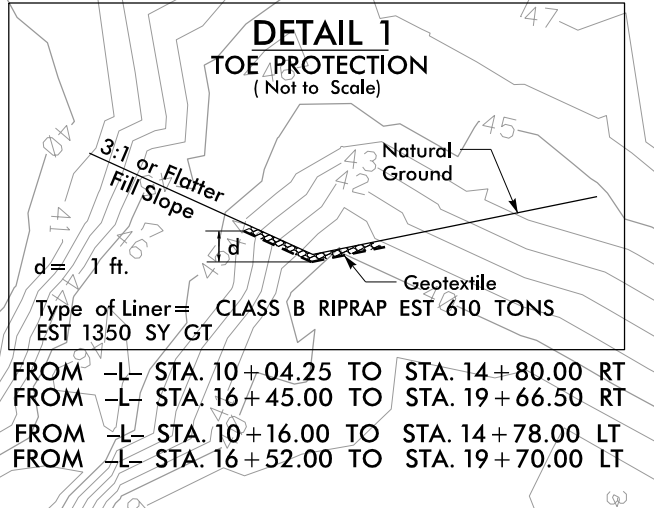
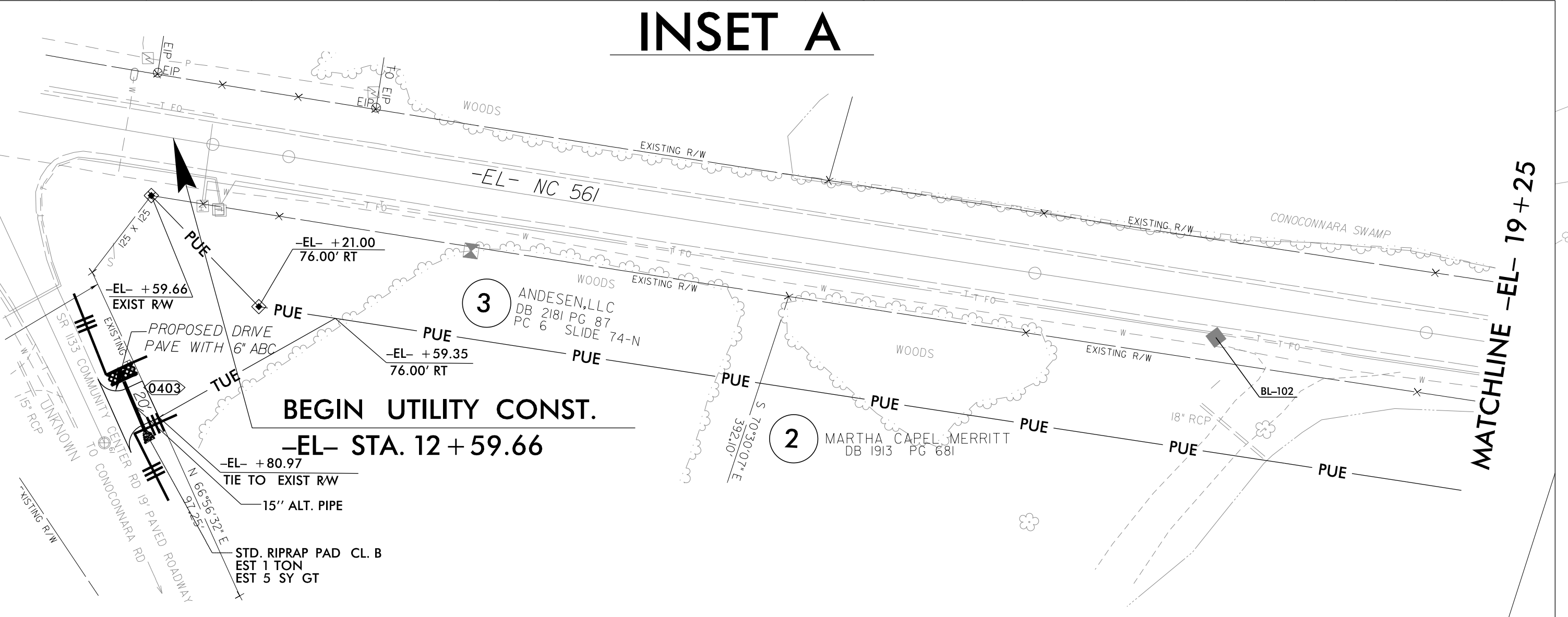
END APPROACH SLAB
 -L- STA. 16+30.17

END TIP PROJECT B-5662
 -L- STA. 20+40.14 =
 -DET- STA. 20+30.72

END UTILITY CONST.
 -L- STA. 21+79.00

NOTE:
 PLACE TEMPORARY ROCK SEDIMENT DAMS TYPE - B
 AND TEMPORARY ROCK-SILT CHECKS TYPE - A AT
 DRAINAGE OUTLETS.

INSET A



FROM -L- STA. 10+04.25 TO STA. 14+80.00 RT
 FROM -L- STA. 16+45.00 TO STA. 19+66.50 RT
 FROM -L- STA. 10+16.00 TO STA. 14+78.00 LT
 FROM -L- STA. 16+52.00 TO STA. 19+70.00 LT

 BRIDGE APPROACH SLAB
 STRUCTURE EXCAVATION

FOR -L- PROFILE SEE SHEET 5
 FOR -DET- SEE SHEET 4A
 FOR STRUCTURE PLANS, SEE SHEETS S-1 THRU S-7

8/17/99
 5/4/2020
 Elizabeth Sheldon