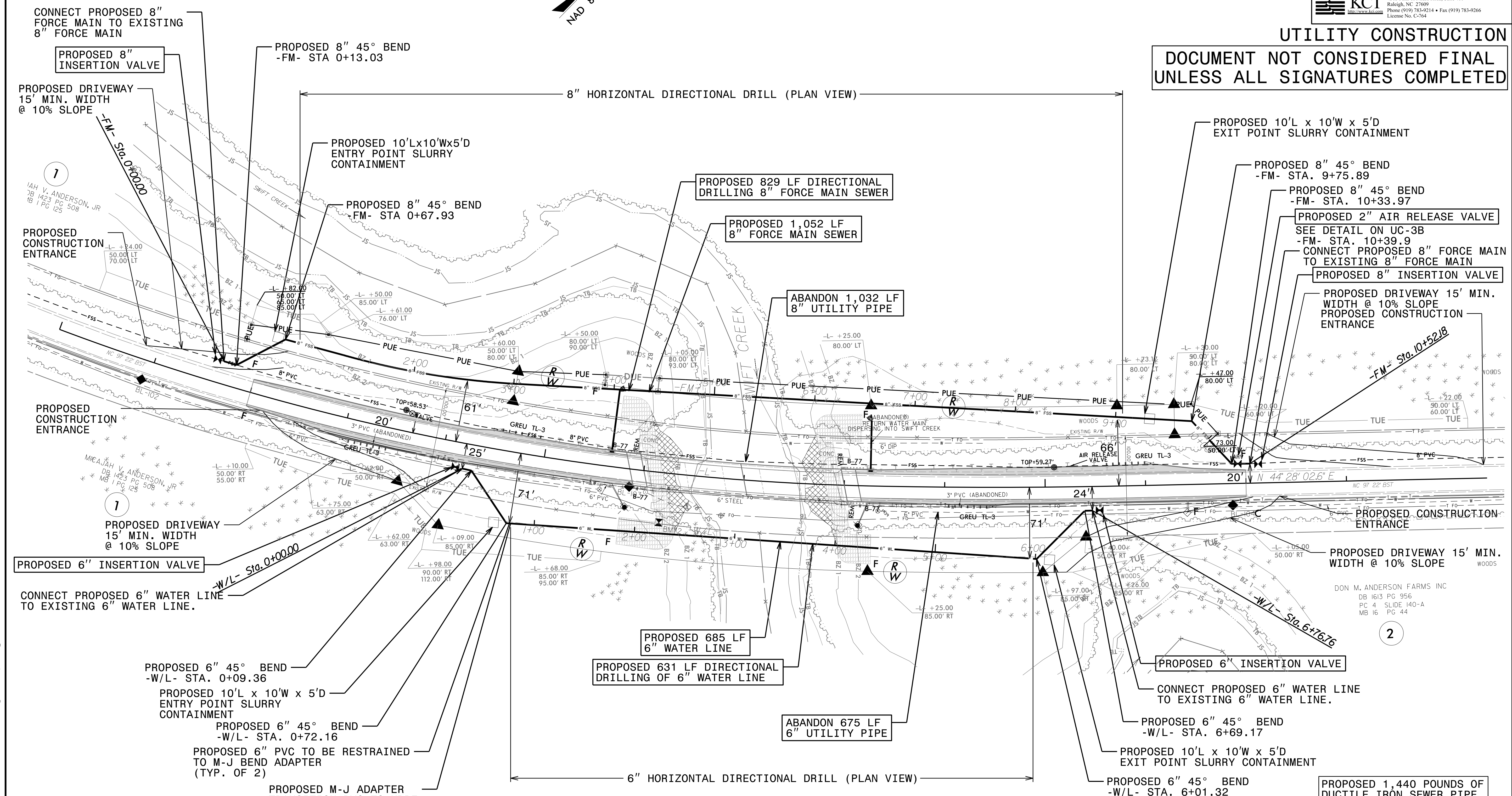


PROJECT REFERENCE NO.	SHEET NO.
B-5671	UC-4
DESIGNED BY: DK	
DRAWN BY: AP	
CHECKED BY: MM	
APPROVED BY:	
REVISED:	
NORTH CAROLINA DEPARTMENT OF TRANSPORTATION UTILITIES ENGINEERING SEC. PHONE: (919) 707-6690 FAX: (919) 250-4151 UTILITY CONSTRUCTION PLANS ONLY	
Engineers • Planners • Scientists • Construction Managers 4409 Falls of Neuse Road, Suite 400 Raleigh, NC 27609 Phone (919) 783-9214 • Fax (919) 783-9266 License No. C-764	

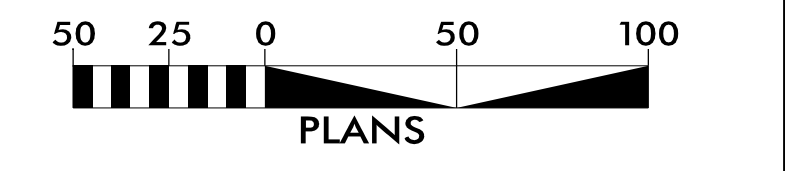
UTILITY CONSTRUCTION

DOCUMENT NOT CONSIDERED FINAL  
UNLESS ALL SIGNATURES COMPLETED



NOTES:

1. APPROXIMATE COORDINATES OF WATER LINE ENTRY POINT ARE N814542.06, E2415826.96.
2. APPROXIMATE COORDINATES OF WATER LINE EXIT POINT ARE N814880.14, E2416223.65.
3. APPROXIMATE COORDINATES OF FORCE MAIN ENTRY POINT ARE N814547.06, E2415575.30.
4. APPROXIMATE COORDINATES OF FORCE MAIN EXIT POINT ARE N815066.19, E2416212.78.



5/14/20  
 I:\MAR-2020\1751\lastewater\B5671\ut\_sew\_rdy\_UC04\_psh.dgn  
 194P.24 B.M.S.