

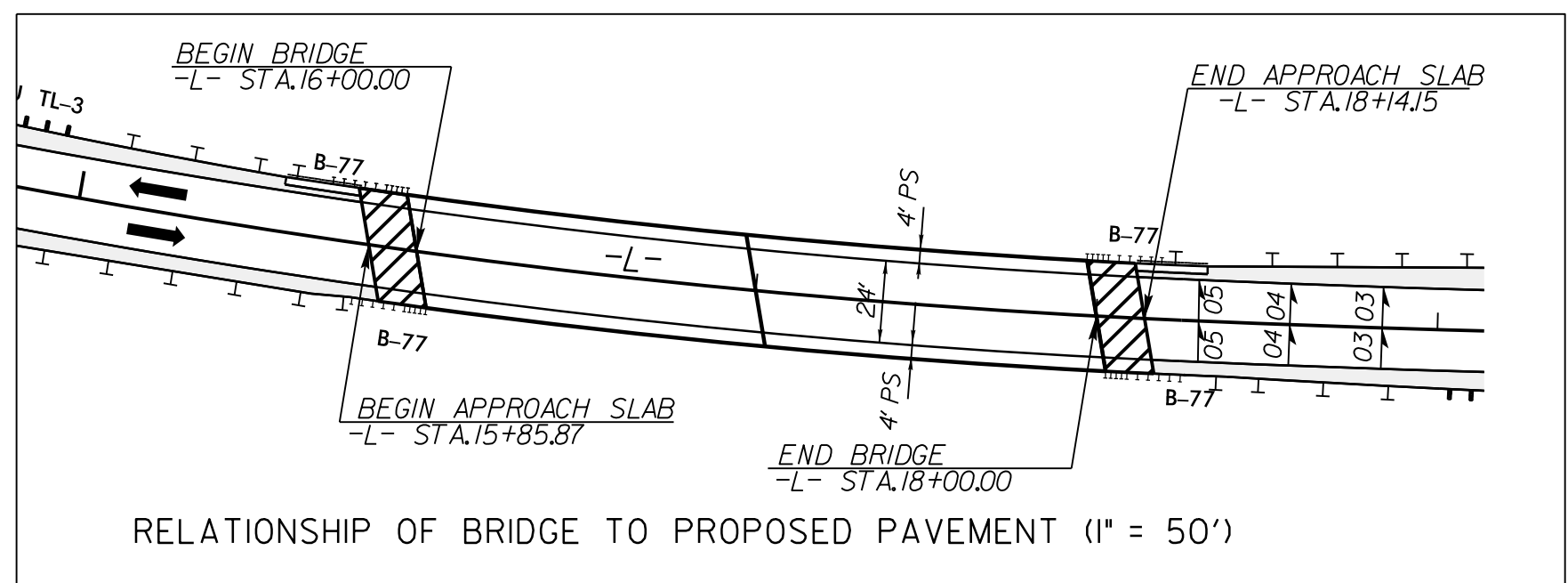
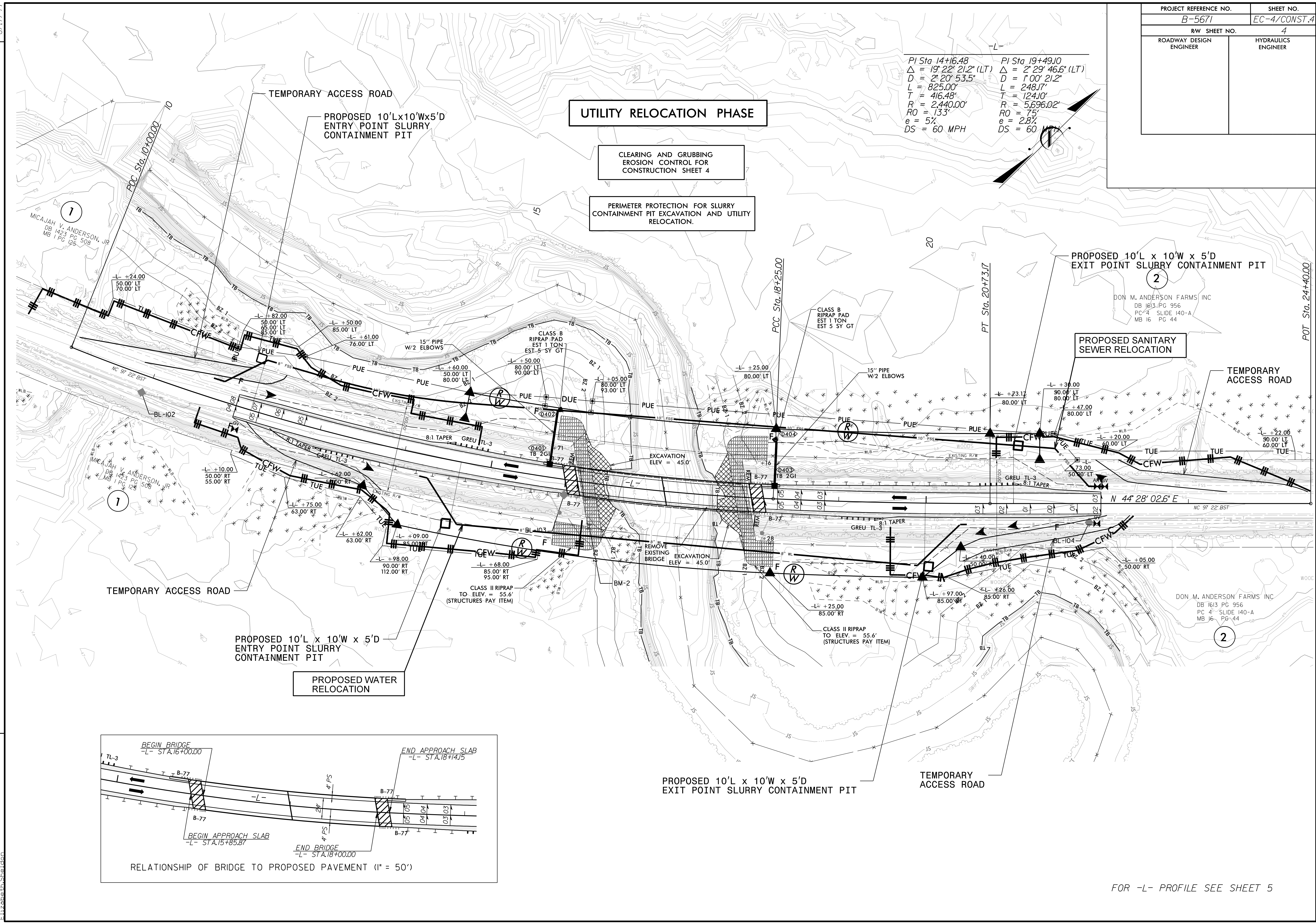
PROJECT REFERENCE NO.	SHEET NO.
B-5671	EC-4/CONST.4
RW SHEET NO.	4
ROADWAY DESIGN ENGINEER	HYDRAULICS ENGINEER

PI Sta 14+16.48 PI Sta 19+49.10
 $\Delta = 19' 22" 21.2" (LT)$ $\Delta = 2' 29' 46.6" (LT)$
 $D = 2' 20' 53.5"$ $D = 1' 00' 21.2"$
 $L = 825.00'$ $L = 248.17'$
 $T = 416.48'$ $T = 124.10'$
 $R = 2,440.00'$ $R = 5,696.02'$
 $RO = 133'$ $RO = 75'$
 $e = 5\%$ $e = 2.8\%$
 $DS = 60 MPH$ $DS = 60$

UTILITY RELOCATION PHASE

CLEARING AND GRUBBING
EROSION CONTROL FOR
CONSTRUCTION SHEET 4

PERIMETER PROTECTION FOR SLURRY
CONTAINMENT PIT EXCAVATION AND UTILITY
RELOCATION.



RELATIONSHIP OF BRIDGE TO PROPOSED PAVEMENT (1" = 50')

PROPOSED 10'L x 10'W x 5'D
EXIT POINT SLURRY CONTAINMENT PIT

PROPOSED 10'L x 10'W x 5'D
EXIT POINT SLURRY CONTAINMENT PIT

PROPOSED SANITARY
SEWER RELOCATION

2

FOR -L- PROFILE SEE SHEET 5

REVISIONS

8/17/99
 2/4/2020
 5/18/1945.24 B-5671\Roadside\CADD\PSH\B-5671_reu_EC04.dgn
 Elizabeth Sheldon