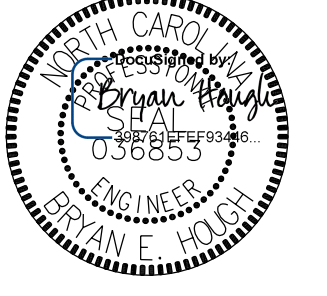
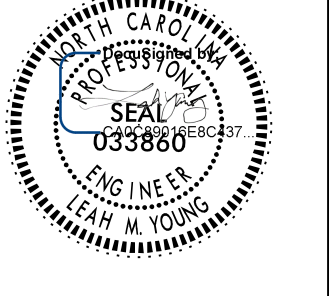
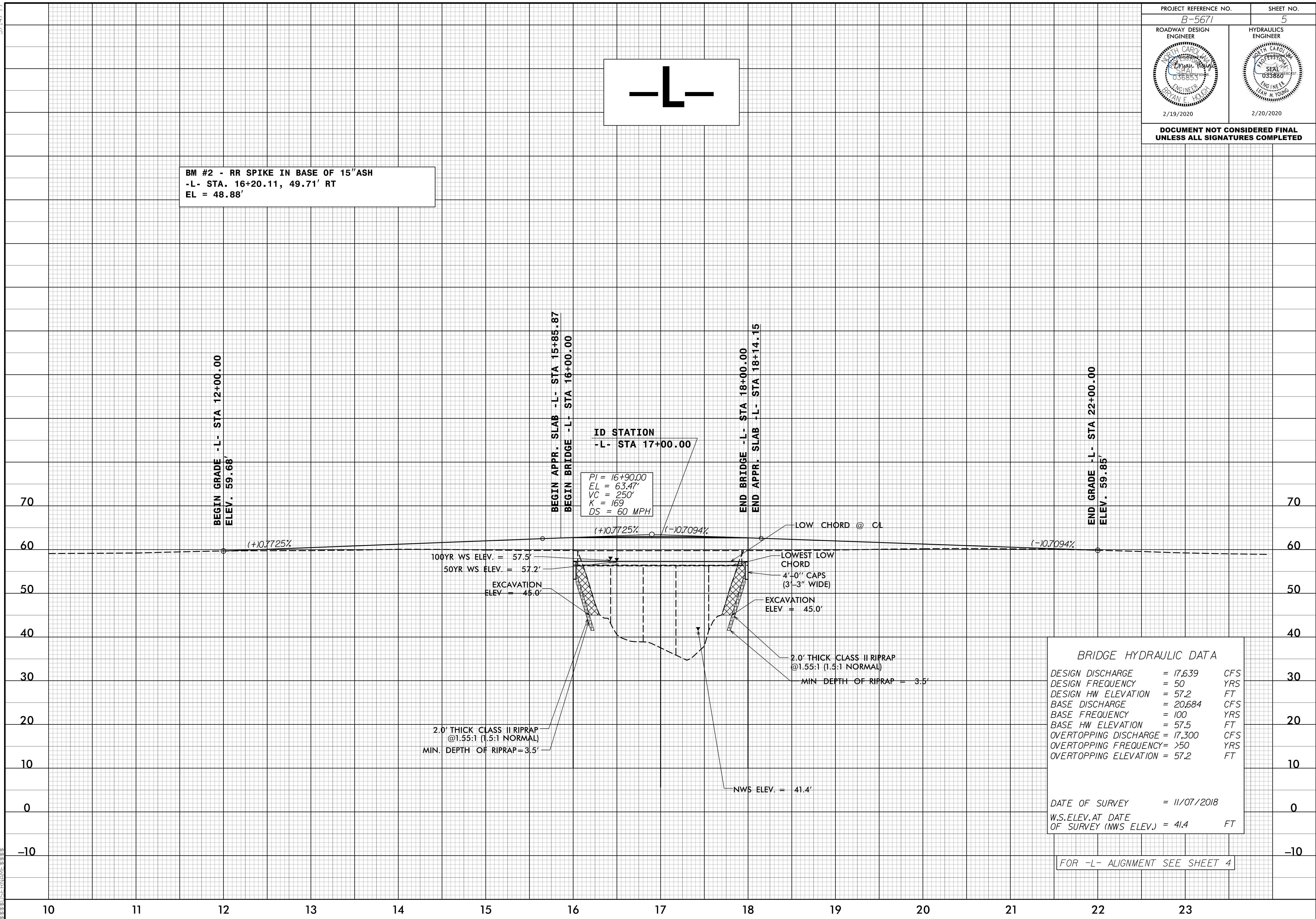
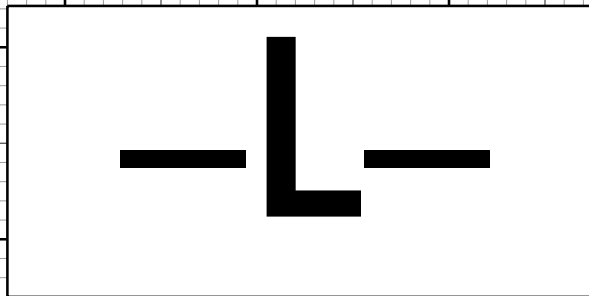


5/14/99

PROJECT REFERENCE NO. <i>B-5671</i>	SHEET NO. <i>5</i>
ROADWAY DESIGN ENGINEER 	HYDRAULICS ENGINEER 
2/19/2020	2/20/2020

**DOCUMENT NOT CONSIDERED FINAL
UNLESS ALL SIGNATURES COMPLETED**

BM #2 - RR SPIKE IN BASE OF 15" ASH
-L- STA. 16+20.11, 49.71' RT
EL = 48.88'



BRIDGE HYDRAULIC DATA

DESIGN DISCHARGE	= 17,639	CFS
DESIGN FREQUENCY	= 50	YRS
DESIGN HW ELEVATION	= 57.2	FT
BASE DISCHARGE	= 20,684	CFS
BASE FREQUENCY	= 100	YRS
BASE HW ELEVATION	= 57.5	FT
OVERTOPPING DISCHARGE	= 17,300	CFS
OVERTOPPING FREQUENCY	= >50	YRS
OVERTOPPING ELEVATION	= 57.2	FT

DATE OF SURVEY = 11/07/2018
W.S.ELEV. AT DATE OF SURVEY (NWS ELEV.) = 41.4 FT

FOR -L- ALIGNMENT SEE SHEET 4

19 FEB 2020 10:37 AM
M:\2018\180324\Fig.24 - B-5671\Roadway\Proj\B-5671-Rdy-pl.dgn
BRIAN E. HOYLE