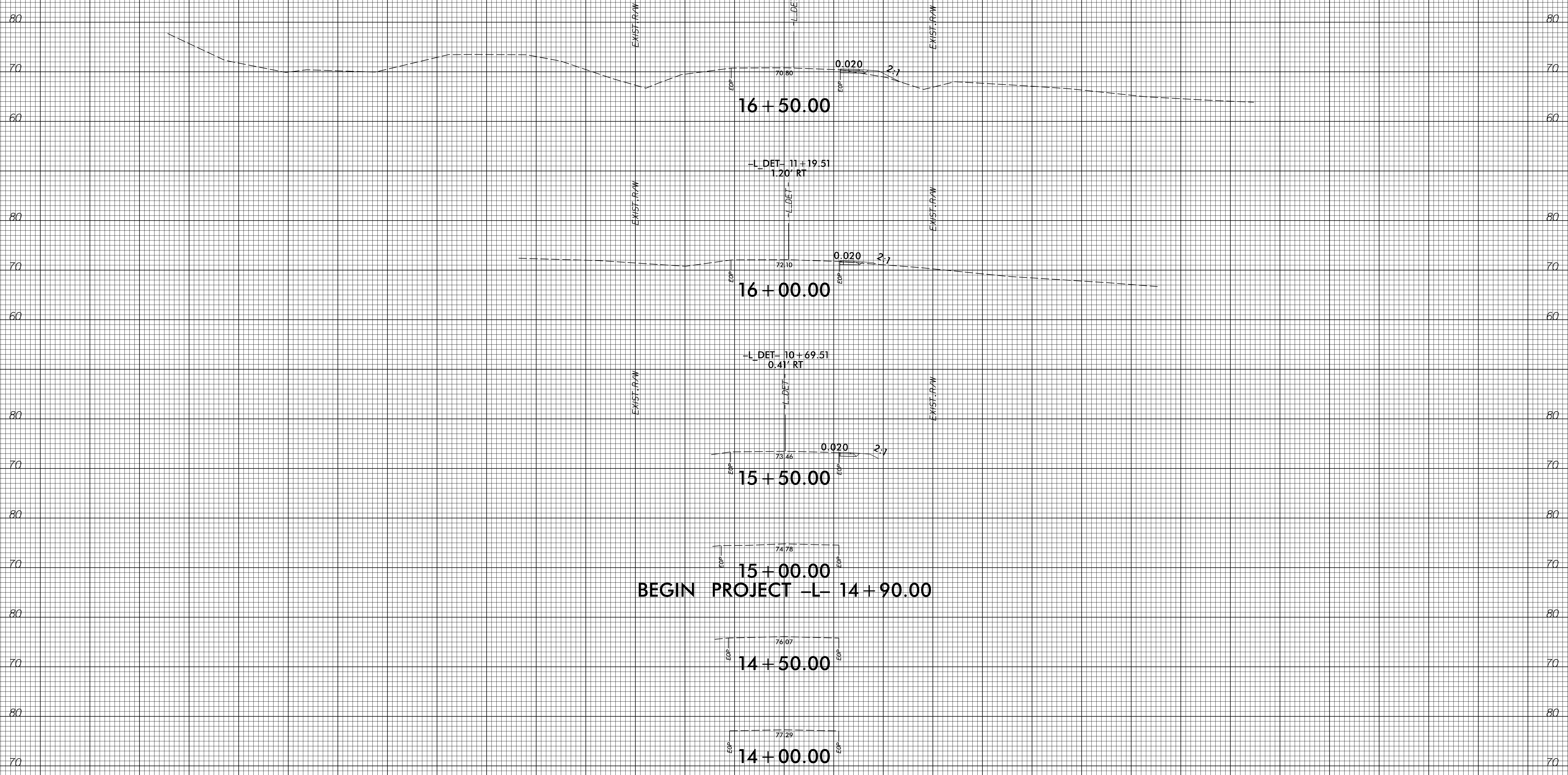
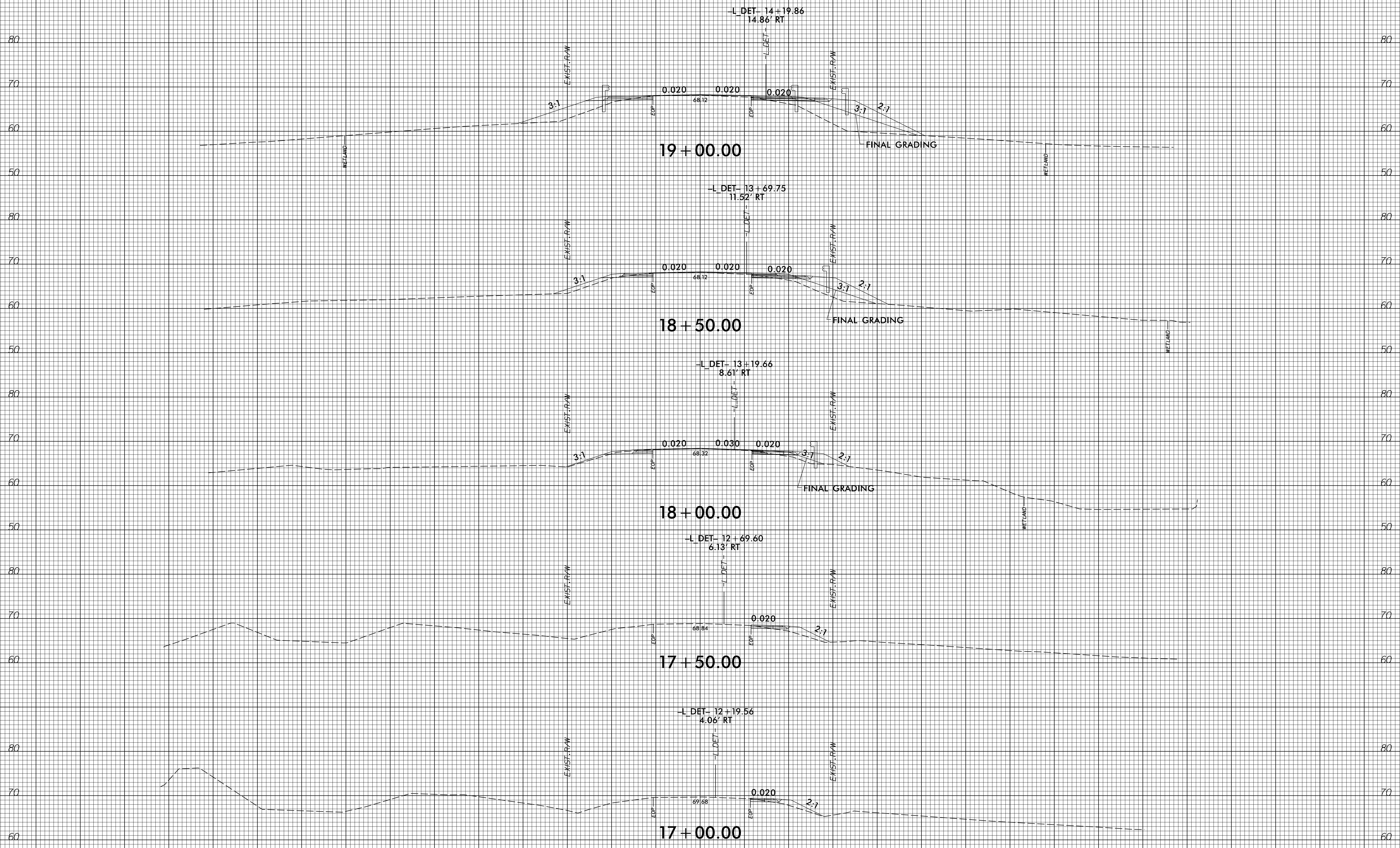


150 140 130 120 110 100 90 80 70 60 50 40 30 20 10 0 10 20 30 40 50 60 70 80 90 100 110 120 130 140 150

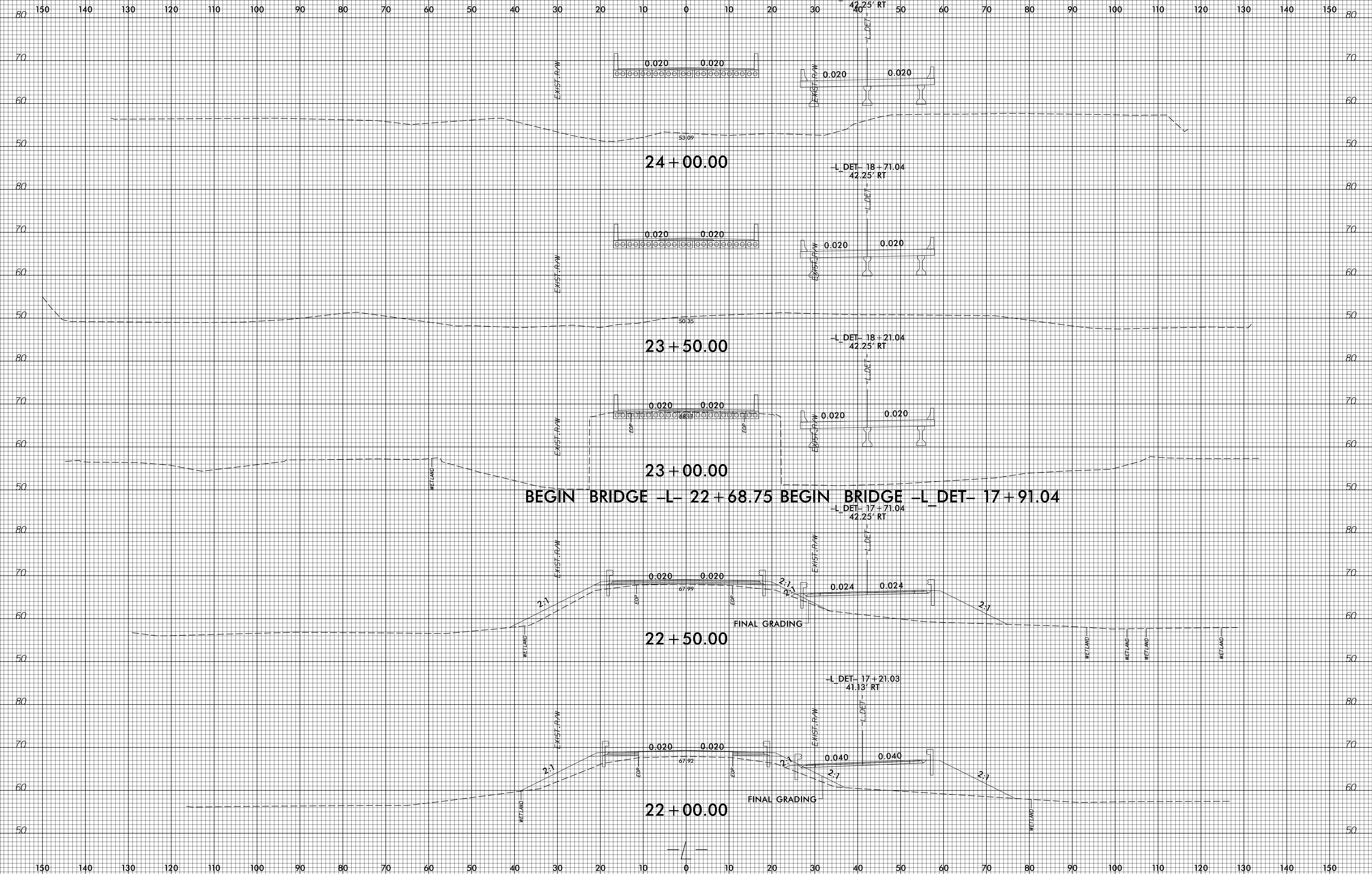


150 140 130 120 110 100 90 80 70 60 50 40 30 20 10 0 10 20 30 40 50 60 70 80 90 100 110 120 130 140 150

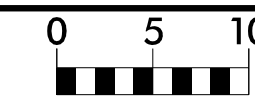
150 140 130 120 110 100 90 80 70 60 50 40 30 20 10 0 10 20 30 40 50 60 70 80 90 100 110 120 130 140 150



150 140 130 120 110 100 90 80 70 60 50 40 30 20 10 0 10 20 30 40 50 60 70 80 90 100 110 120 130 140 150



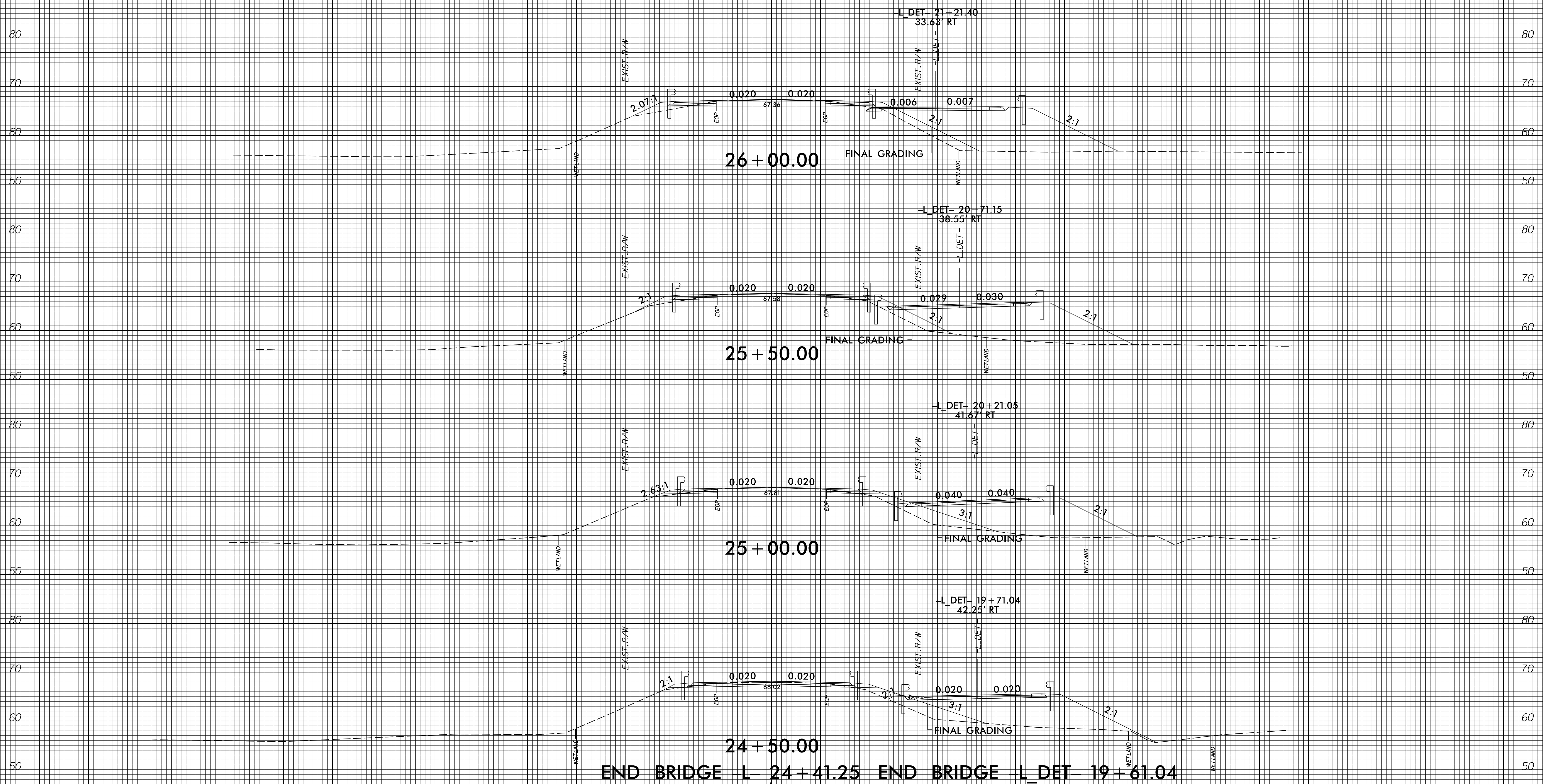
6/23/16



PROJ. REFERENCE NO.
B-5639

SHEET NO.
X-5

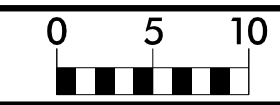
150 140 130 120 110 100 90 80 70 60 50 40 30 20 10 0 10 20 30 40 50 60 70 80 90 100 110 120 130 140 150



150 140 130 120 110 100 90 80 70 60 50 40 30 20 10 0 10 20 30 40 50 60 70 80 90 100 110 120 130 140 150

I:\6143419
R11\6143419\CorridorModeling\B-5639_rdy_XPL_L&L_DET.dgn

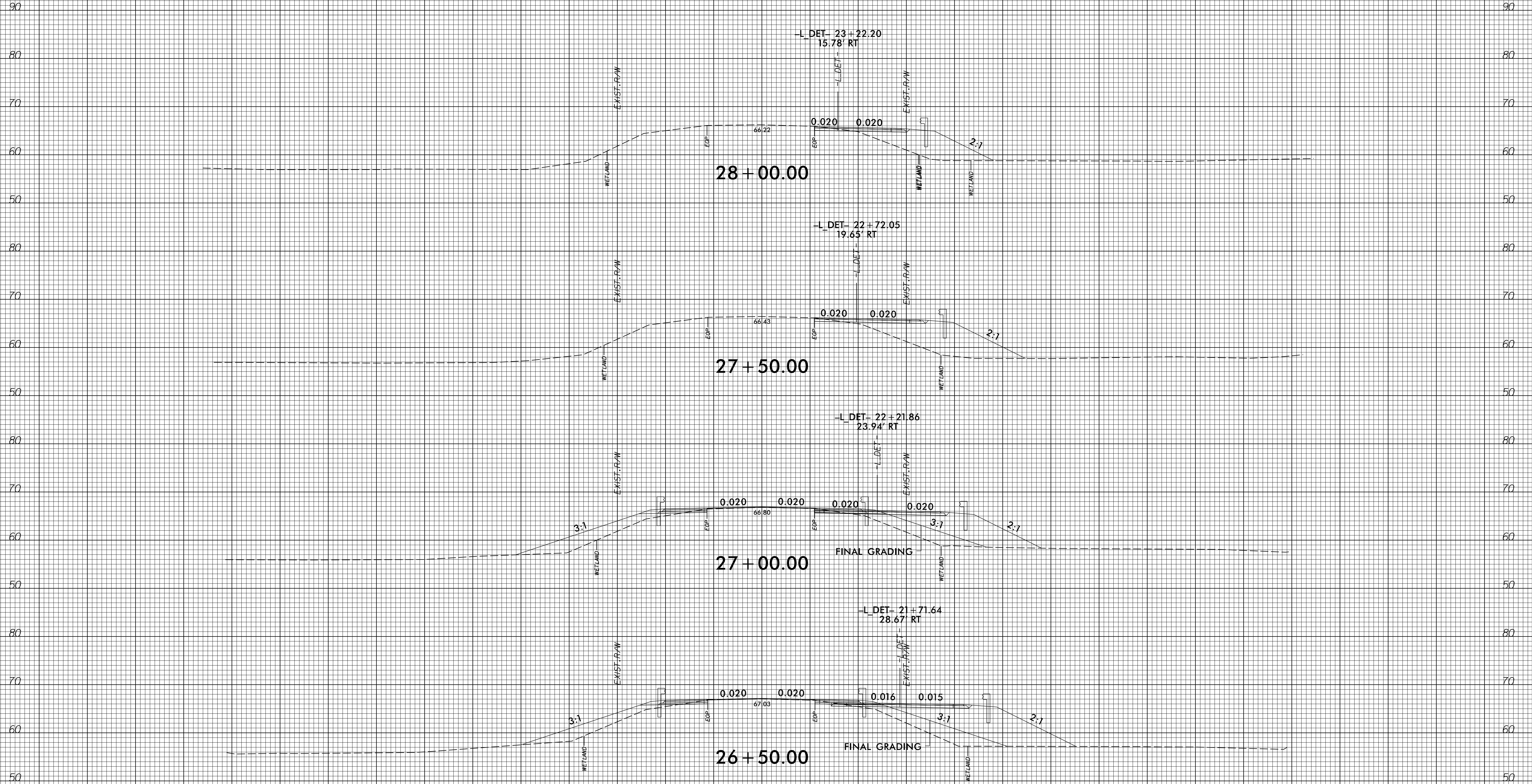
6/23/16



PROJ. REFERENCE NO.
B-5639

SHEET NO.
X-6

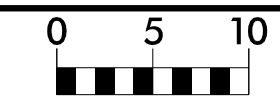
150 140 130 120 110 100 90 80 70 60 50 40 30 20 10 0 10 20 30 40 50 60 70 80 90 100 110 120 130 140 150



150 140 130 120 110 100 90 80 70 60 50 40 30 20 10 0 10 20 30 40 50 60 70 80 90 100 110 120 130 140 150

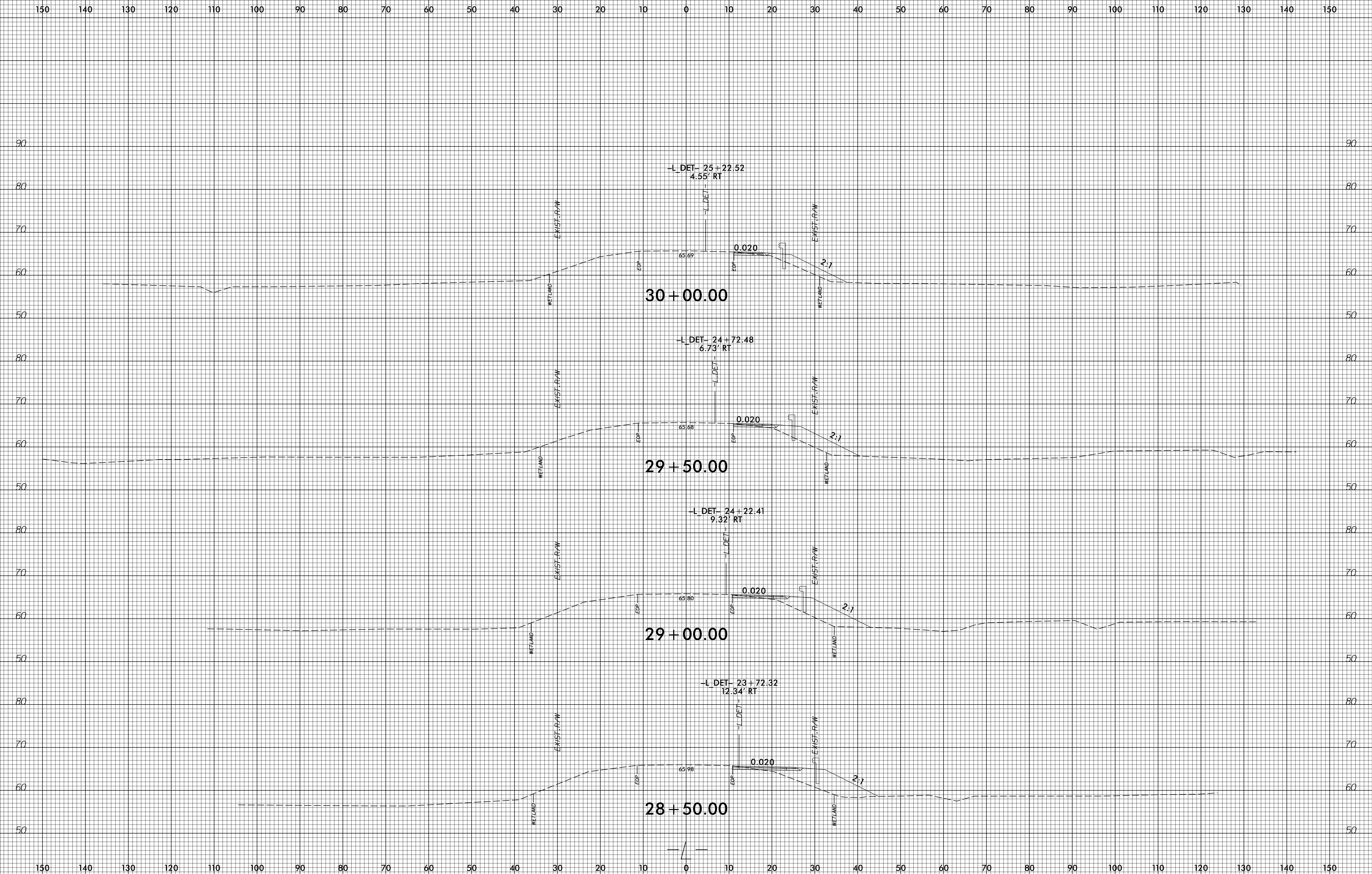
I:\615219
11:58:25am\Corridor-Modeling\B-5639_rdy_XPL_L&L_DET.dgn

6/23/16



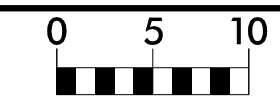
PROJ. REFERENCE NO.
B-5639

SHEET NO.
X-7



I:\615120
 11:18:29\Corridor-Modeling\B-5639_rdy_XPL_L&L_DET.dgn

6/23/16



PROJ. REFERENCE NO.
B-5639

SHEET NO.
X-8

150 140 130 120 110 100 90 80 70 60 50 40 30 20 10 0 10 20 30 40 50 60 70 80 90 100 110 120 130 140 150

END PROJECT -L- 32 + 25.00

-L_DET- 26 + 22.57
1.48' RT

EXIST-R/W
WETLAND

EXIST-R/W
WETLAND

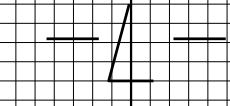
31 + 00.00

-L_DET- 25 + 72.55
2.80' RT

EXIST-R/W
WETLAND

EXIST-R/W
WETLAND

30 + 50.00



150 140 130 120 110 100 90 80 70 60 50 40 30 20 10 0 10 20 30 40 50 60 70 80 90 100 110 120 130 140 150

I:\615120
11:18:29\pdy\Corridor-Modeling\B-5639_rdy_XPL_L&L_DET.dgn