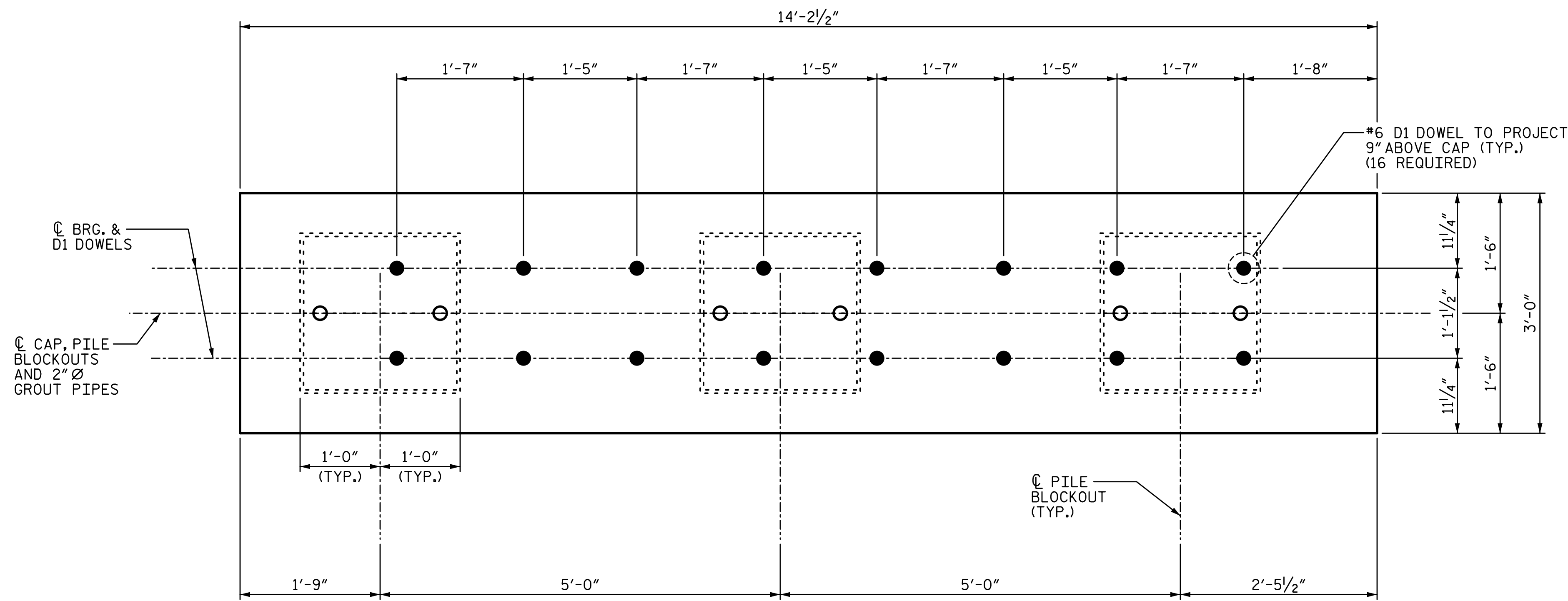
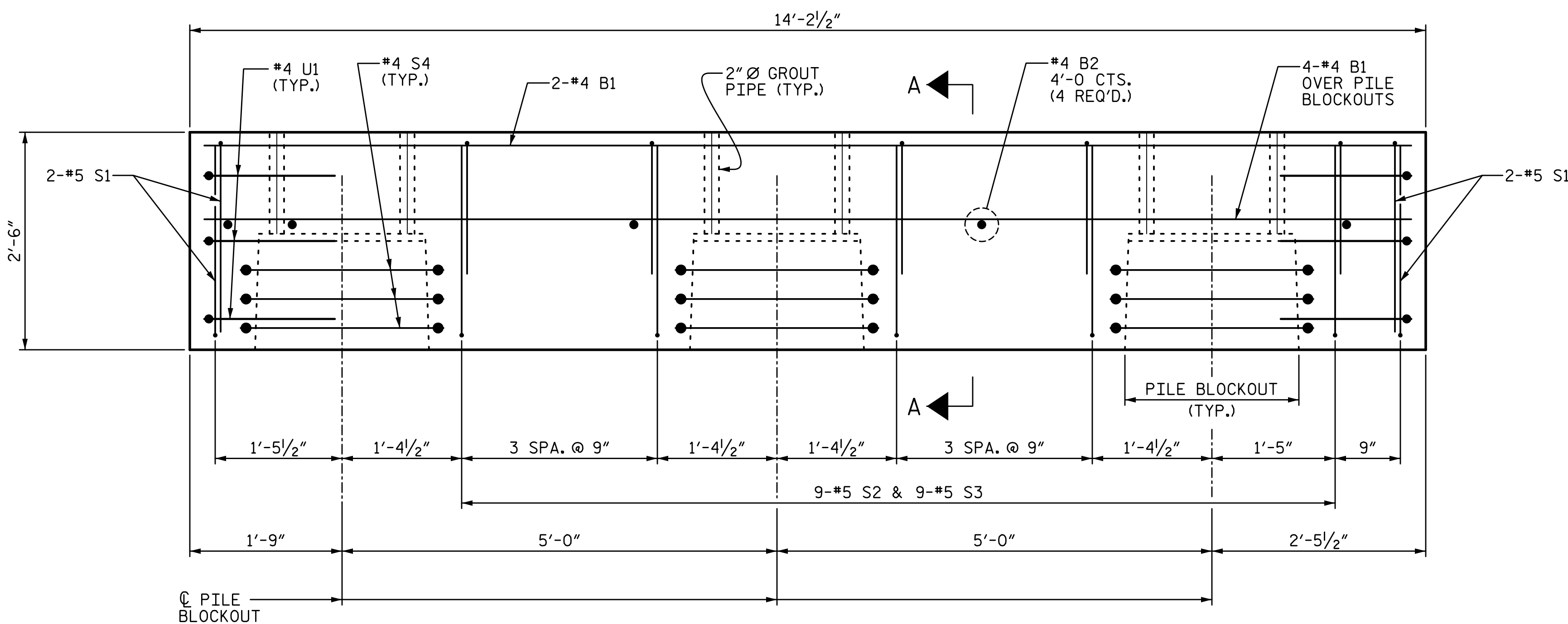


4/7/2020 4:10:51 PM G:\Projects\2018\Division 3 (SEA)\B-5639 (Duplin 36 NC11 over MaxwellCreek)\Structures\Drawings\Final\B5639\_SMU\_B\_300036.dgn



**PLAN**

(FOR PILE BLOCKOUT DETAILS, SEE SHEET 5 OF 6)



**ELEVATION**

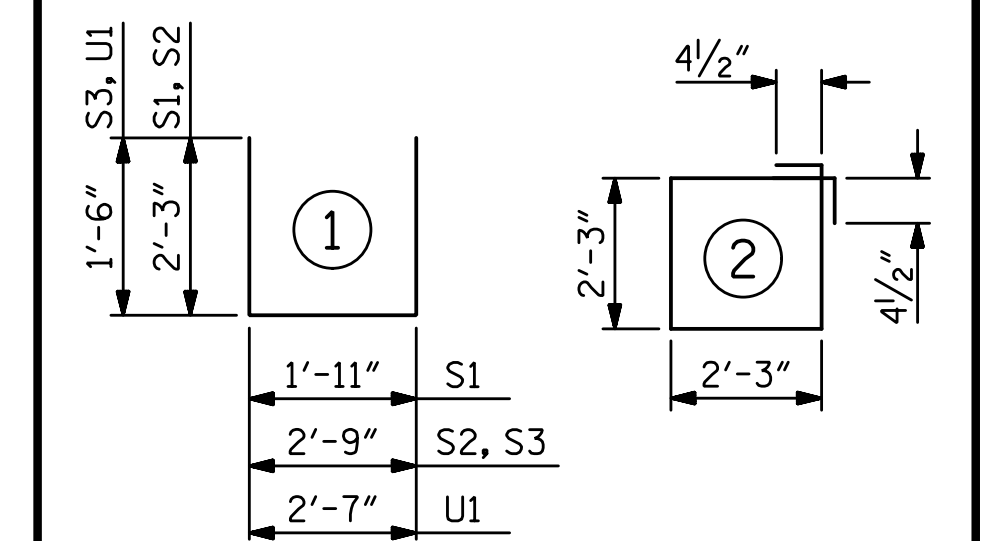
(\*6 D1 DOWELS NOT SHOWN FOR CLARITY)  
FOR SECTION A-A, SEE SHEET 5 OF 6.

**BILL OF MATERIAL  
FOR ONE PIECE B-01**

BAR	NO.	SIZE	TYPE	LENGTH	WEIGHT
B1	6	#4	STR	13'-10"	55
B2	4	#4	STR	2'-8"	7
D1	16	#6	STR	1'-6"	36
S1	8	#5	1	6'-5"	54
S2	9	#5	1	7'-3"	68
S3	9	#5	1	5'-9"	54
S4	9	#4	2	9'-9"	59
U1	6	#4	1	5'-7"	22

REINFORCING STEEL	355 LBS
4000 PSI PRESTRESS CONCRETE	3.4 C.Y.
PILE BLOCKOUT GROUT ▲	0.6 C.Y.
0.6" Ø L.R. STRANDS	No. 12

**BAR TYPES**



ALL BAR DIMENSIONS ARE OUT TO OUT.

▲ GROUT TO FILL TOP 1'-0" OF THE PP 18 X 0.50 GALVANIZED STEEL PILE HAS BEEN INCLUDED IN THE GROUT QUANTITY.

GRADE 270 STRANDS	
AREA ( SQUARE INCHES )	0.217
ULTIMATE STRENGTH ( LBS. PER STRAND )	58,600
APPLIED PRESTRESS ( LBS. PER STRAND )	43,950

PROJECT NO. B-5639  
DUPLIN COUNTY  
STATION: 23+55.00 -L-

SHEET 3 OF 6

STATE OF NORTH CAROLINA  
DEPARTMENT OF TRANSPORTATION  
RALEIGH  
SUBSTRUCTURE

PRECAST  
PIECE B-01

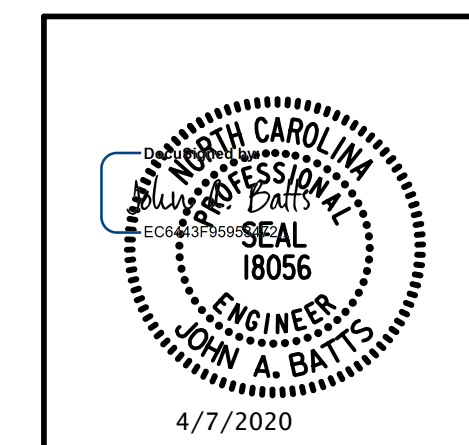
REVISIONS

NO.	BY:	DATE:	NO.	BY:	DATE:
1			3		
2			4		

SHEET NO.  
S-19  
TOTAL SHEETS  
25

PLANS PREPARED BY:

**SE & A**  
SIMPSON ENGINEERS & ASSOCIATES  
5640 Dillard Drive  
Suite 200  
Cary, NC 27518  
(919) 852-0468  
(919) 852-0538 (Fax)  
www.simpsonengr.com  
LICENSURE NO. C-2521



DRAWN BY: T. BANKOVICH DATE: 2-20  
CHECKED BY: J.A. BATTS DATE: 2-20  
DESIGN ENGINEER OF RECORD: J.A. BATTS DATE: 2-20

**DOCUMENT NOT CONSIDERED FINAL  
UNLESS ALL SIGNATURES COMPLETED**