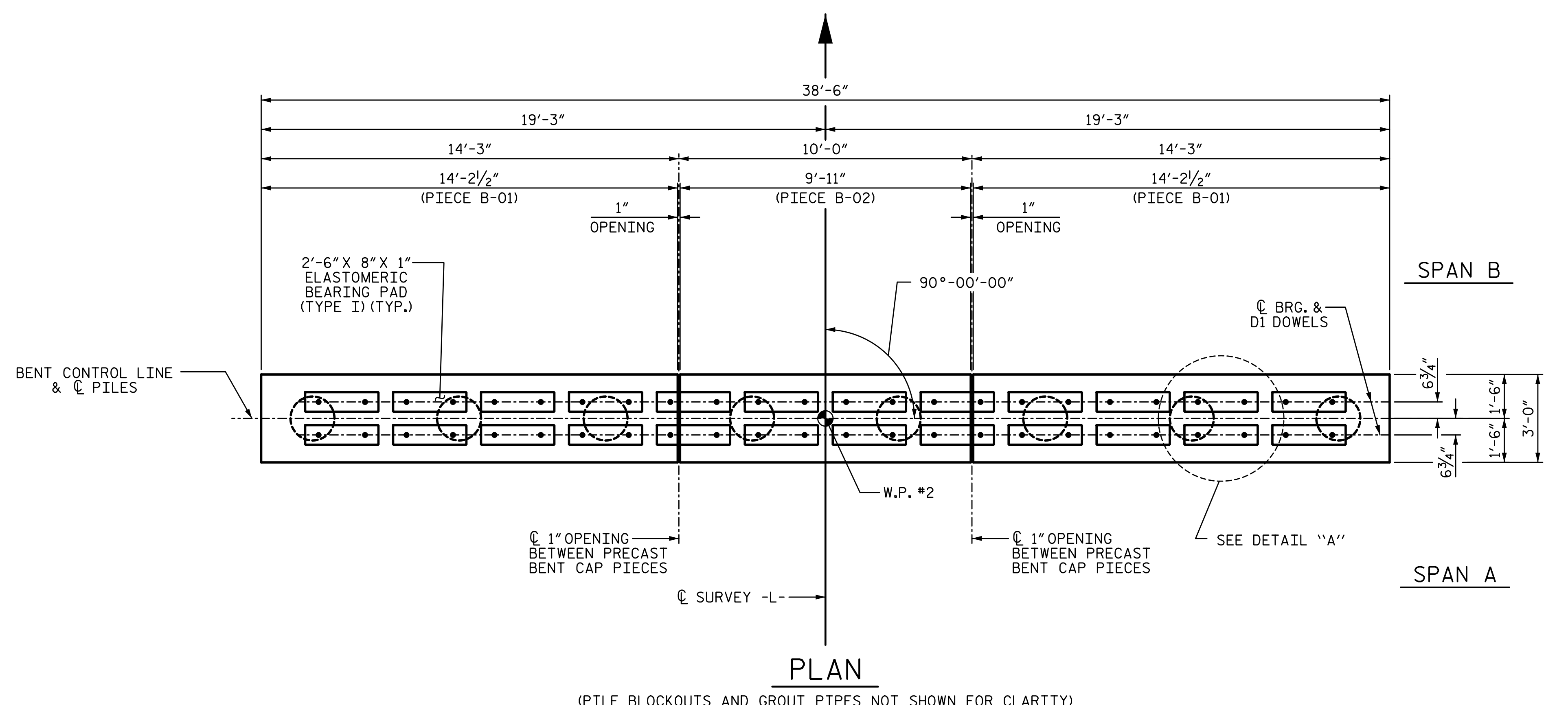
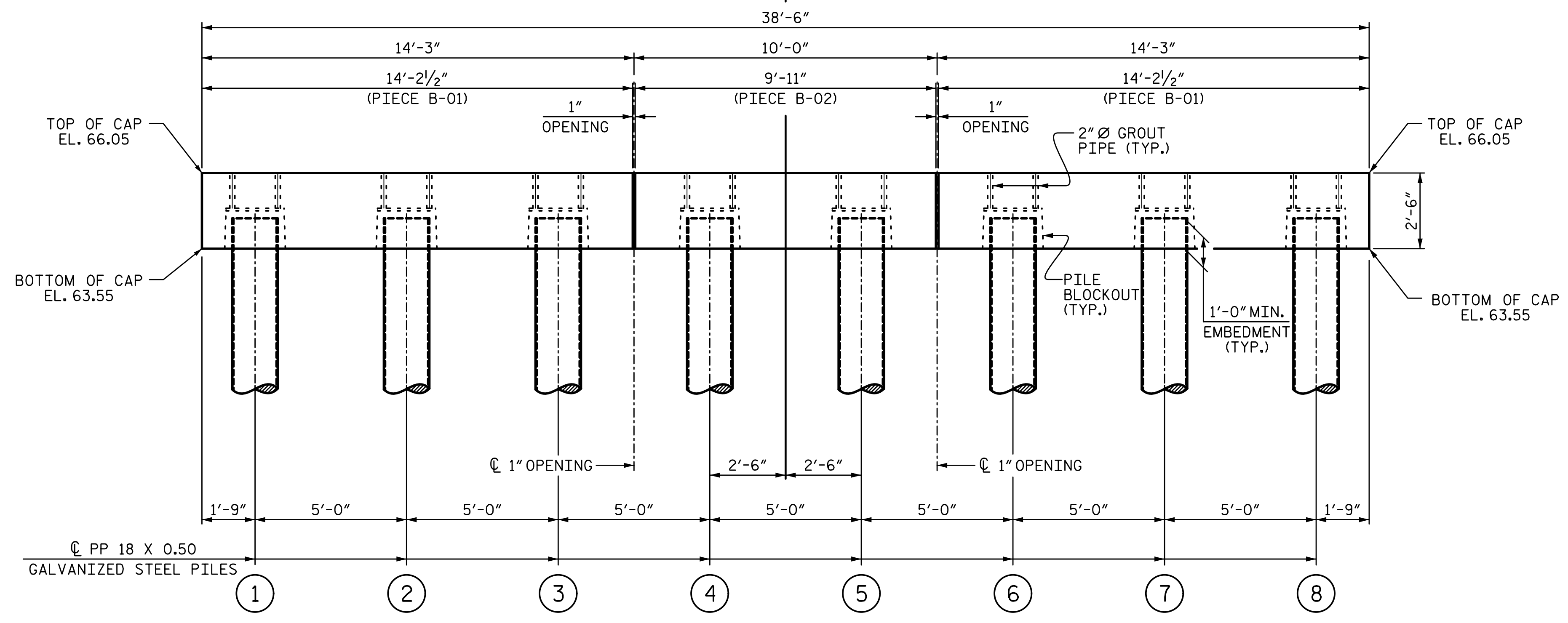


4/7/2020 4:10:50 PM G:\Projects\2018\Division 3 (SEA)\B-5639 (Duplin 36 NC11 over MaxwellCreek)\Structures\Drawings\SMU_B_300036.dgn



PLAN
(PILE BLOCKOUTS AND GROUT PIPES NOT SHOWN FOR CLARITY)

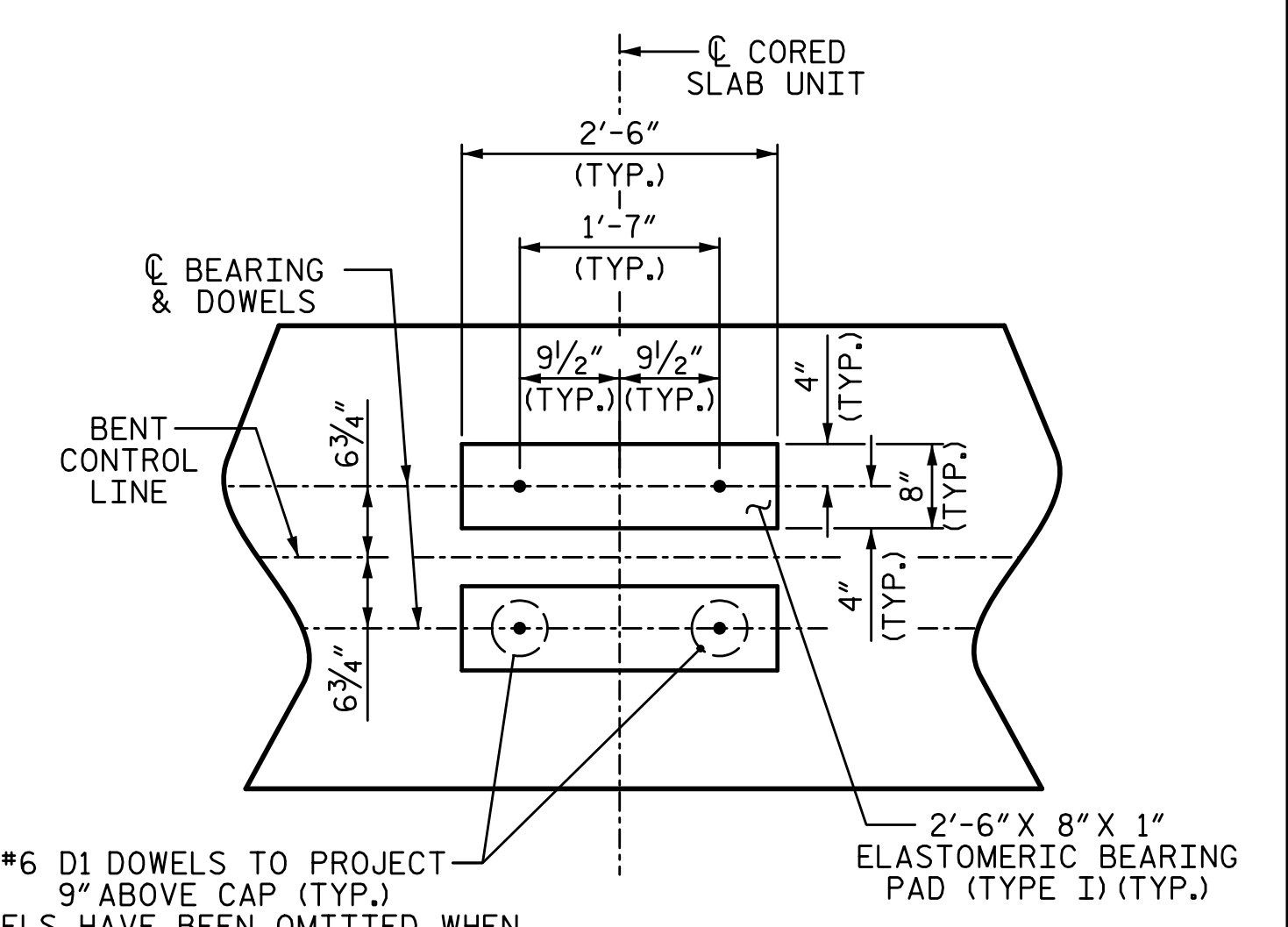


ELEVATION

FOR 2" Ø GROUT PIPE AND PILE BLOCKOUT DETAILS, SEE SHEET 5 OF 6

NOTES:

FOR PRECAST CAP DETAILS AND BILL OF MATERIAL, SEE "PIECE B-01" & "PIECE B-02" SHEETS.
FOR GROUT FOR STRUCTURES, SEE SPECIAL PROVISIONS.
FOR 3'-0" x 2'-6" PRESTRESSED CONCRETE BENT CAPS, SEE SPECIAL PROVISIONS.



DETAIL "A"
(DIMENSIONS ARE TYPICAL EACH BEARING)

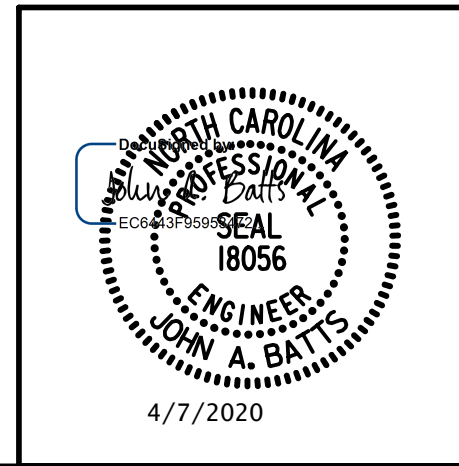
PROJECT NO. B-5639
DUPLIN COUNTY
STATION: 23+55.00 -L-

SHEET 1 OF 6

STATE OF NORTH CAROLINA
DEPARTMENT OF TRANSPORTATION
RALEIGH
SUBSTRUCTURE

BENT 1

PLANS PREPARED BY:
SE & A
SIMPSON ENGINEERS ASSOCIATES
5640 Dillard Drive
Suite 200
Cary, NC 27518
(919) 852-0468
(919) 852-0598 (Fax)
www.simpsonengr.com
LICENSURE NO. C-2521



DRAWN BY: T. BANKOVICH	DATE: 2-20
CHECKED BY: J.A. BATTS	DATE: 2-20
DESIGN ENGINEER OF RECORD: J.A. BATTS	DATE: 2-20

REVISIONS						SHEET NO.
NO.	BY:	DATE:	NO.	BY:	DATE:	S-17
1			3			TOTAL SHEETS
2			4			25

**DOCUMENT NOT CONSIDERED FINAL
UNLESS ALL SIGNATURES COMPLETED**