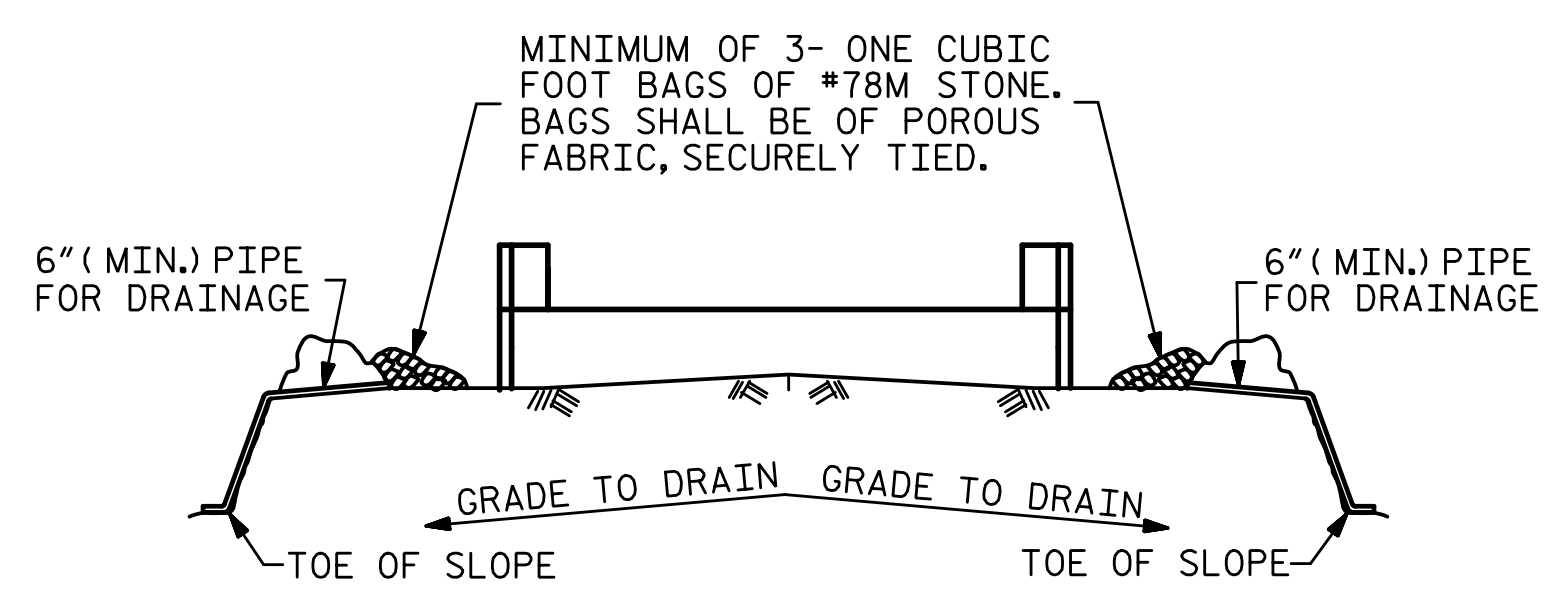


4/7/2020 4:10:50 PM G:\Projects\2018\Division 3 (SEA)\B-5639 (Duplin 36 NC11 over Maxwell Creek)\Structures\Drawings\EB_300036.dgn

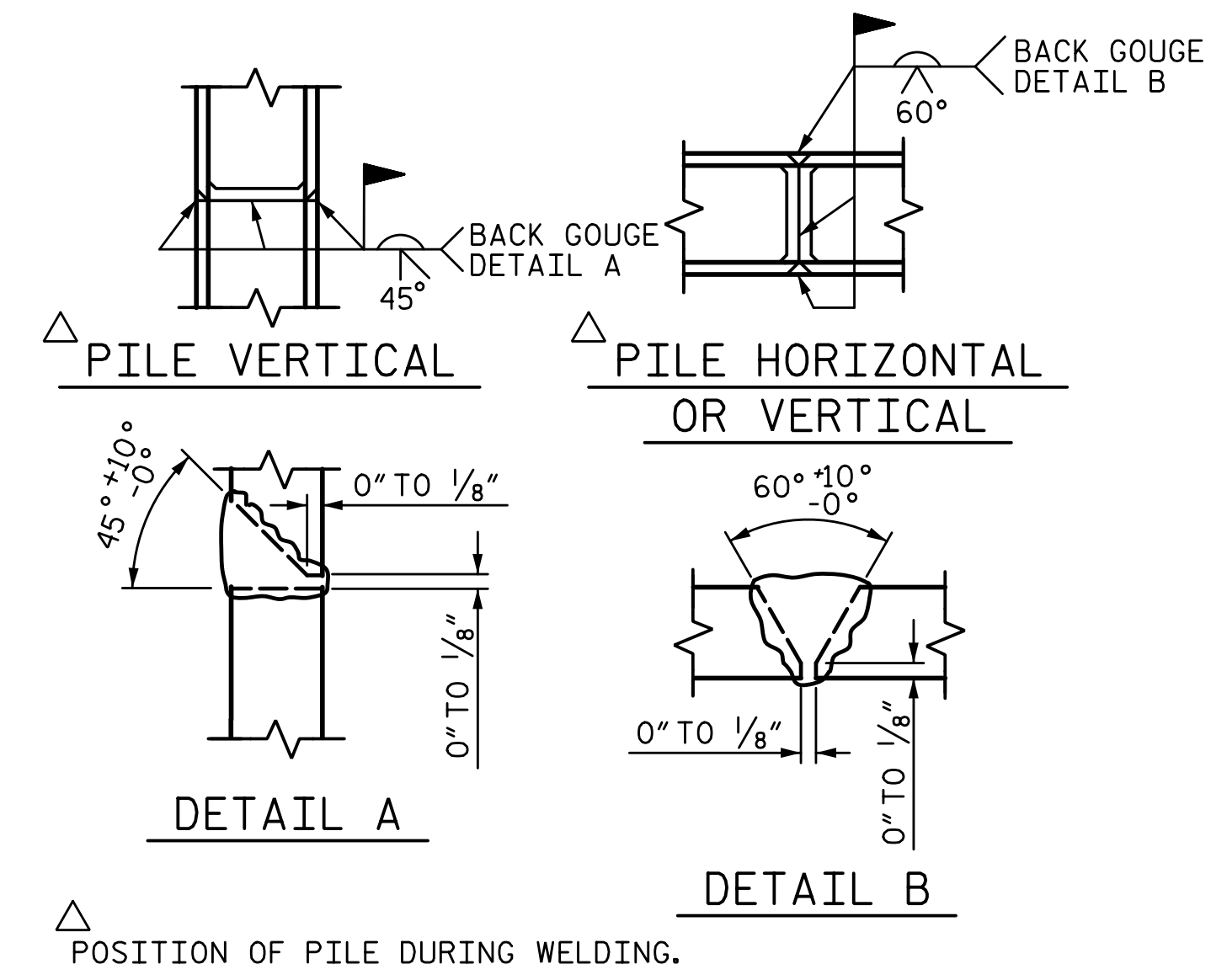


BAGGED STONE AND PIPE SHALL BE PLACED IMMEDIATELY AFTER COMPLETION OF END BENT EXCAVATION. PIPE MAY BE EITHER CONCRETE, CORRUGATED STEEL, CORRUGATED ALUMINUM ALLOY, OR CORRUGATED PLASTIC. PERFORATED PIPE WILL NOT BE ALLOWED.

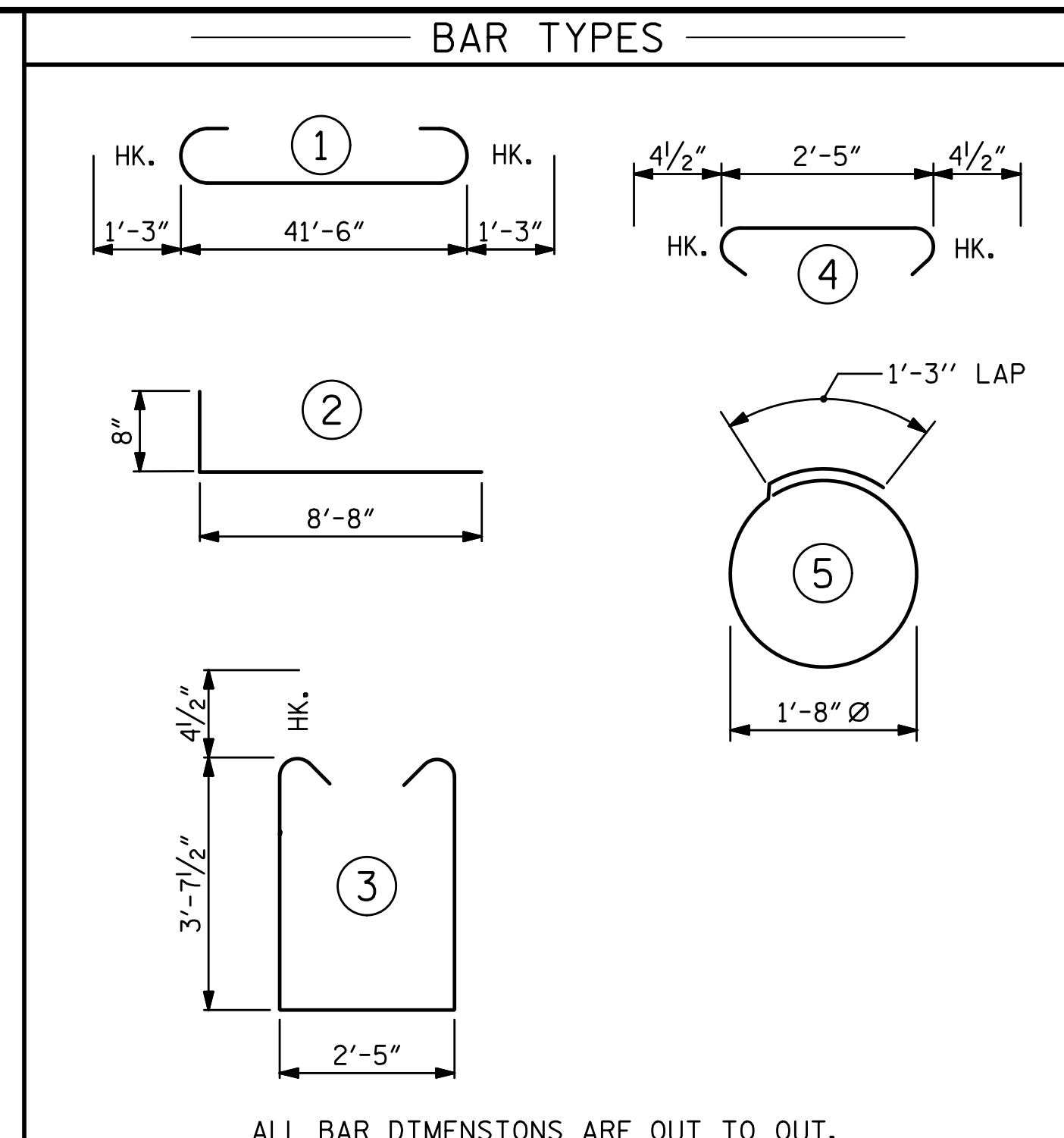
BAGGED STONE SHALL REMAIN IN PLACE UNTIL THE ENGINEER DIRECTS THAT IT BE REMOVED. THE CONTRACTOR SHALL REMOVE AND DISPOSE OF SILT ACCUMULATIONS AT BAGGED STONE WHEN SO DIRECTED BY THE ENGINEER. BAGS SHALL BE REMOVED AND REPLACED WHENEVER THE ENGINEER DETERMINES THAT THEY HAVE DETERIORATED AND LOST THEIR EFFECTIVENESS.

NO SEPARATE PAYMENT WILL BE MADE FOR THIS WORK AND THE ENTIRE COST OF THIS WORK SHALL BE INCLUDED IN THE UNIT CONTRACT PRICE BID FOR THE SEVERAL PAY ITEMS.

TEMPORARY DRAINAGE AT END BENT



PILE SPLICE DETAILS



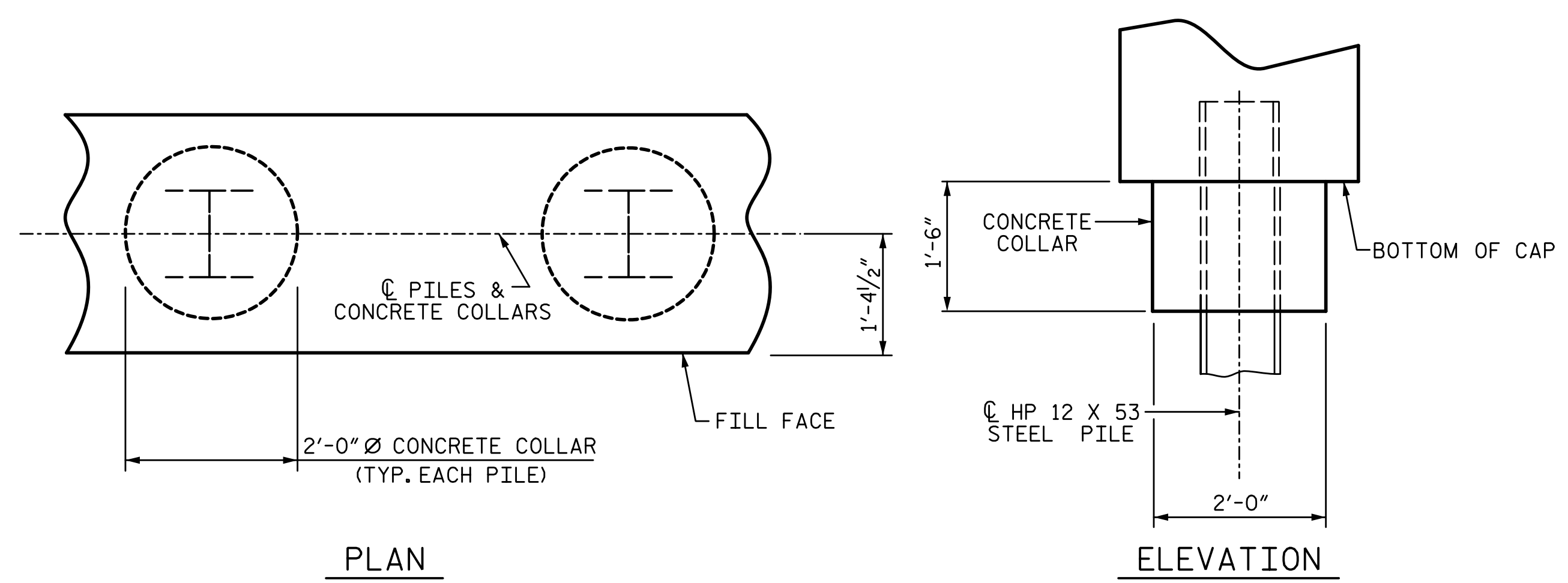
END BENT 1		END BENT 2	
HP 12 X 53 STEEL PILES	NO: 7	HP 12 X 53 STEEL PILES	NO: 7
LIN. FT.= 385		LIN. FT.= 315	
STEEL PILE POINTS	NO: 7	STEEL PILE POINTS	NO: 7
PILE DRIVING EQUIPMENT SETUP FOR HP 12 X 53 STEEL PILES	NO: 7	PILE DRIVING EQUIPMENT SETUP FOR HP 12 X 53 STEEL PILES	NO: 7
PILE REDRIVES	NO: 4	PILE REDRIVES	NO: 4

BILL OF MATERIAL FOR ONE END BENT					
BAR NO.	SIZE	TYPE	LENGTH	WEIGHT	
B1	#8		44'-0"	1197	
B2	#4	STR	22'-1"	413	
B3	#4	STR	2'-5"	18	
D1	#6	STR	1'-6"	54	
H1	#4	2	9'-4"	249	
K1	#4	STR	2'-11"	31	
S1	#4	3	10'-5"	390	
S2	#4	4	3'-2"	118	
S3	#4	5	6'-6"	122	
V1	#4	STR	6'-2"	214	

REINFORCING STEEL (FOR ONE END BENT) 2806 LBS.

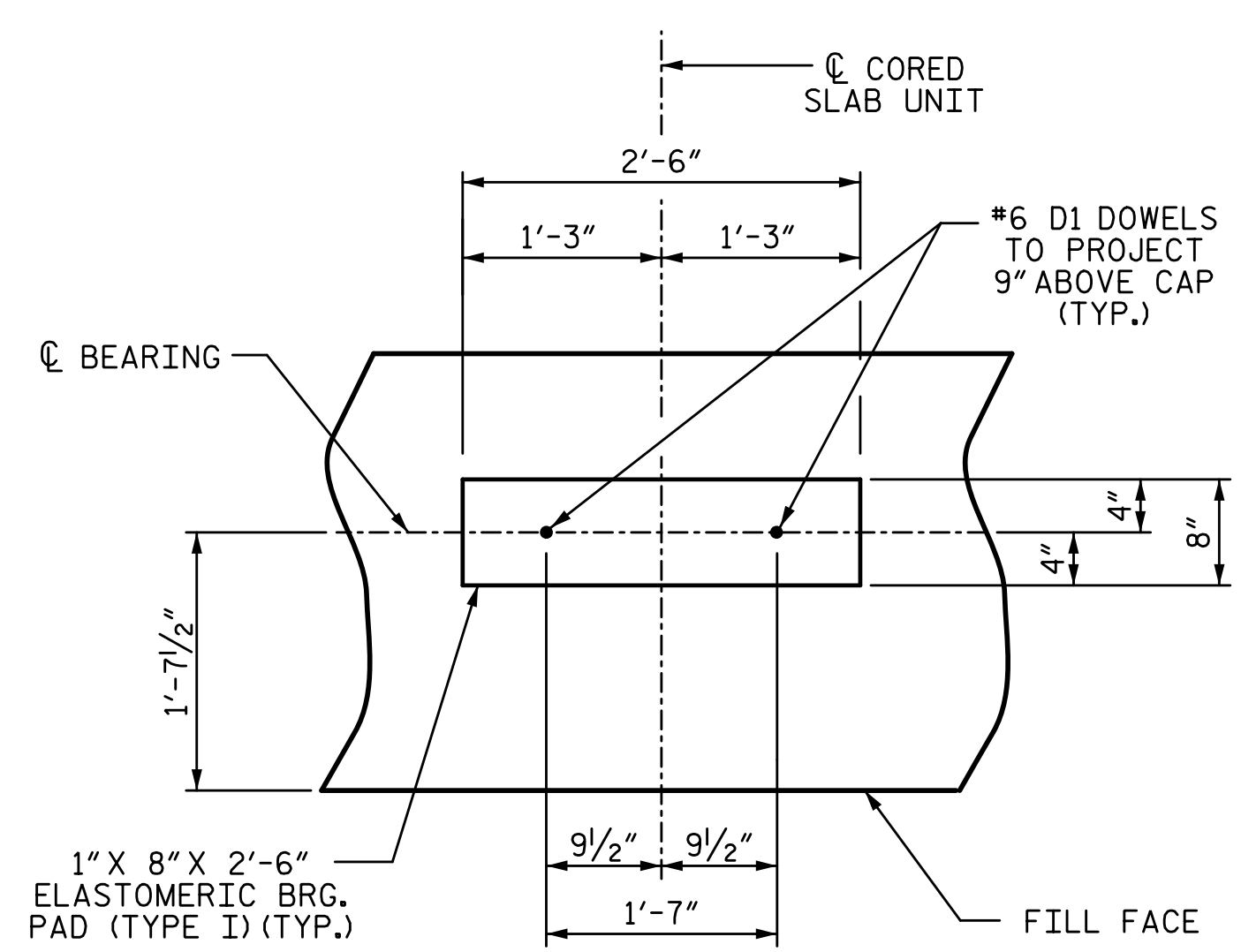
CLASS A CONCRETE BREAKDOWN (FOR ONE END BENT)

POUR 1	CAP, LOWER PART OF WINGS & COLLARS	20.7 C.Y.
POUR 2	UPPER PART OF WINGS	2.3 C.Y.
TOTAL CLASS A CONCRETE		23.0 C.Y.

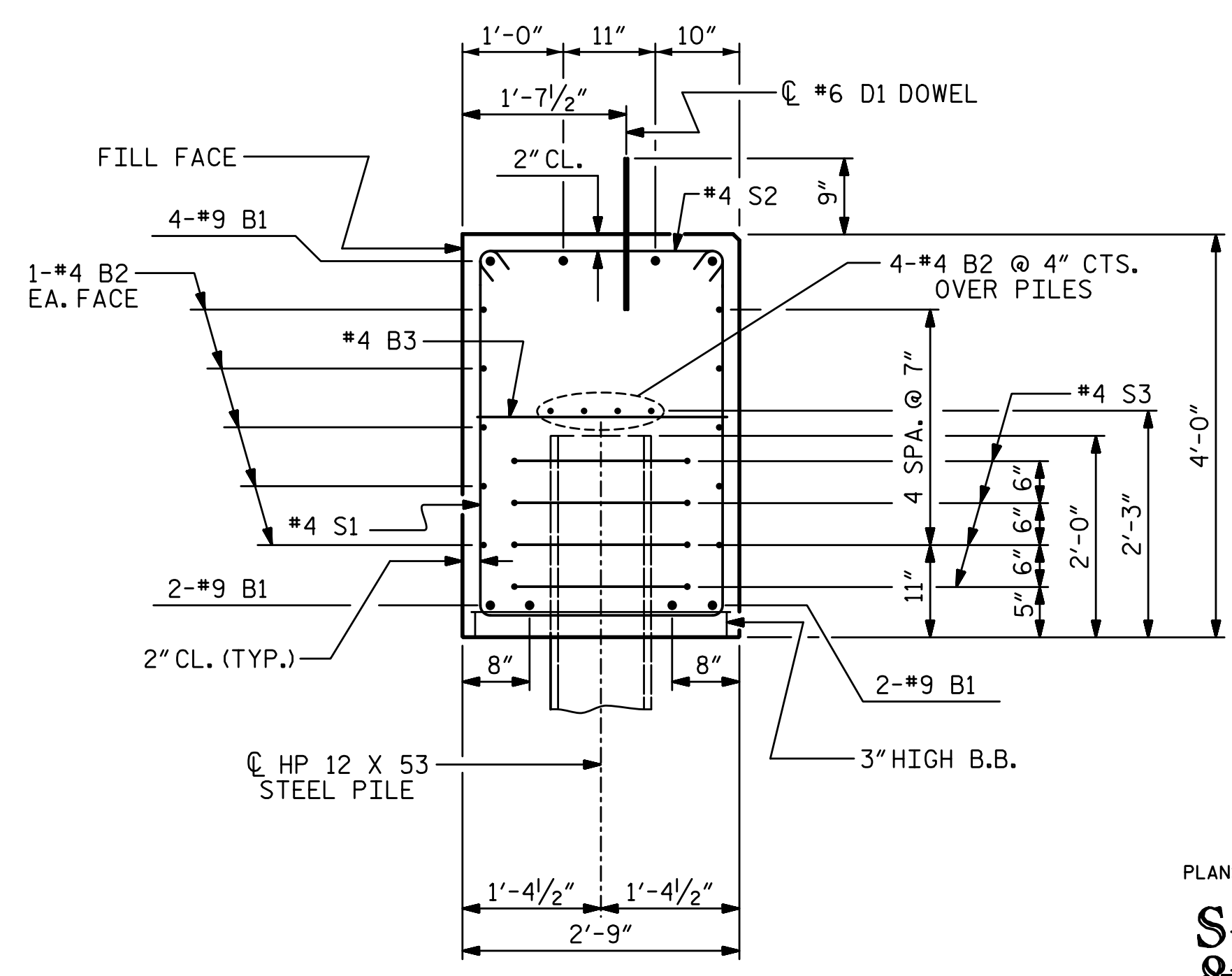


CORROSION PROTECTION FOR STEEL PILES DETAIL

(END BENT 1 SHOWN, END BENT 2 SIMILAR BY ROTATION)



(END BENT 1 SHOWN, END BENT 2 SIMILAR BY ROTATION)



(CONCRETE COLLAR NOT SHOWN FOR CLARITY. SEE "CORROSION PROTECTION FOR STEEL PILES DETAIL.")

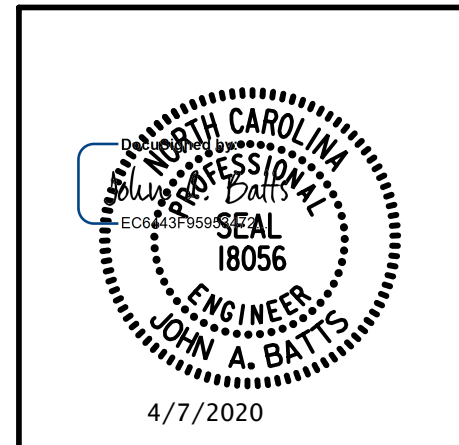
PLANS PREPARED BY:

SEA

IMPSON ENGINEERS ASSOCIATES

5640 Dillard Drive
Suite 200
Cary, NC 27518
(919) 852-0468
(919) 852-0598 (Fax)
www.slmpsonengr.com

LICENSURE NO. C-2521



PROJECT NO. B-5639

DUPLIN COUNTY

STATION: 23+55.00 -L-

SHEET 4 OF 4

STATE OF NORTH CAROLINA
DEPARTMENT OF TRANSPORTATION
RALEIGH
SUBSTRUCTURE

**END BENT 1 & 2
DETAILS**

REVISIONS						SHEET NO.
NO.	BY:	DATE:	NO.	BY:	DATE:	S-16
1			3			TOTAL SHEETS
2			4			25

**DOCUMENT NOT CONSIDERED FINAL
UNLESS ALL SIGNATURES COMPLETED**

DRAWN BY: T. BANKOVICH	DATE: 2-20
CHECKED BY: J.A. BATTS	DATE: 2-20
DESIGN ENGINEER OF RECORD: J.A. BATTS	DATE: 2-20