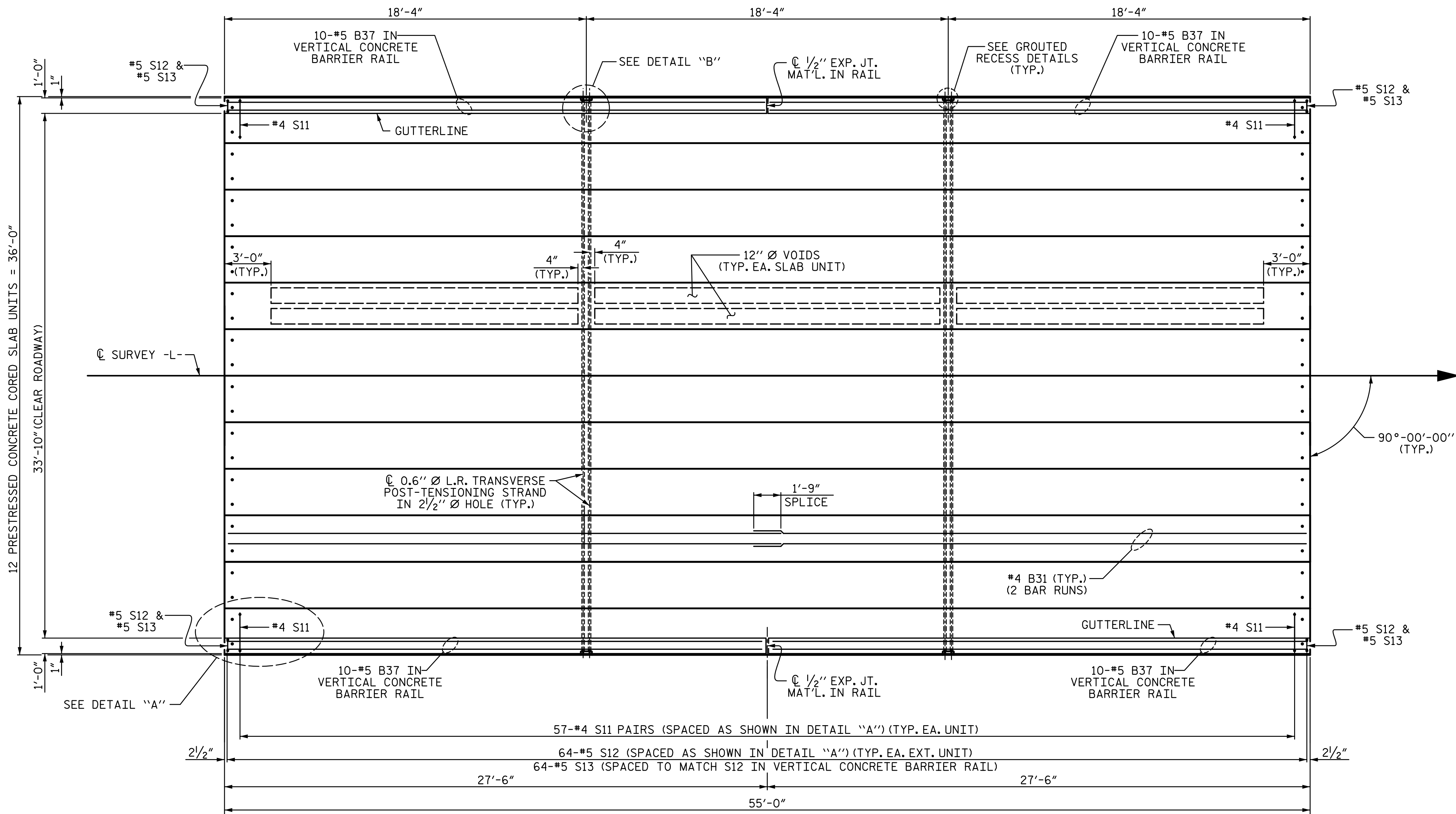
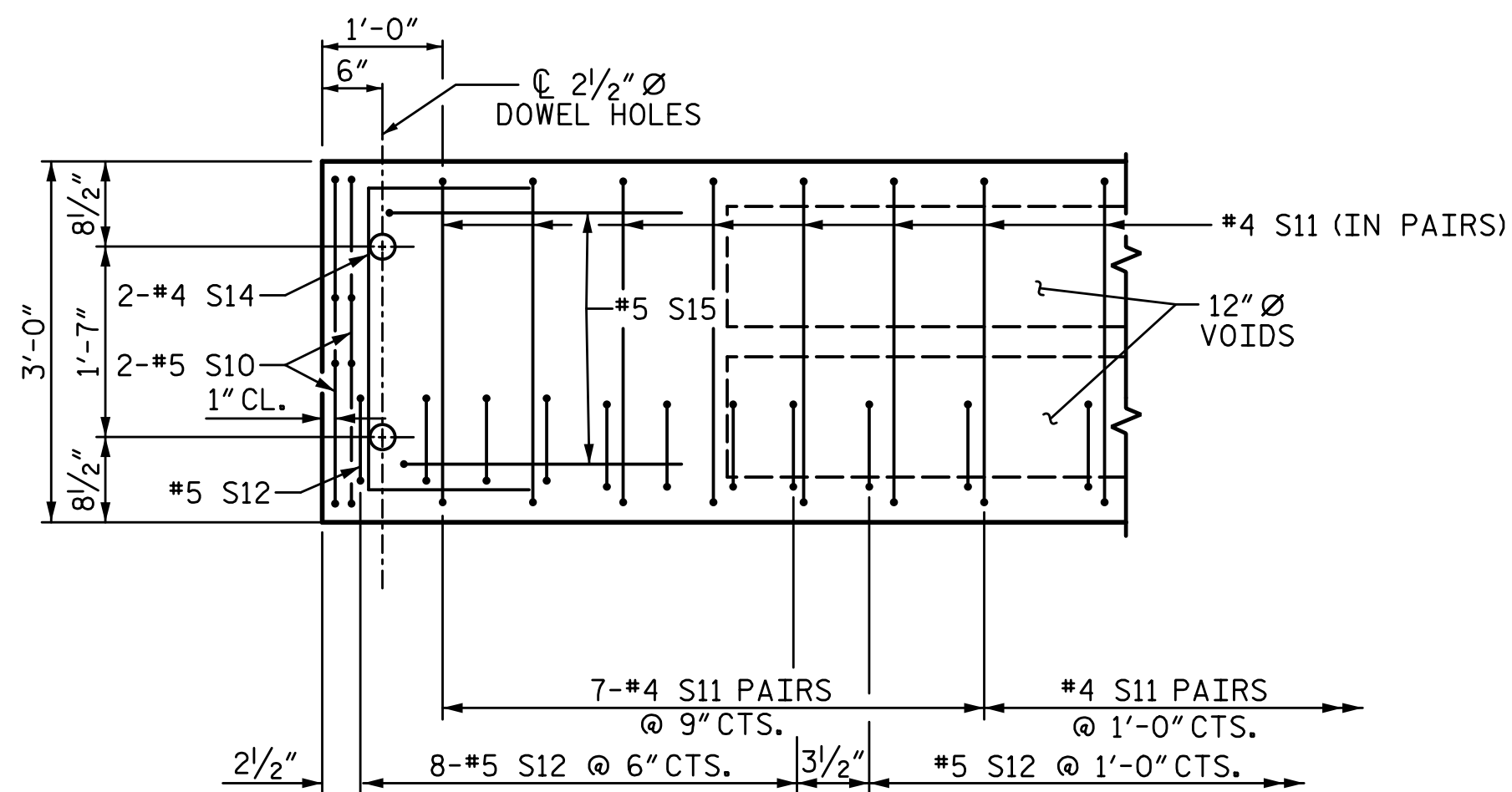


4/7/2020 4:10:48 PM G:\Projects\2018\Division 3 (SEA)\B-5639 (Duplin 36 NC11 over Maxwell Creek)\Structures\Drawings\Final\B5639\_SMJ\_SUPER\_300036.dgn

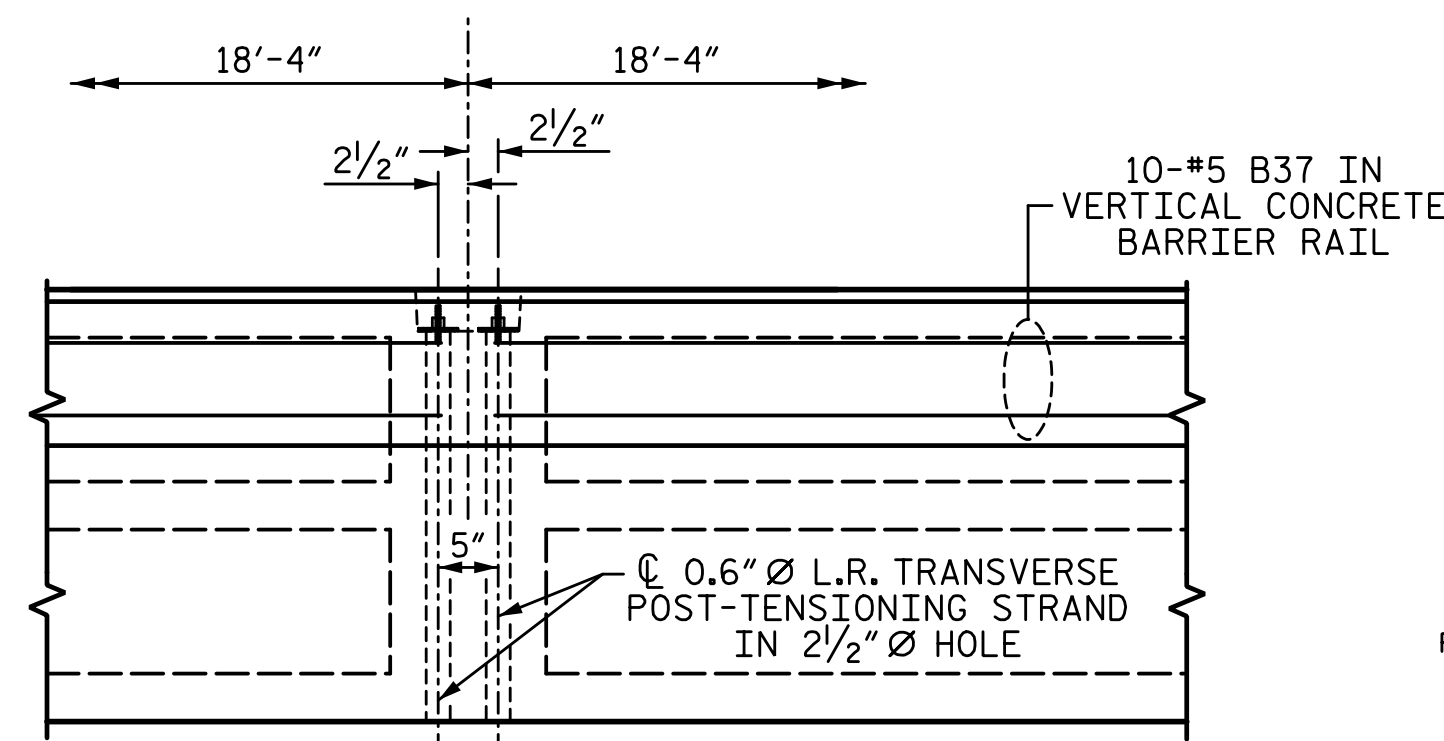


**PLAN OF SPANS A & C**  
FOR FIBER OPTIC CONDUIT SYSTEM DETAILS, SEE SHEET S-11



**DETAIL "A"**

(TYPICAL EACH END OF UNIT)  
NOTE: EXTERIOR UNIT SHOWN - INTERIOR UNIT SIMILAR EXCEPT OMIT #5 S12 BARS.

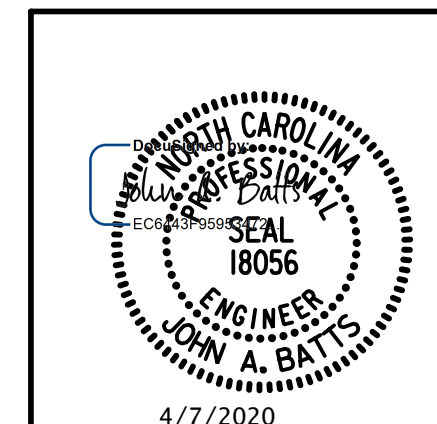


**DETAIL "B"**

\*4 S11 BARS MAY BE SHIFTED AS NECESSARY TO MAINTAIN 1" CLEAR TO GROUDED RECESS AND 2 1/2" TRANSVERSE POST-TENSIONING STRAND HOLES

PLANS PREPARED BY:

**SEA & A**  
SIMPSON ENGINEERS & ASSOCIATES  
5640 Dillard Drive  
Suite 200  
Cary, NC 27518  
(919) 852-0468  
(919) 852-0598 (Fax)  
www.simpsonengr.com  
LICENSURE NO. C-2521



PROJECT NO. B-5639  
DUPLIN COUNTY  
STATION: 23+55.00 -L-

SHEET 2 OF 5

STATE OF NORTH CAROLINA  
DEPARTMENT OF TRANSPORTATION  
RALEIGH  
SUPERSTRUCTURE  
**PLAN OF SPANS A & C**  
(55'-0" UNIT)  
33'-10" CLEAR ROADWAY  
90° SKEW

REVISIONS				SHEET NO.	
NO.	BY:	DATE:	NO.	BY:	DATE:
1			3		
2			4		

TOTAL SHEETS: 25

DRAWN BY: T. BANKOVICH DATE: 2-20  
CHECKED BY: J.A. BATTS DATE: 2-20  
DESIGN ENGINEER OF RECORD: J.A. BATTS DATE: 2-20

**DOCUMENT NOT CONSIDERED FINAL  
UNLESS ALL SIGNATURES COMPLETED**