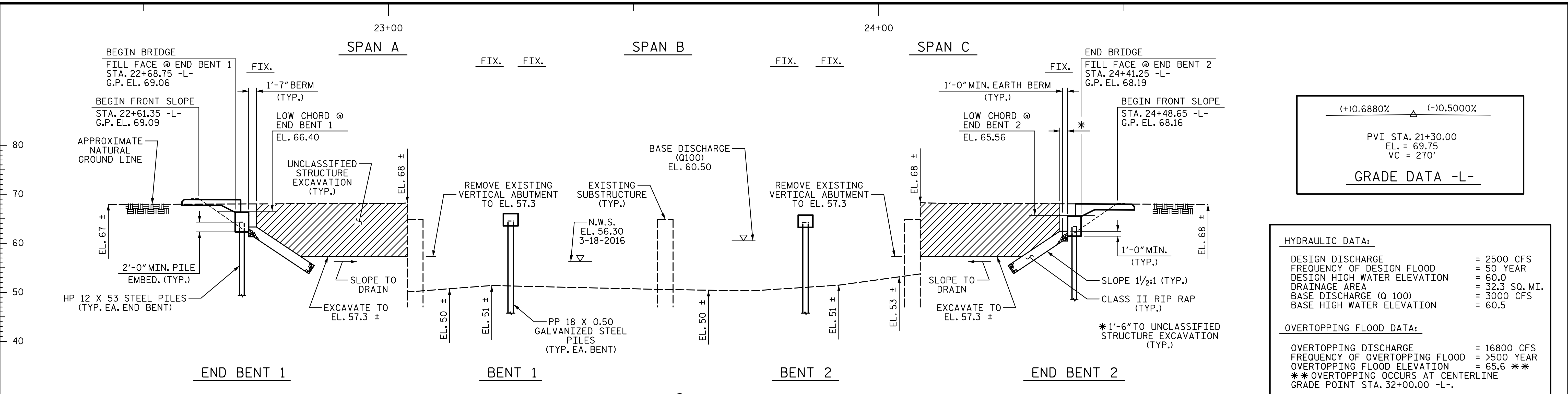


4/7/2020 4:10:46 PM G:\Projects\2018\Division 3 (SEA)\B-5639 (Duplin 36 NC11 over Maxwell Creek)\Structures\Drawings\Final\B5639_SMJ_GD_300036.dgn



GRADE DATA -L-

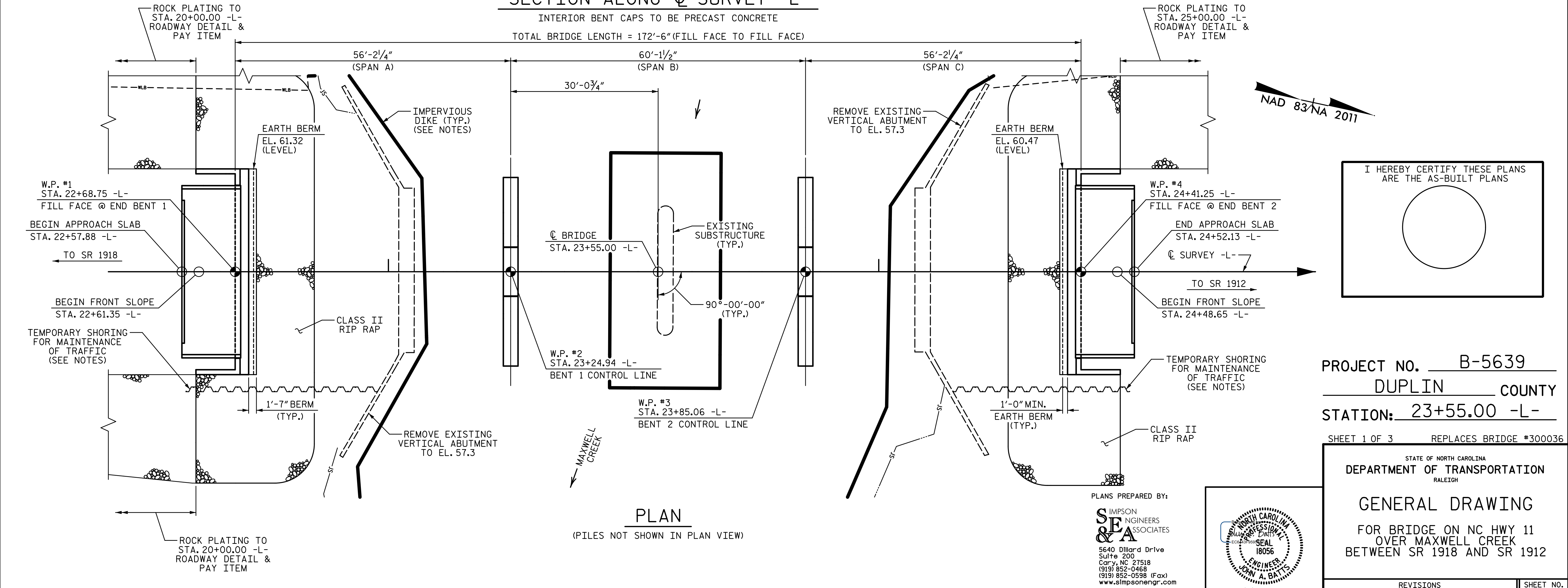
(+)0.6880%	(-)0.5000%
PVI STA. 21+30.00 EL. = 69.75 VC = 270'	

HYDRAULIC DATA:

DESIGN DISCHARGE	= 2500 CFS
FREQUENCY OF DESIGN FLOOD	= 50 YEAR
DESIGN HIGH WATER ELEVATION	= 60.0
DRAINAGE AREA	= 32.3 SQ. MI.
BASE DISCHARGE (Q 100)	= 3000 CFS
BASE HIGH WATER ELEVATION	= 60.5

OVERTOPPING FLOOD DATA:

OVERTOPPING DISCHARGE	= 16800 CFS
FREQUENCY OF OVERTOPPING FLOOD	= >500 YEAR
OVERTOPPING FLOOD ELEVATION	= 65.6 **
** OVERTOPPING OCCURS AT CENTERLINE GRADE POINT STA. 32+00.00 -L-	



I HEREBY CERTIFY THESE PLANS ARE THE AS-BUILT PLANS

PROJECT NO. B-5639
 DUPLIN COUNTY
 STATION: 23+55.00 -L-
 SHEET 1 OF 3 REPLACES BRIDGE #300036

STATE OF NORTH CAROLINA
 DEPARTMENT OF TRANSPORTATION
 RALEIGH

GENERAL DRAWING

FOR BRIDGE ON NC HWY 11
 OVER MAXWELL CREEK
 BETWEEN SR 1918 AND SR 1912

DRAWN BY: T. BANKOVICH DATE: 2-20
 CHECKED BY: J.A. BATTS DATE: 2-20
 DESIGN ENGINEER OF RECORD: J.A. BATTS DATE: 2-20

PLANS PREPARED BY:
SEA & A
 SIMPSON ENGINEERS ASSOCIATES
 5640 Dillard Drive
 Suite 200
 Cary, NC 27518
 (919) 852-0468
 (919) 852-0598 (Fax)
 www.simpsonengr.com
 LICENSURE NO. C-2521

4/7/2020

**DOCUMENT NOT CONSIDERED FINAL
 UNLESS ALL SIGNATURES COMPLETED**

REVISIONS						SHEET NO.	
NO.	BY:	DATE:	NO.	BY:	DATE:	S-2	
1			3			TOTAL SHEETS	
2			4			25	