

PROJECT REFERENCE NO. B-5639	SHEET NO. EC-07/CONST.2B-2
RW SHEET NO.	
ROADWAY DESIGN ENGINEER	HYDRAULICS ENGINEER

NOTE: IMPERVIOUS DIKES MAY BE MODIFIED AND/OR ELIMINATED AS DIRECTED.

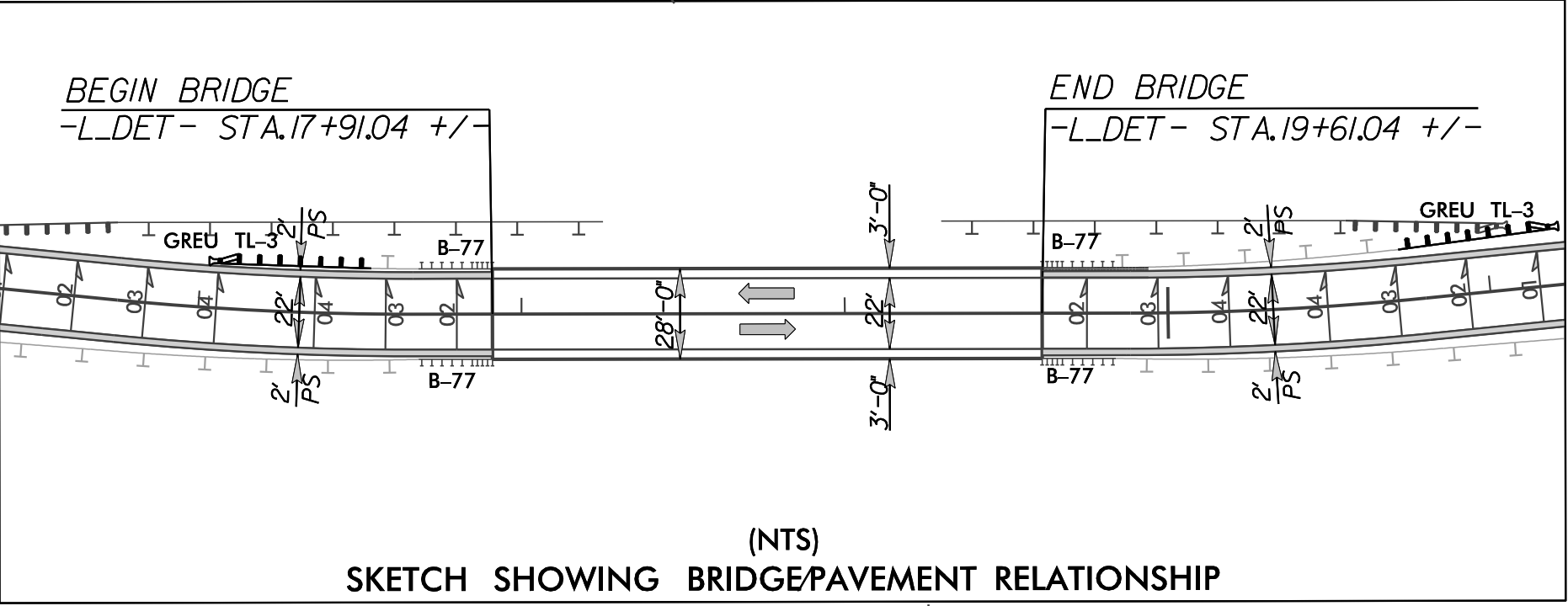
NOTE: UTILIZE SPECIAL STILLING BASIN(S) AS STILLING BASIN WHERE APPLICABLE.

NOTE: UTILIZE COIR FIBER MATTING ADJACENT TO WETLANDS/JURISDICTIONAL AREAS, AND AS DIRECTED.

NOTE: THE OUTSIDE BUFFER, WETLAND OR WATER BOUNDARY SHALL BE CLEARLY MARKED BY HIGHLY VISIBLE FENCING (ORANGE SAFETY FENCE).

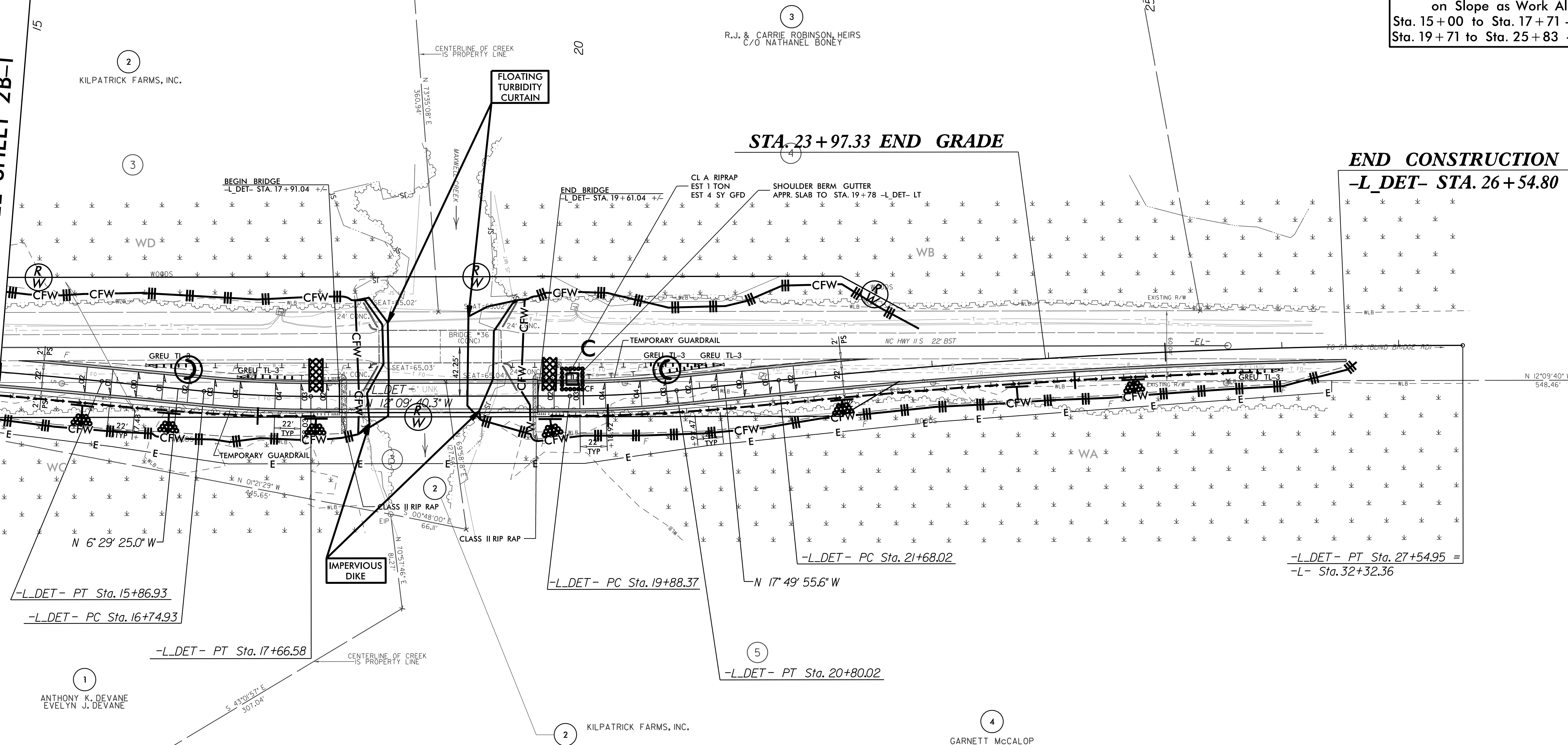
DETOUR EROSION CONTROL FOR CONSTRUCTION SHEET 2B-2

Place Matting for Erosion Control on Slope as Work Allows.
Sta. 15+00 to Sta. 17+71 -L_DET- RT
Sta. 19+71 to Sta. 25+83 -L_DET- RT



NAD 83/2011

MATCHLINE -L_DET- STA. 15+00.00 SEE SHEET 2B-1



STA. 23+97.33 END GRADE

END CONSTRUCTION
-L_DET- STA. 26+54.80

FOR -L_DET- PROFILE, SEE SHEET 7
FOR -L- DESIGN, SEE SHEETS 4 & 5