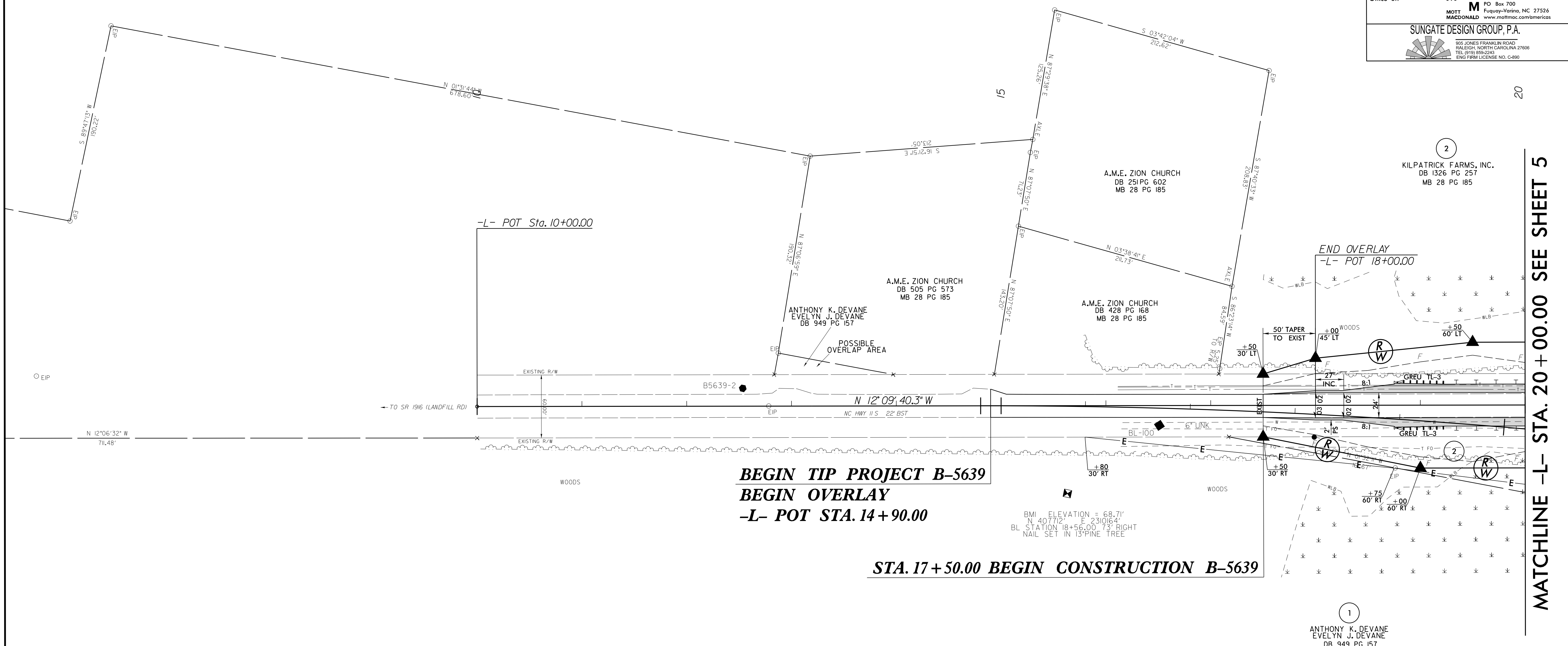


8/17/99

PROJECT REFERENCE NO. <i>B-5639</i>	SHEET NO. 4
RW SHEET NO.	
ROADWAY DESIGN ENGINEER	HYDRAULICS ENGINEER
MOTT MACDONALD 1 & E, LLC LICENSE NO. F-0669	
<b>DOCUMENT NOT CONSIDERED FINAL UNLESS ALL SIGNATURES COMPLETED</b>	
Prepared in the Office of:	<b>M</b> MOTT MACDONALD PO Box 700 Fuquay-Varina, NC 27524 www.mottmac.com/americas
<b>SUNGATE DESIGN GROUP, P.A.</b> 905 JONES FRANKLIN ROAD SALISBURY, NORTH CAROLINA 27608 TEL: (919) 886-2245 ENG FIRM LICENSE NO. C-890	

NAD 83/2011



**BEGIN TIP PROJECT B-5639**  
**BEGIN OVERLAY**  
**-L- POT STA. 14+90.00**

**STA. 17+50.00 BEGIN CONSTRUCTION B-5639**

B.M. ELEVATION = 68.71'  
 N 40° 7' 12" E 2310.64'  
 BL STATION 18+56.00, 73' RIGHT  
 NAIL SET IN 13" PINE TREE

1  
 ANTHONY K. DEVANE  
 EVELYN J. DEVANE  
 DB 949 PG 157

2  
 KILPATRICK FARMS, INC.  
 DB 1326 PG 257  
 MB 28 PG 185

MATCHLINE -L- STA. 20+00.00 SEE SHEET 5

FOR -L- PROFILE, SEE SHEET 6  
 FOR DETOUR DESIGN, SEE SHEETS 2B-1 & 2B-2

08/04/27  
 R:\Projects\B5639\Proj\B5639\_rdy\_psh4.dgn