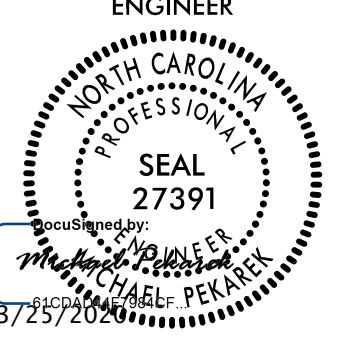
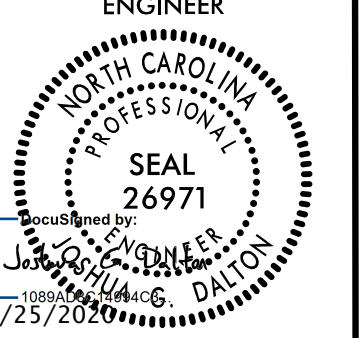
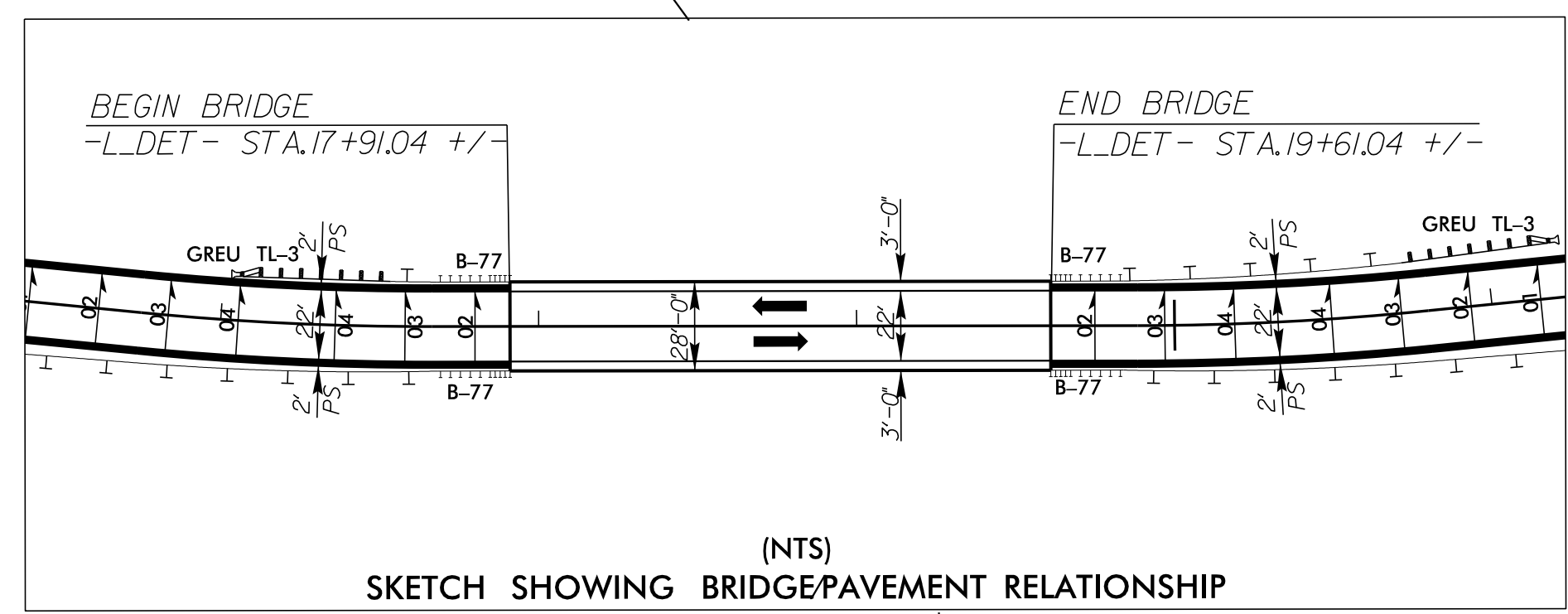
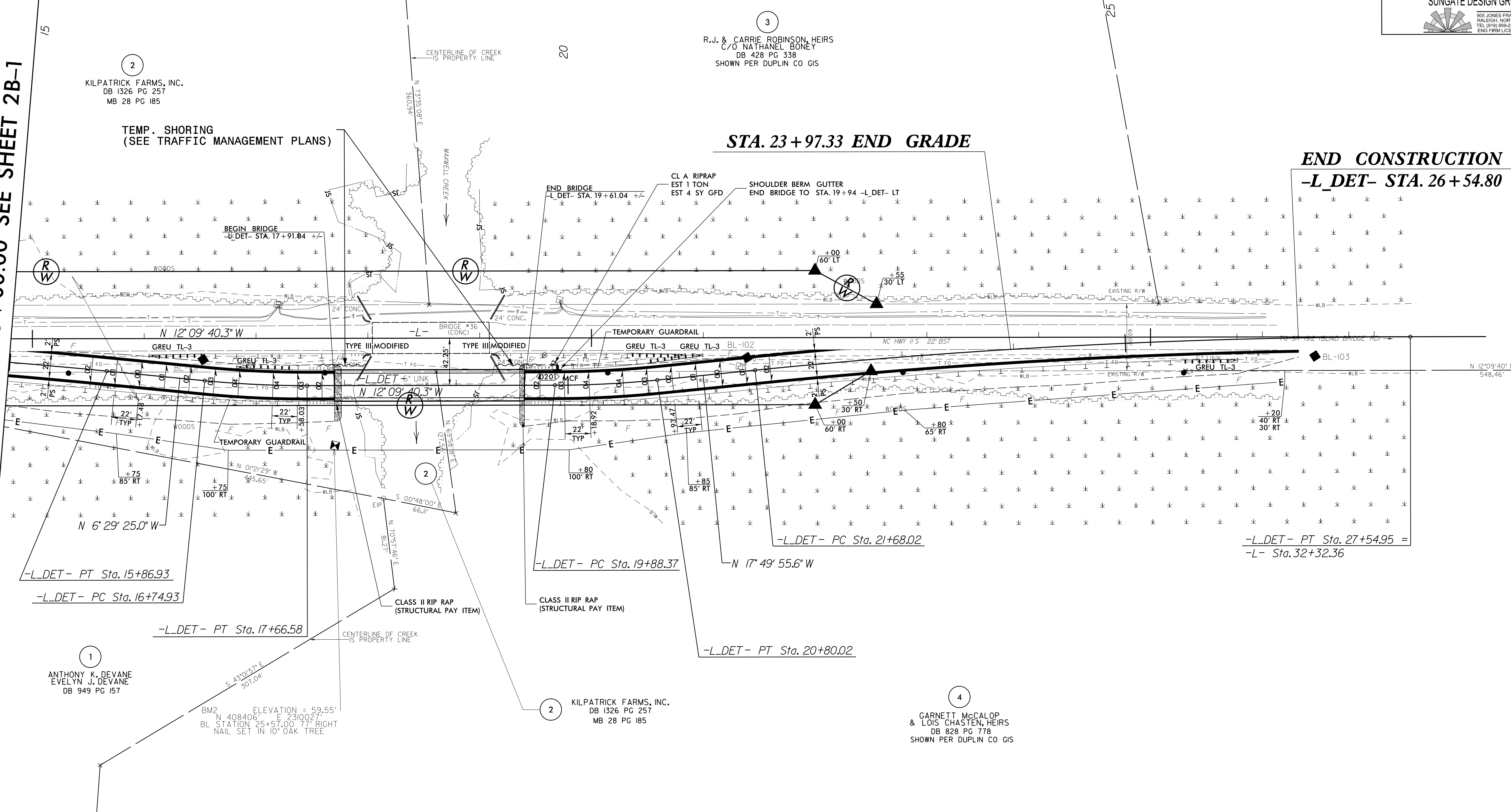


PROJECT REFERENCE NO. B-5639	SHEET NO. 2B-2
R/W SHEET NO.	
ROADWAY DESIGN ENGINEER 	HYDRAULICS ENGINEER 
<p>DOCUMENT NOT CONSIDERED FINAL UNLESS ALL SIGNATURES COMPLETED</p> <p>Prepared in the Office of: M MOTT MACDONALD 1 & E, LLC License No. F-0669</p> <p>PO Box 700 Fuquay-Varina, NC 27524 www.motmac.com/americas</p> <p>SUNGATE DESIGN GROUP, P.A. 905 JONES FRANKLIN ROAD SALISBURY, NORTH CAROLINA 27168 TEL: (919) 886-2424 ENG FIRM LICENSE NO. C-890</p>	



NAD 832011

MATCHLINE -L_DET- STA. 15 + 00.00 SEE SHEET 2B-1



-L_DET-			
PI Sta 12+93.70	PI Sta 17+20.79	PI Sta 20+34.23	PI Sta 24+61.72
$\Delta = 5^{\circ} 40' 15.3" (RT)$	$\Delta = 5^{\circ} 40' 15.3" (LT)$	$\Delta = 5^{\circ} 40' 15.3" (LT)$	$\Delta = 5^{\circ} 40' 15.3" (RT)$
$D = 0^{\circ} 57' 58.3"$	$D = 6^{\circ} 11' 14.8"$	$D = 6^{\circ} 11' 14.8"$	$D = 0^{\circ} 57' 58.3"$
$L = 586.93'$	$L = 91.65'$	$L = 91.65'$	$L = 586.93'$
$T = 293.70'$	$T = 45.86'$	$T = 45.86'$	$T = 293.70'$
$R = 5,930.00'$	$R = 926.00'$	$R = 926.00'$	$R = 5,930.00'$
$V = 50 MPH$	$V = 50 MPH$	$V = 50 MPH$	$V = 50 MPH$
$SE = 0.02$	$SE = 0.04$	$SE = 0.04$	$SE = 0.02$
$RO = 44.00'$	$RO = 88.00'$	$RO = 88.00'$	$RO = 44.00'$

FOR -L_DET- PROFILE, SEE SHEET 7
 FOR -L- DESIGN, SEE SHEETS 4 & 5

08/01/24
 R:\Roadway\Pro\B5639_rdy_psh_2B-2.dgn
 8/17/19