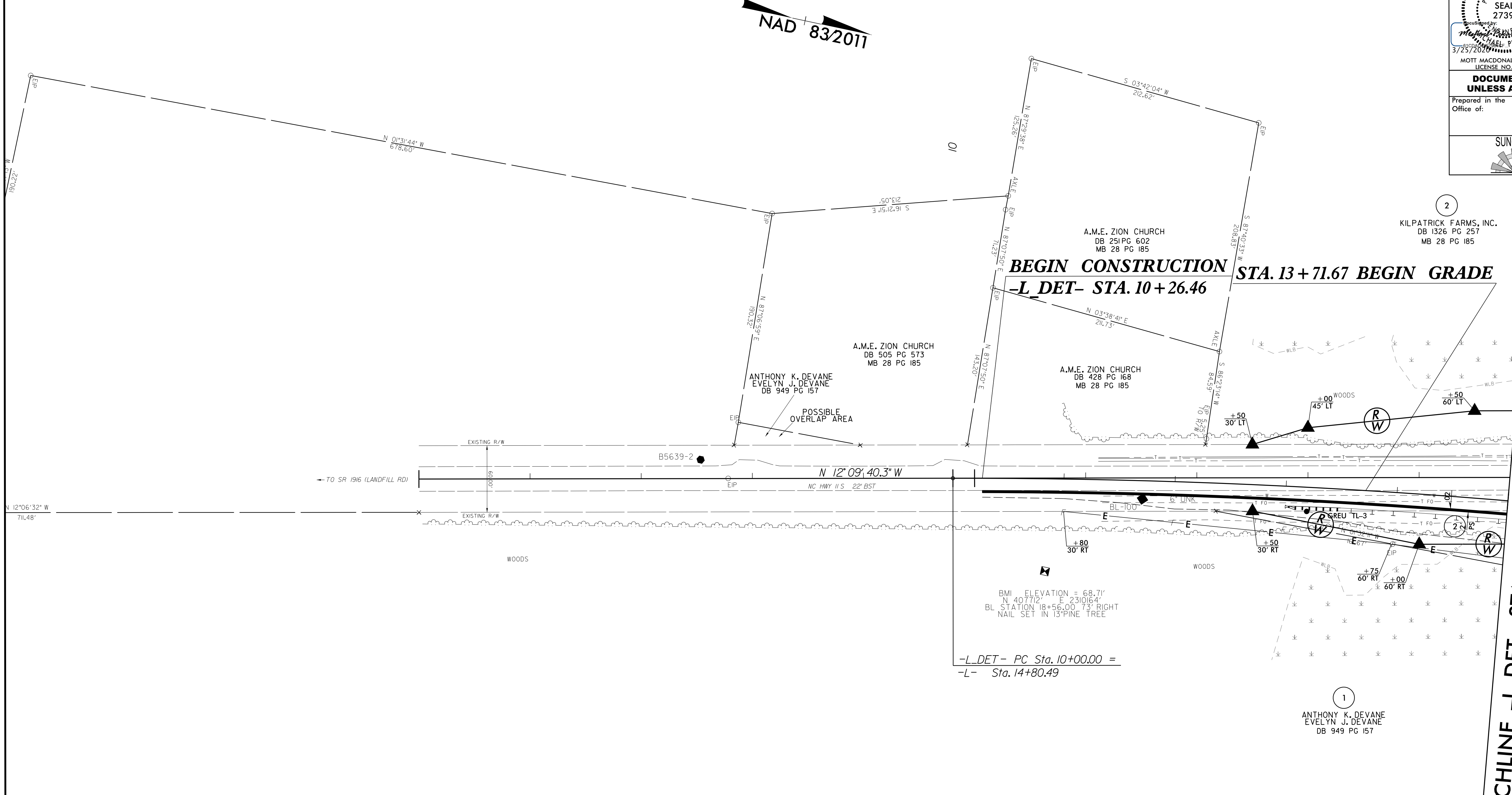


8/17/19

PROJECT REFERENCE NO. B-5639	SHEET NO. 2B-1
RW SHEET NO.	
ROADWAY DESIGN ENGINEER 	HYDRAULICS ENGINEER 
MOTT MACDONALD 1 & E, LLC LICENSE NO. F-0669	
<b>DOCUMENT NOT CONSIDERED FINAL UNLESS ALL SIGNATURES COMPLETED</b>	
Prepared in the Office of:	<b>M</b> PO Box 700 MOTT MACDONALD Fuquay-Varina, NC 27524 www.motmac.com/americas
SUNGATE DESIGN GROUP, P.A. 905 JONES FRANKLIN ROAD DALLIEN NORTH CAROLINA 27608 TEL: (919) 886-2245 ENG FIRM LICENSE NO. C-890	



MATCHLINE -L\_DET- STA. 15 + 00.00 SEE SHEET 2B-2

-L\_DET- PC Sta. 10+00.00 =  
-L- Sta. 14+80.49

-L\_DET-

PI Sta 12+93.70  
 $\Delta = 5^\circ 40' 15.3" (RT)$   
 $D = 0^\circ 57' 58.3"$   
 $L = 586.93'$   
 $T = 293.70'$   
 $R = 5,930.00'$   
 $V = 50 \text{ MPH}$   
 $SE = 0.02$   
 $RO = 44.00'$

FOR -L\_DET- PROFILE, SEE SHEET 7  
FOR -L- DESIGN, SEE SHEETS 4 & 5

08/04/23  
R:\Roadway\Proj\B5639\_rdy\_psh\_2B-1.dgn  
BIEBTL