

REFERENCE: B-5534

PROJECT: 55034

STATE OF NORTH CAROLINA
DEPARTMENT OF TRANSPORTATION
DIVISION OF HIGHWAYS
GEOTECHNICAL ENGINEERING UNIT

STRUCTURE
SUBSURFACE INVESTIGATION

COUNTY DUPLIN
PROJECT DESCRIPTION BRIDGE NO. 82 ON
NC HIGHWAY 1/III OVER BURNT COAT CREEK
AT -L- STATION 21+68.5

CONTENTS

SHEET NO.	DESCRIPTION
1	TITLE SHEET
2	LEGEND (SOIL & ROCK)
3	SITE PLAN
4	PROFILE
5 - 8	BORE LOGS
9	SOIL TEST RESULTS
10	SITE PHOTOGRAPHS

STATE	STATE PROJECT REFERENCE NO.	SHEET NO.	TOTAL SHEETS
N.C.	B-5534	1	10

CAUTION NOTICE

THE SUBSURFACE INFORMATION AND THE SUBSURFACE INVESTIGATION ON WHICH IT IS BASED WERE MADE FOR THE PURPOSE OF STUDY, PLANNING AND DESIGN, AND NOT FOR CONSTRUCTION OR PAY PURPOSES. THE VARIOUS FIELD BORING LOGS, ROCK CORES AND SOIL TEST DATA AVAILABLE MAY BE REVIEWED OR INSPECTED IN RALEIGH BY CONTACTING THE N. C. DEPARTMENT OF TRANSPORTATION, GEOTECHNICAL ENGINEERING UNIT AT 1919 TOTT-6850. THE SUBSURFACE PLANS AND REPORTS, FIELD BORING LOGS, ROCK CORES AND SOIL TEST DATA ARE NOT PART OF THE CONTRACT.

GENERAL SOIL AND ROCK STRATA DESCRIPTIONS AND INDICATED BOUNDARIES ARE BASED ON A GEOTECHNICAL INTERPRETATION OF ALL AVAILABLE SUBSURFACE DATA AND MAY NOT NECESSARILY REFLECT THE ACTUAL SUBSURFACE CONDITIONS BETWEEN BORINGS OR BETWEEN SAMPLED STRATA WITHIN THE BOREHOLE. THE LABORATORY SAMPLE DATA AND THE IN SITU (IN-PLACE) TEST DATA CAN BE RELIED ON ONLY TO THE DEGREE OF RELIABILITY INHERENT IN THE STANDARD TEST METHOD. THE OBSERVED WATER LEVELS OR SOIL MOISTURE CONDITIONS INDICATED IN THE SUBSURFACE INVESTIGATIONS ARE AS RECORDED AT THE TIME OF THE INVESTIGATION. THESE WATER LEVELS OR SOIL MOISTURE CONDITIONS MAY VARY CONSIDERABLY WITH TIME ACCORDING TO CLIMATIC CONDITIONS INCLUDING TEMPERATURES, PRECIPITATION AND WIND, AS WELL AS OTHER NON-CLIMATIC FACTORS.

THE BIDDER OR CONTRACTOR IS CAUTIONED THAT DETAILS SHOWN ON THE SUBSURFACE PLANS ARE PRELIMINARY ONLY AND IN MANY CASES THE FINAL DESIGN DETAILS ARE DIFFERENT. FOR BIDDING AND CONSTRUCTION PURPOSES, REFER TO THE CONSTRUCTION PLANS AND DOCUMENTS FOR FINAL DESIGN INFORMATION ON THIS PROJECT. THE DEPARTMENT DOES NOT WARRANT OR GUARANTEE THE SUFFICIENCY OR ACCURACY OF THE INVESTIGATION MADE, NOR THE INTERPRETATIONS MADE, OR OPINION OF THE DEPARTMENT AS TO THE TYPE OF MATERIALS AND CONDITIONS TO BE ENCOUNTERED. THE BIDDER OR CONTRACTOR IS CAUTIONED TO MAKE SUCH INDEPENDENT SUBSURFACE INVESTIGATIONS AS HE DEEMS NECESSARY TO SATISFY HIMSELF AS TO CONDITIONS TO BE ENCOUNTERED ON THE PROJECT. THE CONTRACTOR SHALL HAVE NO CLAIM FOR ADDITIONAL COMPENSATION OR FOR AN EXTENSION OF TIME FOR ANY REASON RESULTING FROM THE ACTUAL CONDITIONS ENCOUNTERED AT THE SITE DIFFERING FROM THOSE INDICATED IN THE SUBSURFACE INFORMATION.

- NOTES:
- THE INFORMATION CONTAINED HEREIN IS NOT IMPLIED OR GUARANTEED BY THE N. C. DEPARTMENT OF TRANSPORTATION AS ACCURATE NOR IS IT CONSIDERED PART OF THE PLANS, SPECIFICATIONS OR CONTRACT FOR THE PROJECT.
 - BY HAVING REQUESTED THIS INFORMATION, THE CONTRACTOR SPECIFICALLY WAIVES ANY CLAIMS FOR INCREASED COMPENSATION OR EXTENSION OF TIME BASED ON DIFFERENCES BETWEEN THE CONDITIONS INDICATED HEREIN AND THE ACTUAL CONDITIONS AT THE PROJECT SITE.

PERSONNEL

CATLIN PERSONNEL

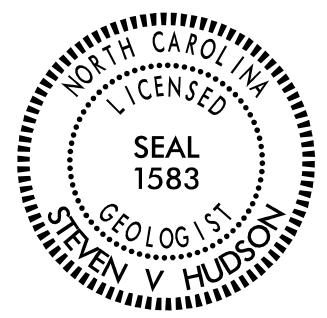
INVESTIGATED BY S. V. HUDSON

DRAWN BY S. V. HUDSON

CHECKED BY J. L. STONE, LG

SUBMITTED BY S. V. HUDSON, LG

DATE AUGUST 2019



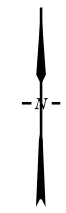
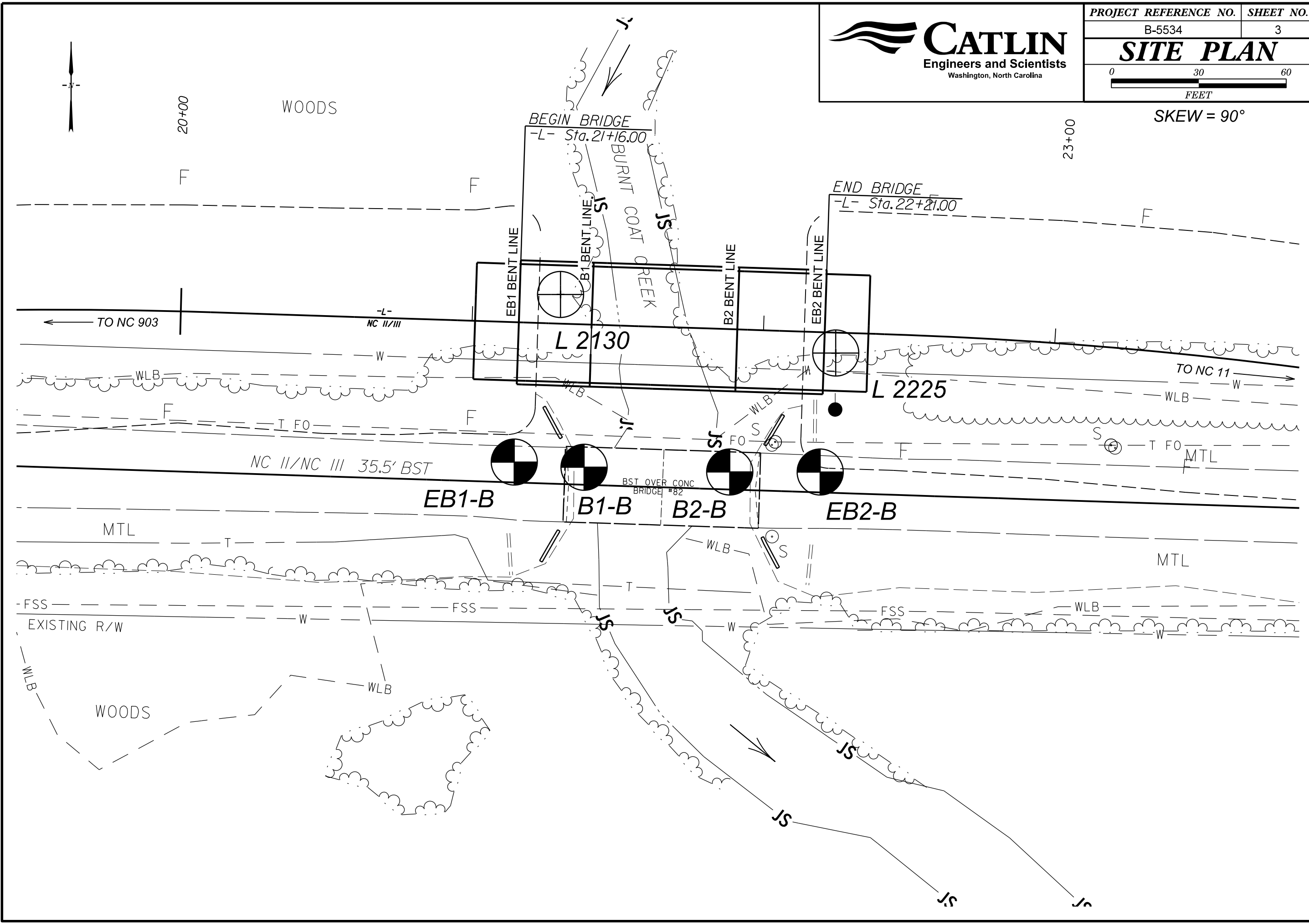
DocuSigned by:

 01DB23BB746D469...
 SIGNATURE DATE 1/2/2020

DOCUMENT NOT CONSIDERED FINAL
UNLESS ALL SIGNATURES COMPLETED

**NORTH CAROLINA DEPARTMENT OF TRANSPORTATION
DIVISION OF HIGHWAYS
GEOTECHNICAL ENGINEERING UNIT
SUBSURFACE INVESTIGATION
SOIL AND ROCK LEGEND, TERMS, SYMBOLS, AND ABBREVIATIONS**

SOIL DESCRIPTION										GRADATION										ROCK DESCRIPTION										TERMS AND DEFINITIONS									
SOIL IS CONSIDERED UNCONSOLIDATED, SEMI-CONSOLIDATED, OR WEATHERED EARTH MATERIALS THAT CAN BE PENETRATED WITH A CONTINUOUS FLIGHT POWER AUGER AND YIELD LESS THAN 100 BLOWS PER FOOT ACCORDING TO THE STANDARD PENETRATION TEST (AASHTO T 208, ASTM D1586). SOIL CLASSIFICATION IS BASED ON THE AASHTO SYSTEM. BASIC DESCRIPTIONS GENERALLY INCLUDE THE FOLLOWING: CONSISTENCY, COLOR, TEXTURE, MOISTURE, AASHTO CLASSIFICATION, AND OTHER PERTINENT FACTORS SUCH AS MINERALOGICAL COMPOSITION, ANGULARITY, STRUCTURE, PLASTICITY, ETC. FOR EXAMPLE, VERY STIFF, GRAY, SILTY CLAY, MOIST WITH INTERBEDDED FINE SAND LAYERS, HIGHLY PLASTIC, A-7-6										WELL GRADED - INDICATES A GOOD REPRESENTATION OF PARTICLE SIZES FROM FINE TO COARSE. UNIFORMLY GRADED - INDICATES THAT SOIL PARTICLES ARE ALL APPROXIMATELY THE SAME SIZE. GAP-GRADED - INDICATES A MIXTURE OF UNIFORM PARTICLE SIZES OF TWO OR MORE SIZES.										HARD ROCK IS NON-COASTAL PLAIN MATERIAL THAT WOULD YIELD SPT REFUSAL IF TESTED, AN INFERRED ROCK LINE INDICATES THE LEVEL AT WHICH NON-COASTAL PLAIN MATERIAL WOULD YIELD SPT REFUSAL IS PENETRATION BY A SPLIT SPOON SAMPLER EQUAL TO OR LESS THAN 0.1 FOOT PER 60 BLOWS IN NON-COASTAL PLAIN MATERIAL. THE TRANSITION BETWEEN SOIL AND ROCK IS OFTEN REPRESENTED BY A ZONE OF WEATHERED ROCK. ROCK MATERIALS ARE TYPICALLY DIVIDED AS FOLLOWS:										ALLUVIUM (ALLUV.) - SOILS THAT HAVE BEEN TRANSPORTED BY WATER. AQUIFER - A WATER BEARING FORMATION OR STRATA. ARENACEOUS - APPLIED TO ROCKS THAT HAVE BEEN DERIVED FROM SAND OR THAT CONTAIN SAND. ARGILLACEOUS - APPLIED TO ALL ROCKS OR SUBSTANCES COMPOSED OF CLAY MINERALS, OR HAVING A NOTABLE PROPORTION OF CLAY IN THEIR COMPOSITION, SUCH AS SHALE, SLATE, ETC. ARTESIAN - GROUND WATER THAT IS UNDER SUFFICIENT PRESSURE TO RISE ABOVE THE LEVEL AT WHICH IT IS ENCOUNTERED, BUT WHICH DOES NOT NECESSARILY RISE TO OR ABOVE THE GROUND SURFACE. CALCAREOUS (CALC.) - SOILS THAT CONTAIN APPRECIABLE AMOUNTS OF CALCIUM CARBONATE. COLLUVIUM - ROCK FRAGMENTS MIXED WITH SOIL DEPOSITED BY GRAVITY ON SLOPE OR AT BOTTOM OF SLOPE. CORE RECOVERY (REC.) - TOTAL LENGTH OF ALL MATERIAL RECOVERED IN THE CORE BARREL DIVIDED BY TOTAL LENGTH OF CORE RUN AND EXPRESSED AS A PERCENTAGE. DIKE - A TABULAR BODY OF IGNEOUS ROCK THAT CUTS ACROSS THE STRUCTURE OF ADJACENT ROCKS OR CUTS MASSIVE ROCK. DIP - THE ANGLE AT WHICH A STRATUM OR ANY PLANAR FEATURE IS INCLINED FROM THE HORIZONTAL. DIP DIRECTION (DIP AZIMUTH) - THE DIRECTION OR BEARING OF THE HORIZONTAL TRACE OF THE LINE OF DIP, MEASURED CLOCKWISE FROM NORTH. FAULT - A FRACTURE OR FRACTURE ZONE ALONG WHICH THERE HAS BEEN DISPLACEMENT OF THE SIDES RELATIVE TO ONE ANOTHER PARALLEL TO THE FRACTURE. FISSILE - A PROPERTY OF SPLITTING ALONG CLOSELY SPACED PARALLEL PLANES. FLOAT - ROCK FRAGMENTS ON SURFACE NEAR THEIR ORIGINAL POSITION AND DISLOADED FROM PARENT MATERIAL. FLOOD PLAIN (FP) - LAND BORDERING A STREAM, BUILT OF SEDIMENTS DEPOSITED BY THE STREAM. FORMATION (FM) - A MAPPABLE GEOLOGIC UNIT THAT CAN BE RECOGNIZED AND TRACED IN THE FIELD. JOINT - FRACTURE IN ROCK ALONG WHICH NO APPRECIABLE MOVEMENT HAS OCCURRED. LEDGE - A SHELF-LIKE RIDGE OR PROJECTION OF ROCK WHOSE THICKNESS IS SMALL COMPARED TO ITS LATERAL EXTENT. LENS - A BODY OF SOIL OR ROCK THAT THINS OUT IN ONE OR MORE DIRECTIONS. MOTTLED (MOT.) - IRREGULARLY MARKED WITH SPOTS OF DIFFERENT COLORS, MOTTLING IN SOILS USUALLY INDICATES POOR AERATION AND LACK OF GOOD DRAINAGE. PERCHED WATER - WATER MAINTAINED ABOVE THE NORMAL GROUND WATER LEVEL BY THE PRESENCE OF AN INTERVENING IMPERVIOUS STRATUM. RESIDUAL (RES.) SOIL - SOIL FORMED IN PLACE BY THE WEATHERING OF ROCK. ROCK QUALITY DESIGNATION (RQD) - A MEASURE OF ROCK QUALITY DESCRIBED BY TOTAL LENGTH OF ROCK SEGMENTS EQUAL TO OR GREATER THAN 4 INCHES DIVIDED BY THE TOTAL LENGTH OF CORE RUN AND EXPRESSED AS A PERCENTAGE. SAPROLITE (SAP.) - RESIDUAL SOIL THAT RETAINS THE RELIC STRUCTURE OR FABRIC OF THE PARENT ROCK. SILL - AN INTRUSIVE BODY OF IGNEOUS ROCK OF APPROXIMATELY UNIFORM THICKNESS AND RELATIVELY THIN COMPARED WITH ITS LATERAL EXTENT, THAT HAS BEEN EMPLACED PARALLEL TO THE BEDDING OR SCHISTOSITY OF THE INTRUDED ROCKS. SLICKENSIDE - POLISHED AND STRIATED SURFACE THAT RESULTS FROM FRICTION ALONG A FAULT OR SLIP PLANE. STANDARD PENETRATION TEST (PENETRATION RESISTANCE) (SPT) - NUMBER OF BLOWS (N OR BPF) OF A 140 LB. HAMMER FALLING 30 INCHES REQUIRED TO PRODUCE A PENETRATION OF 1 FOOT INTO SOIL WITH A 2 INCH OUTSIDE DIAMETER SPLIT SPOON SAMPLER. SPT REFUSAL IS PENETRATION EQUAL TO OR LESS THAN 0.1 FOOT PER 60 BLOWS. STRATA CORE RECOVERY (SREC.) - TOTAL LENGTH OF STRATA MATERIAL RECOVERED DIVIDED BY TOTAL LENGTH OF STRATUM AND EXPRESSED AS A PERCENTAGE. STRATA ROCK QUALITY DESIGNATION (SROD) - A MEASURE OF ROCK QUALITY DESCRIBED BY TOTAL LENGTH OF ROCK SEGMENTS WITHIN A STRATUM EQUAL TO OR GREATER THAN 4 INCHES DIVIDED BY THE TOTAL LENGTH OF STRATA AND EXPRESSED AS A PERCENTAGE. TOPSOIL (TS.) - SURFACE SOILS USUALLY CONTAINING ORGANIC MATTER.									
SOIL LEGEND AND AASHTO CLASSIFICATION										ANGULARITY OF GRAINS										WEATHERED ROCK (WR)										CRYSTALLINE ROCK (CR)									
MINERALOGICAL COMPOSITION										NON-CRYSTALLINE ROCK (NCR)										COASTAL PLAIN SEDIMENTARY ROCK (CP)										WEATHERING									
COMPRESSION										PERCENTAGE OF MATERIAL										GROUND WATER										MISCELLANEOUS SYMBOLS									
TEXTURE OR GRAIN SIZE										RECOMMENDATION SYMBOLS										ROCK HARDNESS										SOIL MOISTURE - CORRELATION OF TERMS									
CONSISTENCY OR DENSENESS										ABBREVIATIONS										SOIL MOISTURE SCALE (ATTERBERG LIMITS)										PLASTICITY									
PLASTICITY										EQUIPMENT USED ON SUBJECT PROJECT										FRACTURE SPACING										BEDDING									
COLOR										INDURATION										NOTES:										FRACURE SPACING									
DESCRIPTIONS MAY INCLUDE COLOR OR COLOR COMBINATIONS (TAN, RED, YELLOW-BROWN, BLUE-BROWN). MODIFIERS SUCH AS LIGHT, DARK, STREAKED, ETC. ARE USED TO DESCRIBE APPEARANCE.																																							



SKEW = 90°

20+00

23+00

TO NC 903

TO NC 11

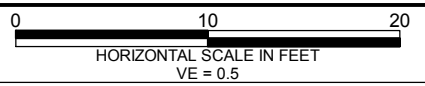
NC II/NC III 35.5' BST

BST OVER CONC BRIDGE #82

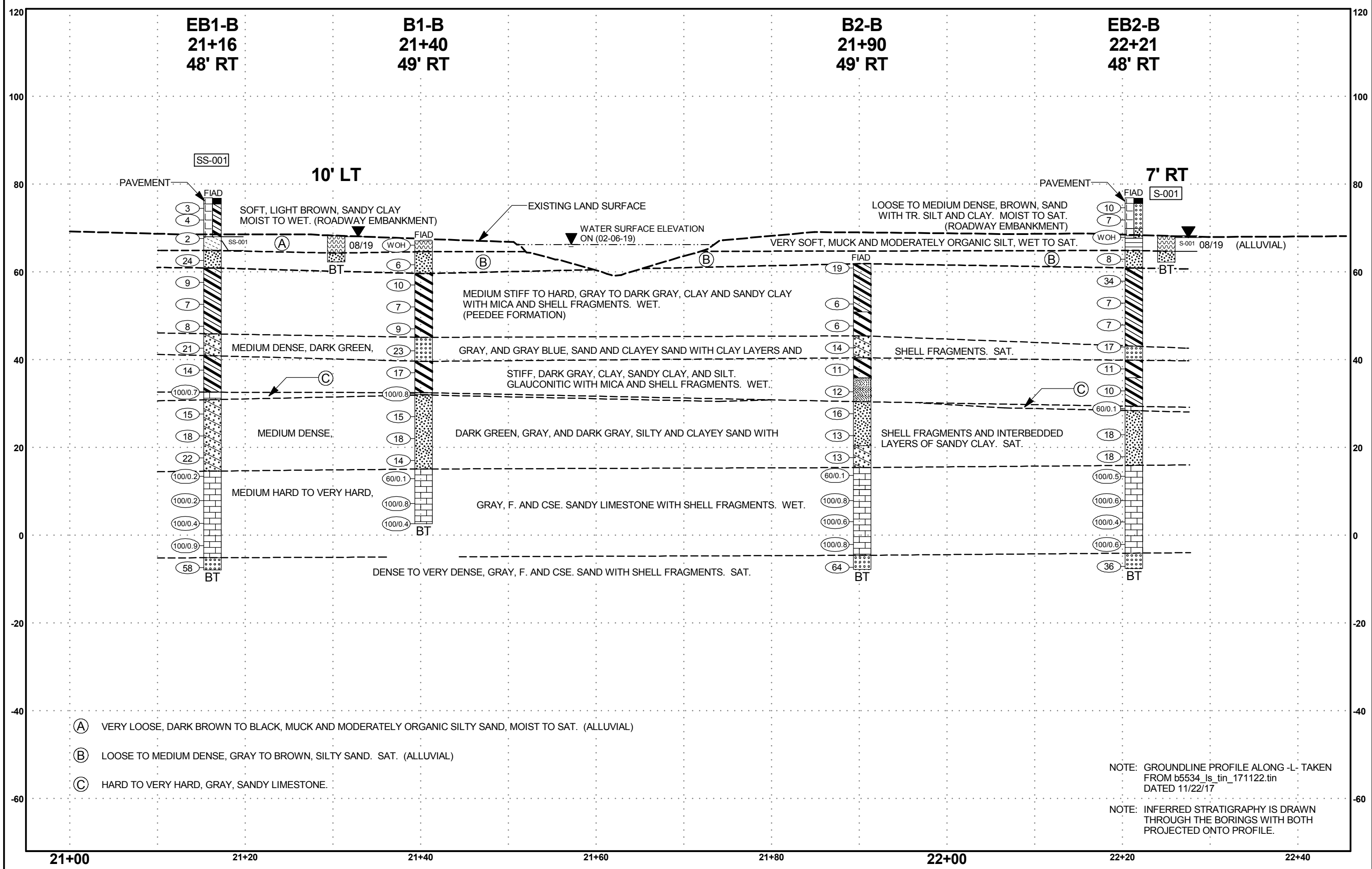
FSS EXISTING R/W

WOODS

WOODS



PROFILE THROUGH BORINGS PROJECTED ALONG -L-



GEOTECHNICAL BORING REPORT BORE LOG



WBS: 55034.1.1	TIP: B-5534	COUNTY: DUPLIN	GEOLOGIST: L. PUGH
SITE DESCRIPTION: BRIDGE NO. 82 ON -L- (NC 11/111) OVER BURNT COAT CREEK AT -L- STA. 21+68.5			GROUND WTR (ft)
BORING NO.: L-2130	STATION: 21+30	OFFSET: 10 ft LT	ALIGNMENT: -L-
COLLAR ELEV.: 68.3 ft	TOTAL DEPTH: 6.0 ft	NORTHING: 478,047	EASTING: 2,352,418
		0 HR.	N/A
		24 HR.	0.3

DRILL RIG/HAMMER EFF./DATE: Hand Auger	DRILL METHOD: Hand Auger	HAMMER TYPE: N/A
DRILLER: N/A	START DATE: 08/15/19	COMP. DATE: 08/15/19
SURFACE WATER DEPTH: N/A		

ELEV (ft)	DRIVE ELEV (ft)	DEPTH (ft)	BLOW COUNT			BLOWS PER FOOT					SAMP. # RESULT	MOI	LOG	SOIL AND ROCK DESCRIPTION	DEPTH (ft)		
			0.5ft	0.5ft	0.5ft	0	25	50	75	100							
70															68.3	GROUND SURFACE	0.0
																ALLUVIAL DARK BROWN, MODERATELY ORGANIC SILTY SAND	4.0
65															62.3	GRAY BROWN, SILTY SAND	6.0
BORING TERMINATED AT ELEVATION 62.3 ft IN VERY LOOSE SILTY SAND. (ALLUVIAL)																	

WBS: 55034.1.1	TIP: B-5534	COUNTY: DUPLIN	GEOLOGIST: L. PUGH
SITE DESCRIPTION: BRIDGE NO. 82 ON -L- (NC 11/111) OVER BURNT COAT CREEK AT -L- STA. 21+68.5			GROUND WTR (ft)
BORING NO.: L-2225	STATION: 22+25	OFFSET: 7 ft RT	ALIGNMENT: -L-
COLLAR ELEV.: 68.2 ft	TOTAL DEPTH: 6.0 ft	NORTHING: 478,026	EASTING: 2,352,512
		0 HR.	N/A
		24 HR.	0.4

DRILL RIG/HAMMER EFF./DATE: Hand Auger	DRILL METHOD: Hand Auger	HAMMER TYPE: N/A
DRILLER: N/A	START DATE: 08/15/19	COMP. DATE: 08/15/19
SURFACE WATER DEPTH: N/A		

ELEV (ft)	DRIVE ELEV (ft)	DEPTH (ft)	BLOW COUNT			BLOWS PER FOOT					SAMP. # RESULT	MOI	LOG	SOIL AND ROCK DESCRIPTION	DEPTH (ft)		
			0.5ft	0.5ft	0.5ft	0	25	50	75	100							
70															68.2	GROUND SURFACE	0.0
											S-001 A-4(0)					ALLUVIAL MUCK. HIGHLY ORGANIC (30.9%) SILT	3.5
65															62.2	GRAY BROWN, SILTY SAND	6.0
BORING TERMINATED AT ELEVATION 62.2 ft IN VERY LOOSE SILTY SAND. (ALLUVIAL)																	

NCDOT BORE DOUBLE: B5534_GEO_BRDG_BURNTCREEK_CATLIN.GPJ NCDOTI_CATLIN.GDT 08/11/19

LABORATORY SUMMARY SHEET

AASHTO Standard Specifications

(As modified by NCDOT, Material and Tests Unit, 2000.)

TEST RESULTS

Proj. Sample Number	SS-001	S-001																
Lab Sample Number	SS-001	S-001																
Retained #4 Sieve %	1.1	10.1																
Passing #10 Sieve %	98.6	89.2																
Passing #40 Sieve %	96	91																
Passing #200 Sieve %	32	78																
MINUS NUMBER 10 FRACTION																		
SOIL MORTAR - 100%																		
Coarse Sand Ret.-#60 %	9.0	12.3																
Fine Sand Ret.-#270 %	63.4	11.3																
Silt 0.05 - 0.005mm %	13.6	55.7																
Clay <0.005mm %	14.1	20.7																
Liquid Limit (LL)	NP	NP																
Plasticity Index (PI)	NP	NP																
AASHTO Classification /Group Index	A-2-4(0)	A-4(0)																
Organic Content %	9.4	30.9																
Station	21+16	22+25																
Offset	48ft RT	7ft RT																
Alignment	-L-	-L-																
Boring Identification	EB1-B	L-2225																
Depth (FT)	8.9	0.0																
to	9.8	3.5																
Field Moist. Content %																		
Tested By	MDM	MDM																
Submitted By	LGP	LGP																
Date Submitted	08/16/19	08/16/19																

NP = Non-Plastic
NEM = Not Enough Material for Analysis
N/A = Not Applicable / Not Analyzed

Michael D. Mason
Laboratory Manager

Report Date: 8/26/2019
Laboratory Report Page 1 of 1

BRIDGE NO. 82 ON NC 11/111 OVER BURNT COAT CREEK



BURNT COAT CREEK FACING SOUTH
(DOWNSTREAM)