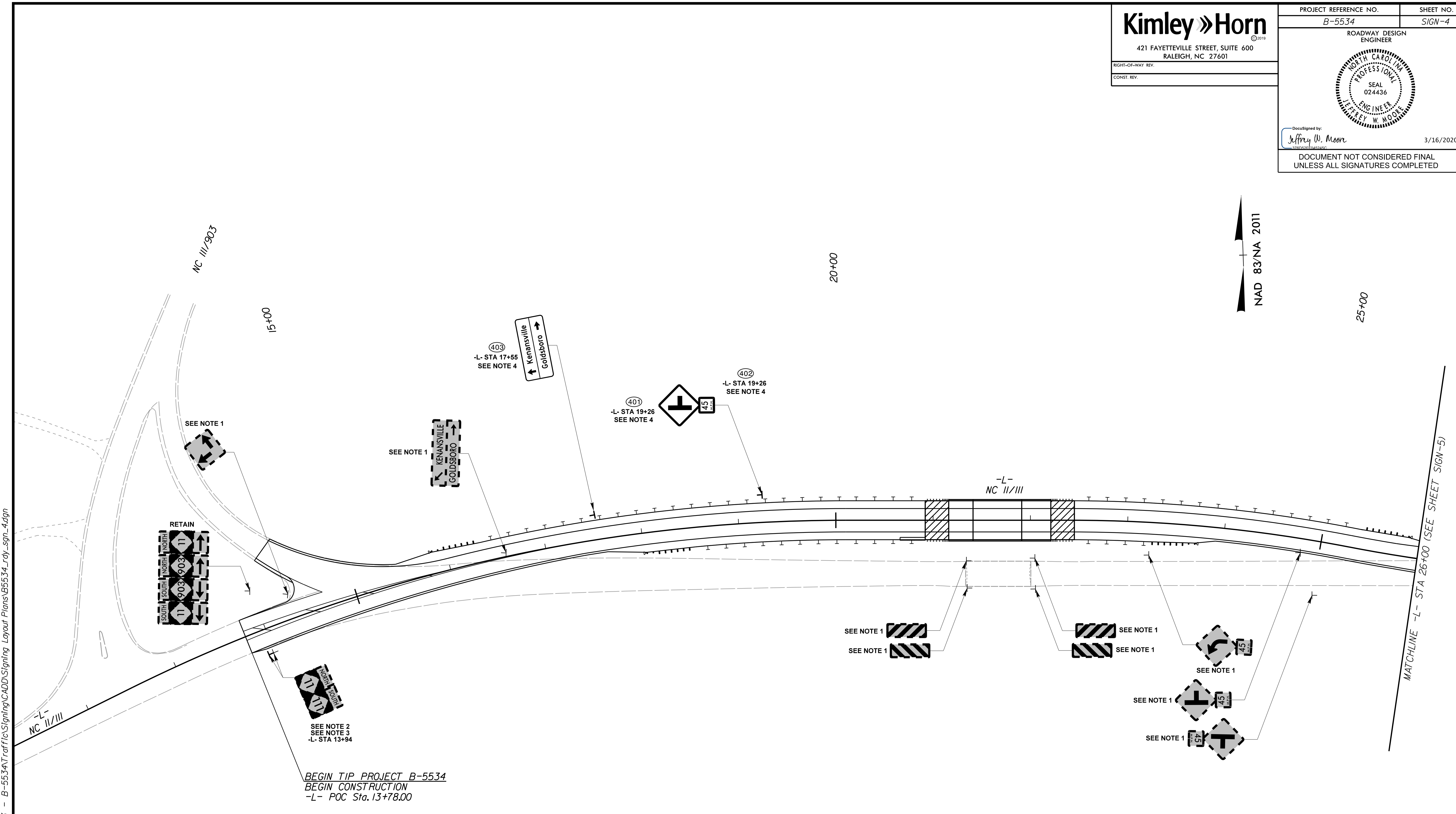


Kimley » Horn
 421 FAYETTEVILLE STREET, SUITE 600
 RALEIGH, NC 27601

PROJECT REFERENCE NO. B-5534	SHEET NO. SIGN-4
ROADWAY DESIGN ENGINEER	
DocuSigned by: Jeffrey W. Moore 3/16/2020	3/16/2020
DOCUMENT NOT CONSIDERED FINAL UNLESS ALL SIGNATURES COMPLETED	



K:\RAL_Roadway\01036483 - B-5534\Tran\Fis\Signing\CADD\Signing Layout Plans\B5534_rdy_sgn_4.dgn
3/13/2020

SIGNING LEGEND

- DENOTES EXISTING SIGN
- DENOTES NEW "U" CHANNEL POST/PROPOSED SIGN LOCATION
- DENOTES EXISTING "U" CHANNEL POST/EXISTING SIGN LOCATION

SIGNING NOTES

1. DISPOSE OF SIGN SYSTEM, U-CHANNEL
2. SIGN ERECTION, RELOCATE SIGN TYPE F (GROUND MOUNTED)
3. DISPOSAL OF SUPPORT, U-CHANNEL
4. SIGN ERECTION, TYPE D, E, AND F

SEE SHEET 4 FOR ROADWAY PLANS