

6/2/09

SURVEY CONTROL SHEET B-5534

W/ EXISTING CENTERLINE ALIGNMENTS PRIOR TO CONSTRUCTION

PROJECT REFERENCE NO.	SHEET NO.
B-5534	RW02C-1
Location and Surveys	
5310 BARBADOS BLVD., SUITE 102 CASTLE HAYNE, NC 28429	

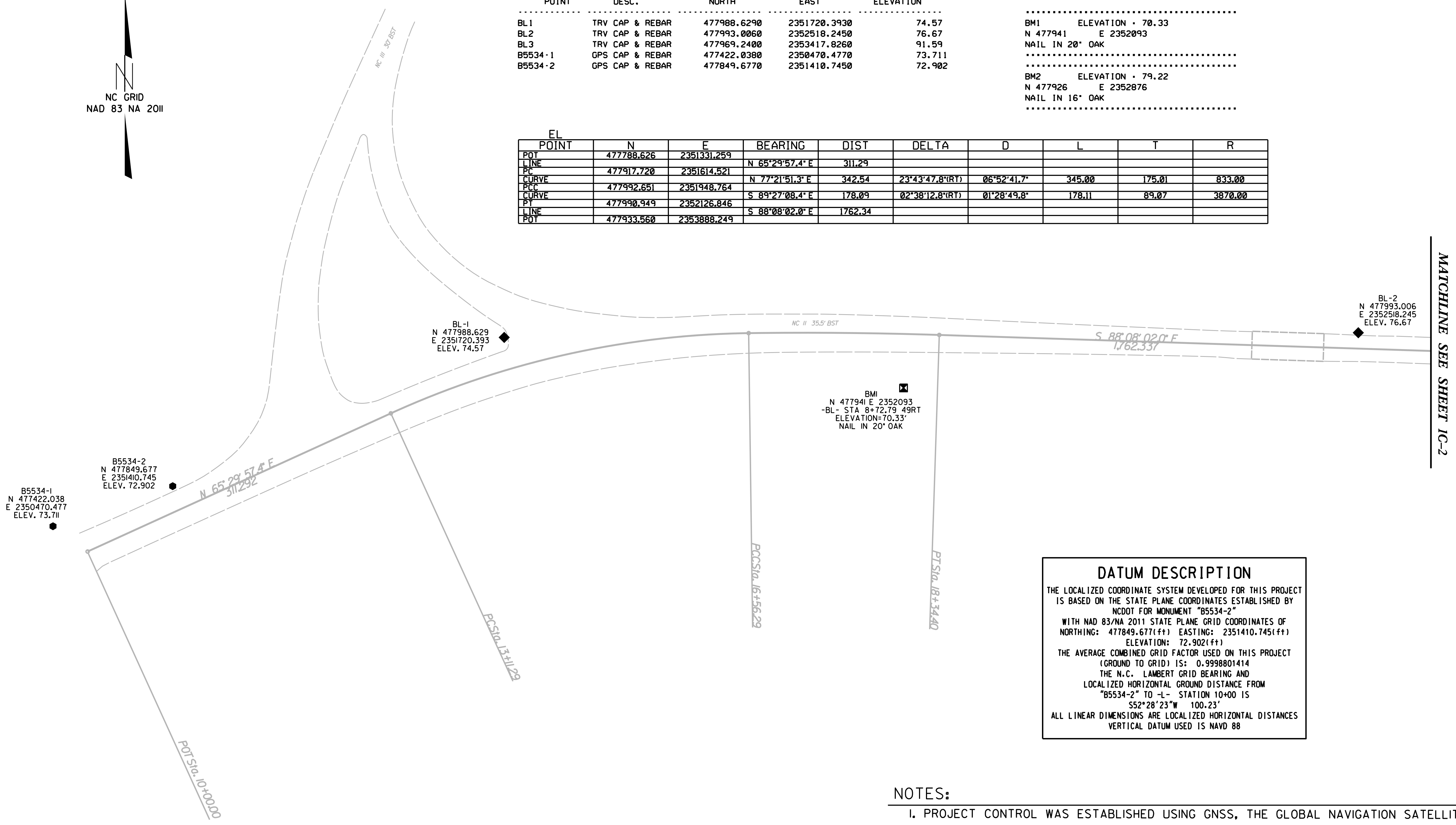


BL	POINT	DESC.	NORTH	EAST	ELEVATION
BL1	TRV CAP & REBAR	477988.6290	2351720.3930	74.57	
BL2	TRV CAP & REBAR	477993.0060	2352518.2450	76.67	
BL3	TRV CAP & REBAR	477969.2400	2353417.8260	91.59	
B5534-1	GPS CAP & REBAR	477422.0380	2350470.4770	73.711	
B5534-2	GPS CAP & REBAR	477849.6770	2351410.7450	72.902	

.....
 BM1 ELEVATION = 70.33
 N 477941 E 2352093
 NAIL IN 20' OAK

 BM2 ELEVATION = 79.22
 N 477926 E 2352876
 NAIL IN 16' OAK

EL	POINT	N	E	BEARING	DIST	DELTA	D	L	T	R
POT	LINE	477788.626	2351331.259							
PC	LINE	477917.720	2351614.521	N 65°29'57.4" E	311.29					
CURVE				N 77°21'51.3" E	342.54	23°43'47.8" (RT)	06°52'41.7"	345.00	175.01	833.00
PCC		477992.651	2351948.764							
CURVE				S 89°27'08.4" E	178.09	02°38'12.8" (RT)	01°28'49.8"	178.11	89.07	3870.00
PT		477990.949	2352126.846							
LINE				S 88°08'02.0" E	1762.34					
POT		477933.560	2353888.249							



MATCHLINE SEE SHEET IC-2

DATUM DESCRIPTION

THE LOCALIZED COORDINATE SYSTEM DEVELOPED FOR THIS PROJECT IS BASED ON THE STATE PLANE COORDINATES ESTABLISHED BY NCDOT FOR MONUMENT "B5534-2"

WITH NAD 83/NA 2011 STATE PLANE GRID COORDINATES OF
 NORTHING: 477849.677(ft) EASTING: 2351410.745(ft)
 ELEVATION: 72.902(ft)

THE AVERAGE COMBINED GRID FACTOR USED ON THIS PROJECT (GROUND TO GRID) IS: 0.9998801414

THE N.C. LAMBERT GRID BEARING AND LOCALIZED HORIZONTAL GROUND DISTANCE FROM "B5534-2" TO -L- STATION 10+00 IS
 S52°28'23"W 100.23'

ALL LINEAR DIMENSIONS ARE LOCALIZED HORIZONTAL DISTANCES
 VERTICAL DATUM USED IS NAVD 88

- NOTES:**
- PROJECT CONTROL WAS ESTABLISHED USING GNSS, THE GLOBAL NAVIGATION SATELLITE SYSTEM.
 - THE SURVEY CONTROL DATA FOR THIS PROJECT HAS BEEN COMPILED FROM VARIOUS SOURCES. IF FURTHER INFORMATION REGARDING PROJECT CONTROL IS NEEDED, PLEASE CONTACT THE LOCATION AND SURVEYS UNIT.

REVISIONS

16-DEC-2018 10:37 H:\Dun\In\B5534_0082\Final\Control_Sheets\B5534_1s_rw02c-1_191216.dgn C:\isowier AT LS-299904