

5/14/99



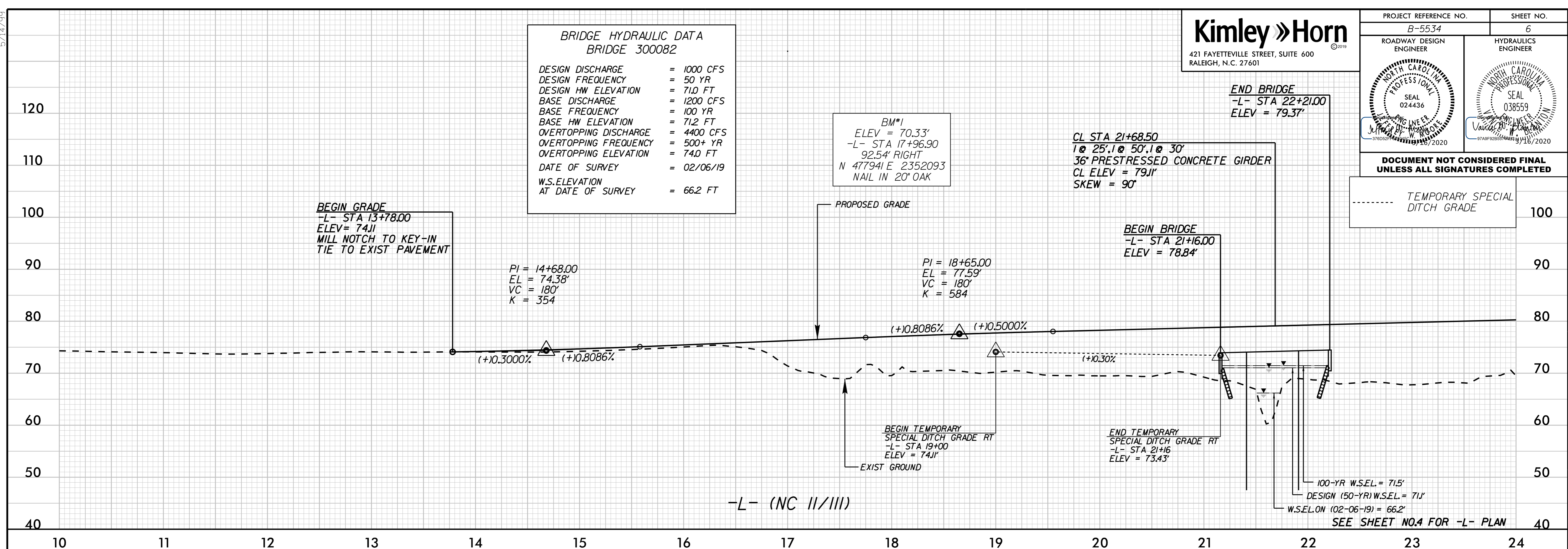
421 FAYETTEVILLE STREET, SUITE 600
RALEIGH, N.C. 27601

PROJECT REFERENCE NO. B-5534	SHEET NO. 6
ROADWAY DESIGN ENGINEER	HYDRAULICS ENGINEER

DOCUMENT NOT CONSIDERED FINAL
UNLESS ALL SIGNATURES COMPLETED

**BRIDGE HYDRAULIC DATA
BRIDGE 300082**

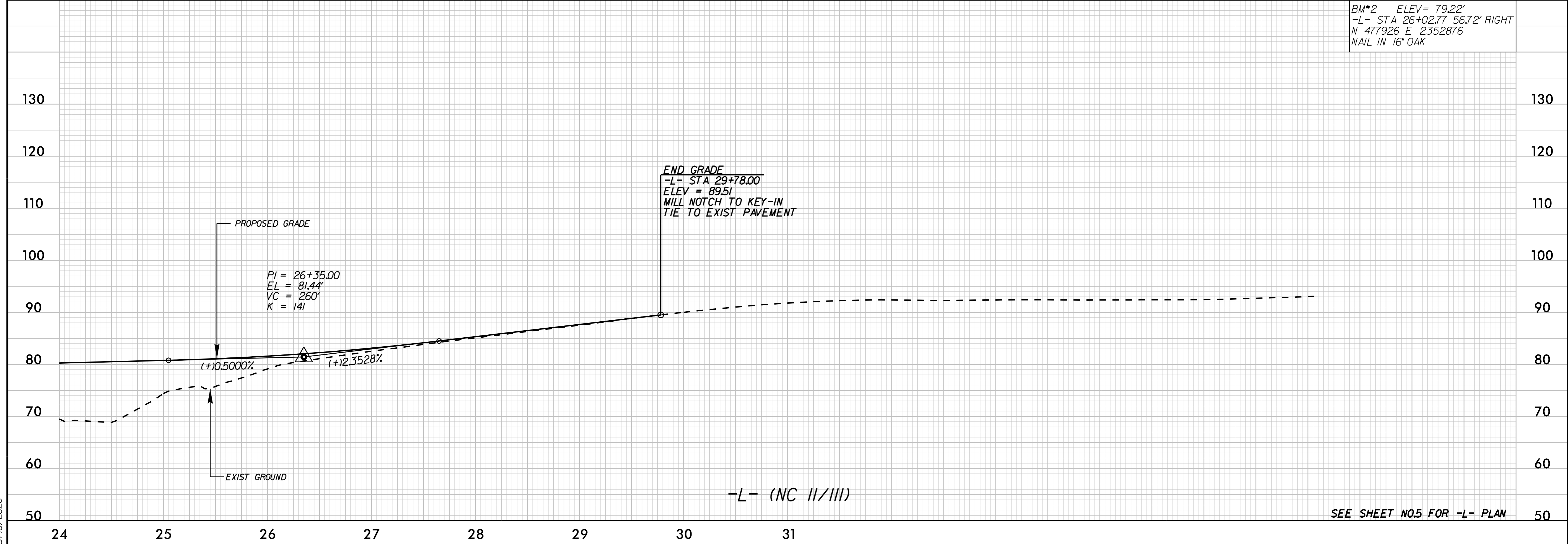
DESIGN DISCHARGE = 1000 CFS
DESIGN FREQUENCY = 50 YR
DESIGN HW ELEVATION = 71.0 FT
BASE DISCHARGE = 1200 CFS
BASE FREQUENCY = 100 YR
BASE HW ELEVATION = 71.2 FT
OVERTOPPING DISCHARGE = 4400 CFS
OVERTOPPING FREQUENCY = 500+ YR
OVERTOPPING ELEVATION = 74.0 FT
DATE OF SURVEY = 02/06/19
W.S. ELEVATION AT DATE OF SURVEY = 66.2 FT



TEMPORARY SPECIAL DITCH GRADE

100-YR W.S.E.L. = 71.5'
DESIGN (50-YR) W.S.E.L. = 71.1'
W.S.E.L. ON (02-06-19) = 66.2'
SEE SHEET NO.4 FOR -L- PLAN

BM*2 ELEV = 79.22'
-L- STA 26+02.77 56.72' RIGHT
N 477926 E 2352876
NAIL IN 16\"/>



3/16/2020