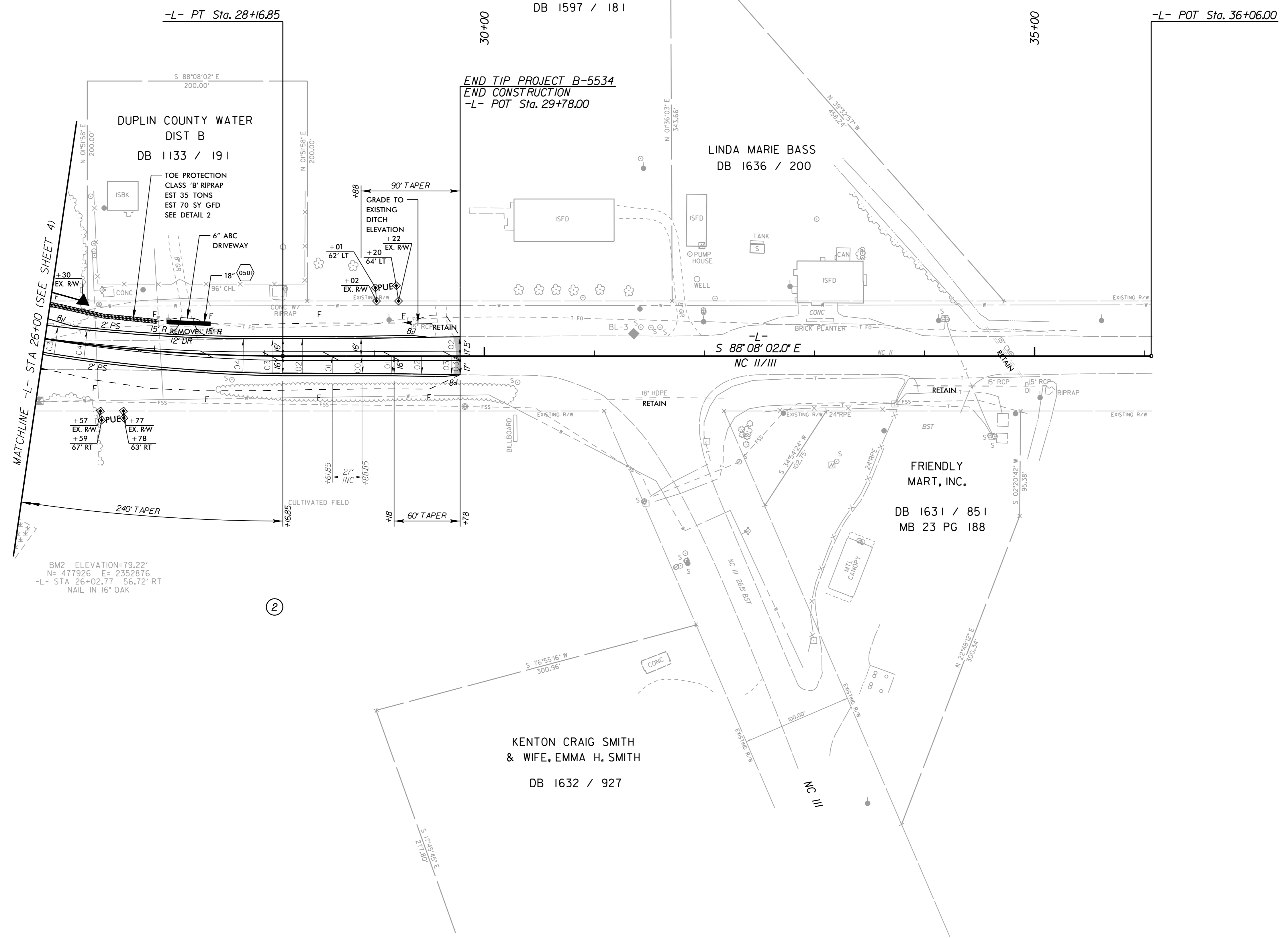


5/14/1999

PROJECT REFERENCE NO. B-5534	SHEET NO. 5
RW SHEET NO.	
ROADWAY DESIGN ENGINEER	HYDRAULICS ENGINEER
DOCUMENT NOT CONSIDERED FINAL UNLESS ALL SIGNATURES COMPLETED	

-L-
 PI Sta 26+73.45
 $\Delta = 10^{\circ} 59' 17.3''$ (LT)
 $D = 3^{\circ} 49' 11.0''$
 $L = 287.67'$
 $T = 144.28'$
 $R = 1,500.00'$
 $SE = 0.04$
 $RO = 108'$



SEE SHEET 6 FOR -L- PROFILE

3/16/2020