

GEOTECHNICAL ENGINEER

ENGINEER

SEAL 029147
KRISTEN H. HILL

DocuSigned by:
Kristen H. Hill

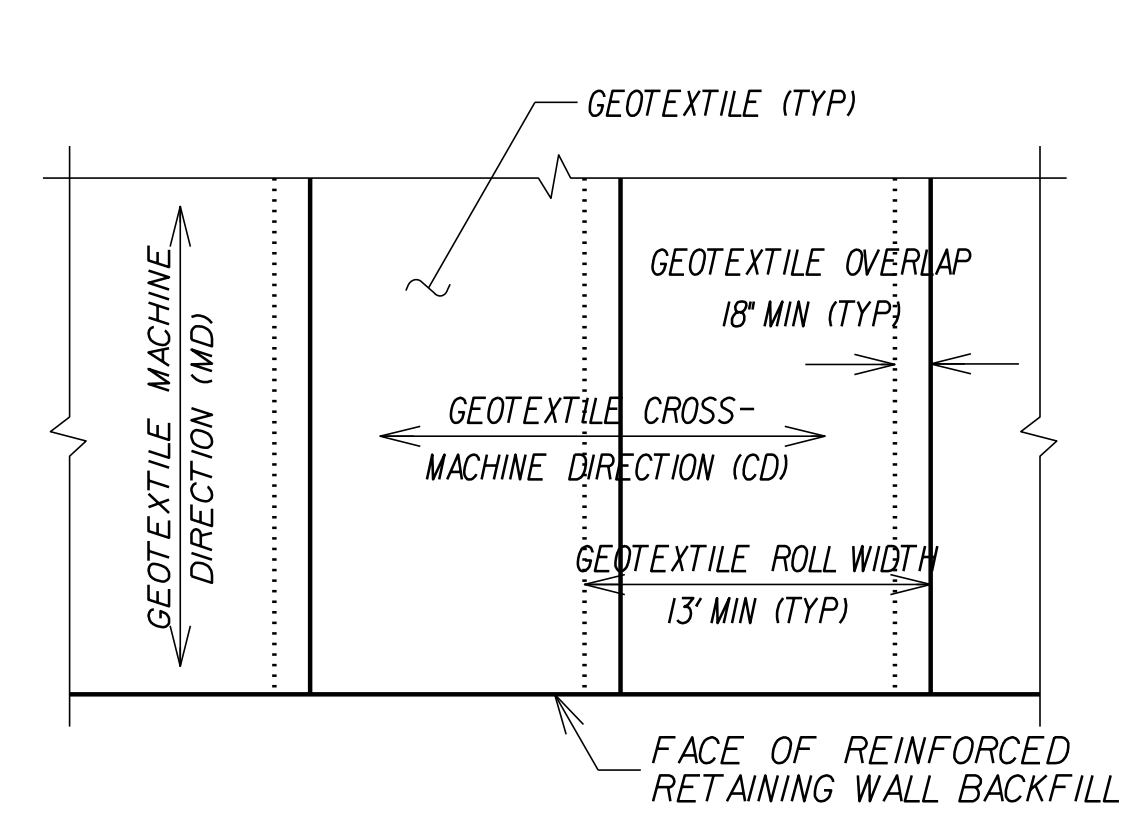
3/11/2020

DATE

SIGNATURE

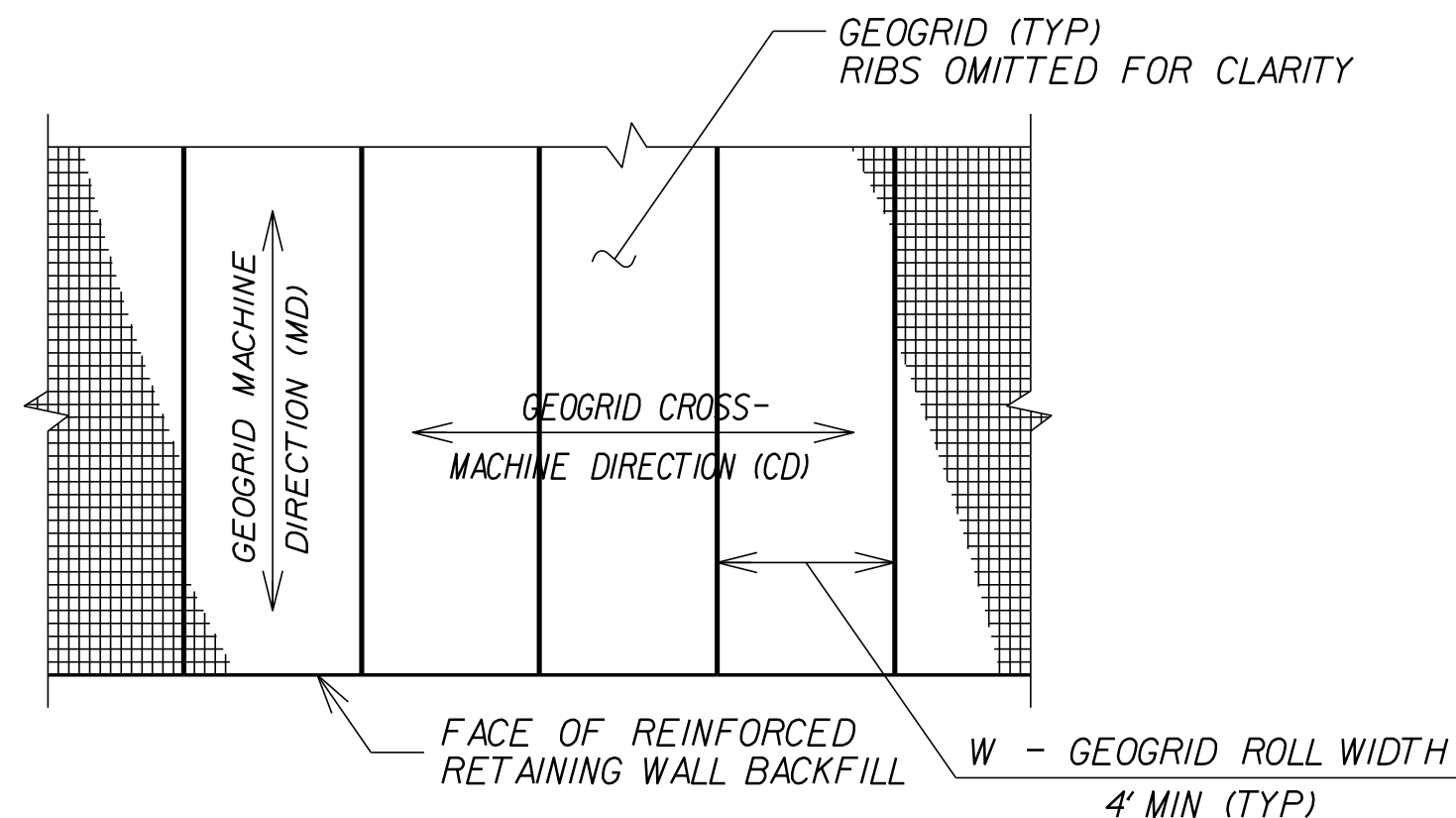
DATE

**DOCUMENT NOT CONSIDERED FINAL
UNLESS ALL SIGNATURES COMPLETED**



GEOTEXTILE PLACEMENT (PLAN VIEW)

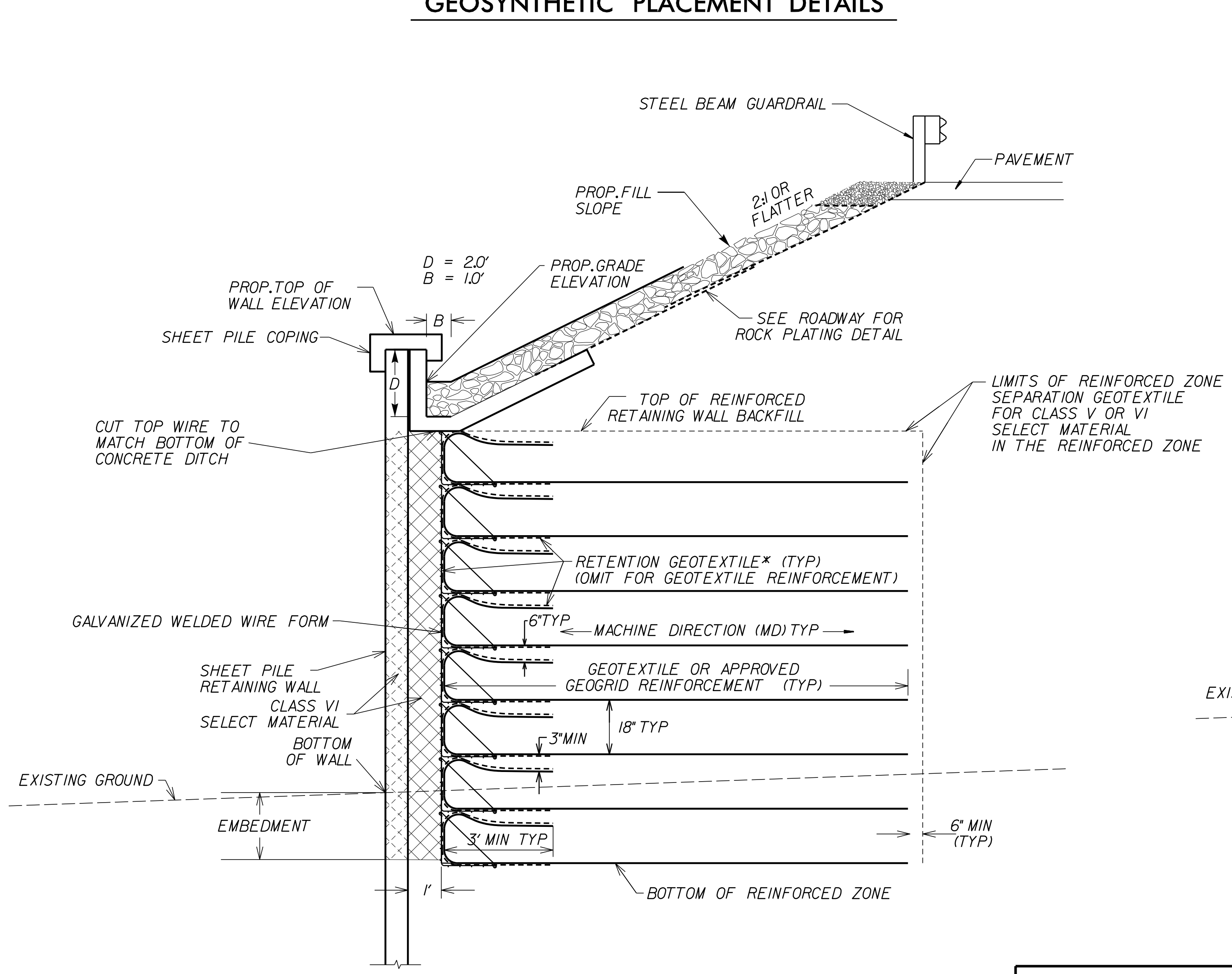
(100% COVERAGE MIN FOR
GEOTEXTILE REINFORCEMENT)



GEOGRID PLACEMENT

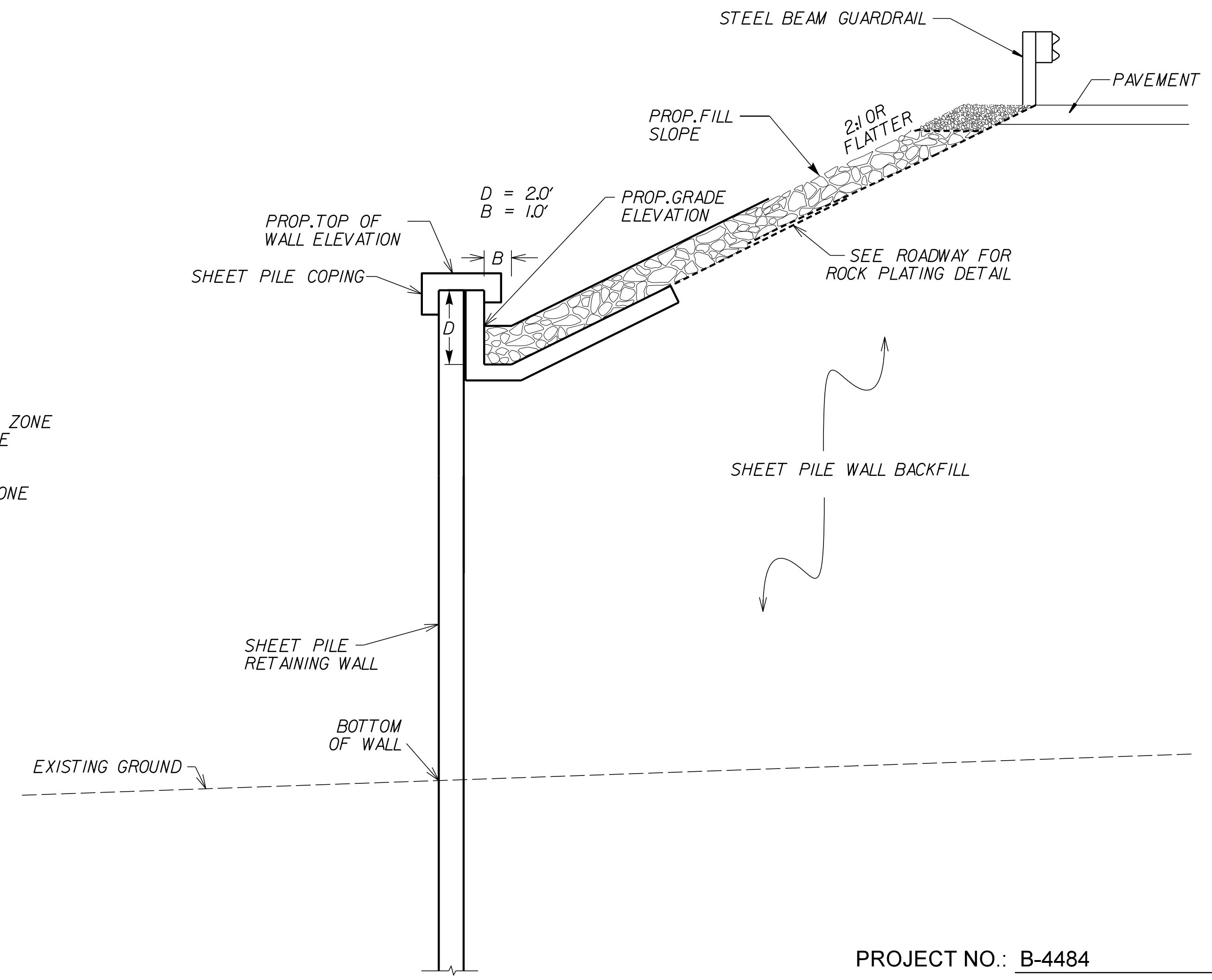
(100% COVERAGE MIN FOR
GEOGRID REINFORCEMENT)

GEOSYNTHETIC PLACEMENT DETAILS



TYPICAL SECTION AT RETAINING WALLS A-A'

*SEE GEOSYNTHETIC PLACEMENT DETAILS AND REINFORCEMENT TABLES ON SHEET W-3.
FROM -L1- STA. 19+50 TO -L1- STA. 22+00
FROM -L1- STA. 28+10 TO -L1- STA. 31+00



TYPICAL SECTION AT RETAINING WALL B-B'
FROM -L1- STA. 31+00 TO -L1- STA. 33+35

PROJECT NO.: B-4484
CRAVEN COUNTY
STATION: -L1- STA. 19+50.00 /
-L1- STA. 28+10.00

PREPARED BY: K. HILL	DATE: 02/4/2020
REVIEWED BY: S. LANEY	DATE: 02/4/2020

9751 SOUTHERN PINE BLVD
CHARLOTTE, NC 28273
(704) 523-4726

NORTH CAROLINA
DEPARTMENT OF TRANSPORTATION
DIVISION OF HIGHWAYS

**GEOTECHNICAL
ENGINEERING UNIT**

**SHEET PILE RETAINING WALL
TYPICAL SECTIONS**

REVISIONS					
NO.	BY	DATE	NO.	BY	DATE
1			3		
2			4		

SHEET NO. W-4