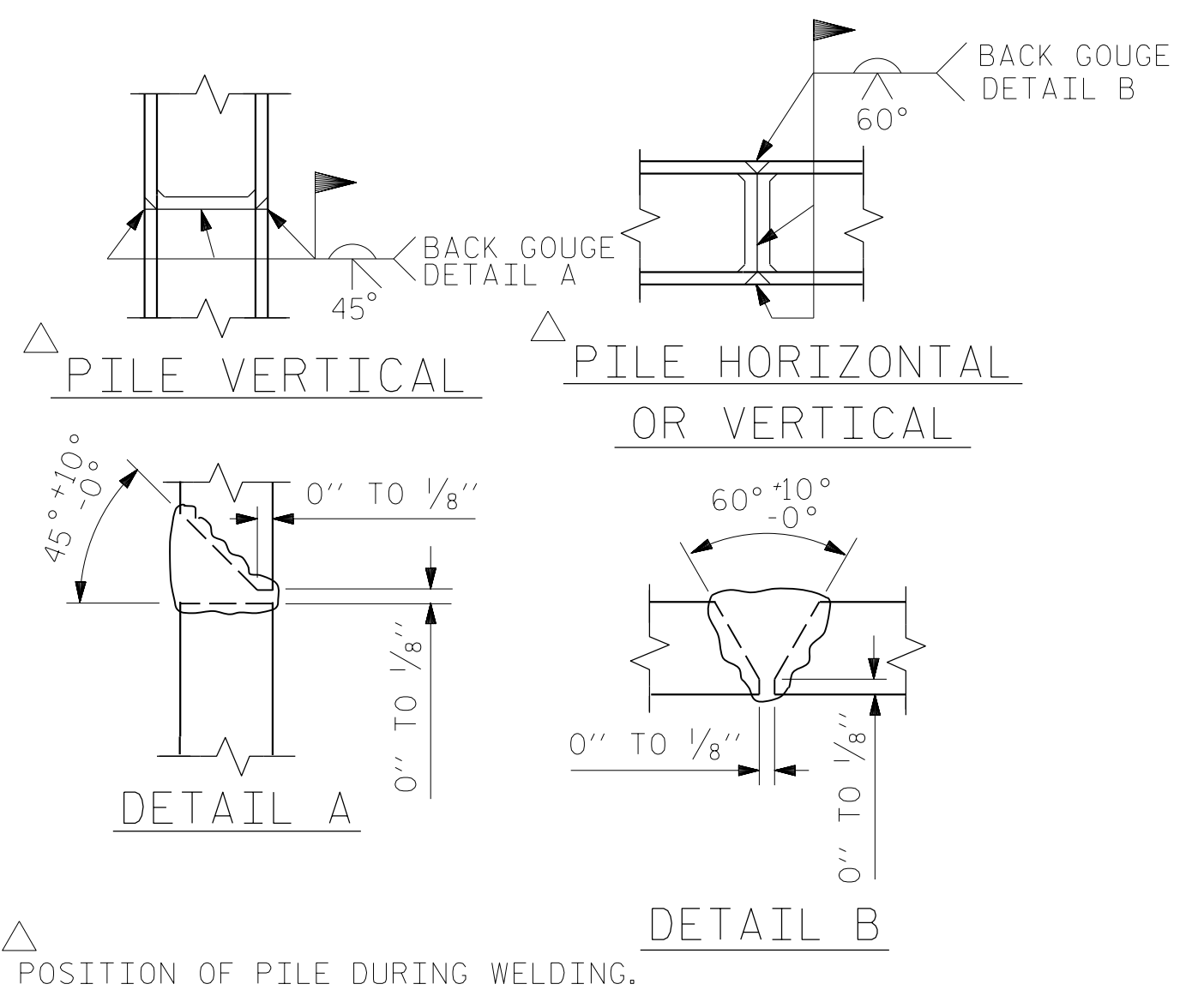


BAGGED STONE AND PIPE SHALL BE PLACED IMMEDIATELY AFTER COMPLETION OF END BENT EXCAVATION. PIPE MAY BE EITHER CONCRETE, CORRUGATED STEEL, CORRUGATED ALUMINUM ALLOY, OR CORRUGATED PLASTIC. PERFORATED PIPE WILL NOT BE ALLOWED.

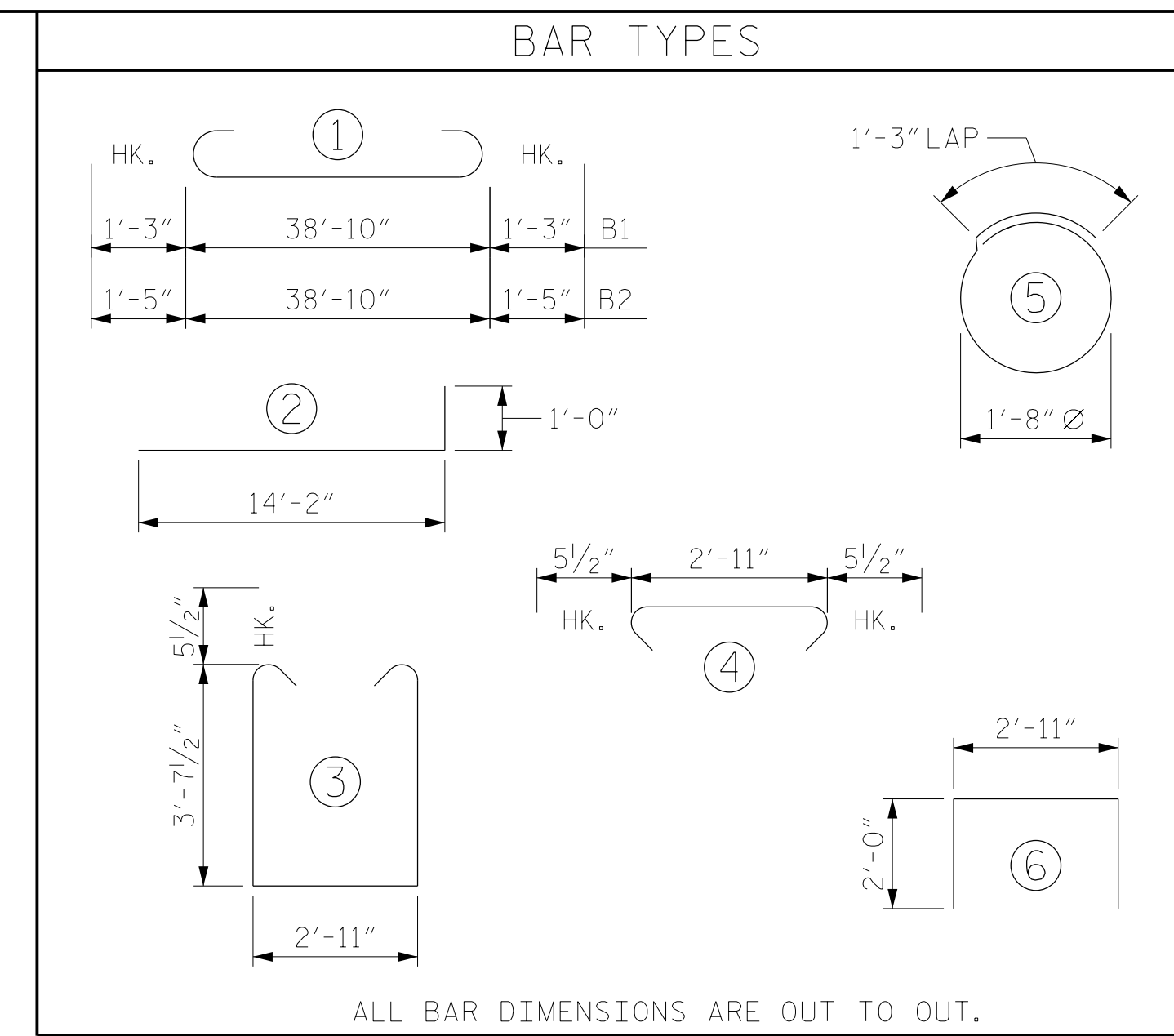
BAGGED STONE SHALL REMAIN IN PLACE UNTIL THE ENGINEER DIRECTS THAT IT BE REMOVED. THE CONTRACTOR SHALL REMOVE AND DISPOSE OF SILT ACCUMULATIONS AT BAGGED STONE WHEN SO DIRECTED BY THE ENGINEER. BAGS SHALL BE REMOVED AND REPLACED WHENEVER THE ENGINEER DETERMINES THAT THEY HAVE DETERIORATED AND LOST THEIR EFFECTIVENESS.

NO SEPARATE PAYMENT WILL BE MADE FOR THIS WORK AND THE ENTIRE COST OF THIS WORK SHALL BE INCLUDED IN THE UNIT CONTRACT PRICE BID FOR THE SEVERAL PAY ITEMS.

TEMPORARY DRAINAGE AT END BENT

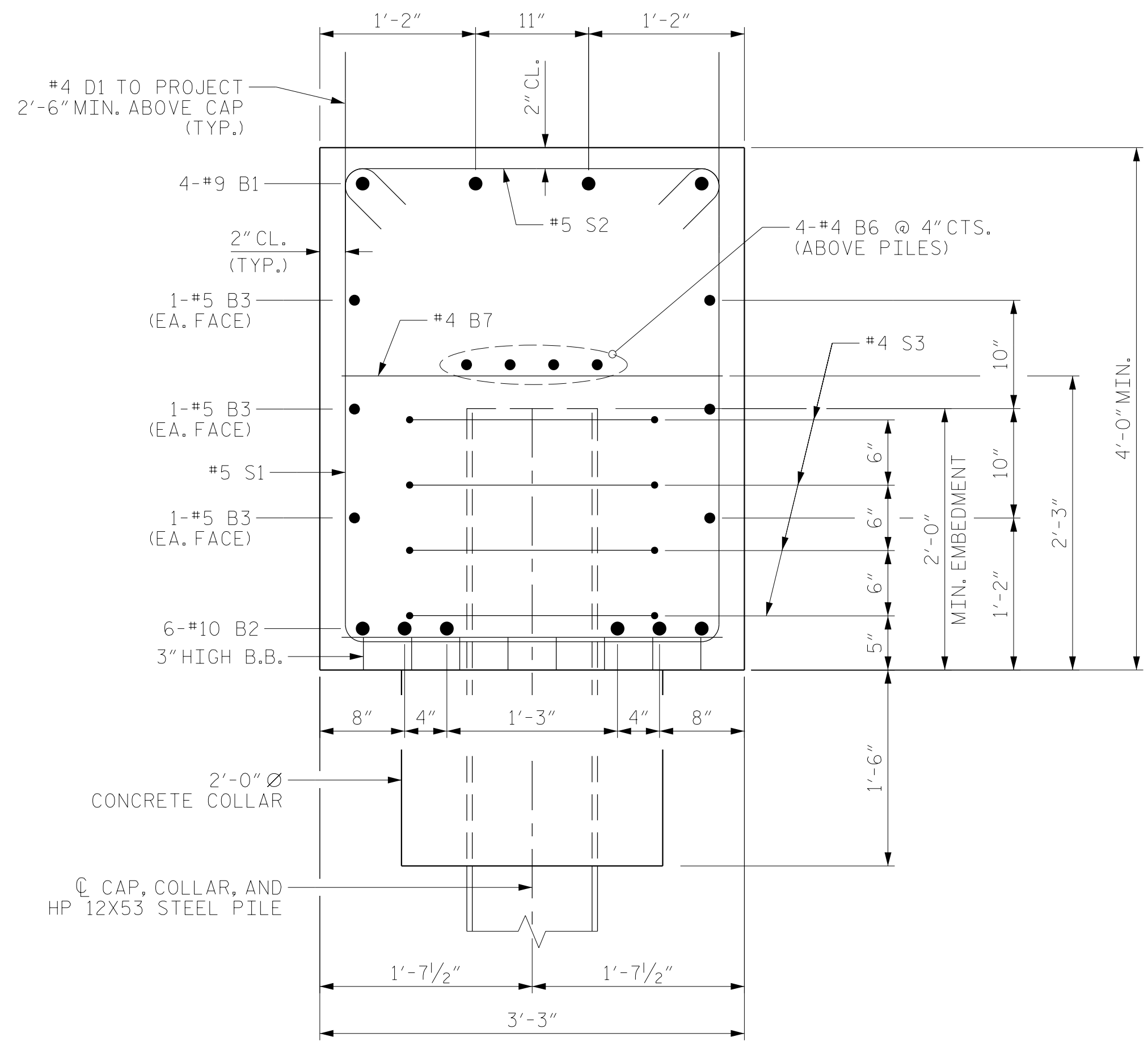


PILE SPLICE DETAILS



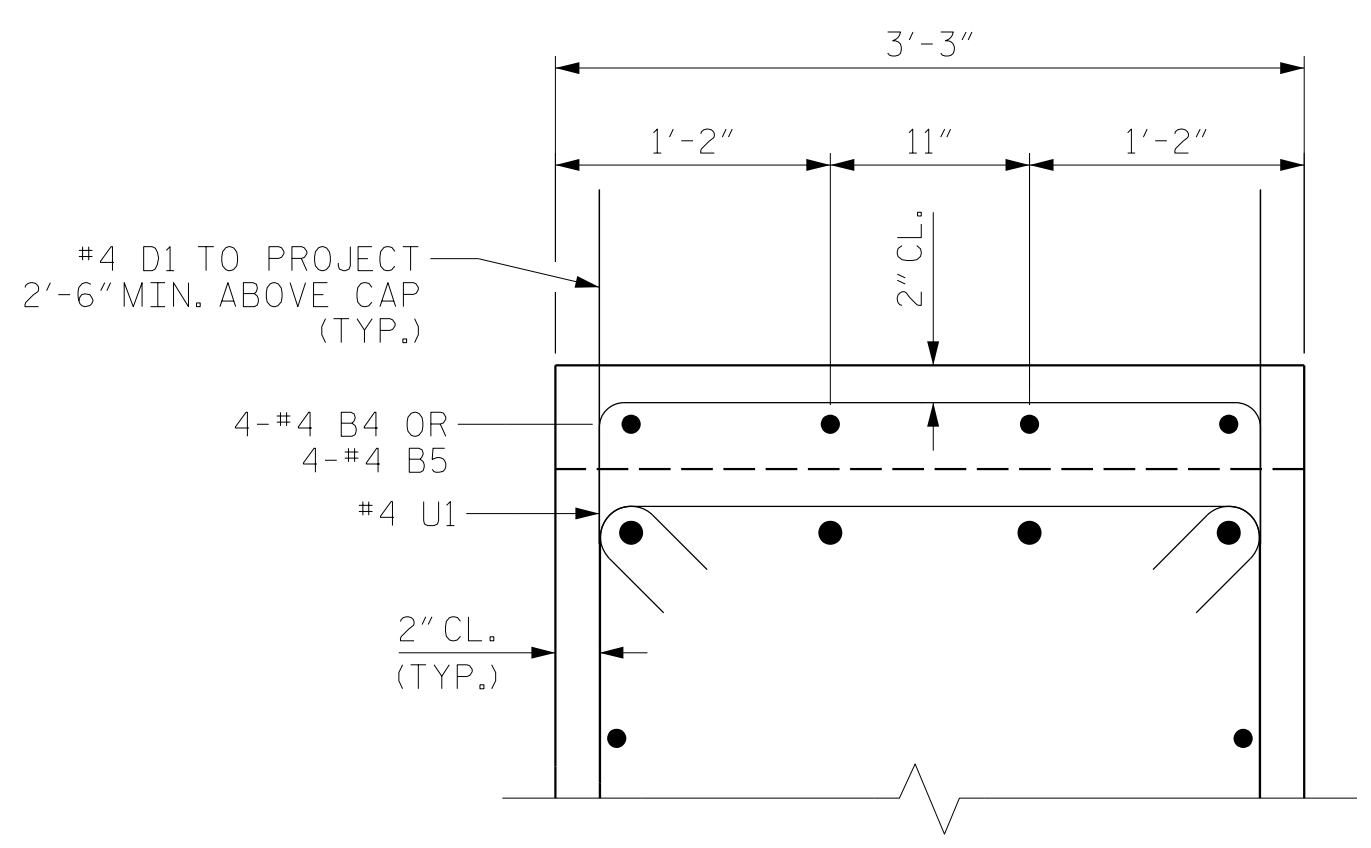
BILL OF MATERIAL					
END BENT NO. 2					
BAR	NO.	SIZE	TYPE	LENGTH	WEIGHT
B1	4	#9	1	41'-4"	562
B2	6	#10	1	41'-8"	1076
B3	6	#5	STR	38'-9"	242
B4	4	#4	STR	8'-6"	23
B5	4	#4	STR	7'-8"	20
B6	4	#4	STR	38'-9"	104
B7	10	#4	STR	2'-11"	19
D1	50	#4	STR	5'-9"	192
H1	84	#6	2	15'-2"	1914
K1	50	#6	STR	2'-8"	200
S1	38	#5	3	11'-1"	439
S2	38	#5	4	3'-10"	152
S3	28	#4	5	6'-6"	122
U1	12	#4	6	6'-11"	55
V1	36	#5	STR	10'-2"	382
V2	36	#5	STR	9'-5"	354

REINFORCING STEEL	5,856 LBS.
CLASS A CONCRETE	
POUR #1 COLLARS, CAP, AND LOWER PART OF WINGS	25.9 C.Y.
POUR #2 UPPER PART OF WINGS	7.3 C.Y.
TOTAL CLASS A CONCRETE	33.2 C.Y.
HP 12X53 STEEL PILES	
NO. 7	525 LIN. FT.
PILE DRIVING EQUIPMENT SETUP	7 EA.
PILE REDRIVES	4 EA.



SECTION A-A

THE TOP SURFACE OF THE END BENT CAP AND WINGS, EXCLUDING THE BEARING AREA, SHALL BE RAKED TO A DEPTH OF 1/4"



SECTION B-B

THE TOP SURFACE OF THE END BENT CAP AND WINGS, EXCLUDING THE BEARING AREA, SHALL BE RAKED TO A DEPTH OF 1/4"

PROJECT NO. B-4484  
CRAVEN COUNTY  
 STATION: 41+45.00 -L1-

SHEET 3 OF 3 REPLACES BRIDGE NO. 240139

RS&H Architects-Engineers-Planners, Inc.  
 8521 Six Forks Road, Suite 400  
 919-926-4100 FAX 919-846-9080  
 www.rsandh.com  
 North Carolina License No. 50737-F-0403-C-28

STATE OF NORTH CAROLINA  
 DEPARTMENT OF TRANSPORTATION  
 RALEIGH  
 SUBSTRUCTURE  
 INTEGRAL  
 END BENT NO. 2  
 DETAILS

REVISIONS						SHEET NO.
NO.	BY:	DATE:	NO.	BY:	DATE:	
1			3			S2-28
2			4			TOTAL SHEETS 31

DOCUMENT NOT CONSIDERED FINAL UNLESS ALL SIGNATURES COMPLETED

DRAWN BY :	NSC	DATE :	04/2019
CHECKED BY :	JMR	DATE :	05/2019
DESIGN ENGINEER OF RECORD:	PDS	DATE :	06/2019