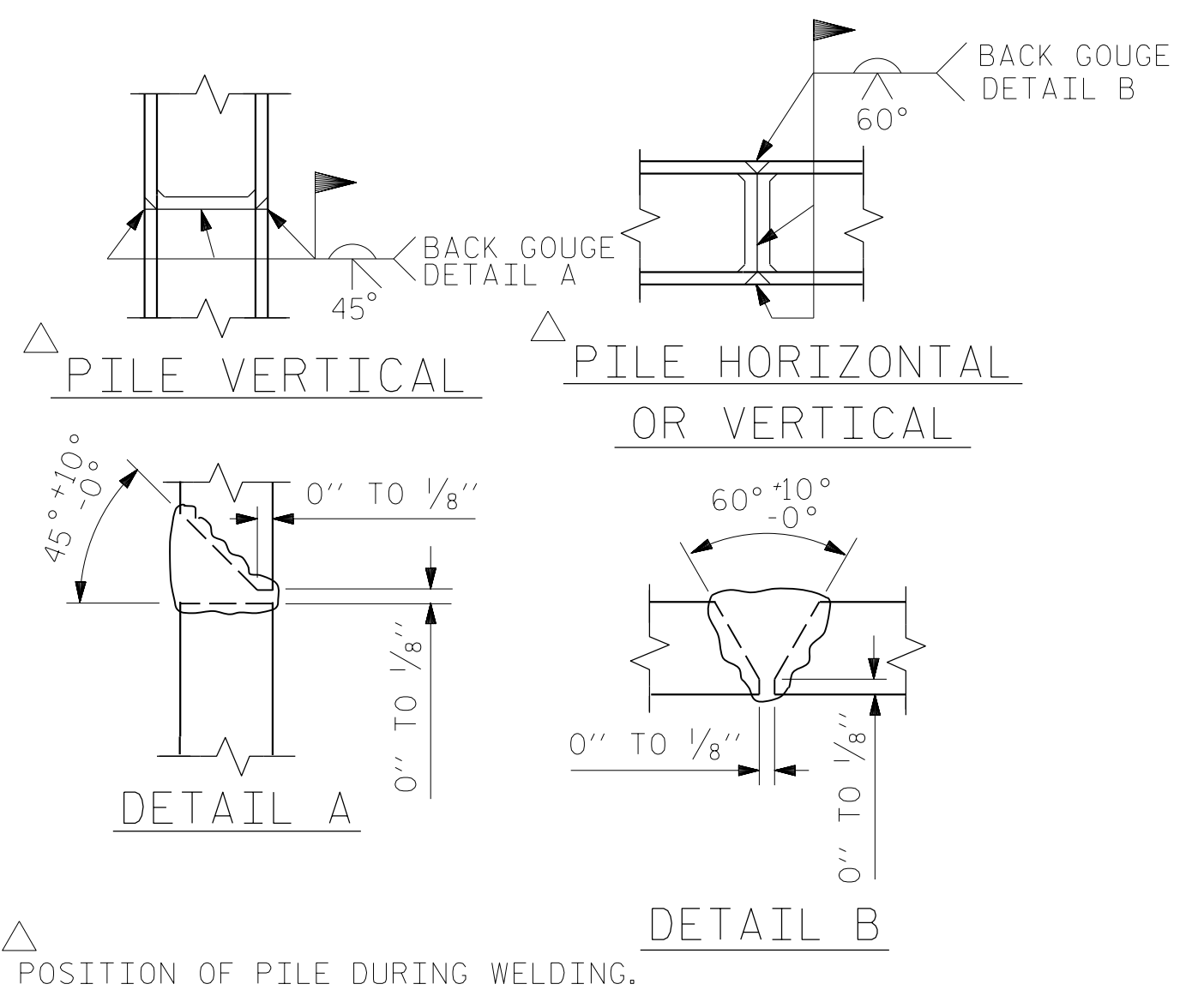


BAGGED STONE AND PIPE SHALL BE PLACED IMMEDIATELY AFTER COMPLETION OF END BENT EXCAVATION. PIPE MAY BE EITHER CONCRETE, CORRUGATED STEEL, CORRUGATED ALUMINUM ALLOY, OR CORRUGATED PLASTIC. PERFORATED PIPE WILL NOT BE ALLOWED.

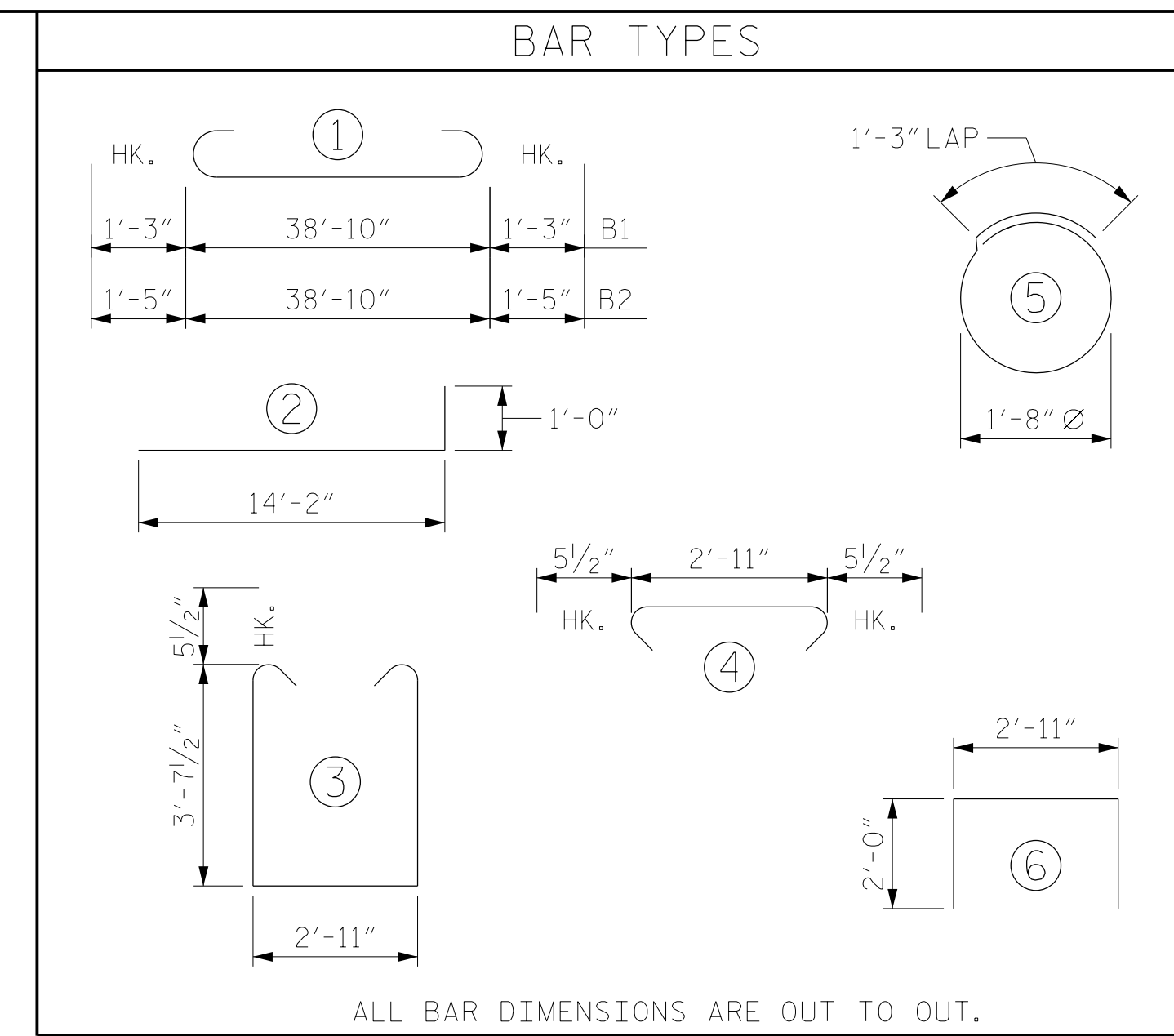
BAGGED STONE SHALL REMAIN IN PLACE UNTIL THE ENGINEER DIRECTS THAT IT BE REMOVED. THE CONTRACTOR SHALL REMOVE AND DISPOSE OF SILT ACCUMULATIONS AT BAGGED STONE WHEN SO DIRECTED BY THE ENGINEER. BAGS SHALL BE REMOVED AND REPLACED WHENEVER THE ENGINEER DETERMINES THAT THEY HAVE DETERIORATED AND LOST THEIR EFFECTIVENESS.

NO SEPARATE PAYMENT WILL BE MADE FOR THIS WORK AND THE ENTIRE COST OF THIS WORK SHALL BE INCLUDED IN THE UNIT CONTRACT PRICE BID FOR THE SEVERAL PAY ITEMS.

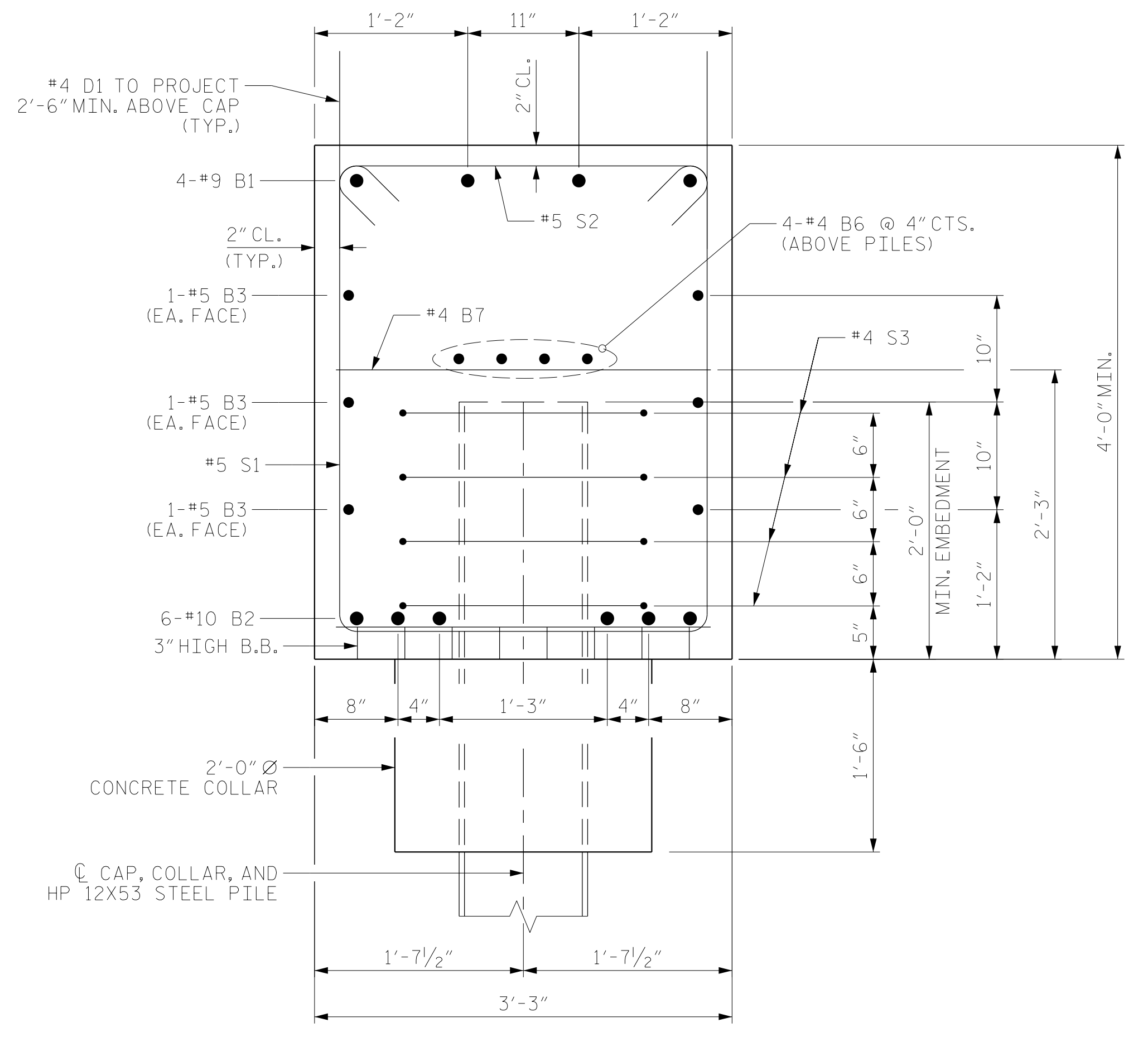
TEMPORARY DRAINAGE AT END BENT



PILE SPLICE DETAILS

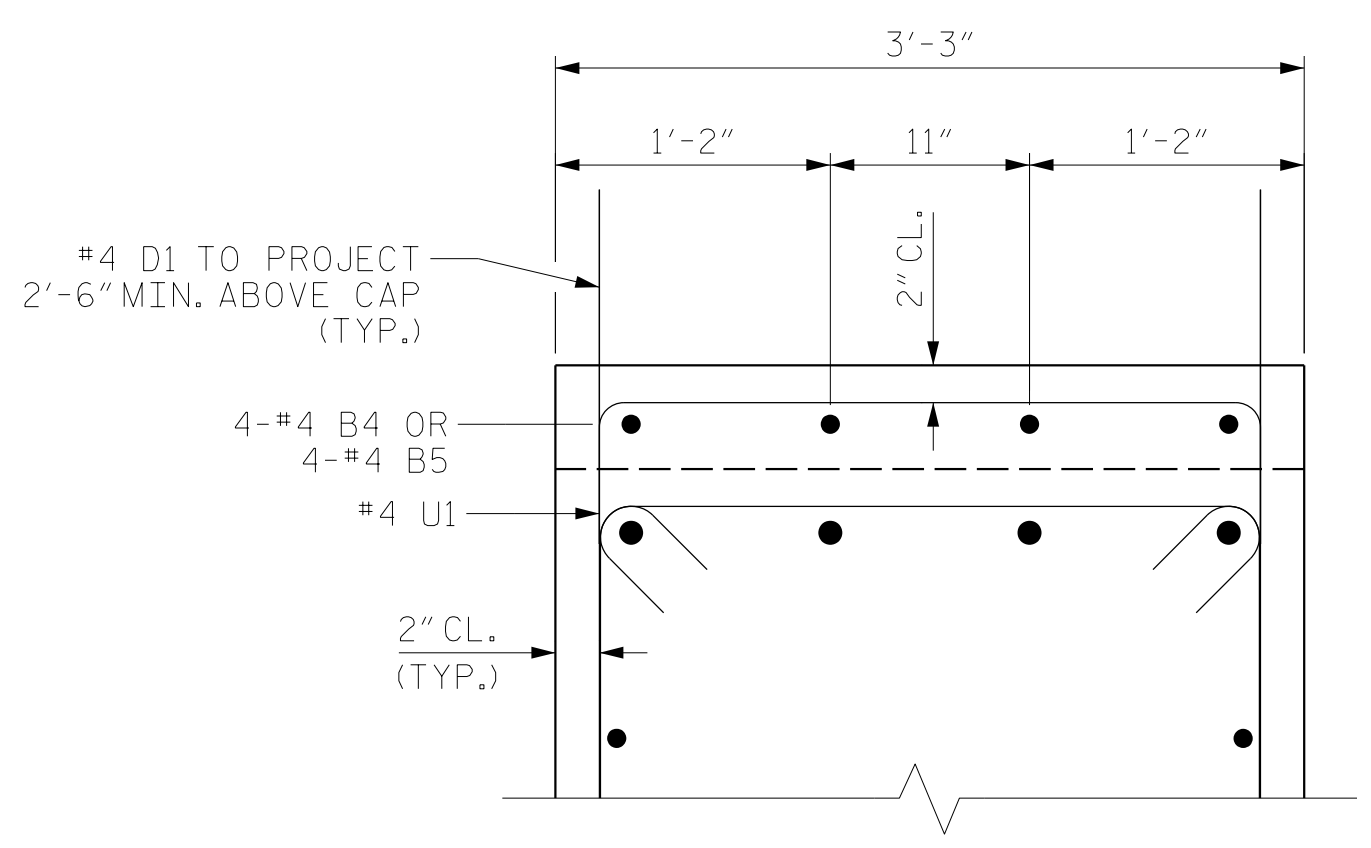


BILL OF MATERIAL					
END BENT NO. 1					
BAR	NO.	SIZE	TYPE	LENGTH	WEIGHT
B1	4	#9	1	41'-4"	562
B2	6	#10	1	41'-8"	1076
B3	6	#5	STR	38'-9"	242
B4	4	#4	STR	8'-6"	23
B5	4	#4	STR	7'-8"	20
B6	4	#4	STR	38'-9"	104
B7	10	#4	STR	2'-11"	19
D1	50	#4	STR	5'-9"	192
H1	84	#6	2	15'-2"	1914
K1	50	#6	STR	2'-8"	200
S1	38	#5	3	11'-1"	439
S2	38	#5	4	3'-10"	152
S3	28	#4	5	6'-6"	122
U1	12	#4	6	6'-11"	55
V1	36	#5	STR	9'-5"	354
V2	36	#5	STR	10'-2"	382
REINFORCING STEEL					5,856 LBS.
CLASS A CONCRETE					
POUR #1 COLLARS, CAP, AND LOWER PART OF WINGS					25.9 C.Y.
POUR #2 UPPER PART OF WINGS					7.3 C.Y.
TOTAL CLASS A CONCRETE					33.2 C.Y.
HP 12X53 STEEL PILES					
NO. 7					525 LIN. FT.
PILE DRIVING EQUIPMENT SETUP					7 EA.
PILE REDRIVES					4 EA.



SECTION A-A

THE TOP SURFACE OF THE END BENT CAP AND WINGS, EXCLUDING THE BEARING AREA, SHALL BE RAKED TO A DEPTH OF 1/4"



SECTION B-B

THE TOP SURFACE OF THE END BENT CAP AND WINGS, EXCLUDING THE BEARING AREA, SHALL BE RAKED TO A DEPTH OF 1/4"

PROJECT NO. B-4484
CRAVEN COUNTY
 STATION: 41+45.00 -L1-

SHEET 3 OF 3 REPLACES BRIDGE NO. 240139

RS&H Architects-Engineers-Planners, Inc.
 8521 Six Forks Road, Suite 400
 919-926-4100 FAX 919-846-9080
 www.rsandh.com
 North Carolina License No. 50737-F-0403-C-08

STATE OF NORTH CAROLINA DEPARTMENT OF TRANSPORTATION RALEIGH					
SUBSTRUCTURE INTEGRAL END BENT NO. 1 DETAILS					
REVISIONS					SHEET NO.
NO.	BY:	DATE:	NO.	BY:	DATE:
1			3		
2			4		
					TOTAL SHEETS 31

DRAWN BY : NSC	DATE : 04/2019
CHECKED BY : JMR	DATE : 05/2019
DESIGN ENGINEER OF RECORD: PDS	DATE : 06/2019

DOCUMENT NOT CONSIDERED FINAL UNLESS ALL SIGNATURES COMPLETED