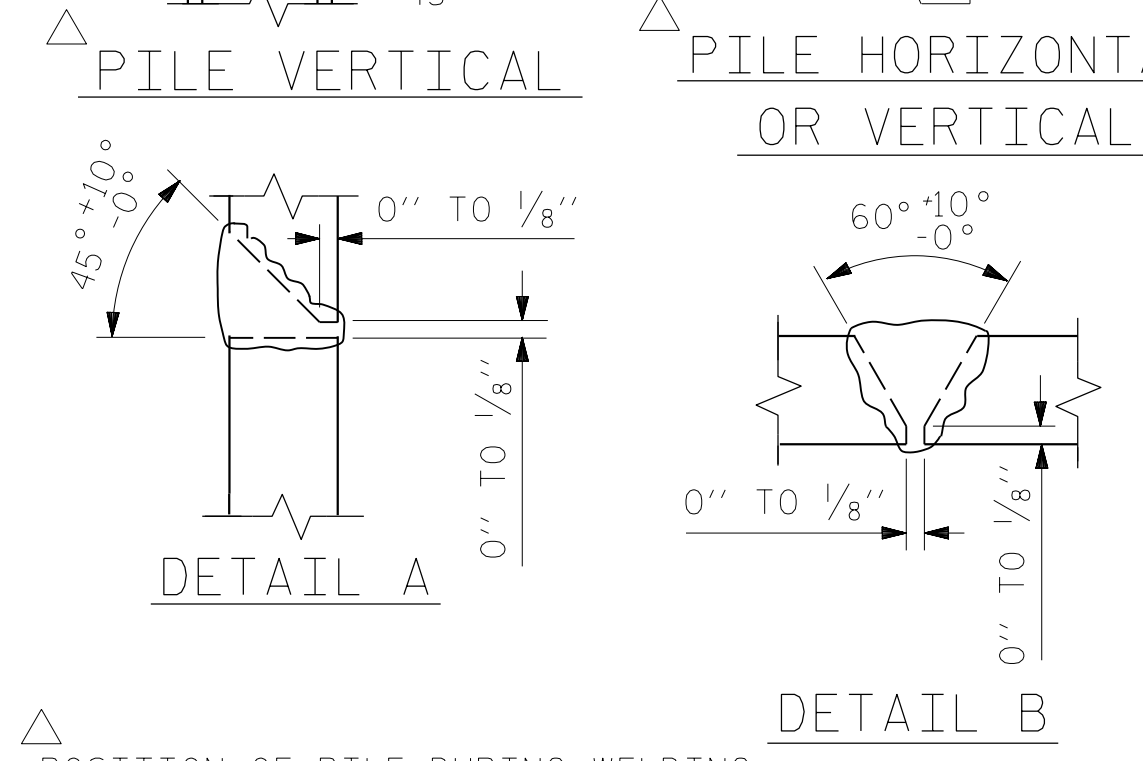
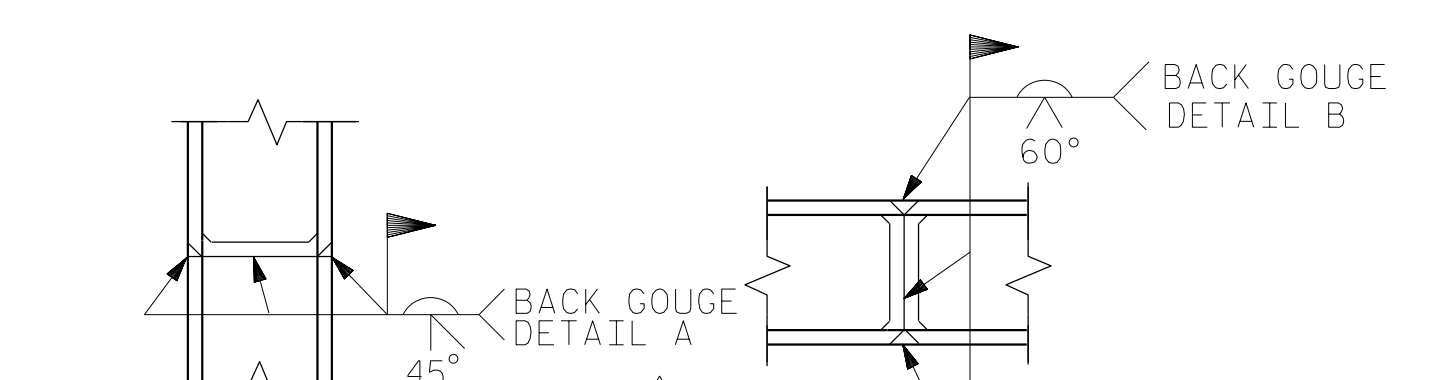


BAGGED STONE AND PIPE SHALL BE PLACED IMMEDIATELY AFTER COMPLETION OF END BENT EXCAVATION. PIPE MAY BE EITHER CONCRETE, CORRUGATED STEEL, CORRUGATED ALUMINUM ALLOY, OR CORRUGATED PLASTIC. PERFORATED PIPE WILL NOT BE ALLOWED.

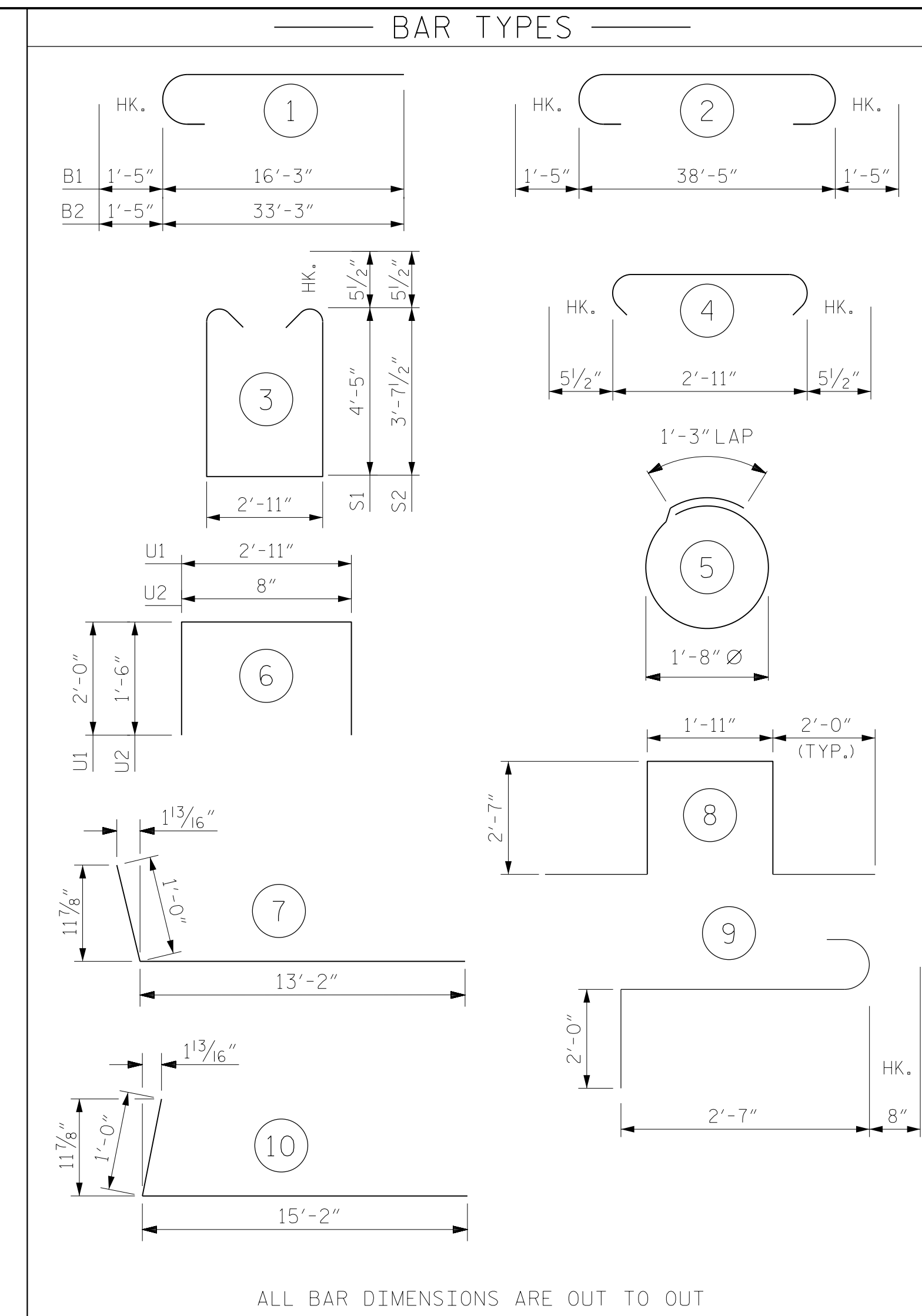
BAGGED STONE SHALL REMAIN IN PLACE UNTIL THE ENGINEER DIRECTS THAT IT BE REMOVED. THE CONTRACTOR SHALL REMOVE AND DISPOSE OF SILT ACCUMULATIONS AT BAGGED STONE WHEN SO DIRECTED BY THE ENGINEER. BAGS SHALL BE REMOVED AND REPLACED WHENEVER THE ENGINEER DETERMINES THAT THEY HAVE DETERIORATED AND LOST THEIR EFFECTIVENESS.

NO SEPARATE PAYMENT WILL BE MADE FOR THIS WORK AND THE ENTIRE COST OF THIS WORK SHALL BE INCLUDED IN THE UNIT CONTRACT PRICE BID FOR THE SEVERAL PAY ITEMS.

TEMPORARY DRAINAGE AT END BENT

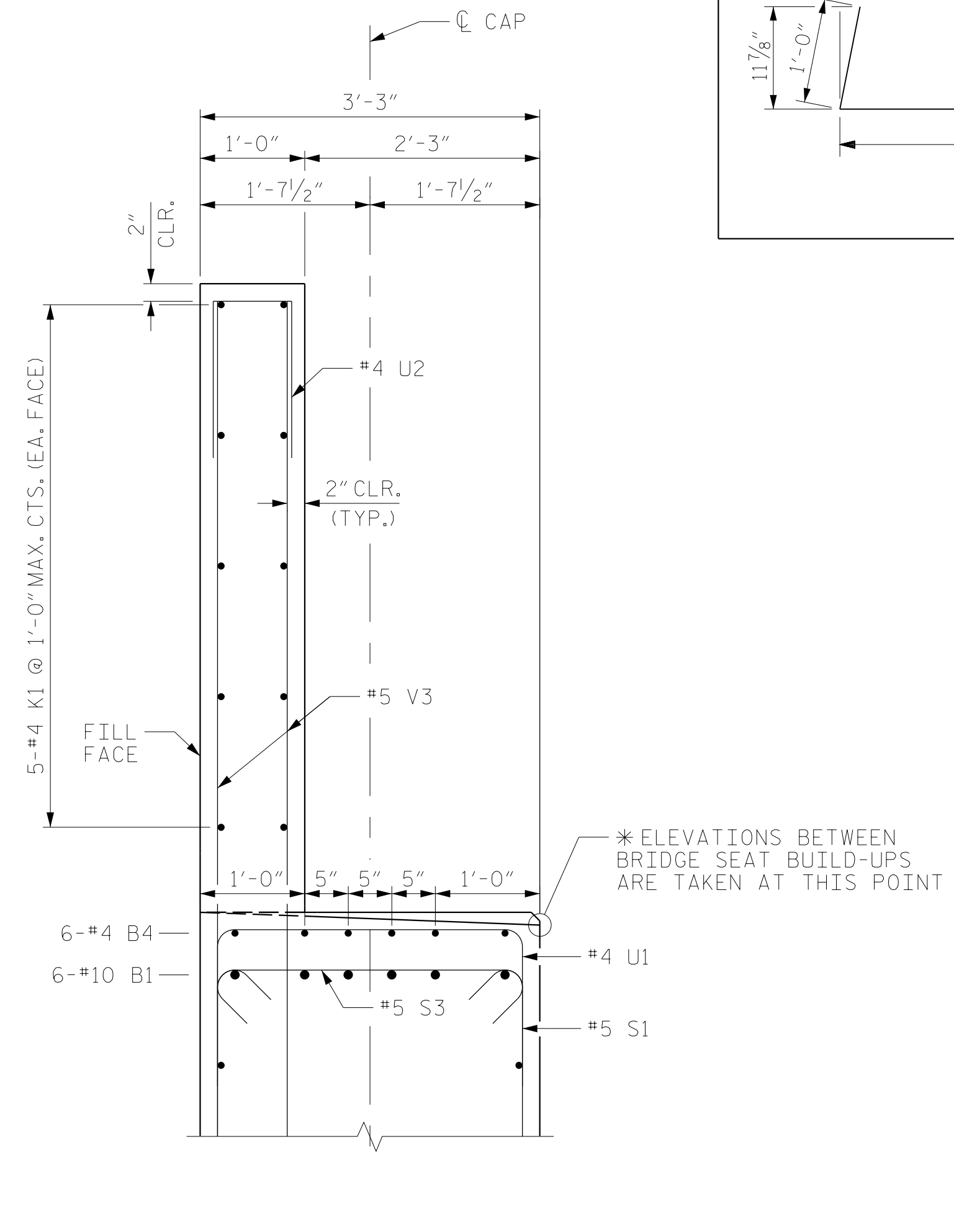
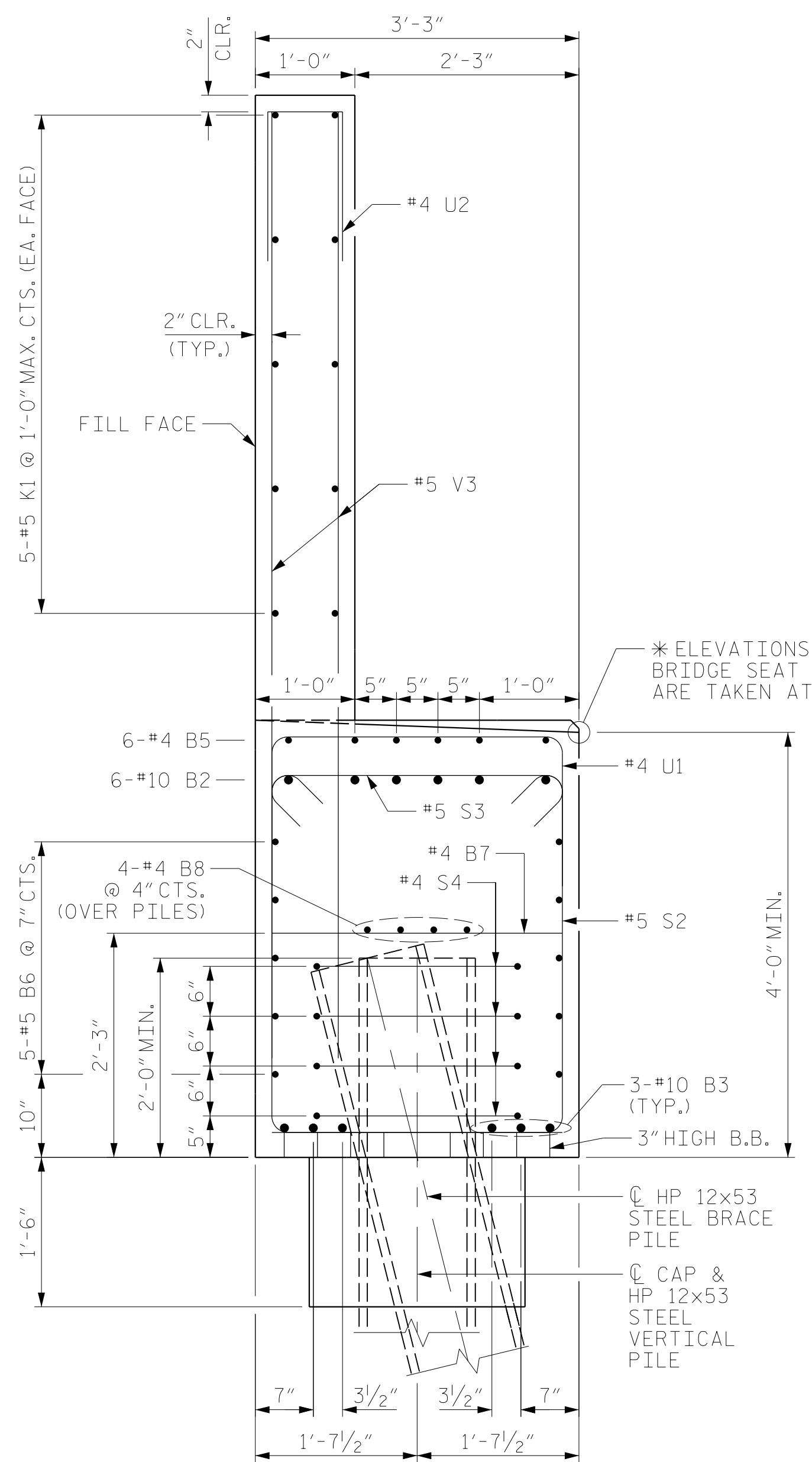


PILE SPLICE DETAILS



ALL BAR DIMENSIONS ARE OUT TO OUT

| BILL OF MATERIAL | | | | | | |
|---|-----|------|------|--------|----------|--|
| END BENT NO. 2 | | | | | | |
| BAR | NO. | SIZE | TYPE | LENGTH | WEIGHT | |
| B1 | 6 | #10 | 1 | 17'-8" | 456 | |
| B2 | 6 | #10 | 1 | 34'-8" | 895 | |
| B3 | 6 | #10 | 2 | 41'-3" | 1065 | |
| B4 | 6 | #4 | STR | 7'-2" | 29 | |
| B5 | 6 | #4 | STR | 11'-7" | 46 | |
| B6 | 10 | #5 | STR | 38'-5" | 401 | |
| B7 | 10 | #4 | STR | 2'-11" | 19 | |
| B8 | 4 | #4 | STR | 38'-5" | 103 | |
| H1 | 40 | #6 | 7 | 14'-2" | 851 | |
| H2 | 24 | #4 | 10 | 16'-2" | 259 | |
| K1 | 10 | #5 | STR | 38'-5" | 401 | |
| K2 | 8 | #4 | STR | 3'-0" | 16 | |
| S1 | 18 | #5 | 3 | 12'-8" | 238 | |
| S2 | 34 | #5 | 3 | 11'-1" | 393 | |
| S3 | 52 | #5 | 4 | 3'-10" | 208 | |
| S4 | 28 | #4 | 5 | 6'-6" | 122 | |
| S5 | 3 | #6 | 8 | 11'-1" | 50 | |
| S6 | 3 | #6 | 9 | 5'-3" | 24 | |
| U1 | 18 | #4 | 6 | 6'-11" | 83 | |
| U2 | 32 | #4 | 6 | 3'-8" | 78 | |
| V1 | 34 | #5 | STR | 9'-8" | 343 | |
| V2 | 38 | #5 | STR | 11'-0" | 436 | |
| V3 | 64 | #5 | STR | 8'-0" | 534 | |
| REINFORCING STEEL | | | | 7,050 | LBS. | |
| CLASS A CONCRETE | | | | | | |
| POUR #1 | | | | | | |
| CAP, COLLAR & LOWER PART OF WING & BACKWALL | | | | 27.9 | C.Y. | |
| POUR #2 | | | | | | |
| UPPER PART OF WING & BACKWALL | | | | 13.5 | C.Y. | |
| TOTAL CLASS A CONCRETE | | | | 41.4 | C.Y. | |
| HP 12 X 53 STEEL PILES | | | | | | |
| NO. 8 | | | | 520 | LIN. FT. | |
| PILE DRIVING EQUIPMENT SETUP | | | | 8 | EA. | |
| PILE REDRIVES | | | | 5 | EA. | |



DRAWN BY : MRA DATE : 04/2019
 CHECKED BY : JMR DATE : 06/2019
 DESIGN ENGINEER OF RECORD: MAL DATE : 06/2019

DOCUMENT NOT CONSIDERED FINAL UNLESS ALL SIGNATURES COMPLETED

RS&H Architects-Engineers-Planners, Inc.
 8521 Six Forks Road, Suite 400
 919-926-4100 FAX 919-846-9080
 www.rsandh.com
 North Carolina License No. 00737-0403-C&E

PROJECT NO. B-4484
 CRAVEN COUNTY
 STATION: 25+06.00 -L1-

SHEET 3 OF 3 REPLACES BRIDGE NO. 240138

| STATE OF NORTH CAROLINA DEPARTMENT OF TRANSPORTATION RALEIGH | | | | | | |
|--|-----|-------|-----|-----|-------|--------------|
| SUBSTRUCTURE END BENT 2 DETAILS | | | | | | |
| REVISIONS | | | | | | SHEET NO. |
| NO. | BY: | DATE: | NO. | BY: | DATE: | S1-34 |
| 1 | | | 3 | | | TOTAL SHEETS |
| 2 | | | 4 | | | 37 |