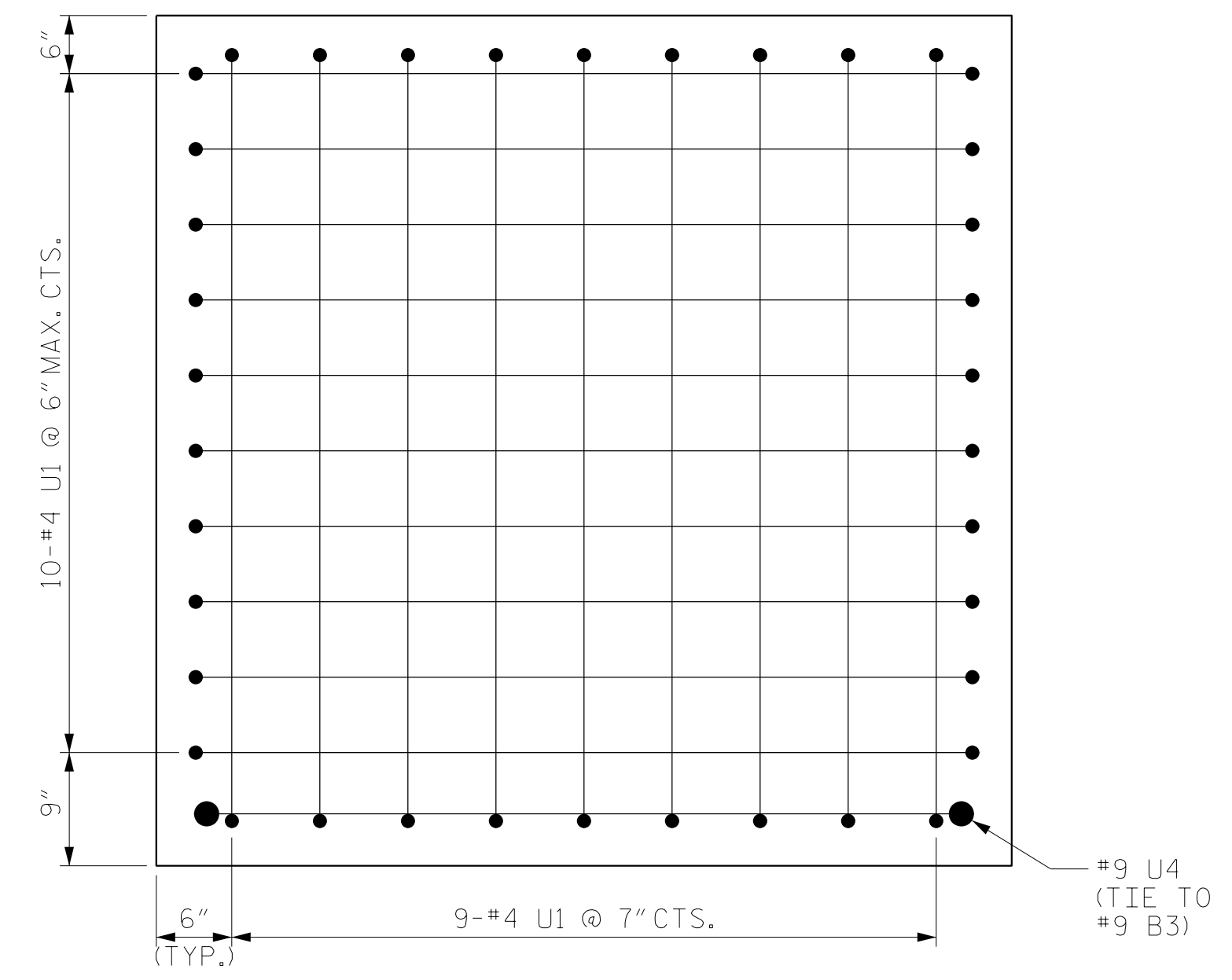
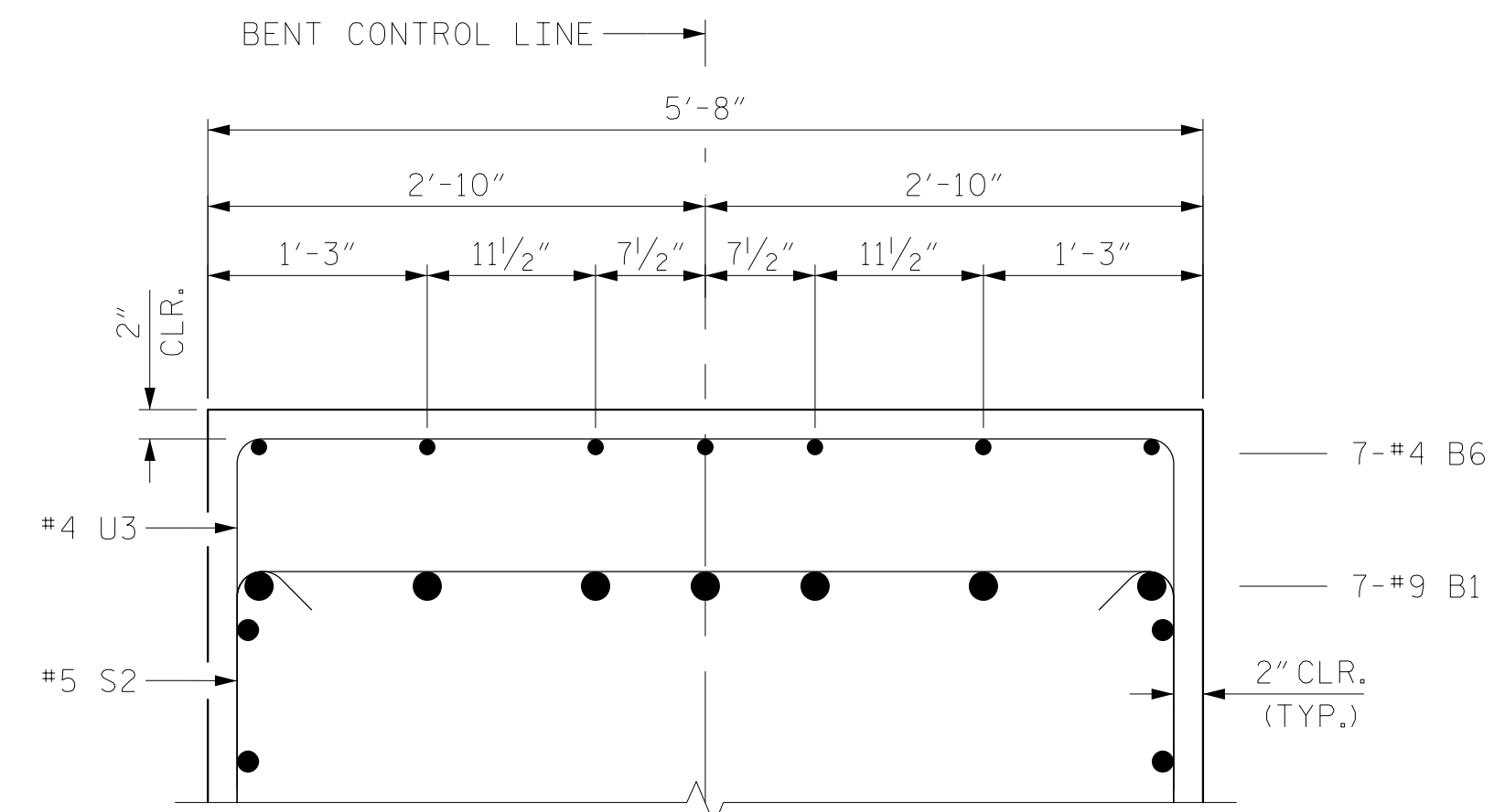


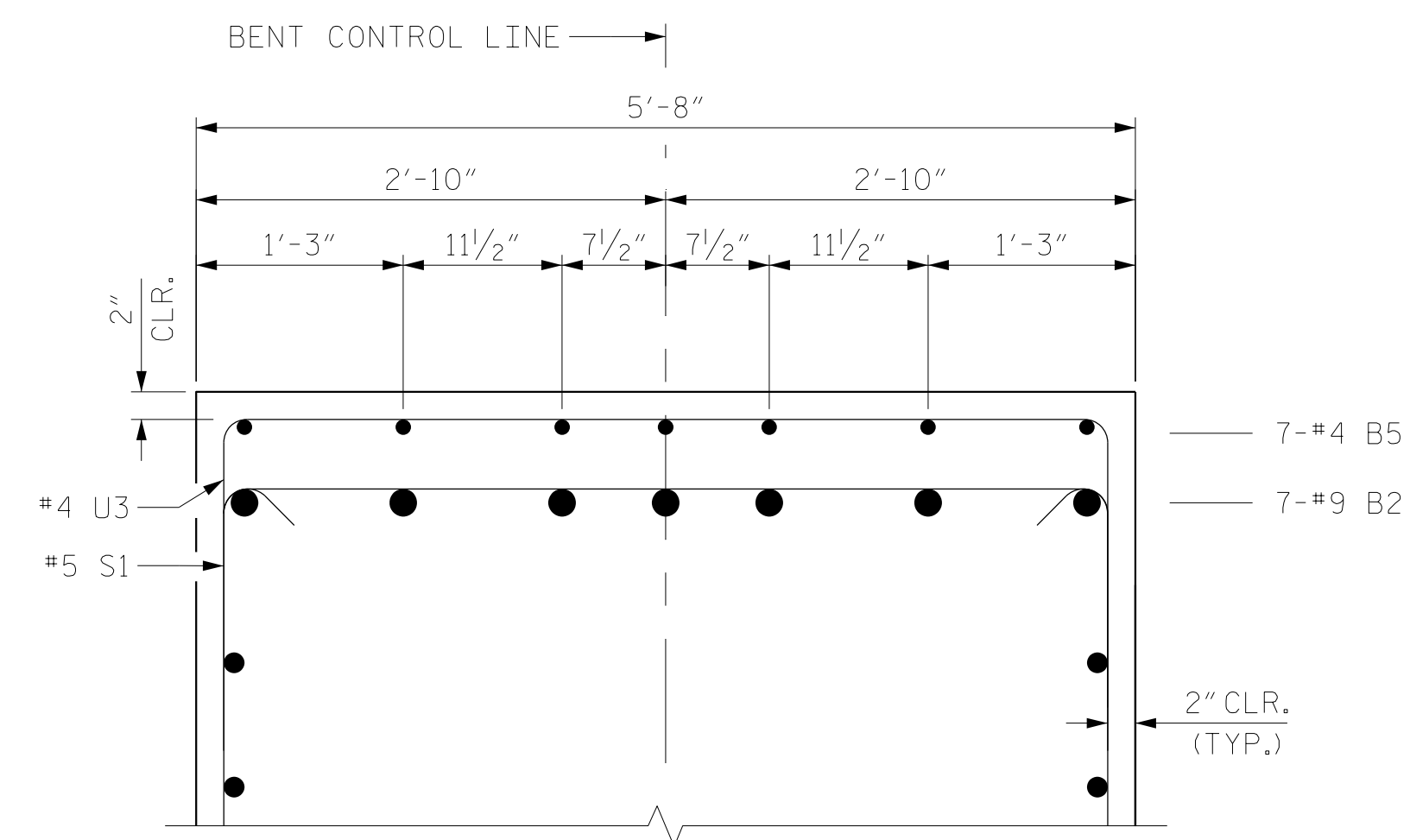
SECTION A-A



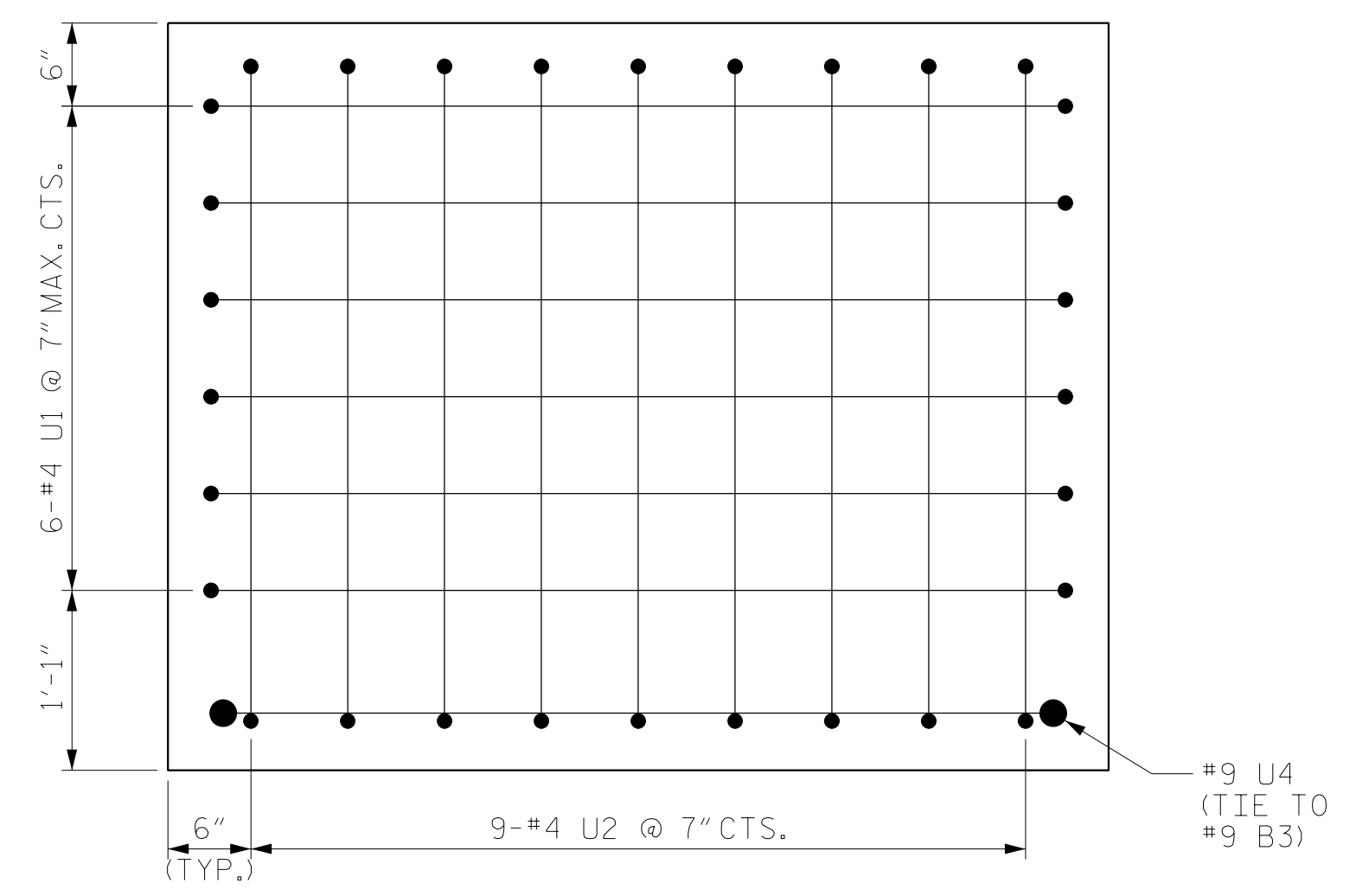
VIEW D-D



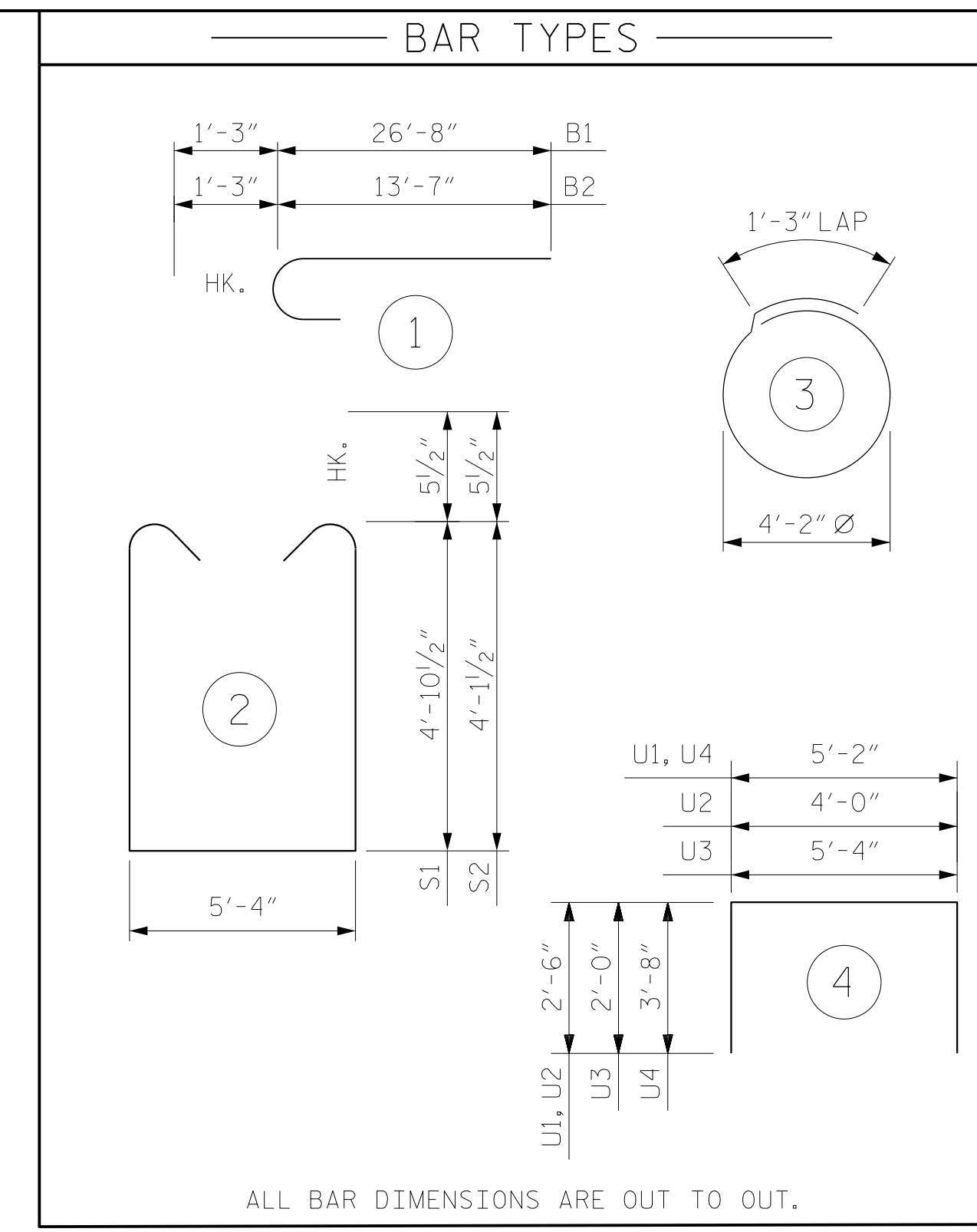
PARTIAL SECTION B-B



PARTIAL SECTION C-C



VIEW E-E



BILL OF MATERIAL					
FOR ONE BENT					
BAR	NO.	SIZE	TYPE	LENGTH	WEIGHT
B1	7	#9	1	27'-11"	664
B2	7	#9	1	14'-10"	353
B3	6	#9	STR	31'-4"	639
B4	6	#5	STR	5'-6"	34
B5	7	#4	STR	4'-8"	22
B6	7	#4	STR	11'-5"	53
B7	10	#5	STR	31'-8"	330
B8	9	#4	STR	5'-4"	32
B9	5	#4	STR	31'-8"	106
S1	9	#5	2	16'-0"	150
S2	16	#5	2	14'-6"	242
S3	16	#4	3	14'-4"	153
U1	25	#4	4	10'-2"	170
U2	9	#4	4	9'-0"	54
U3	34	#4	4	9'-4"	212
U4	2	#9	4	12'-6"	85
REINFORCING STEEL (FOR ONE BENT)					3,299 LBS.
CLASS A CONCRETE BREAKDOWN					
▲ CLASS A CONCRETE (BENT 1)					31.3 C.Y.
▲ CLASS A CONCRETE (BENT 2)					31.3 C.Y.
▲ CLASS A CONCRETE (BENT 3)					31.3 C.Y.
▲ CLASS A CONCRETE (BENT 4)					31.4 C.Y.
▲ CLASS A CONCRETE (BENT 5)					31.5 C.Y.
PP 36 X 0.50 GALVANIZED STEEL PILES					
BENT 1	NO. 4				400 LIN. FT.
BENT 2	NO. 4				420 LIN. FT.
BENT 3	NO. 4				420 LIN. FT.
BENT 4	NO. 4				400 LIN. FT.
BENT 5	NO. 4				420 LIN. FT.
STEEL PILE POINTS (FOR ONE BENT)					NO. 4
PILE DRIVING EQUIPMENT SETUP (FOR ONE BENT)					NO. 4
PILE REDRIVES (FOR ONE BENT)					NO. 2
TOP PIPE PILE PLATES (FOR ONE BENT)					NO. 4

PROJECT NO. B-4484  
CRAVEN COUNTY  
 STATION: 25+06.00 -L1-

SHEET 2 OF 2 REPLACES BRIDGE NO. 240138



**RS&H**  
 RS&H Architects-Engineers-Planners, Inc.  
 8521 Six Forks Road, Suite 400  
 919-926-4100 FAX 919-846-9080  
 www.rsandh.com  
 North Carolina License No. 50737-F-0403-C-02

STATE OF NORTH CAROLINA  
 DEPARTMENT OF TRANSPORTATION  
 RALEIGH  
 SUBSTRUCTURE  
 BENTS 1 - 5  
 DETAILS

DRAWN BY : MRA	DATE : 04/2019
CHECKED BY : JMR	DATE : 06/2019
DESIGN ENGINEER OF RECORD: MAL	DATE : 06/2019

DOCUMENT NOT CONSIDERED  
 FINAL UNLESS ALL  
 SIGNATURES COMPLETED

REVISIONS						SHEET NO.
NO.	BY:	DATE:	NO.	BY:	DATE:	S1-30
1			3			TOTAL SHEETS
2			4			37