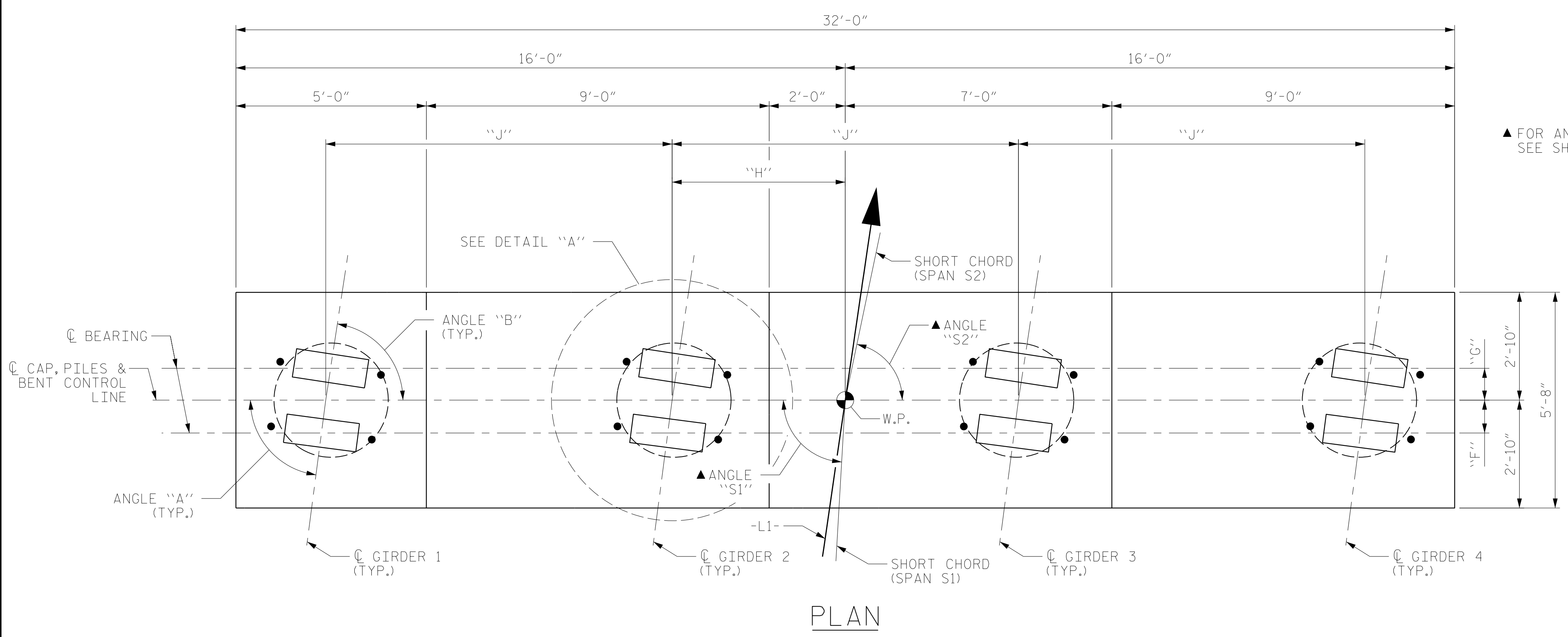
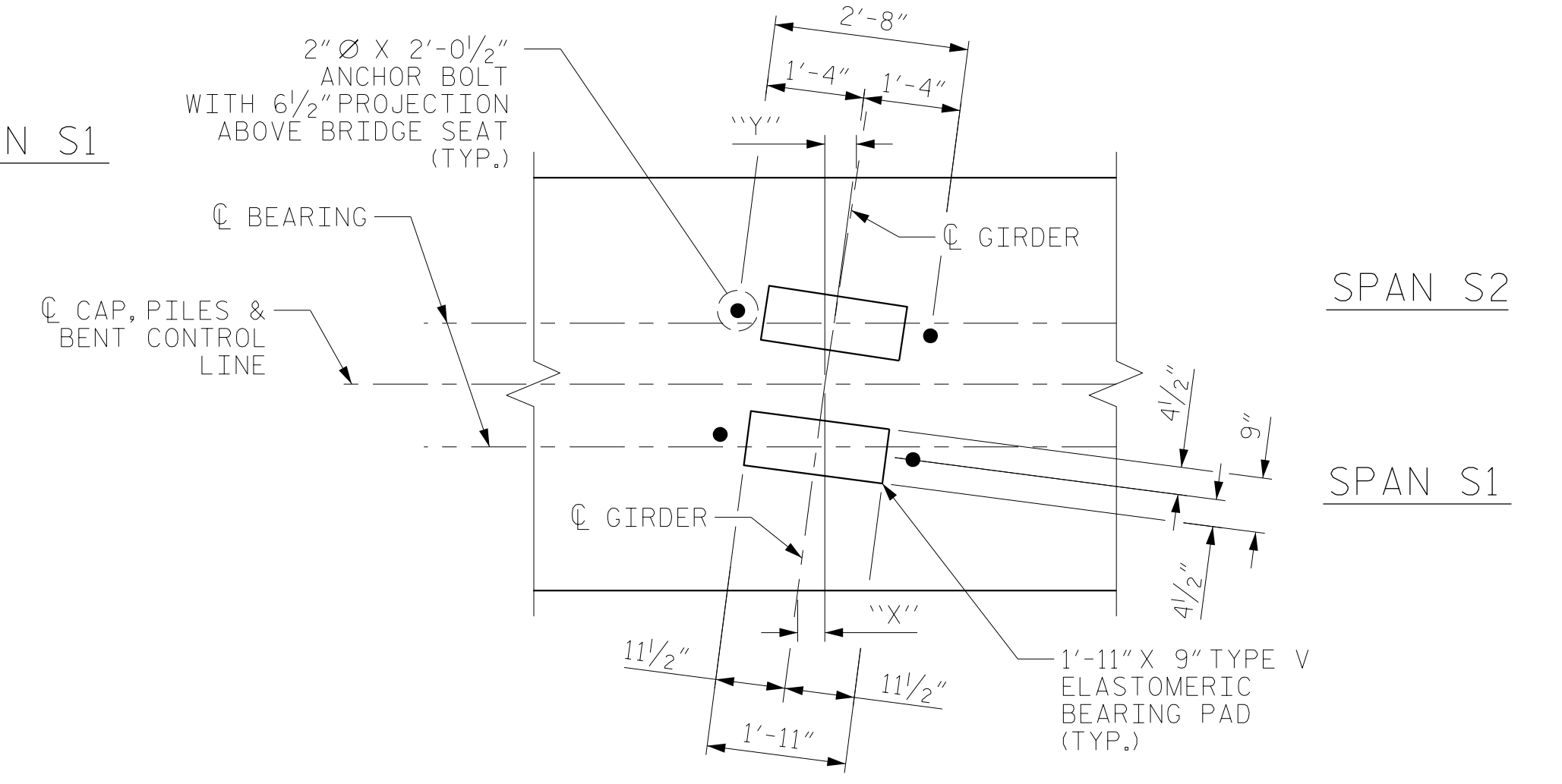


NOTES

- FOR SECTION A-A, PARTIAL SECTIONS B-B AND C-C AND VIEWS D-D AND E-E, SEE SHEET 2 OF 2.
- FOR REINFORCING STEEL BILL OF MATERIAL, SEE SHEET 2 OF 2.
- FOR ADDITIONAL REINFORCING STEEL IN PP 36 X 0.50 GALVANIZED STEEL PILES, SEE "36"STEEL PIPE PILE" SHEET.
- U3, S1, AND S2 BARS MAY BE SHIFTED AS NECESSARY TO CLEAR ANCHOR BOLT.
- U1 AND U2 BARS MAY BE ROTATED AS NECESSARY SO LEGS OF BARS CLEAR PIPE PILES
- \*INVERT ALTERNATE STIRRUPS.
- GALVANIZE THE FULL LENGTH OF EACH INTERIOR BENT PILE. SEE "36"STEEL PIPE PILE" SHEET FOR ADDITIONAL NOTES.
- THE TOP SURFACE AREAS OF THE BENT CAP AT BENT 3 SHALL BE CURED IN ACCORDANCE WITH THE STANDARD SPECIFICATIONS EXCEPT THE MEMBRANE CURING COMPOUND METHOD SHALL NOT BE USED.



▲ FOR ANGLES "S1" & "S2"  
SEE SHORT CHORD ANGLES TABLE



DETAIL "A"

DIMENSIONS TYPICAL FOR EACH BEARING. STEP NOT SHOWN FOR CLARITY. FOR DIMENSIONS "X" AND "Y", SEE GIRDER ANGLES TABLE

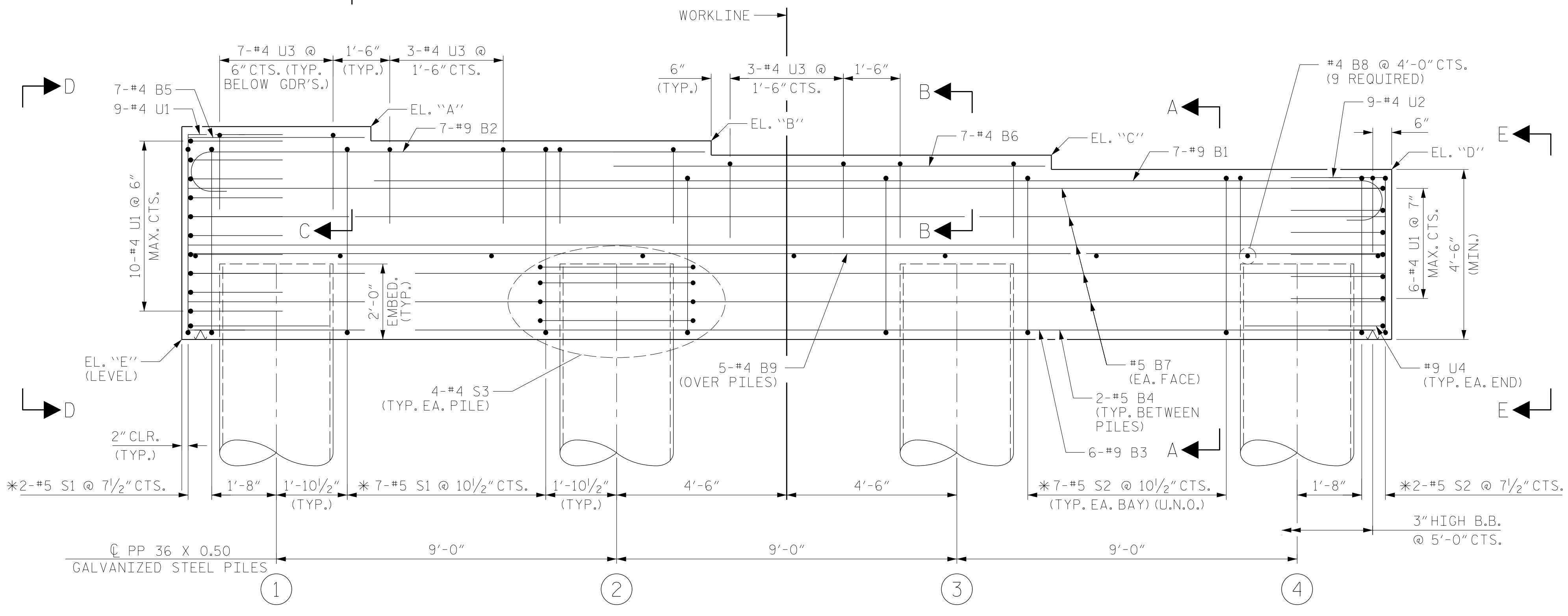
| BENT 1 |             |             |      |        | BENT 2 |             |             |        |         |
|--------|-------------|-------------|------|--------|--------|-------------|-------------|--------|---------|
| GIRDER | ANGLE "A"   | ANGLE "B"   | X    | Y      | GIRDER | ANGLE "A"   | ANGLE "B"   | X      | Y       |
| 1      | 89°-10'-22" | 87°-31'-07" | 1/2" | 1 1/2" | 1      | 87°-31'-07" | 85°-51'-52" | 1 1/2" | 2 1/16" |
| 2      | 89°-10'-15" | 87°-30'-44" | 1/2" | 1 1/2" | 2      | 87°-30'-44" | 85°-51'-13" | 1 1/2" | 2 1/16" |
| 3      | 89°-10'-07" | 87°-30'-20" | 1/2" | 1 1/2" | 3      | 87°-30'-20" | 85°-50'-34" | 1 1/2" | 2 1/2"  |
| 4      | 89°-09'-59" | 87°-29'-57" | 1/2" | 1 1/2" | 4      | 87°-29'-57" | 85°-49'-54" | 1 1/2" | 2 1/2"  |

| BENT 3 |             |             |         |         | BENT 4 |             |             |         |         |
|--------|-------------|-------------|---------|---------|--------|-------------|-------------|---------|---------|
| GIRDER | ANGLE "A"   | ANGLE "B"   | X       | Y       | GIRDER | ANGLE "A"   | ANGLE "B"   | X       | Y       |
| 1      | 85°-51'-52" | 84°-12'-36" | 2 1/16" | 3 1/16" | 1      | 84°-12'-36" | 82°-33'-21" | 3 1/16" | 4 1/16" |
| 2      | 85°-51'-13" | 84°-11'-42" | 2 1/16" | 3 1/16" | 2      | 84°-11'-42" | 82°-32'-11" | 3 1/16" | 4 1/16" |
| 3      | 85°-50'-34" | 84°-10'-48" | 2 1/2"  | 3 1/16" | 3      | 84°-10'-48" | 82°-31'-01" | 3 1/16" | 4 1/16" |
| 4      | 85°-49'-54" | 84°-09'-52" | 2 1/2"  | 3 1/2"  | 4      | 84°-09'-52" | 82°-29'-50" | 3 1/2"  | 4 1/2"  |

| BENT 5 |             |             |         |         |
|--------|-------------|-------------|---------|---------|
| GIRDER | ANGLE "A"   | ANGLE "B"   | X       | Y       |
| 1      | 82°-33'-21" | 81°-20'-42" | 4 1/16" | 5 3/16" |
| 2      | 82°-32'-11" | 81°-20'-21" | 4 1/16" | 5 3/16" |
| 3      | 82°-31'-01" | 81°-20'-00" | 4 1/16" | 5 3/16" |
| 4      | 82°-29'-50" | 81°-19'-41" | 4 1/2"  | 5 3/16" |



ELEVATION

| BENT | W.P. | SPANS |    | ELEVATIONS |       |       |       |       | BEARING OFFSETS |          |          |            |            |
|------|------|-------|----|------------|-------|-------|-------|-------|-----------------|----------|----------|------------|------------|
|      |      | S1    | S2 | A          | B     | C     | D     | E     | TOP OF PILE     | F        | G        | H          | J          |
| 1    | 2    | A     | B  | 29.12      | 28.77 | 28.41 | 28.05 | 23.55 | 25.55           | 10 1/16" | 10 1/16" | 4'-6"      | 9'-0 1/16" |
| 2    | 3    | B     | C  | 30.24      | 29.89 | 29.53 | 29.17 | 24.67 | 26.67           | 10 1/16" | 10 1/16" | 4'-6 1/16" | 9'-0 1/16" |
| 3    | 4    | C     | D  | 30.74      | 30.38 | 30.02 | 29.66 | 25.16 | 27.16           | 10 1/16" | 10 1/16" | 4'-6 3/16" | 9'-0 1/16" |
| 4    | 5    | D     | E  | 30.62      | 30.26 | 29.89 | 29.52 | 25.02 | 27.02           | 10 1/16" | 10 3/8"  | 4'-6 3/8"  | 9'-0 3/4"  |
| 5    | 6    | E     | F  | 29.88      | 29.51 | 29.13 | 28.75 | 24.25 | 26.25           | 10 3/8"  | 10 1/8"  | 4'-6 3/16" | 9'-1 1/8"  |

| SHORT CHORD ANGLES |             |             |
|--------------------|-------------|-------------|
| BENT               | ANGLE "S1"  | ANGLE "S2"  |
| 1                  | 89°-10'-11" | 87°-30'-32" |
| 2                  | 87°-30'-32" | 85°-50'-53" |
| 3                  | 85°-50'-53" | 84°-11'-15" |
| 4                  | 84°-11'-15" | 82°-31'-36" |
| 5                  | 82°-31'-36" | 81°-29'-24" |

PROJECT NO. B-4484  
CRAVEN COUNTY  
 STATION: 25+06.00 -L1-

SHEET 1 OF 2 REPLACES BRIDGE NO. 240138



| REVISIONS |     |       |     |     |       | SHEET NO.       |
|-----------|-----|-------|-----|-----|-------|-----------------|
| NO.       | BY: | DATE: | NO. | BY: | DATE: |                 |
| 1         |     |       | 3   |     |       | S1-29           |
| 2         |     |       | 4   |     |       | TOTAL SHEETS 37 |

DRAWN BY: MRA DATE: 04/2019  
 CHECKED BY: JMR DATE: 06/2019  
 DESIGN ENGINEER OF RECORD: MAL DATE: 06/2019

DOCUMENT NOT CONSIDERED FINAL UNLESS ALL SIGNATURES COMPLETED