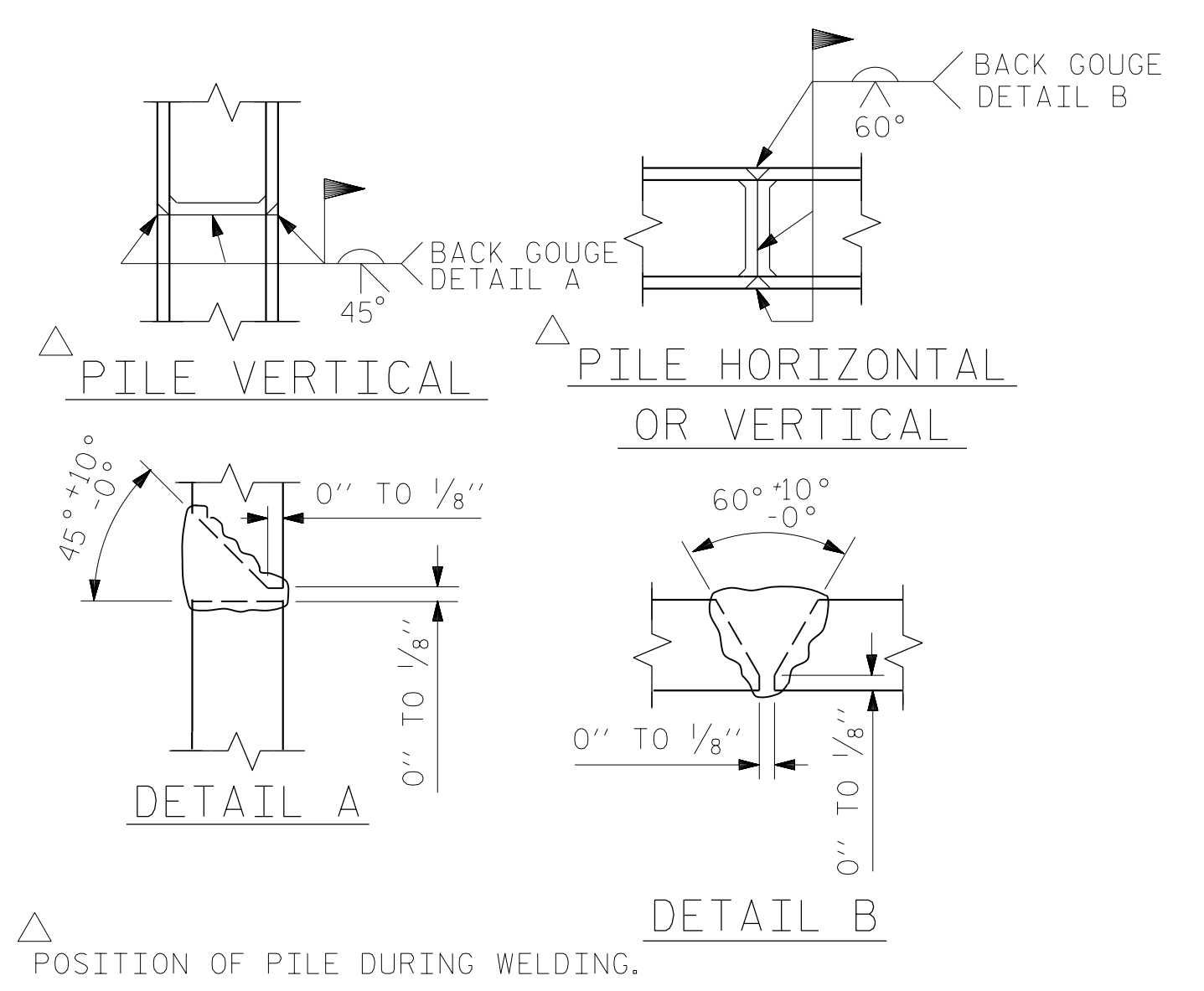


BAGGED STONE AND PIPE SHALL BE PLACED IMMEDIATELY AFTER COMPLETION OF END BENT EXCAVATION. PIPE MAY BE EITHER CONCRETE, CORRUGATED STEEL, CORRUGATED ALUMINUM ALLOY, OR CORRUGATED PLASTIC. PERFORATED PIPE WILL NOT BE ALLOWED.

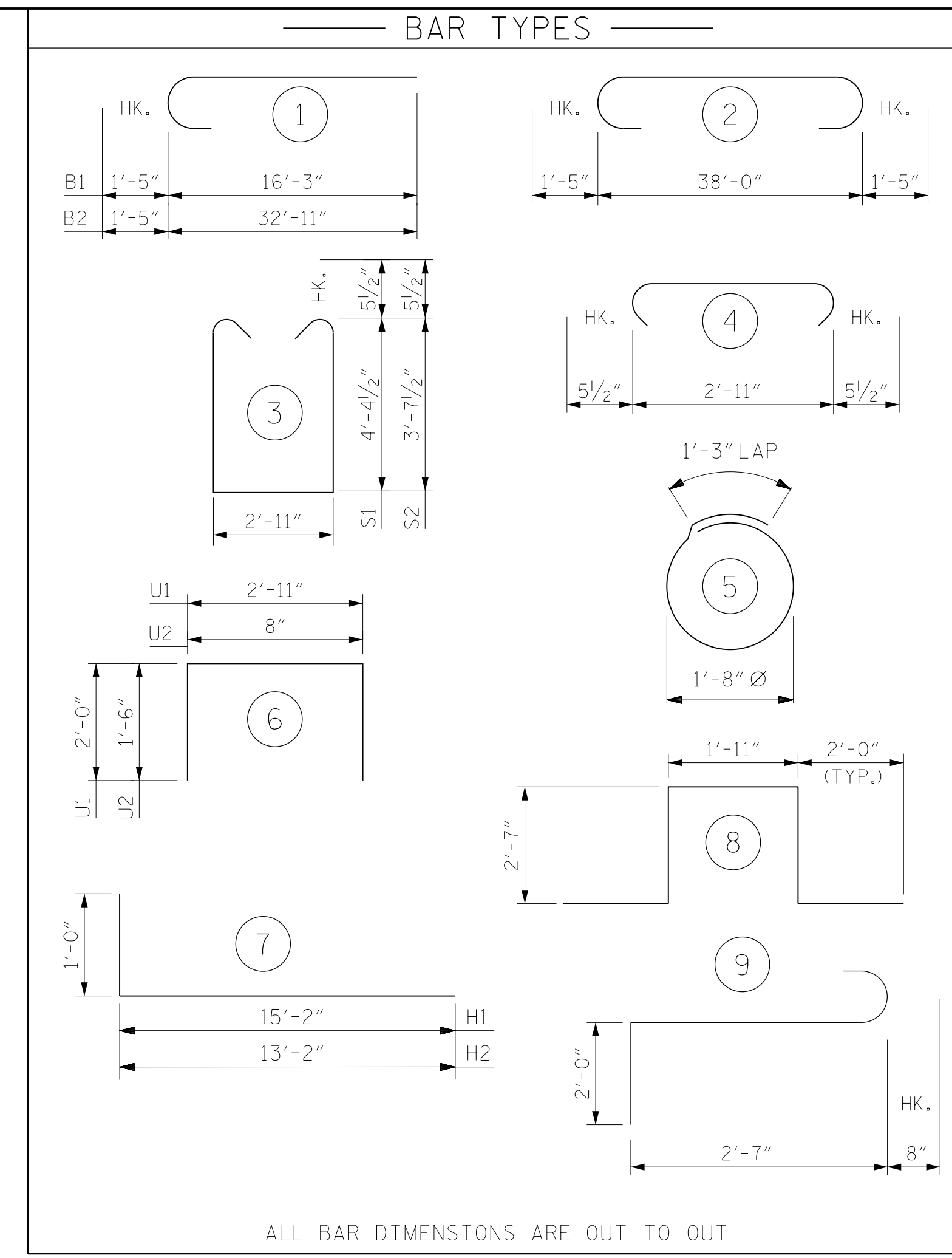
BAGGED STONE SHALL REMAIN IN PLACE UNTIL THE ENGINEER DIRECTS THAT IT BE REMOVED. THE CONTRACTOR SHALL REMOVE AND DISPOSE OF SILT ACCUMULATIONS AT BAGGED STONE WHEN SO DIRECTED BY THE ENGINEER. BAGS SHALL BE REMOVED AND REPLACED WHENEVER THE ENGINEER DETERMINES THAT THEY HAVE DETERIORATED AND LOST THEIR EFFECTIVENESS.

NO SEPARATE PAYMENT WILL BE MADE FOR THIS WORK AND THE ENTIRE COST OF THIS WORK SHALL BE INCLUDED IN THE UNIT CONTRACT PRICE BID FOR THE SEVERAL PAY ITEMS.

**TEMPORARY DRAINAGE AT END BENT**

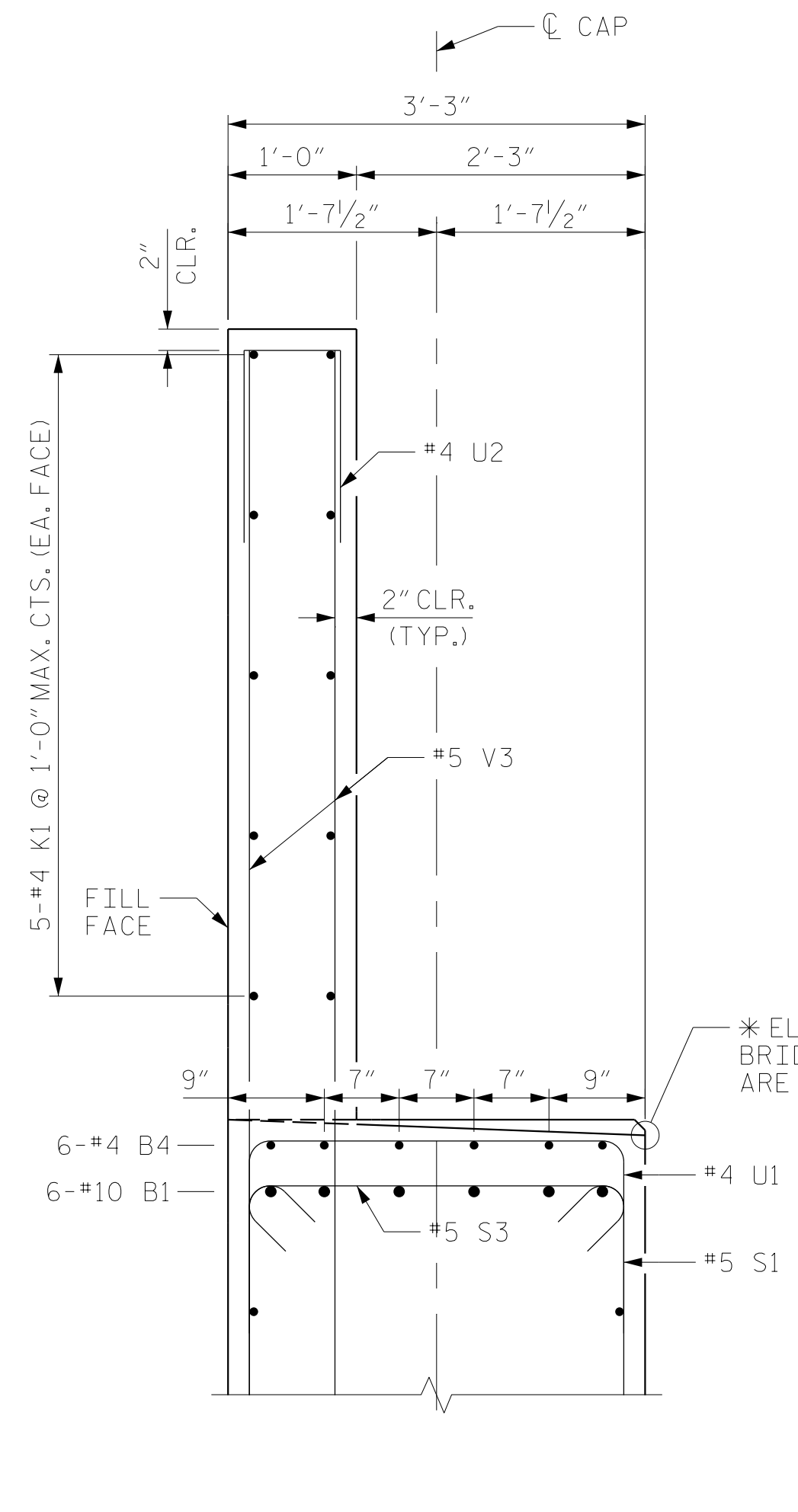
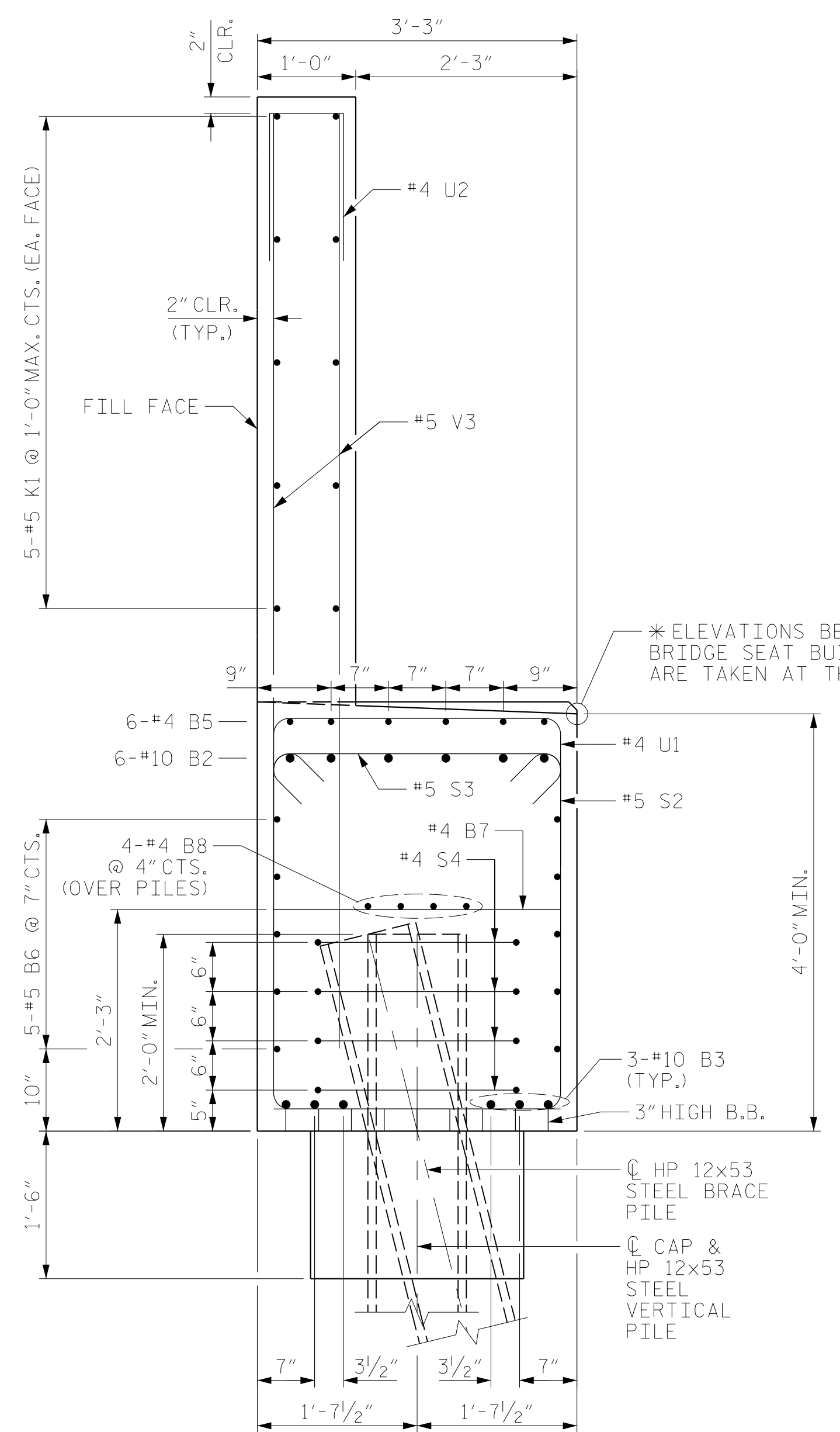


**PILE SPLICE DETAILS**



ALL BAR DIMENSIONS ARE OUT TO OUT

BILL OF MATERIAL					
END BENT NO. 1					
BAR	NO.	SIZE	TYPE	LENGTH	WEIGHT
B1	6	#10	1	17'-8"	456
B2	6	#10	1	34'-4"	886
B3	6	#10	2	40'-10"	1054
B4	6	#4	STR	7'-3"	29
B5	6	#4	STR	11'-5"	46
B6	10	#5	STR	38'-0"	396
B7	10	#4	STR	2'-11"	19
B8	4	#4	STR	38'-0"	102
H1	24	#4	7	16'-2"	259
H2	40	#6	7	14'-2"	851
K1	10	#5	STR	38'-0"	396
K2	8	#4	STR	3'-0"	16
S1	18	#5	3	12'-7"	236
S2	34	#5	3	11'-1"	393
S3	52	#5	4	3'-10"	208
S4	28	#4	5	6'-6"	122
S5	3	#6	8	11'-1"	50
S6	3	#6	9	5'-3"	24
U1	18	#4	6	6'-11"	83
U2	32	#4	6	3'-8"	78
V1	38	#5	STR	11'-0"	436
V2	34	#5	STR	9'-9"	346
V3	64	#5	STR	8'-0"	534
REINFORCING STEEL					7,020 LBS.
CLASS A CONCRETE					
POUR #1					
CAP, COLLAR & LOWER PART OF WING & BACKWALL					27.5 C.Y.
POUR #2					
UPPER PART OF WING & BACKWALL					13.4 C.Y.
TOTAL CLASS A CONCRETE					40.9 C.Y.
HP 12 X 53 STEEL PILES					
NO. 8					520 LIN. FT.
PILE DRIVING EQUIPMENT SETUP					8 EA.
PILE REDRIVES					5 EA.



DRAWN BY : MRA DATE : 04/2019  
 CHECKED BY : JMR DATE : 06/2019  
 DESIGN ENGINEER OF RECORD: MAL DATE : 06/2019

DOCUMENT NOT CONSIDERED FINAL UNLESS ALL SIGNATURES COMPLETED

RS&H Architects-Engineers-Planners, Inc.  
 8521 Six Forks Road, Suite 400  
 919-926-4100 FAX 919-846-9080  
 www.rsandh.com  
 North Carolina License No. 00737-5403-C&E

PROJECT NO. B-4484  
 CRAVEN COUNTY  
 STATION: 25+06.00 -L1-

SHEET 3 OF 3 REPLACES BRIDGE NO. 240138

STATE OF NORTH CAROLINA DEPARTMENT OF TRANSPORTATION RALEIGH					
SUBSTRUCTURE					
END BENT 1 DETAILS					
REVISIONS					
NO.	BY:	DATE:	NO.	BY:	DATE:
1			3		
2			4		

SHEET NO.		S1-28
TOTAL SHEETS		37