

PLAN

* 89°-10'-11" (TO SHORT CHORD)

NOTES

STIRRUPS AND U1 BARS IN CAP MAY BE SHIFTED, AS NECESSARY, TO CLEAR ANCHOR BOLTS.

FOR SECTION A-A AND PARTIAL SECTION B-B, SEE SHEET 3 OF 3.

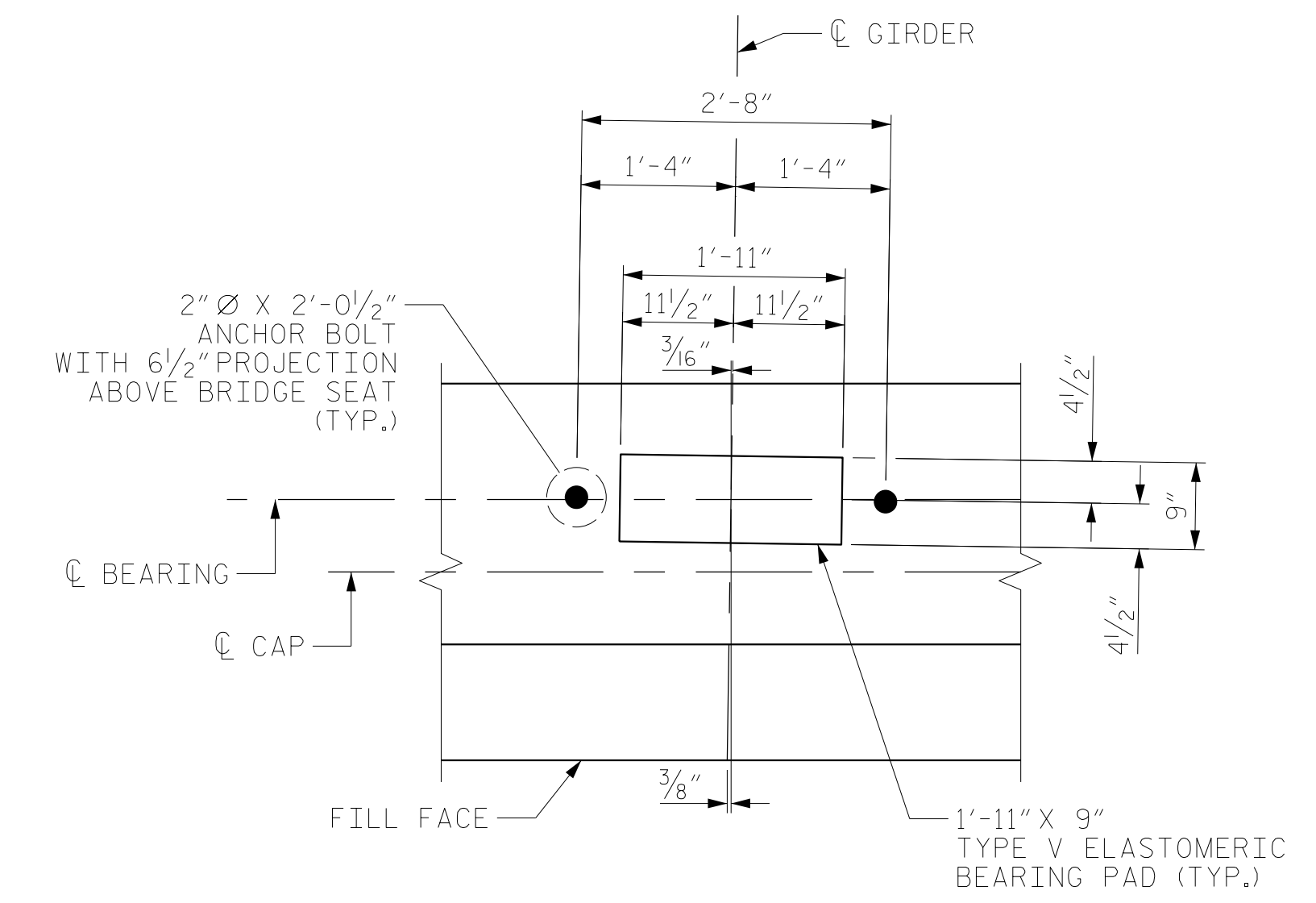
BACKWALL SHALL BE PLACED BEFORE APPLYING THE EPOXY PROTECTIVE COATING.

THE TOP SURFACE OF THE END BENT CAP SHALL BE CURED IN ACCORDANCE WITH THE STANDARD SPECIFICATIONS, EXCEPT THE MEMBRANE CURING COMPOUND METHOD SHALL NOT BE USED.

THE TOP SURFACE AREAS OF THE END BENT CAP EXCEPT THE BRIDGE SEAT BUILDUPS SHALL BE SLOPED TRANSVERSELY FROM THE FILL FACE TO THE BACK FACE AT THE RATE OF 2%.

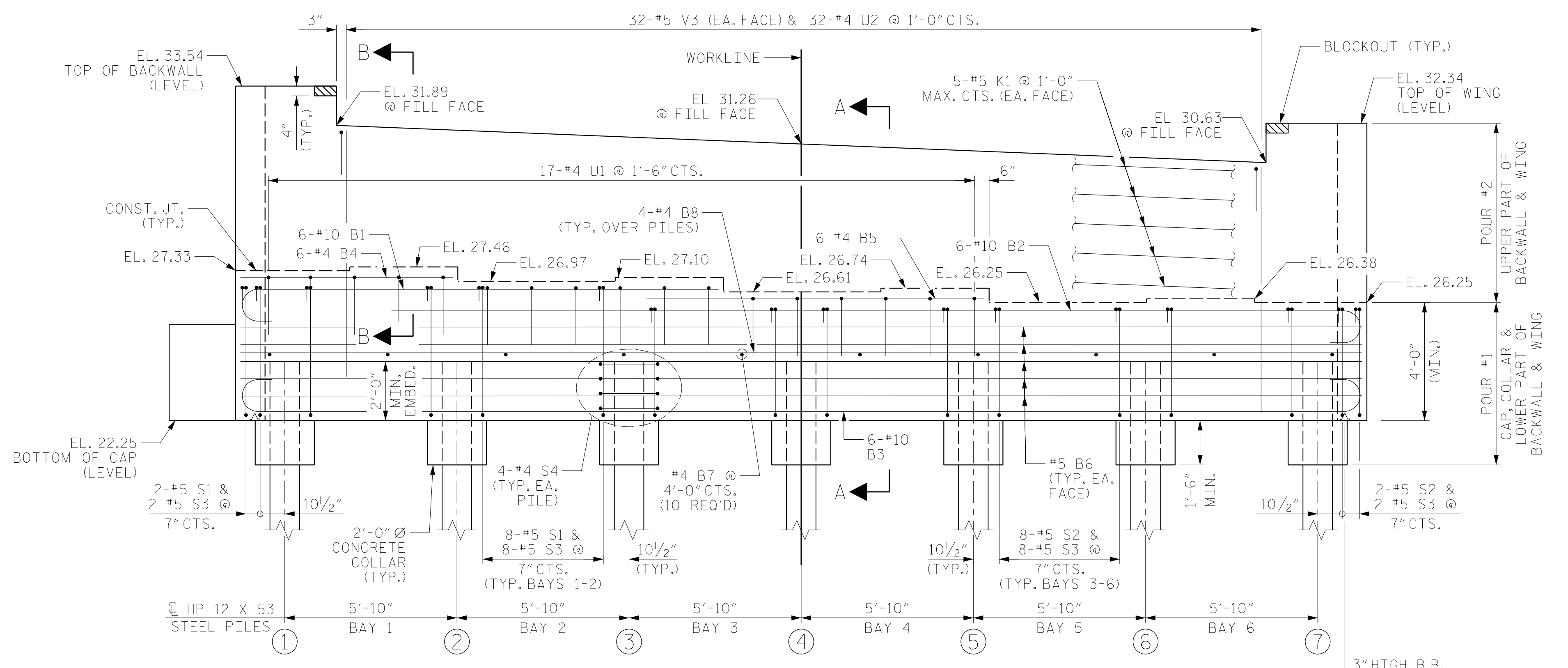
THE CONCRETE IN THE SHADED AREA OF THE WING SHALL BE POURED AFTER THE CONCRETE BARRIER IS CAST IF SLIP FORMING IS USED.

↑ INDICATES BATTERED PILE.



DETAIL "A"

DIMENSIONS TYPICAL FOR EACH BEARING. PILES NOT SHOWN FOR CLARITY



ELEVATION

GIRDER ANGLES	
GIRDER	ANGLE "A"
1	89°-10'-22"
2	89°-10'-15"
3	89°-10'-07"
4	89°-09'-59"

PROJECT NO. B-4484
CRAVEN COUNTY
 STATION: 25+06.00 -L1-

SHEET 1 OF 3 REPLACES BRIDGE NO. 240138



REVISIONS						SHEET NO.
NO.	BY:	DATE:	NO.	BY:	DATE:	S1-26
1			3			TOTAL SHEETS
2			4			37

DRAWN BY : MRA DATE : 04/2019
 CHECKED BY : JMR DATE : 06/2019
 DESIGN ENGINEER OF RECORD: MAL DATE : 06/2019

DOCUMENT NOT CONSIDERED FINAL UNLESS ALL SIGNATURES COMPLETED