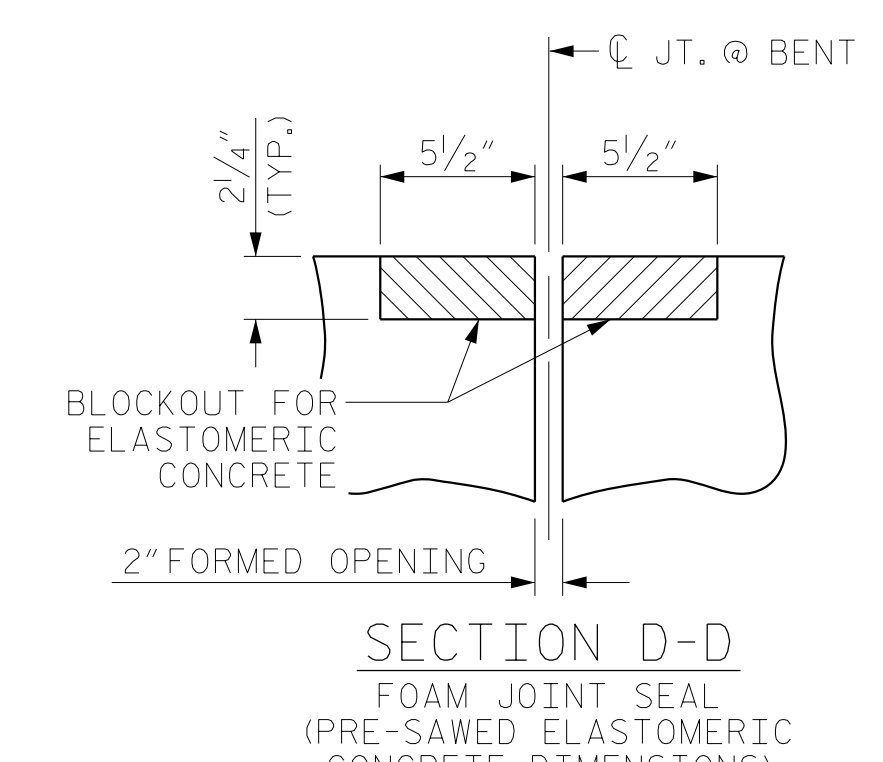
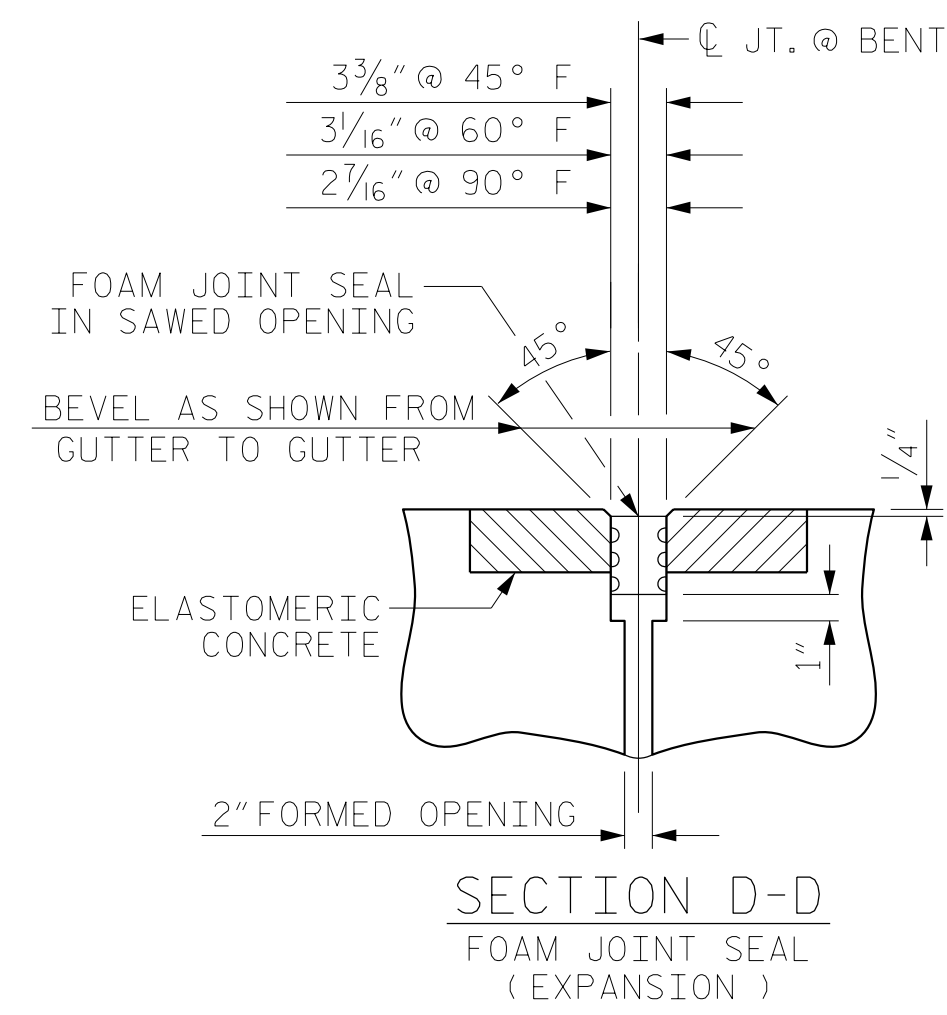
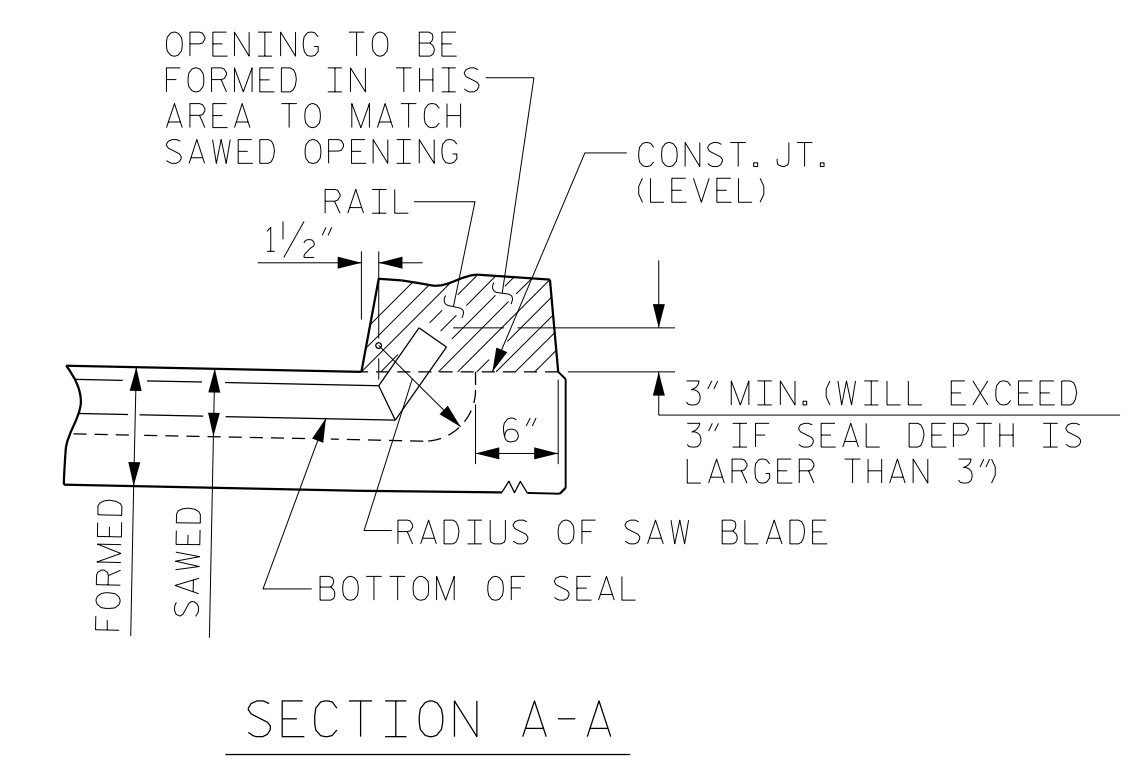
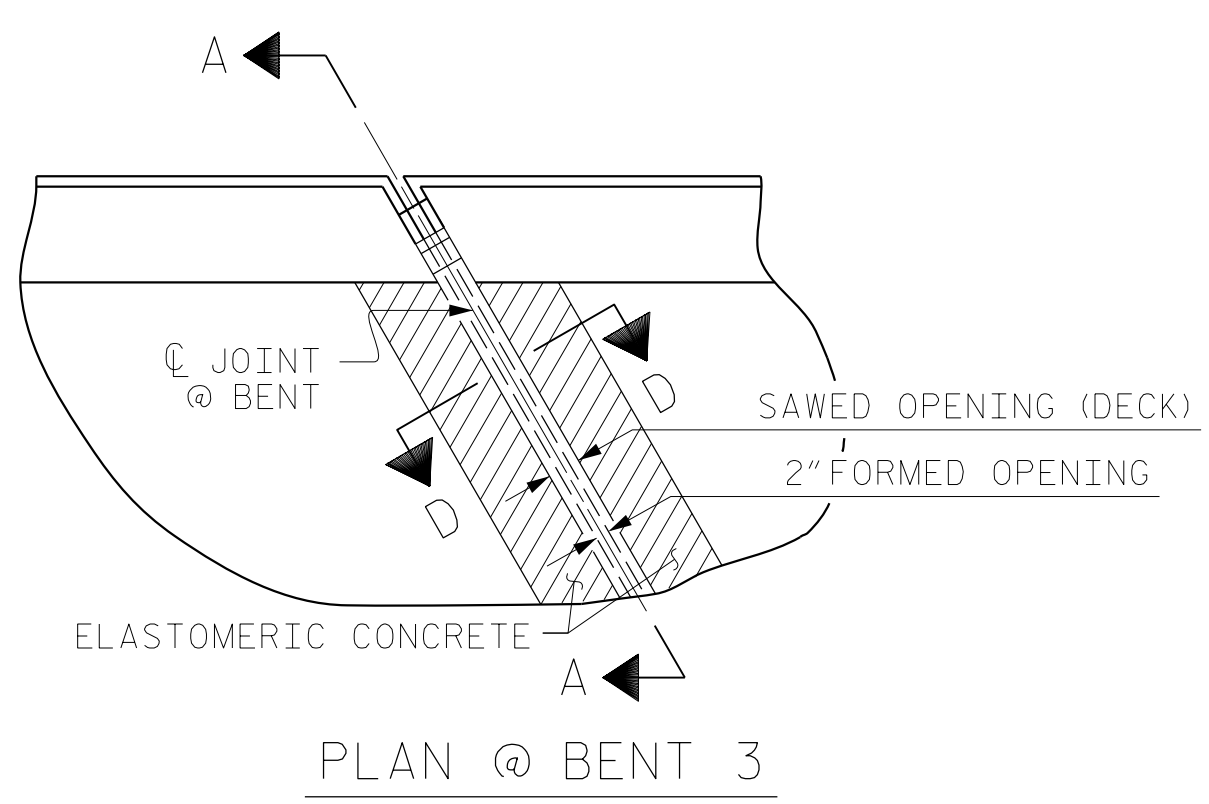


JOINT SEAL DETAILS @ END BENTS

FOAM JOINT SEAL TO BE CUT, HEAT WELDED AND TURNED UP PARALLEL TO SLOPED FACE OF THE BARRIER RAIL.
 THE JOINT SHALL BE SAWS PRIOR TO THE CASTING OF THE VERTICAL CONCRETE BARRIER RAIL.

ELASTOMERIC CONCRETE	
JOINT LOCATION	ELASTOMERIC CONCRETE * (CU. FT.)
END BENT NO. 1	5.2
BENT NO. 3	5.2
END BENT NO. 2	5.3
TOTAL	15.7

* BASED ON THE MINIMUM BLOCKOUT SHOWN.



JOINT SEAL DETAILS @ BENT 3

FOAM JOINT SEAL TO BE CUT, HEAT WELDED AND TURNED UP PARALLEL TO SLOPED FACE OF THE BARRIER RAIL.
 THE JOINT SHALL BE SAWS PRIOR TO THE CASTING OF THE VERTICAL CONCRETE BARRIER RAIL.

PROJECT NO. B-4484
CRAVEN COUNTY
 STATION: 25+06.00 -L1-

REPLACES BRIDGE NO. 240138

REVISIONS						SHEET NO.
NO.	BY:	DATE:	NO.	BY:	DATE:	S1-24
1			3			TOTAL SHEETS
2			4			37

DRAWN BY :	NSC	DATE :	06/2019
CHECKED BY :	PDS	DATE :	06/2019
DESIGN ENGINEER OF RECORD:	MAL	DATE :	06/2019

DOCUMENT NOT CONSIDERED FINAL UNLESS ALL SIGNATURES COMPLETED