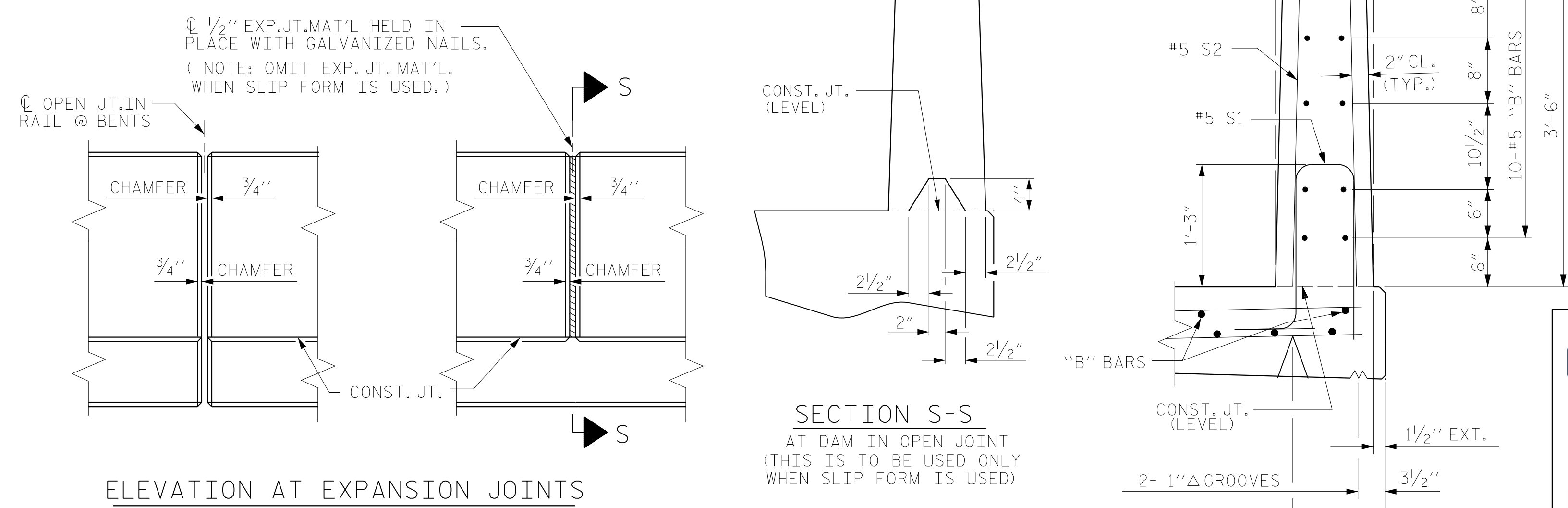
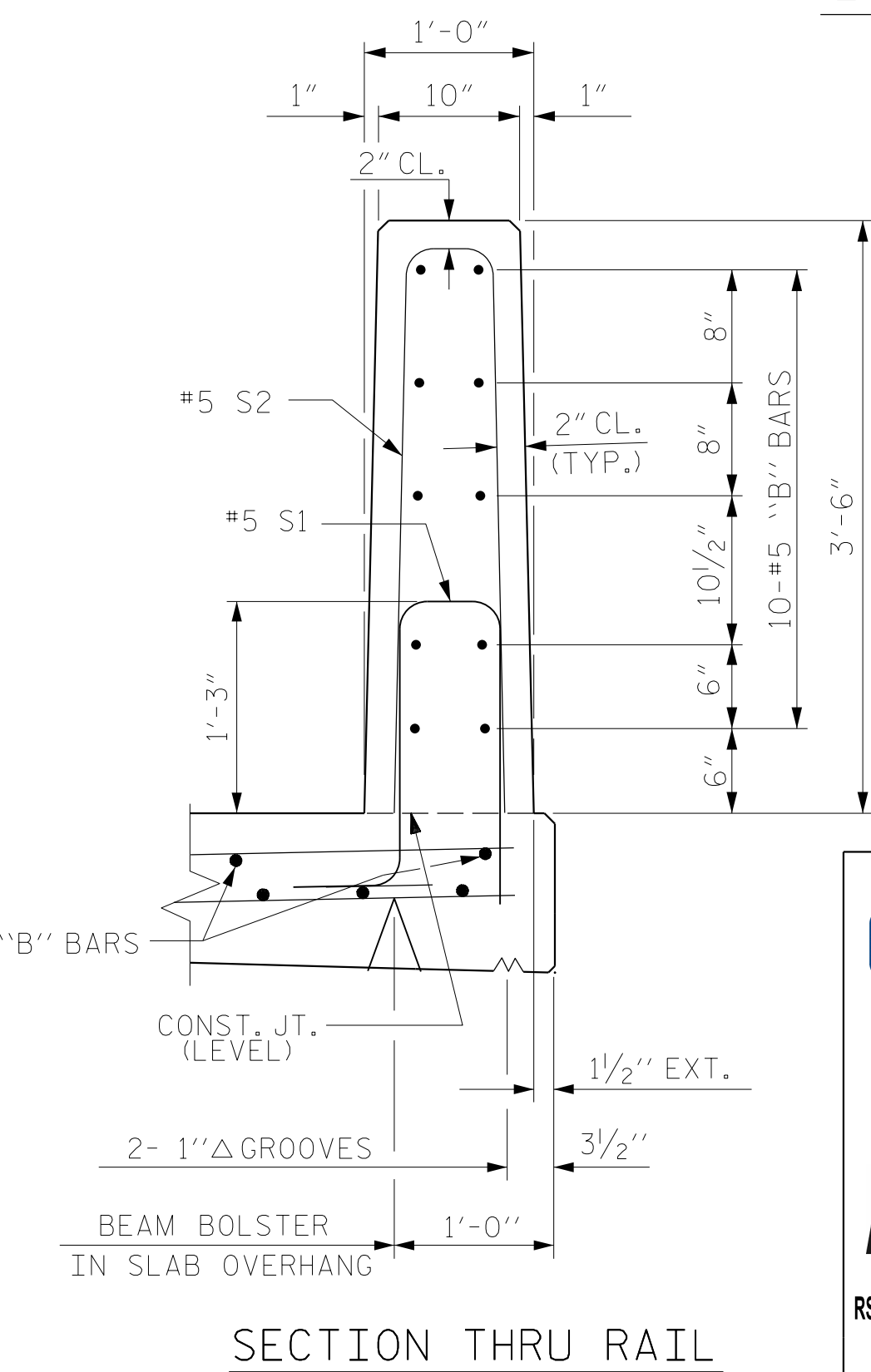


END OF RAIL DETAILS
FOR ADHESIVE ANCHORING AT SAWED JOINTS



BARRIER RAIL DETAILS



SECTION THRU RAIL

BAR TYPES					
1					
2					
ALL BAR DIMENSIONS ARE OUT TO OUT					
BILL OF MATERIAL					
FOR VERTICAL CONCRETE BARRIER RAIL ONLY					
BAR NO.	SIZE	TYPE	LENGTH	WEIGHT	
* B1	440	#5 STR	24'-6"	11244	
* B2	40	#5 STR	23'-4"	973	
* S1	1180	#5	1	4'-11"	6051
* S2	1180	#5	2	7'-2"	8820
* S3	48	#5 STR	4'-0"	200	
* S4	32	#5 STR	3'-6"	117	
* EPOXY COATED REINFORCING STEEL				27,405 LBS.	
CLASS AA CONCRETE				142.9 CU. YDS.	
VERTICAL CONCRETE BARRIER RAIL				1,195.30 LIN. FT.	

NOTES

THE BARRIER RAIL IN EACH SPAN SHALL NOT BE CAST UNTIL ALL SLAB CONCRETE IN THAT SPAN HAS BEEN CAST AND HAS REACHED A MINIMUM COMPRESSIVE STRENGTH OF 3,000 PSI.

WHEN FOAM JOINT SEAL IS REQUIRED, THE JOINT IN THE DECK SHALL BE SAWED PRIOR TO THE CASTING OF VERTICAL CONCRETE BARRIER RAIL.

ALL REINFORCING STEEL IN BARRIER RAILS SHALL BE EPOXY COATED.

THE #5 S3 & S4 BARS SHALL BE INSTALLED, USING AN ADHESIVE ANCHORING SYSTEM, AFTER SAWING THE JOINT. THE YIELD LOAD FOR THE #5 S3 & S4 BARS IS 18.6 KIPS. FIELD TESTING FOR THE ADHESIVE BONDING SYSTEM IS NOT REQUIRED.

GROOVED CONTRACTION JOINTS, 1/2" IN DEPTH, SHALL BE TOOLED IN ALL EXPOSED FACES OF THE BARRIER RAIL AND IN ACCORDANCE WITH ARTICLE 825-10(B) OF THE STANDARD SPECIFICATIONS. THE CONTRACTION JOINT SHALL BE LOCATED AT EACH THIRD POINT BETWEEN BARRIER RAIL EXPANSION JOINTS. ONLY ONE CONTRACTION JOINT IS REQUIRED AT MIDPOINT OF BARRIER RAIL SEGMENTS LESS THAN 20 FEET IN LENGTH AND NO CONTRACTION JOINTS ARE REQUIRED FOR THOSE SEGMENTS LESS THAN 10 FEET IN LENGTH.

PROJECT NO. B-4484
CRAVEN COUNTY
 STATION: 25+06.00 -L1-



REVISIONS		SHEET NO.
NO.	BY:	DATE:
1		
2		
TOTAL SHEETS		37

DOCUMENT NOT CONSIDERED FINAL UNLESS ALL SIGNATURES COMPLETED		
ASSEMBLED BY : TWL	DATE : 05/2019	MAA/GM
CHECKED BY : JMR	DATE : 06/2019	MAA/THC
DRAWN BY : MAA 5/10	REV. 6/13	MAA/THC
CHECKED BY : GM 5/10	REV. 12/17	MAA/THC
	REV. 5/18	MAA/THC