

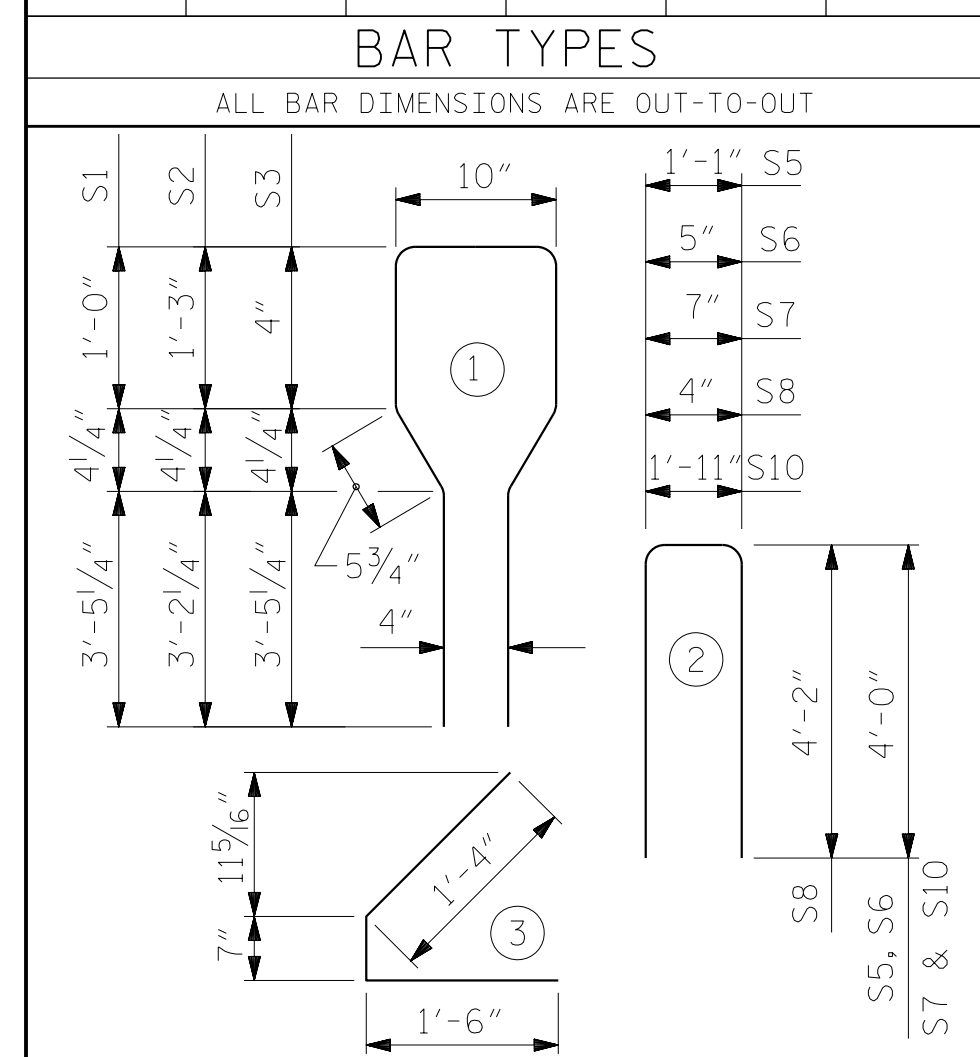
- DEBONDING LEGEND**
- FULLY BONDED STRANDS
  - ▲ STRANDS DEBONDED FOR 5'-0" FROM END OF GIRDER
  - STRANDS DEBONDED FOR 7'-0" FROM END OF GIRDER
  - STRANDS DEBONDED FOR 9'-0" FROM END OF GIRDER

0.6" Ø L. R. GRADE 270 STRANDS

AREA (SQUARE INCHES)	ULTIMATE STRENGTH (LBS. PER STRAND)	APPLIED PRESTRESS (LBS. PER STRAND)
0.217	58,600	43,950

**REINFORCING STEEL FOR ONE GIRDER**

BAR	NUMBER	SIZE	TYPE	LENGTH	WEIGHT
S1	16	#6	1	10'-8"	256
S2	106	#4	1	10'-8"	756
S3	16	#6	1	9'-4"	224
S4	84	#4	3	3'-5"	192
S5	4	#4	2	9'-1"	24
S6	6	#4	2	8'-5"	34
S7	4	#4	2	8'-7"	23
S8	2	#5	2	8'-8"	18
S9	5	#4	STR.	7'-0"	23
S10	2	#4	2	9'-11"	13

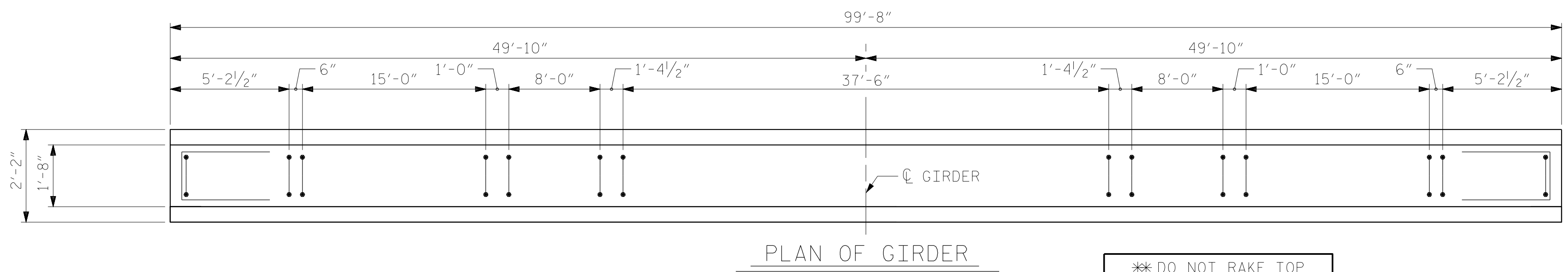


**QUANTITIES FOR ONE GIRDER**

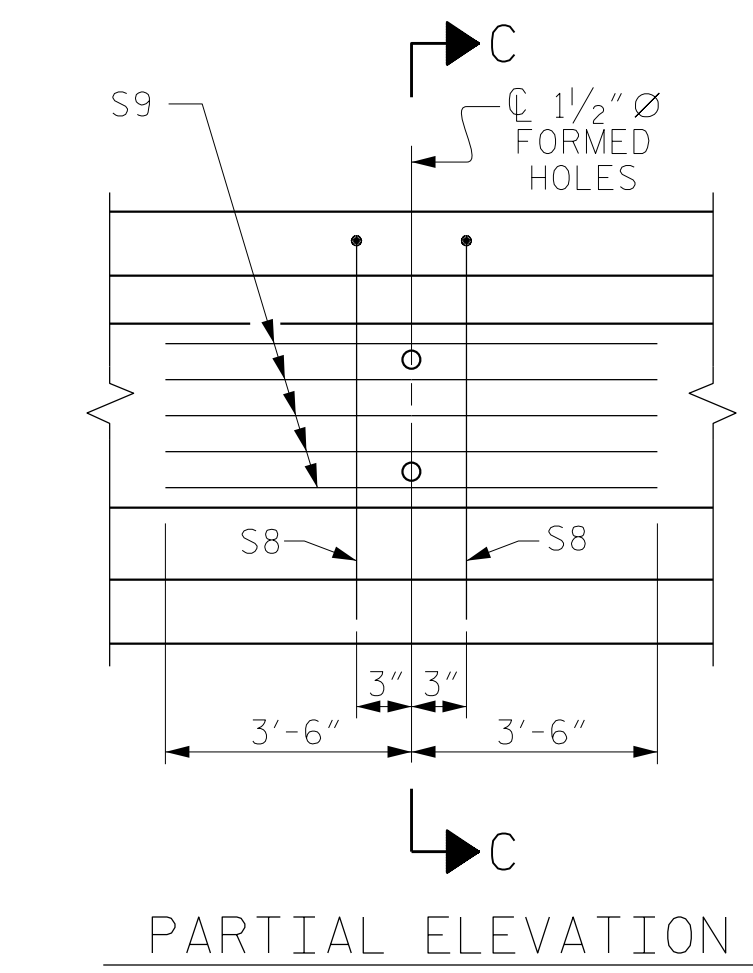
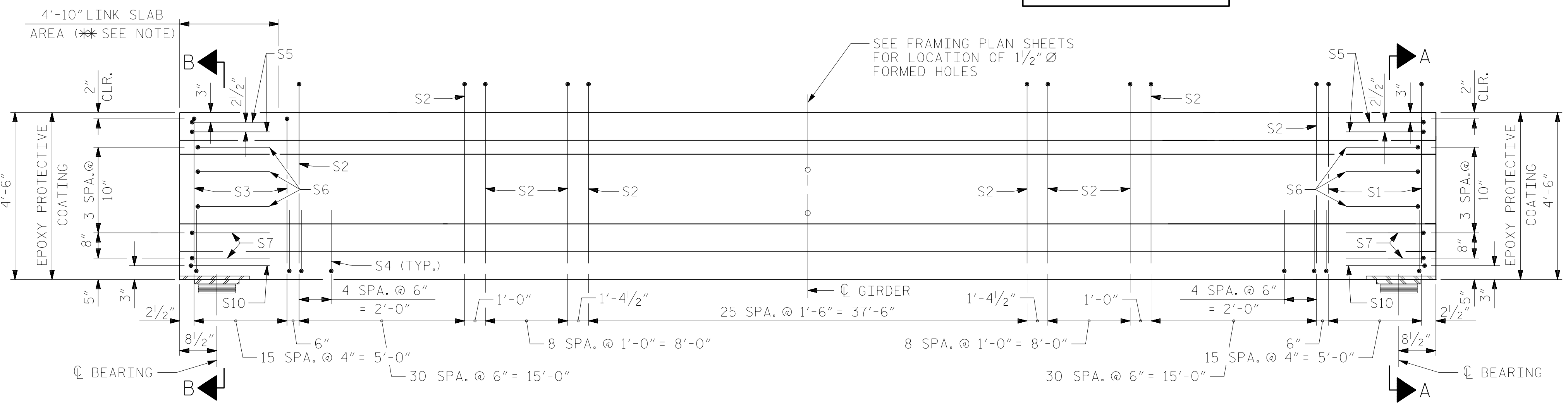
	REINFORCING STEEL	8000 PSI CONCRETE	0.6" Ø L. R. STRANDS
	LB.	C.Y.	No.
SPAN C & D	1,563	20.2	36

**GIRDERS REQUIRED**

NUMBER	LENGTH	TOTAL LENGTH
8	99'-8"	797'-4"



\*\* DO NOT RAKE TOP OF GIRDER IN THIS AREA



PROJECT NO. B-4484  
 CRAVEN COUNTY  
 STATION: 25+06.00 -L1-

SHEET 3 OF 4 REPLACES BRIDGE NO. 240138



STATE OF NORTH CAROLINA  
 DEPARTMENT OF TRANSPORTATION  
 RALEIGH  
 STANDARD  
 AASHTO TYPE IV  
 PRESTRESSED CONCRETE GIRDER  
 SPANS C & D

DRAWN BY : TWL DATE : 06/2019  
 CHECKED BY : JMR DATE : 06/2019  
 DESIGN ENGINEER OF RECORD: MAL DATE : 06/2019

DOCUMENT NOT CONSIDERED FINAL UNLESS ALL SIGNATURES COMPLETED

RS&H Architects-Engineers-Planners, Inc.  
 8521 Six Forks Road, Suite 400  
 919-926-4100 FAX 919-846-9080  
 www.rsandh.com  
 North Carolina License No. 50737-F-0403-1-C-28

**REVISIONS**

NO.	BY:	DATE:	NO.	BY:	DATE:
1			3		
2			4		

SHEET NO. S1-17  
 TOTAL SHEETS 37