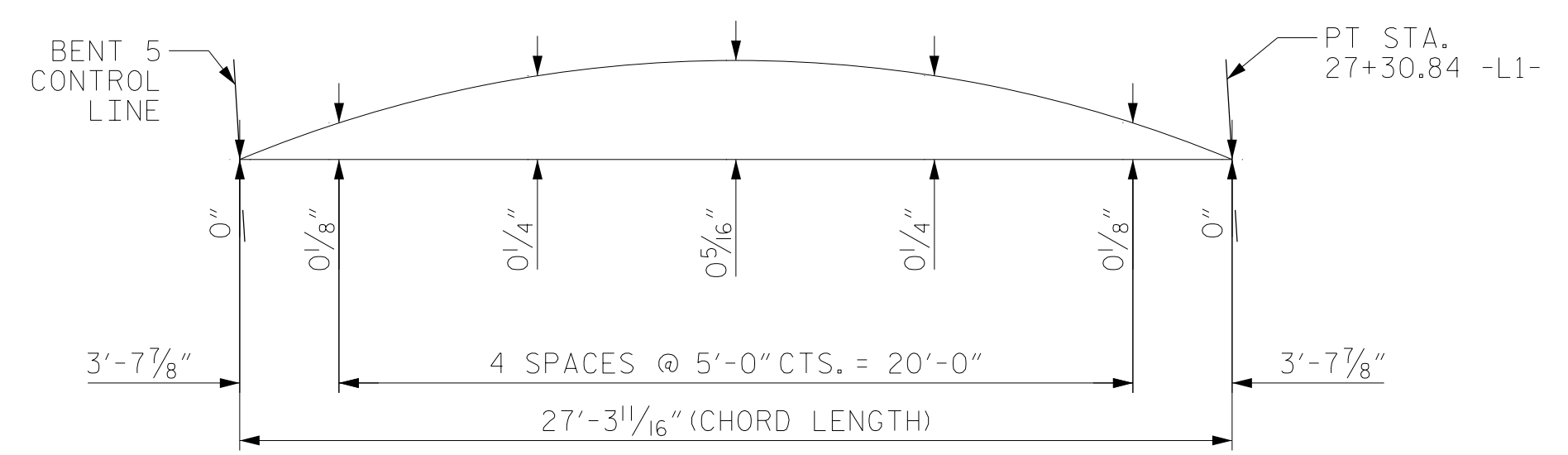
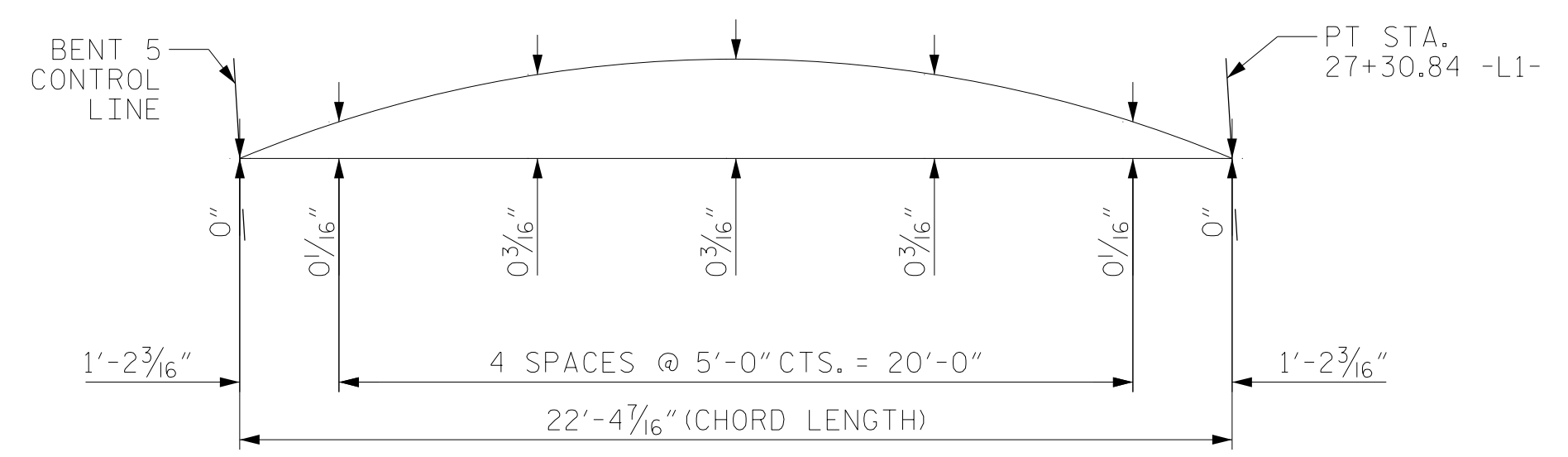


**PART PLAN OF SPAN E AND PLAN OF SPAN F**

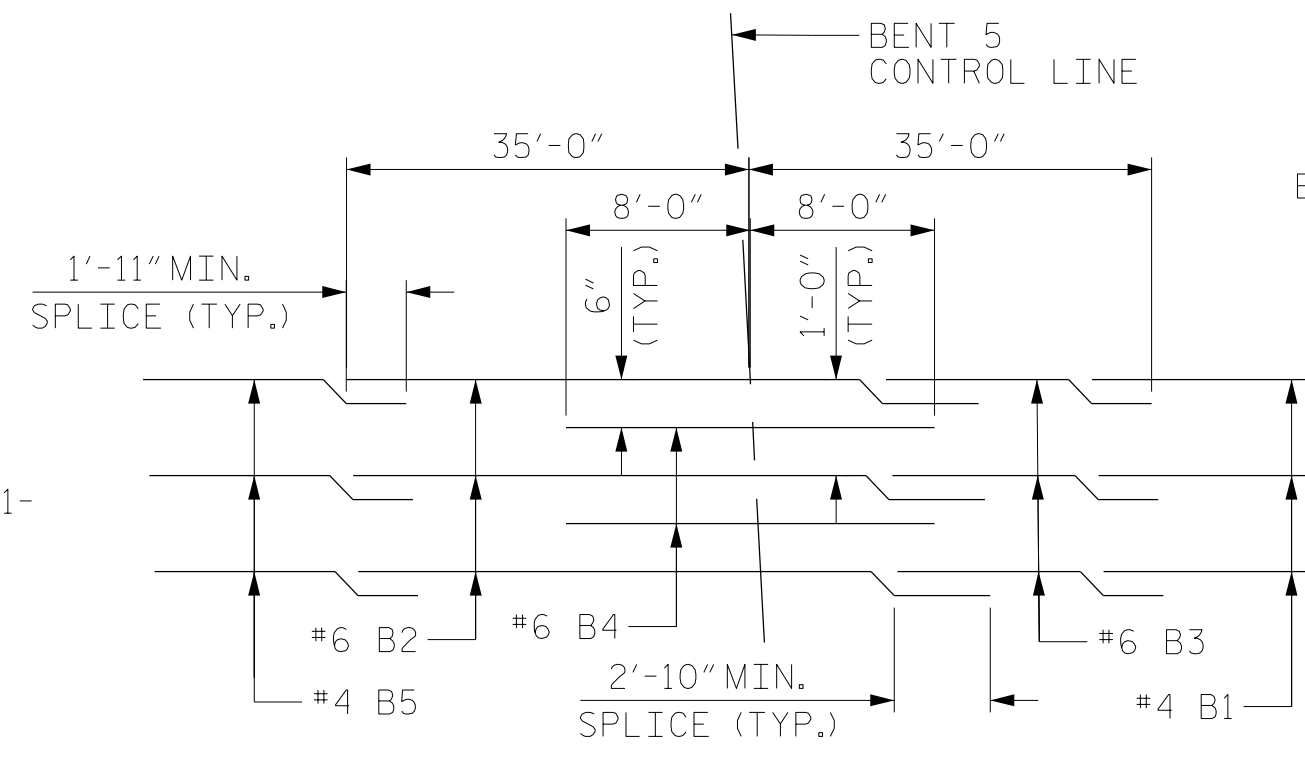
\* DIMENSIONS ARE RADIAL TO  $\phi$ -L1- IN SPAN E AND PART OF SPAN F  
 \*\* 6-#4 S1 AND 6-#5 S2 @ 1'-0" CTS. (TYP. EA. BAY)  
 \*\*\* 81°-29'-24" (TO SHORT CHORD)



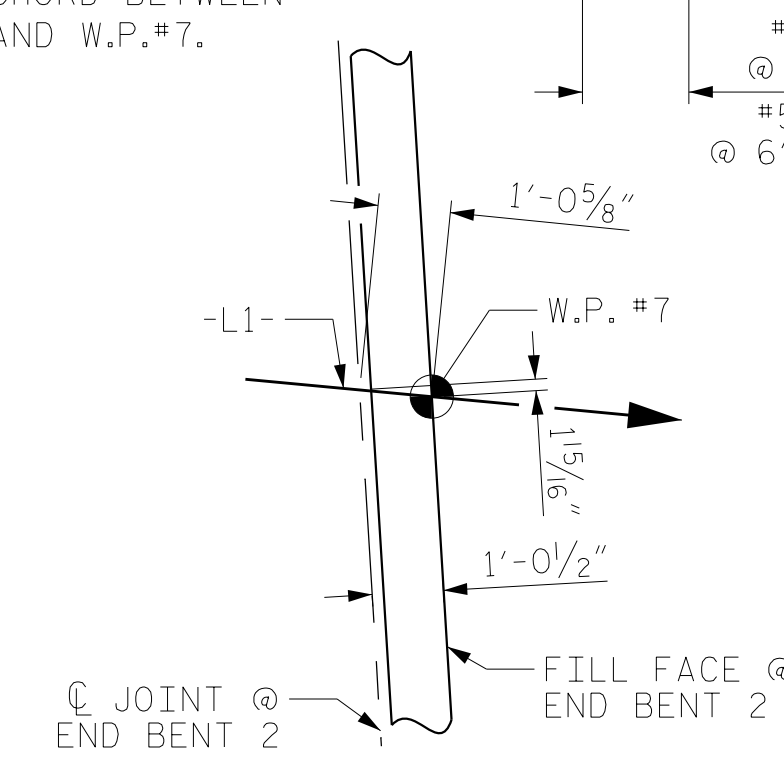
**LEFT SIDE SPAN "F" ARC OFFSETS**



**RIGHT SIDE SPAN "F" ARC OFFSETS**



**TOP OF SLAB REINFORCING STEEL LAYOUT**



**DETAIL "B"**

**NOTES**

- FOR SPLICE LENGTHS NOT SHOWN, REFER TO MINIMUM SPLICE LENGTH TABLE ON "SUPERSTRUCTURE BILL OF MATERIAL" SHEET.
- FOR END BENT DIAPHRAGM BARS AND BENT DIAPHRAGM BARS, SEE "TYPICAL SECTION DETAILS" SHEET.
- STEEL INTERMEDIATE DIAPHRAGMS NOT SHOWN FOR CLARITY. FOR LOCATIONS, SEE "FRAMING PLAN" SHEETS.
- FOR BARRIER RAIL REINFORCING STEEL, SEE "VERTICAL CONCRETE BARRIER RAIL" SHEETS.
- FOR POURING SEQUENCE, SEE "SUPERSTRUCTURE BILL OF MATERIAL" SHEET.
- #5 "A" BARS ARE SPACED PERPENDICULAR TO THE CHORD BETWEEN W.P. #4 TO W.P. #7 (SPANS D-F).

PROJECT NO. B-4484  
 CRAVEN COUNTY  
 STATION: 25+06.00 -L1-

SHEET 4 OF 4 REPLACES BRIDGE NO. 240138



STATE OF NORTH CAROLINA  
 DEPARTMENT OF TRANSPORTATION  
 RALEIGH  
 SUPERSTRUCTURE  
 PART PLAN OF SPAN E  
 PLAN OF SPAN F

REVISIONS						SHEET NO.
NO.	BY:	DATE:	NO.	BY:	DATE:	S1-12
1			3			TOTAL SHEETS
2			4			37

DOCUMENT NOT CONSIDERED FINAL UNLESS ALL SIGNATURES COMPLETED

DRAWN BY : NSC DATE : 04/2019  
 CHECKED BY : JMR DATE : 06/2019  
 DESIGN ENGINEER OF RECORD: PDS DATE : 06/2019