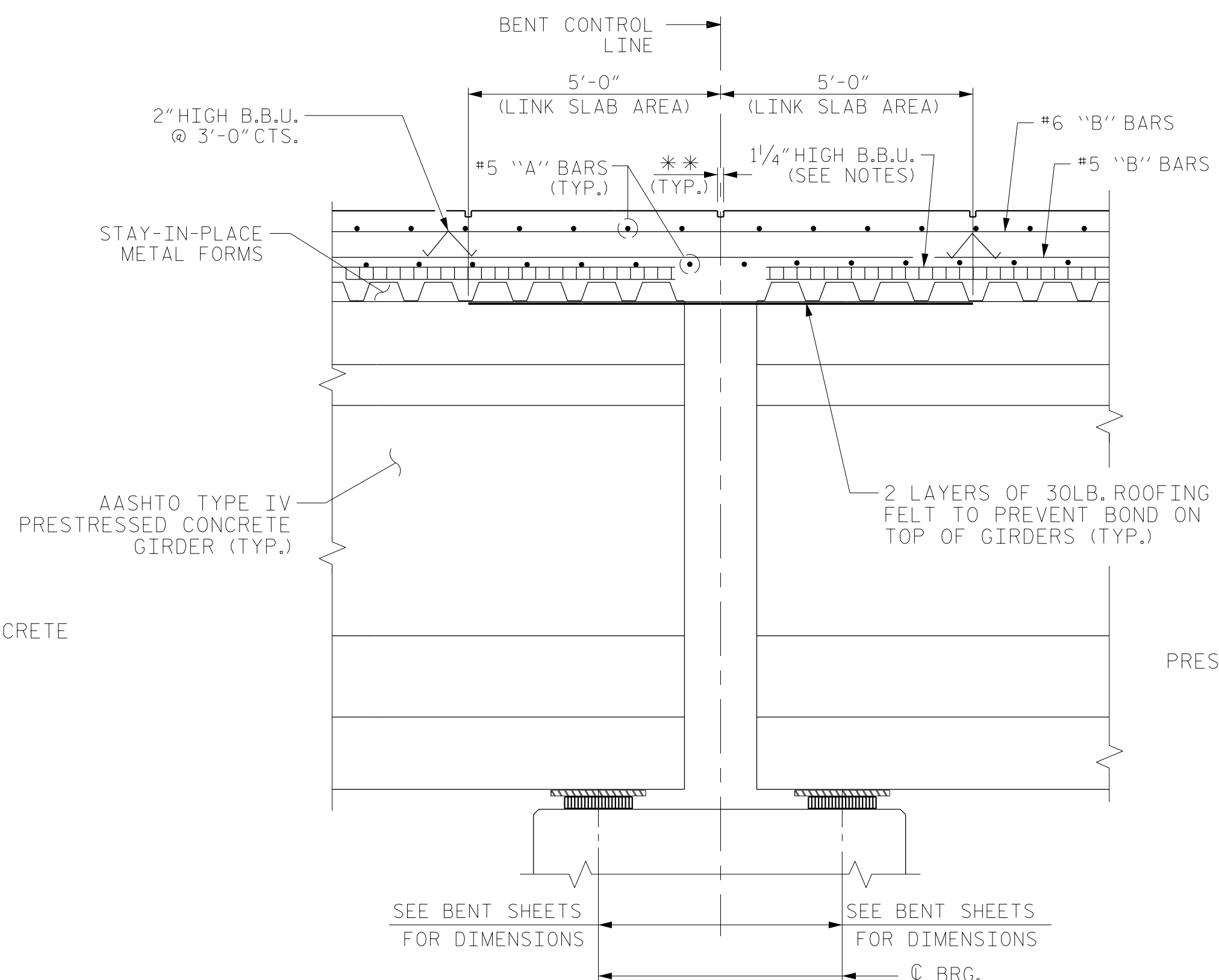


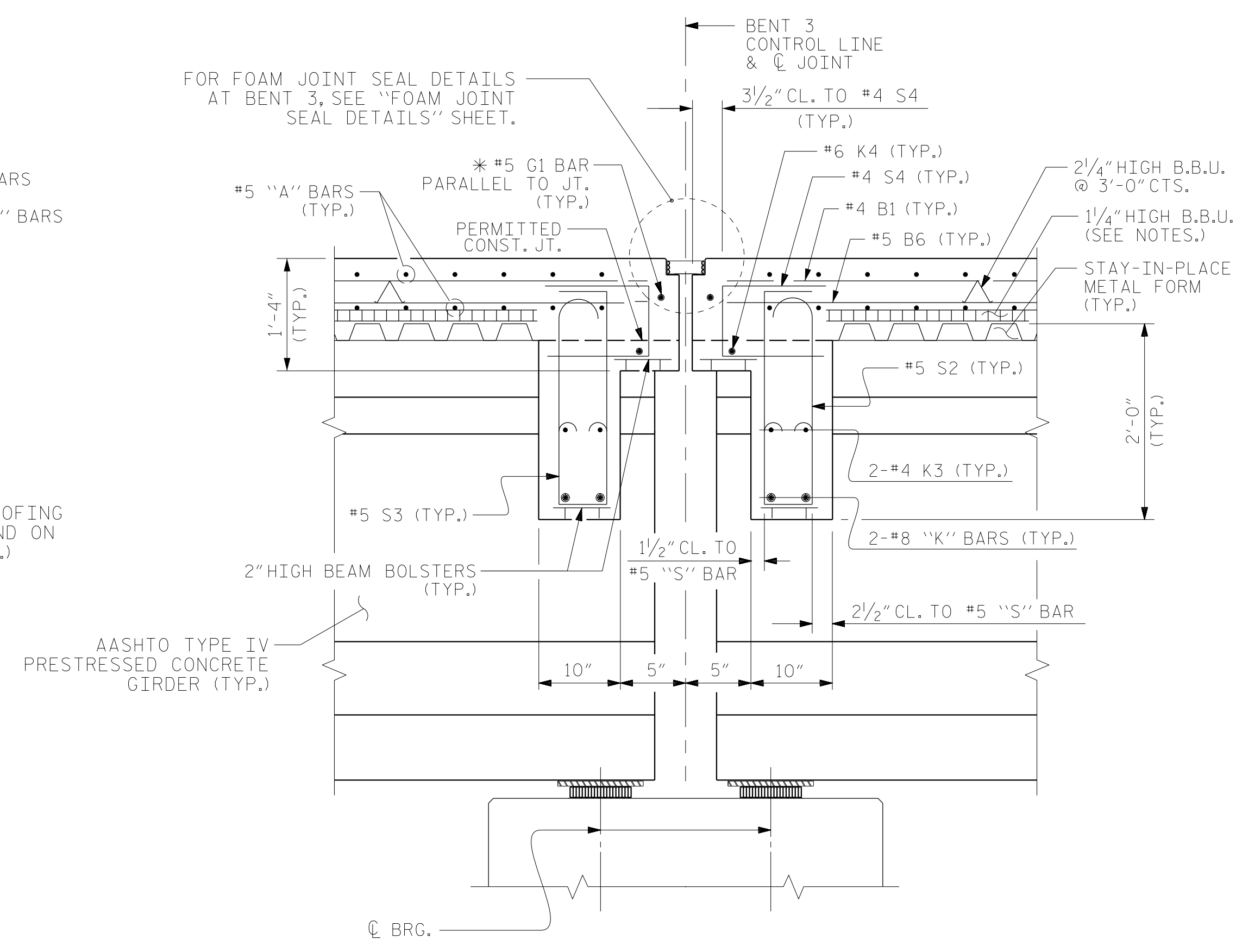
SECTION AT END BENT DIAPHRAGM

* G1 BAR MAY BE SHIFTED SLIGHTLY, AS NECESSARY, TO CLEAR REINFORCING STEEL & STIRRUPS. END BENT 1 SHOWN, END BENT 2 SIMILAR



SECTION AT BENT 1, 2, 4, AND 5 LINK SLAB

** A 1 1/2" DEEP X 3/8" WIDE CONTRACTION JOINT AT BENT CONTROL LINE, SHALL BE SAWN WITHIN 24 HOURS OF POURING THE DECK. THE JOINT SHALL BE FILLED WITH JOINT SEALER MATERIAL. THE JOINT SEALER MATERIAL SHALL CONFORM TO THE REQUIREMENTS OF TYPE B LOW MODULUS SILICONE SEALANT, SEE SECTION 1028 OF THE STANDARD SPECIFICATION.

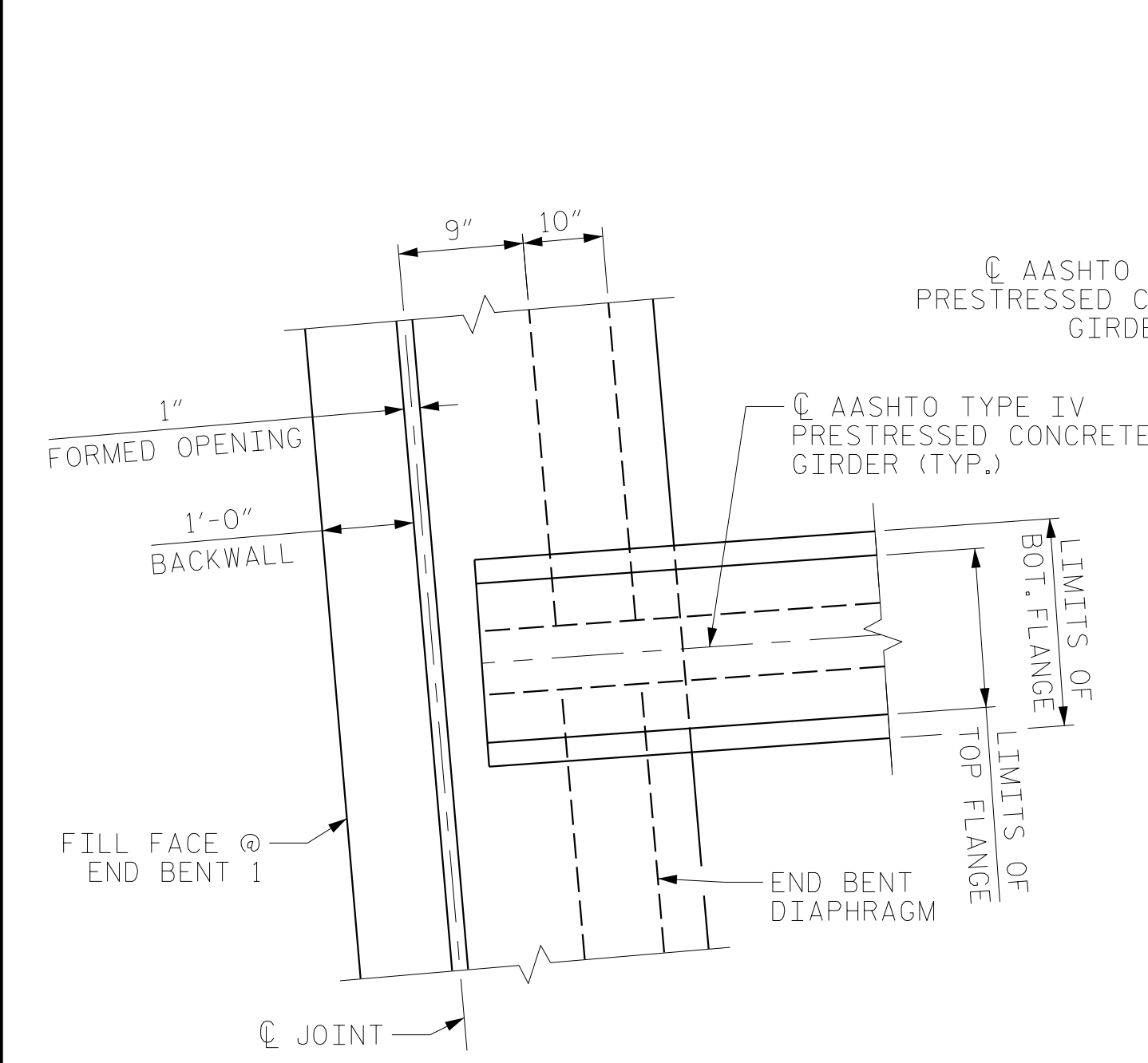


SECTION AT BENT 3 DIAPHRAGM

* G1 BAR MAY BE SHIFTED SLIGHTLY, AS NECESSARY, TO CLEAR REINFORCING STEEL & STIRRUPS.

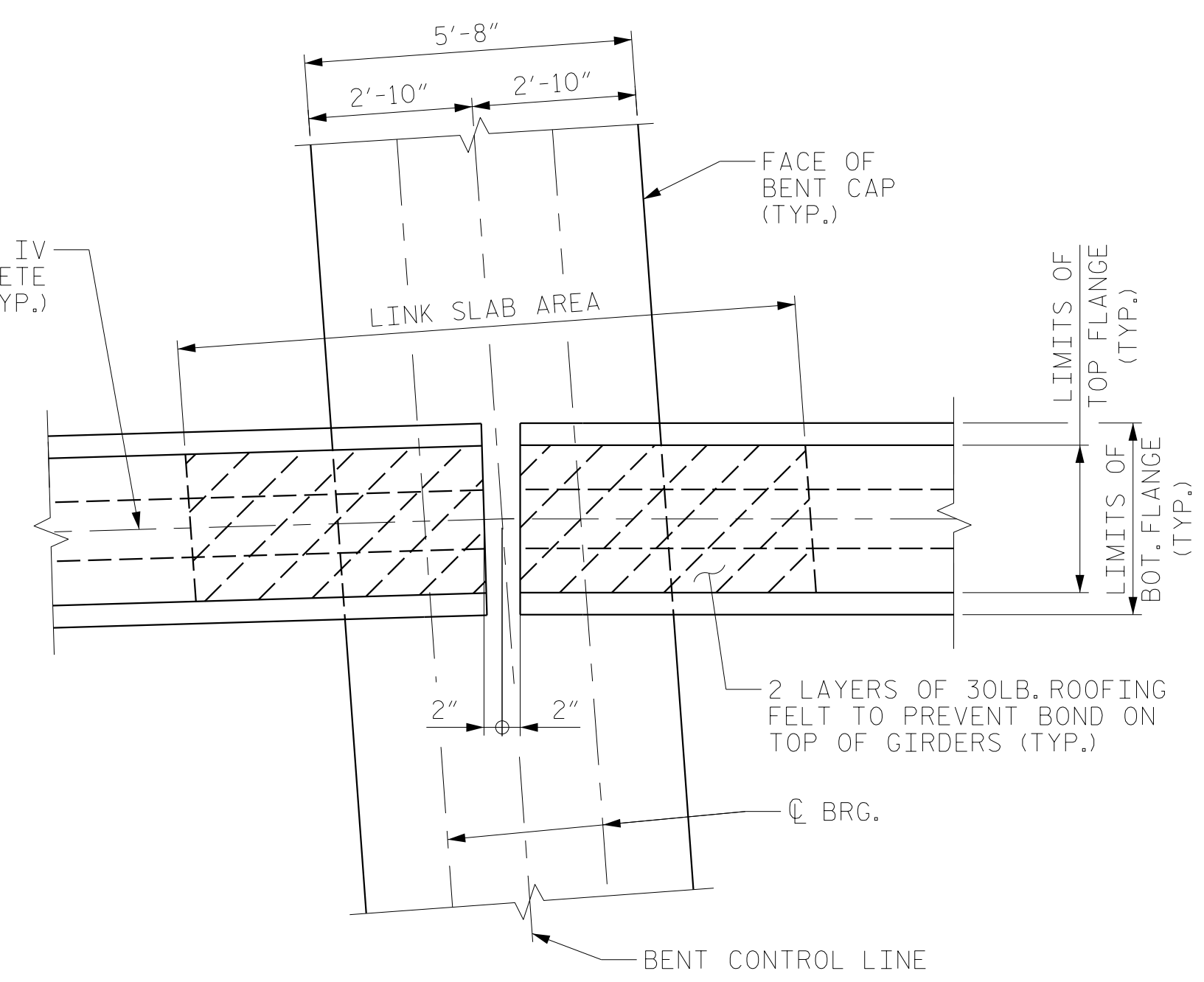
NOTE

FOR NOTES, SEE SHEET 1 OF 2.

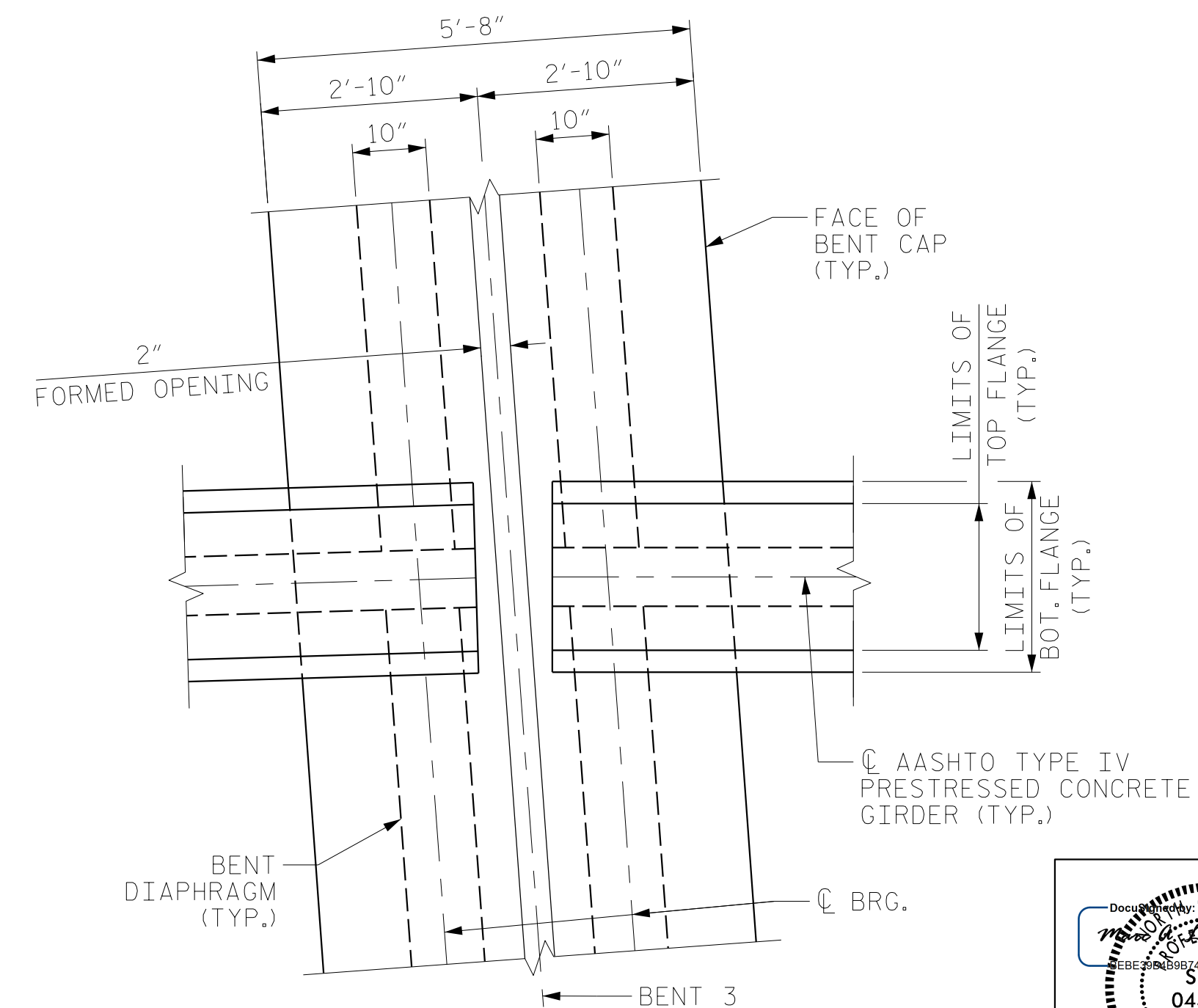


PLAN OF END BENT DIAPHRAGM

END BENT 1 SHOWN, END BENT 2 SIMILAR



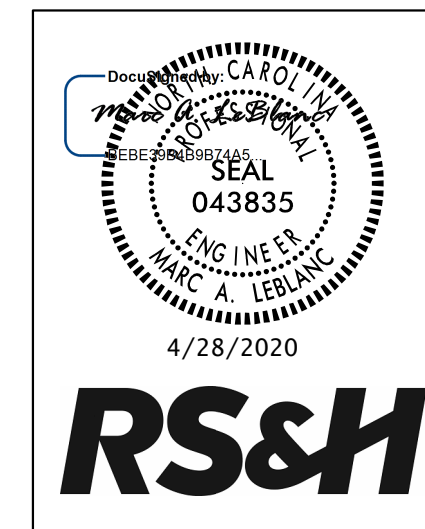
PLAN OF LINK SLAB



PLAN OF BENT 3 DIAPHRAGM

PROJECT NO. B-4484
CRAVEN COUNTY
 STATION: 25+06.00 -L1-

SHEET 2 OF 2 REPLACES BRIDGE NO. 240138



RS&H
 RS&H Architects-Engineers-Planners, Inc.
 8521 Six Forks Road, Suite 400
 919-926-4100 FAX 919-846-9080
 www.rsandh.com
 North Carolina License No. 50737-F-0403-C-28

STATE OF NORTH CAROLINA
 DEPARTMENT OF TRANSPORTATION
 RALEIGH
 SUPERSTRUCTURE
 TYPICAL SECTION
 DETAILS

DRAWN BY :	NSC	DATE :	04/2019
CHECKED BY :	JMR	DATE :	06/2019
DESIGN ENGINEER OF RECORD:	PDS	DATE :	06/2019

DOCUMENT NOT CONSIDERED FINAL UNLESS ALL SIGNATURES COMPLETED

REVISIONS						SHEET NO.	
NO.	BY:	DATE:	NO.	BY:	DATE:	1-8	TOTAL SHEETS
1			3				37
2			4				