

TIP PROJECT: B-4484

CONTRACT: C204434

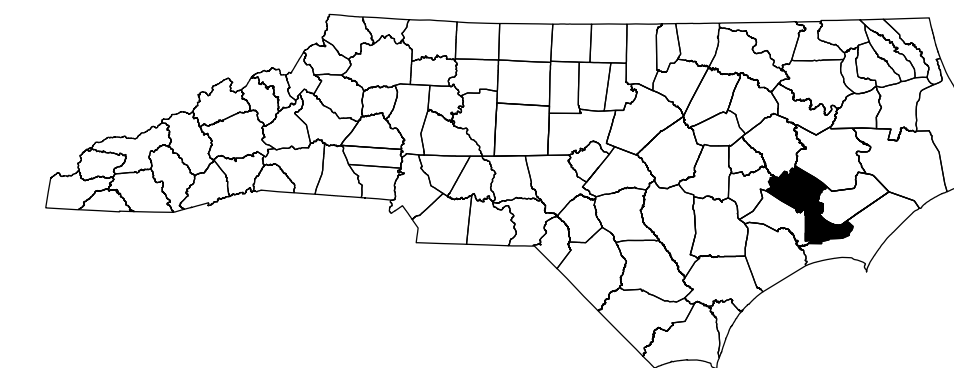
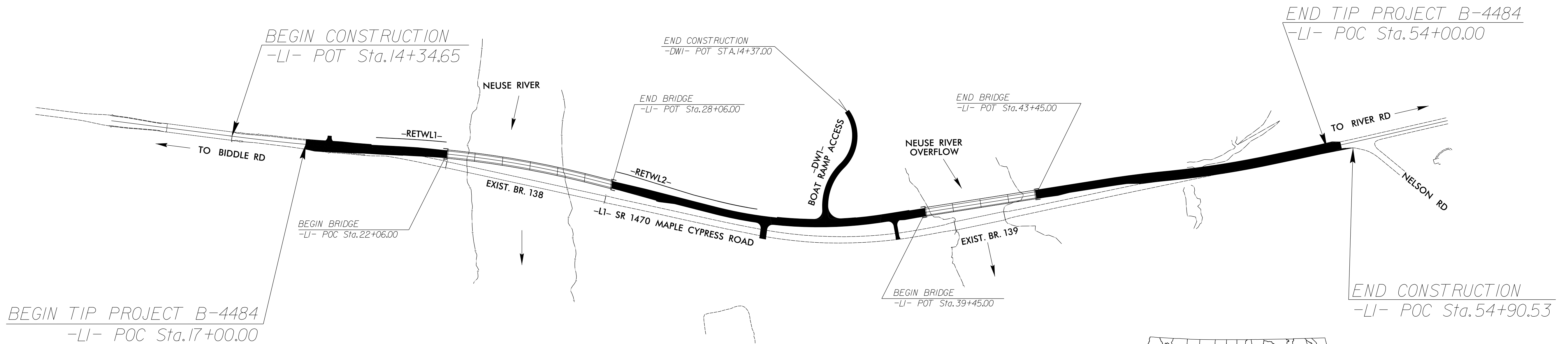
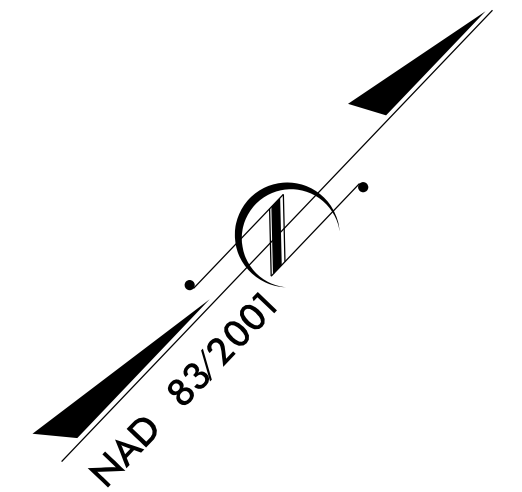
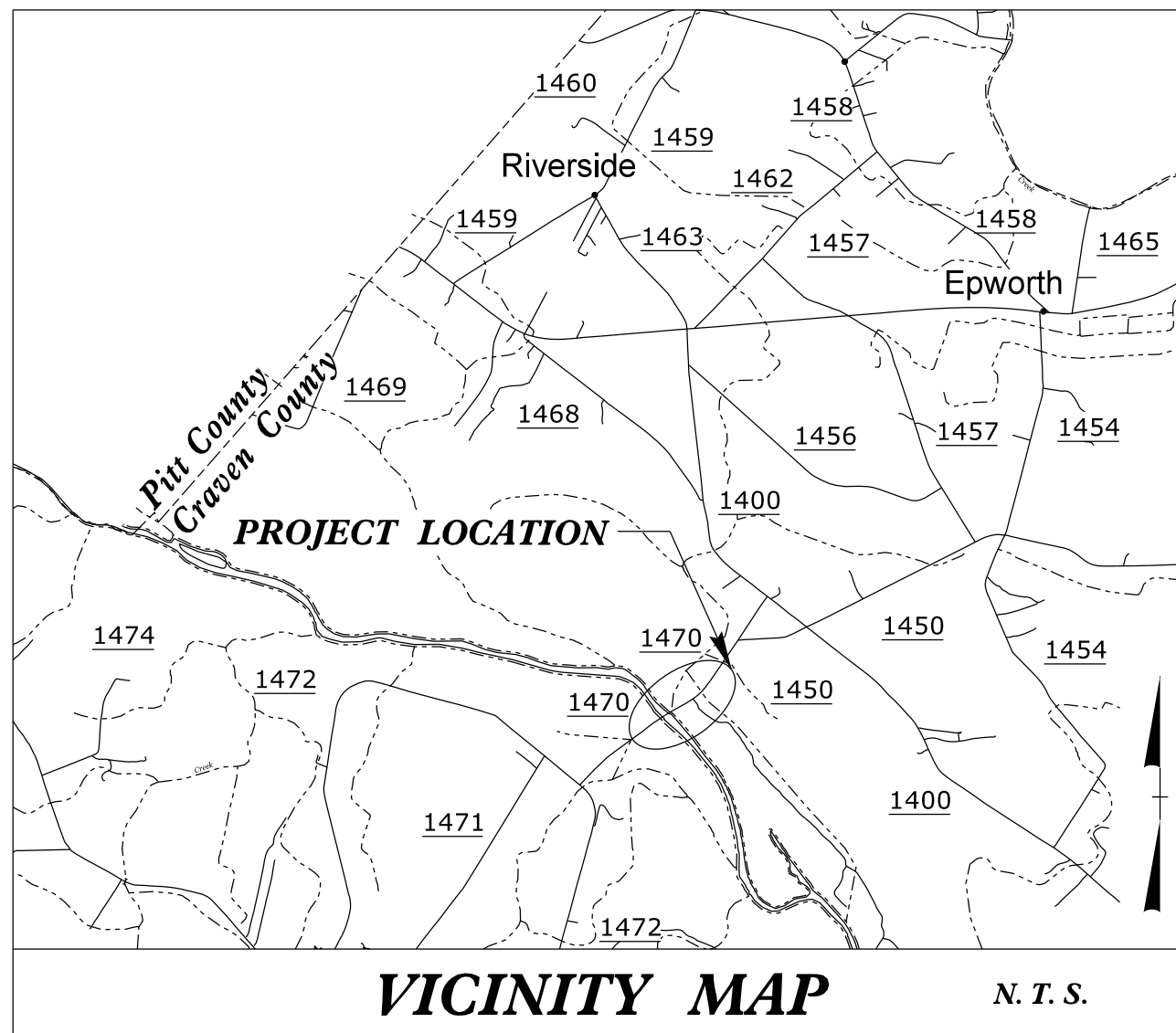
STATE OF NORTH CAROLINA
DIVISION OF HIGHWAYS

CRAVEN COUNTY

LOCATION: REPLACE BRIDGES NO. 138 & 139 OVER NEUSE RIVER AND NEUSE RIVER OVERFLOW ON SR 1470 (MAPLE CYPRESS ROAD)

TYPE OF WORK: GRADING, DRAINAGE, PAVING, RETAINING WALLS, AND STRUCTURES

STATE	STATE PROJECT REFERENCE NO.	SHEET NO.	TOTAL SHEETS
N.C.	B-4484		
STATE PROJ. NO.	F.A. PROJ. NO.	DESCRIPTION	
33723.1.2	N/A	PE	
33723.2.1	N/A	ROW, UTIL	
33723.3.1	N/A	CONST	



STRUCTURES

DOCUMENT NOT CONSIDERED FINAL
UNLESS ALL SIGNATURES COMPLETED

DESIGN DATA

ADT 2020 = 1,884
ADT 2039 = 2,279
K = 12 %
D = 60 %
T = 10 % *
V = 60 MPH
*(TTST = 3% + DUAL = 7%)
FUNC CLASS = MAJOR
COLLECTOR
SUB-REGIONAL TIER

PROJECT LENGTH

LENGTH ROADWAY TIP PROJECT B-4484 = 0.512 MILE
LENGTH STRUCTURE TIP PROJECT B-4484 = 0.189 MILE
TOTAL LENGTH TIP PROJECT B-4484 = 0.701 MILE

PREPARED IN THE OFFICE OF:



1520 SOUTH BOULEVARD, SUITE 200
CHARLOTTE, NC 28203
NC FIRM LICENSE No: F-0493

FOR THE NORTH CAROLINA DEPARTMENT OF TRANSPORTATION
2018 STANDARD SPECIFICATIONS

RIGHT OF WAY DATE:
MARCH 7, 2019

LETTING DATE:
FEBRUARY 16, 2021

STRUCTURES ENGINEER



DocuSigned by:
Marc A. LeBlanc
SIGNATURE:

P.E. 12/8/2020

