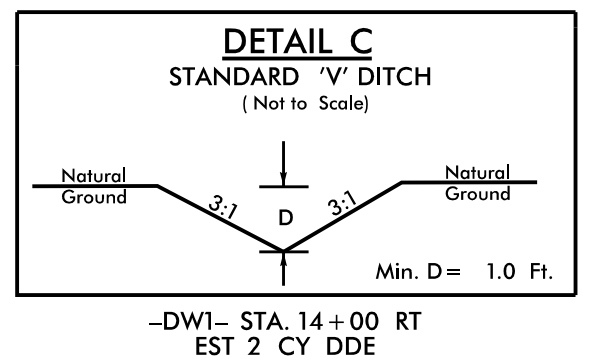
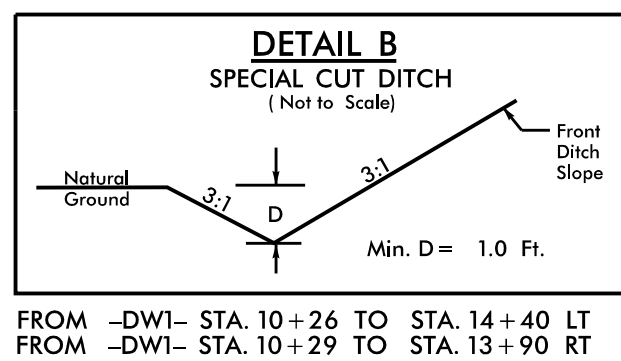
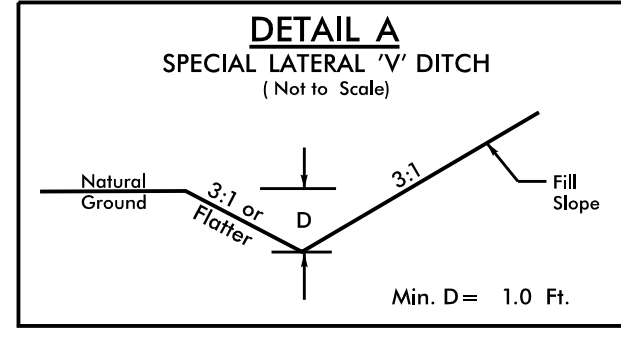
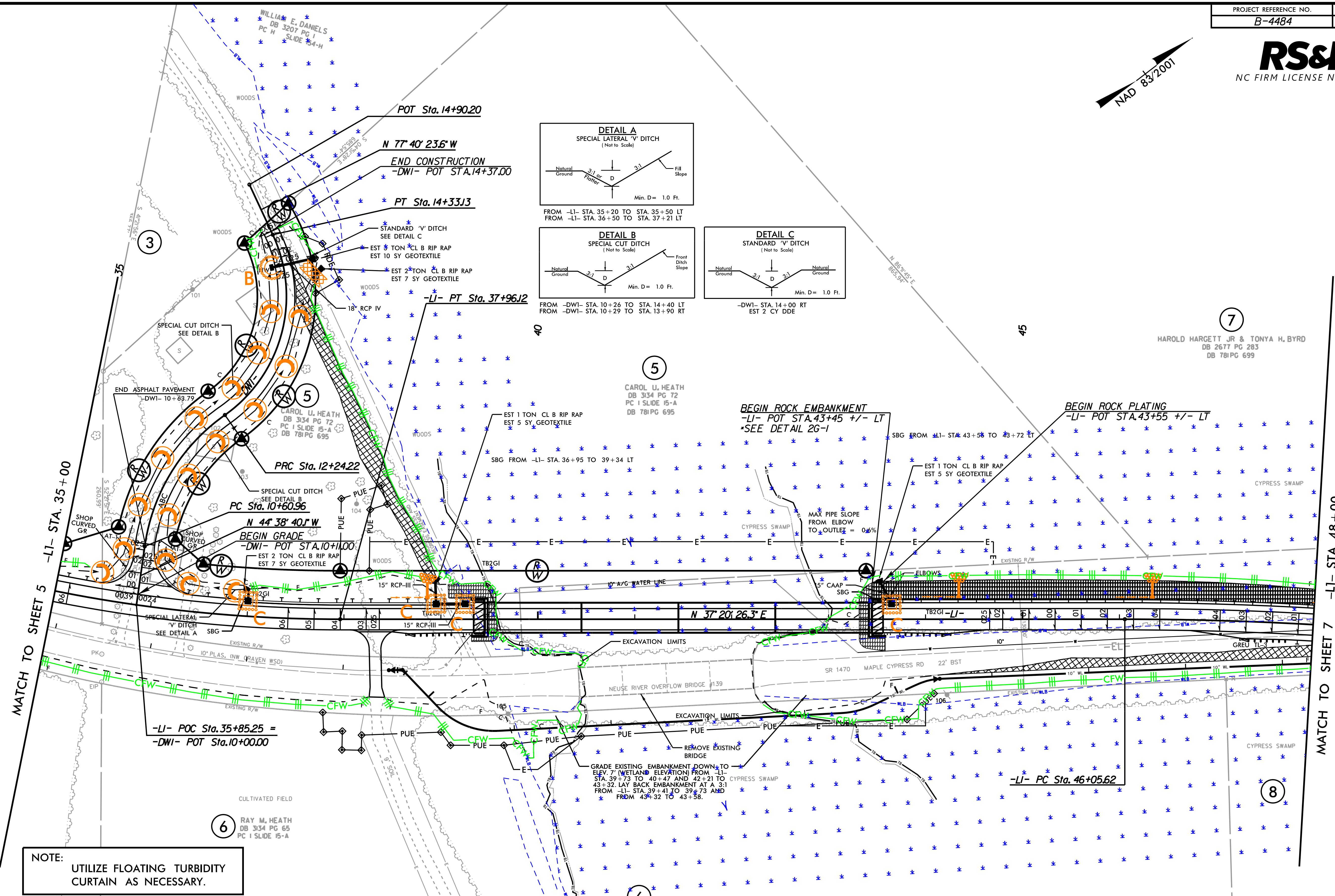


8/17/99

REVISIONS



**NOTE:**  
UTILIZE FLOATING TURBIDITY CURTAIN AS NECESSARY.

**NOTES:** ANY DEVIATION FROM OPTIONS GIVEN WILL REQUIRE PRIOR APPROVAL BY ENGINEER.

ADDITIONAL EROSION CONTROL DEVICES MAY NEED TO BE INSTALLED AS DIRECTED BY THE ENGINEER.

**-DWI- CURVE DATA**

PI Sta 11+47.45	PI Sta 13+49.63	PI Sta 47+08.74
$\Delta = 45^\circ 46' 08.1''$ (RT)	$\Delta = 79^\circ 47' 51.6''$ (LT)	$\Delta = 3^\circ 28' 28.7''$ (RT)
D = 28' 38" 52.4"	D = 38' 11" 49.9"	D = 1' 41" 06.6"
L = 163.25'	L = 208.91'	L = 206.19'
T = 86.48'	T = 125.41'	T = 103.13'
R = 200.00'	R = 150.00'	R = 3,400.00'
SE = NC	SE = NC	SE = 04
RO = N/A	RO = N/A	RO = 108'

**NOTE:** UTILIZE FABRIC INSERT INLET PROTECTIONS IN LIEU OF ROCK INLET SEDIMENT TRAP TYPE C TO PREVENT PONDING ON ROADS OPEN TO LIVE TRAFFIC.

**NOTE:** UTILIZE TEMPORARY SEDIMENT BASIN OR SPECIAL STILLING BASIN(S) AS STILLING BASIN WHERE APPLICABLE.

2/4/2020 R:\Environmental\Design\Plan Sheets\B-4484\EC\_pah\_12.dgn