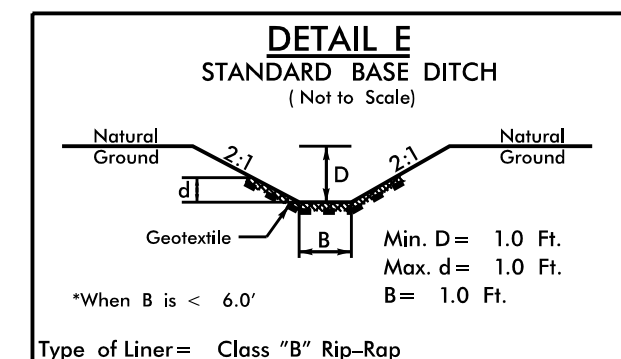
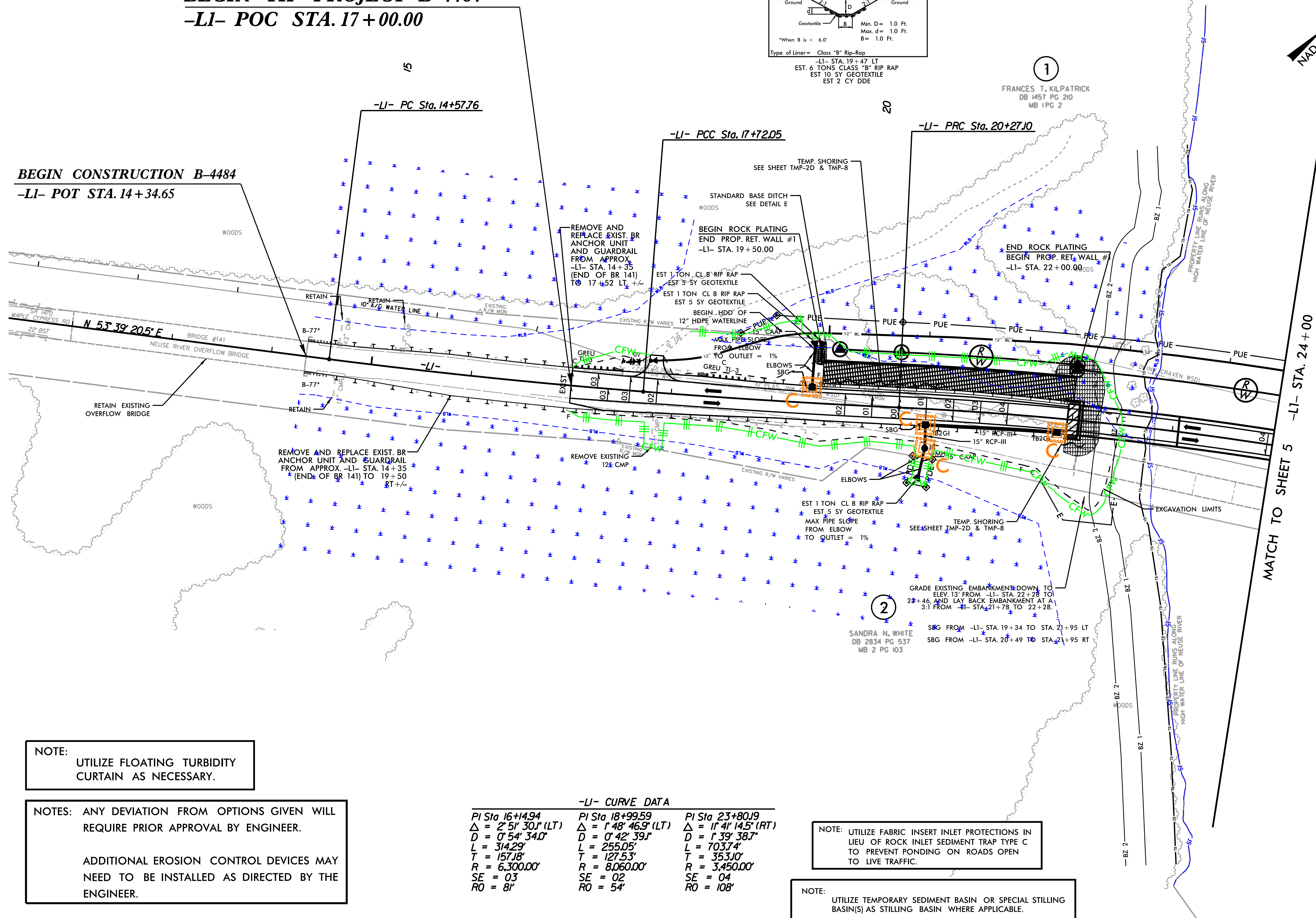


**BEGIN TIP PROJECT B-4484**  
**-LI- POC STA. 17+00.00**



**BEGIN CONSTRUCTION B-4484**  
**-LI- POT STA. 14+34.65**



REVISIONS

**NOTE:**  
UTILIZE FLOATING TURBIDITY CURTAIN AS NECESSARY.

**NOTES:** ANY DEVIATION FROM OPTIONS GIVEN WILL REQUIRE PRIOR APPROVAL BY ENGINEER.  
  
ADDITIONAL EROSION CONTROL DEVICES MAY NEED TO BE INSTALLED AS DIRECTED BY THE ENGINEER.

**-LI- CURVE DATA**

PI Sta 16+14.94 Δ = 2° 51' 30.1" (LT) D = 0° 54' 34.0" L = 314.29' T = 157.18' R = 6,300.00' SE = 03 RO = 81'	PI Sta 18+99.59 Δ = 1° 48' 46.9" (LT) D = 0° 42' 39.1" L = 255.05' T = 127.53' R = 8,060.00' SE = 02 RO = 54'	PI Sta 23+80.19 Δ = 11° 41' 14.5" (RT) D = 1° 39' 38.7" L = 703.74' T = 353.10' R = 3,450.00' SE = 04 RO = 108'
--	--	--

**NOTE:** UTILIZE FABRIC INSERT INLET PROTECTIONS IN LIEU OF ROCK INLET SEDIMENT TRAP TYPE C TO PREVENT PONDING ON ROADS OPEN TO LIVE TRAFFIC.

**NOTE:** UTILIZE TEMPORARY SEDIMENT BASIN OR SPECIAL STILLING BASIN(S) AS STILLING BASIN WHERE APPLICABLE.

8/17/99  
2/4/2020  
R:\Environmental\Design\Plan Sheets\B-4484\EC-10.pah\_10.dgn