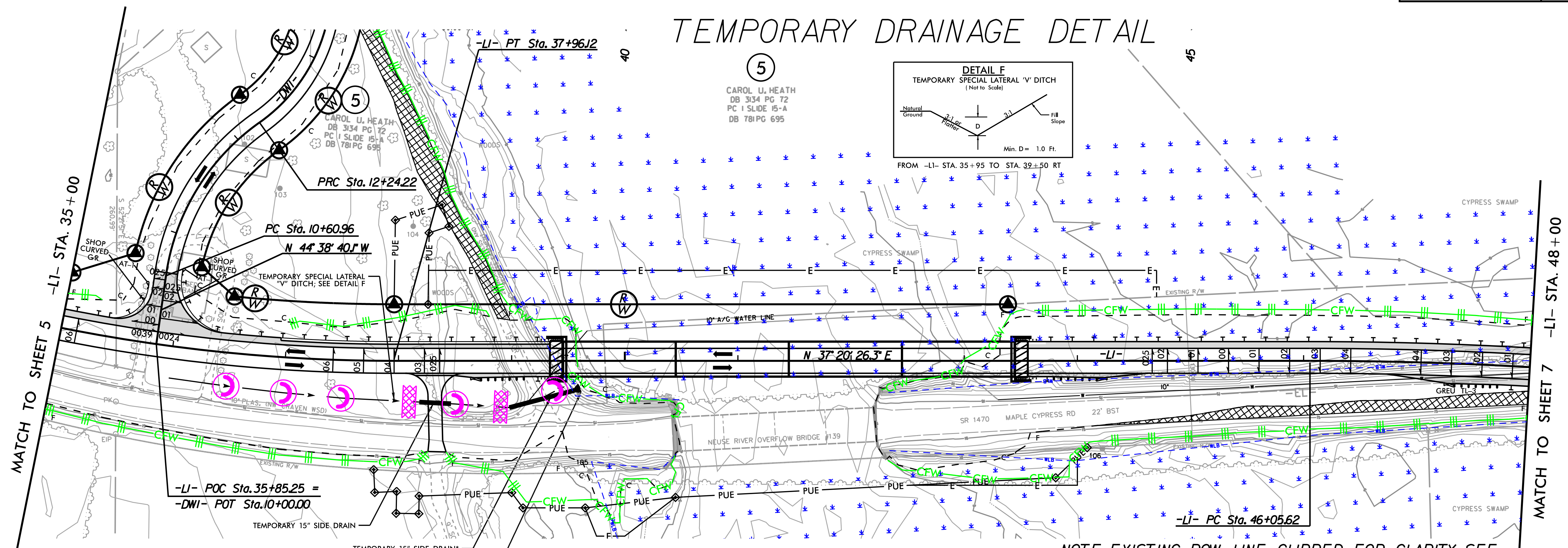
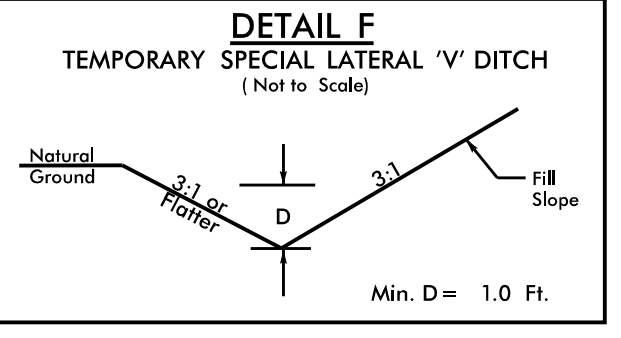


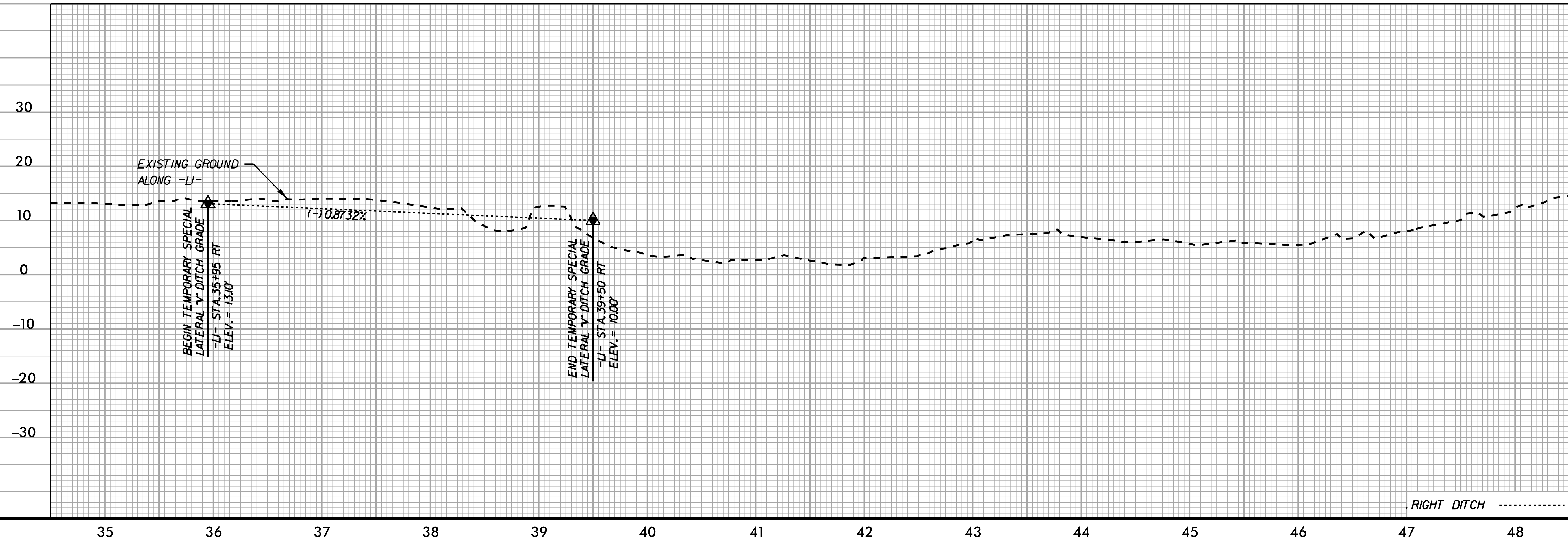
TEMPORARY DRAINAGE DETAIL

5

CAROL U. HEATH
DB 3134 PG 72
PC 1 SLIDE 15-A
DB 781 PG 695



NOTE: EXISTING ROW LINE CLIPPED FOR CLARITY; SEE PSH 6 FOR RIGHT OF WAY INFORMATION



REVISIONS

8/17/99
R:\2020\Environmental\Design\Plan Sheets\B-4484_EF_psh_09_Sp_Det.dgn
Nacunda