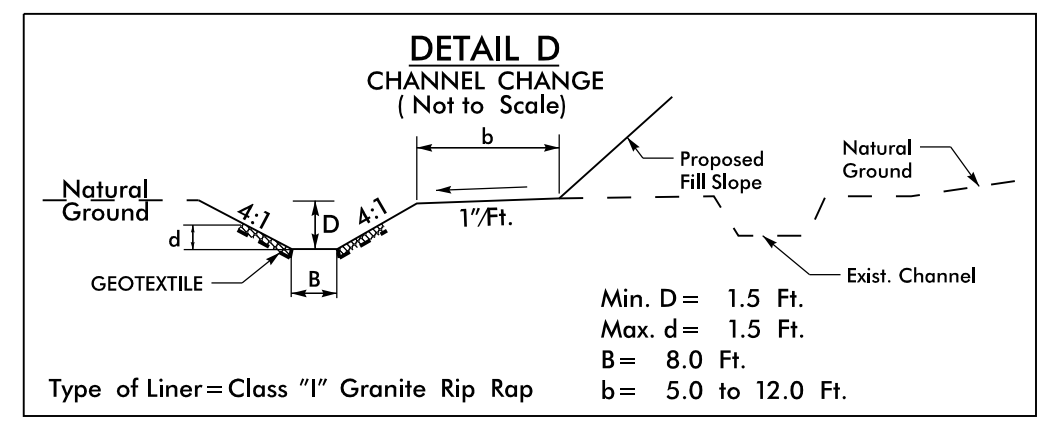


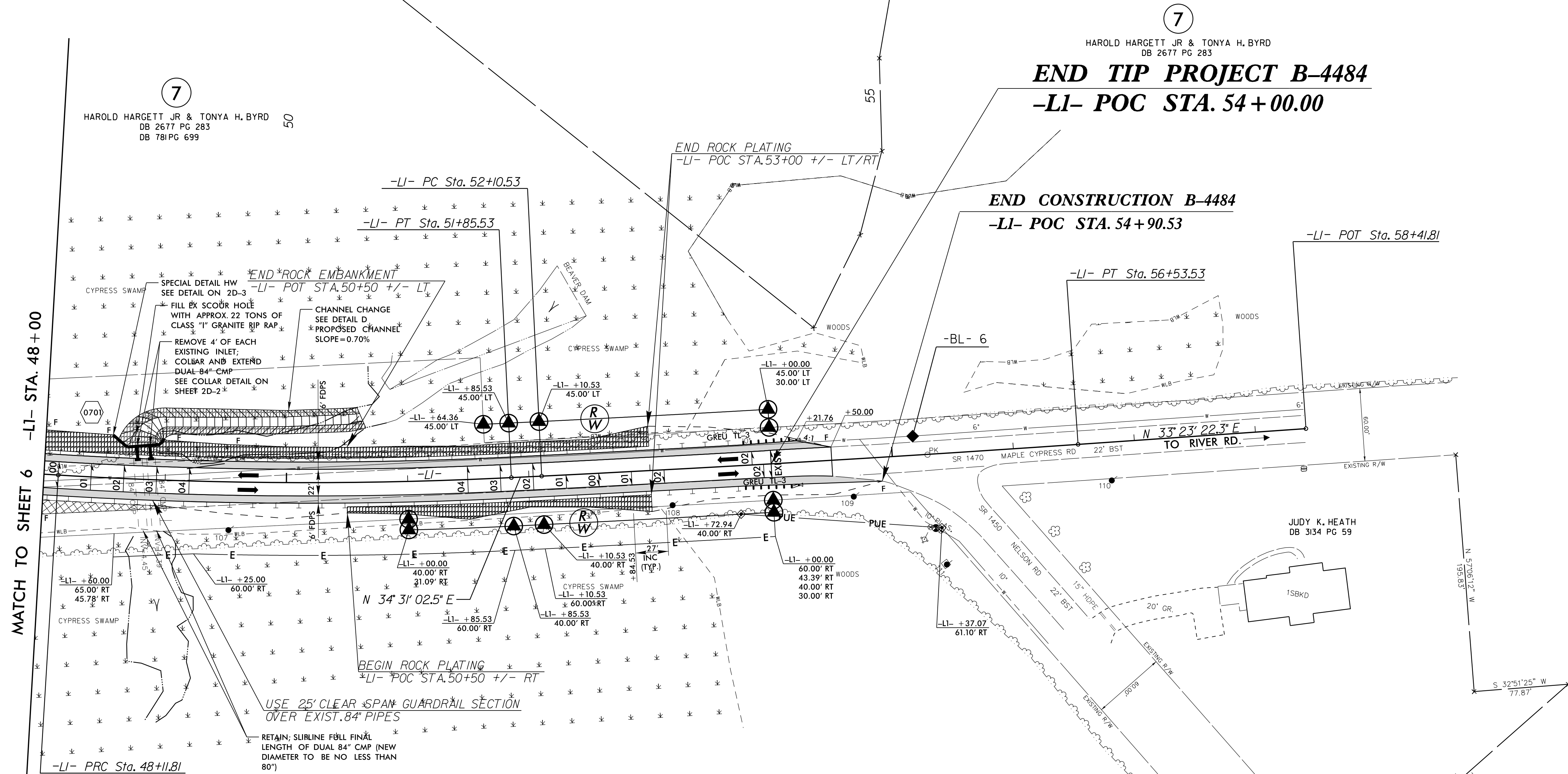
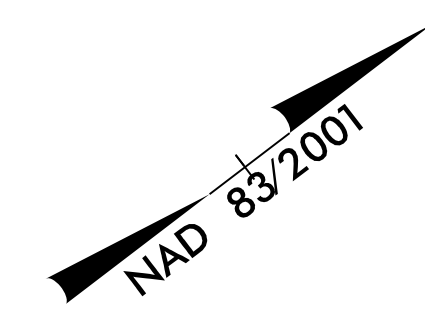
8/17/99

PROJECT REFERENCE NO. B-4484	SHEET NO. 7
RW SHEET NO.	
ROADWAY DESIGN ENGINEER HAROLD HARGETT JR. DB 2677 PG 283 3/27/2020	HYDRAULICS ENGINEER LEON BOSSINGER DB 3134 PG 59 3/27/2020
DOCUMENT NOT CONSIDERED FINAL UNLESS ALL SIGNATURES COMPLETED	



FROM -LI- STA. 48+80 TO STA. 50+50 LT  
 EST. CLASS "1" GRANITE RIP RAP = 106 TONS  
 EST. GEOTEXTILE = 234 SY  
 EST. DDE = 120 CY

LINDA B. MCKEEL, ET AL  
 DB 303 PG 280



7  
 HAROLD HARGETT JR & TONYA H. BYRD  
 DB 2677 PG 283  
 DB 781 PG 699

7  
 HAROLD HARGETT JR & TONYA H. BYRD  
 DB 2677 PG 283

**END TIP PROJECT B-4484**  
**-LI- POC STA. 54+00.00**

**END CONSTRUCTION B-4484**  
**-LI- POC STA. 54+90.53**

8  
 HAROLD HARGETT JR & TONYA H. BYRD  
 DB 2677 PG 283

-LI- CURVE DATA

PI Sta 49+98.86	PI Sta 54+32.04
$\Delta = 6^{\circ}17'52.5''$ (LT)	$\Delta = 1^{\circ}07'40.2''$ (LT)
$D = 1^{\circ}41'06.6''$	$D = 0^{\circ}15'16.5''$
$L = 373.73'$	$L = 443.00'$
$T = 187.05'$	$T = 221.51'$
$R = 3,400.00'$	$R = 22,505.00'$
$SE = 04$	$SE = NC$
$RO = 108'$	$RO = N/A$

FOR -LI- PROFILE, SEE SHEET NO. 9

	BRIDGE APPROACH SLAB
	PAVEMENT REMOVAL
	ROCK PLATING

PC-MAR-2020\_07155  
 RS-Roadwork-07155  
 B-4484-07155.dgn