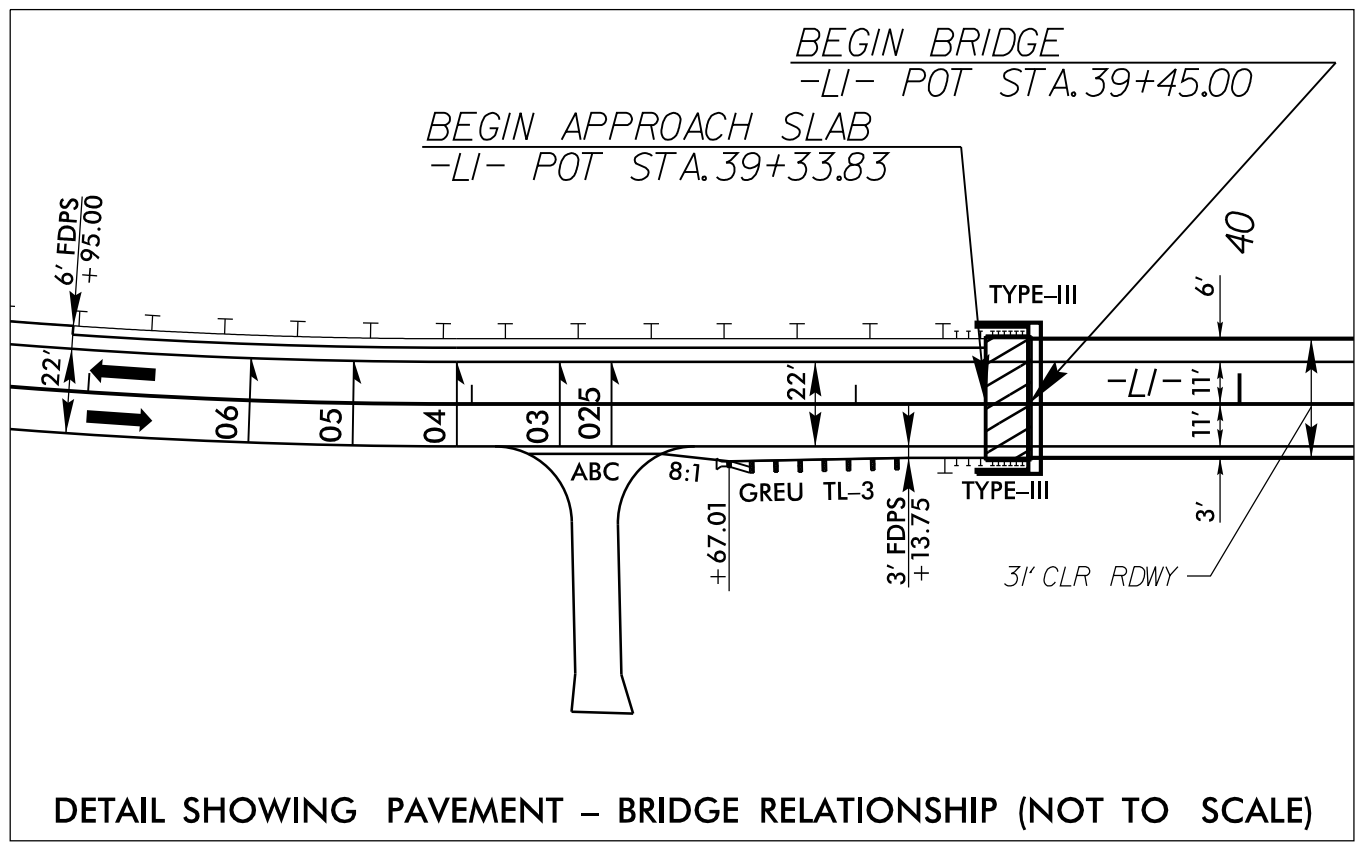
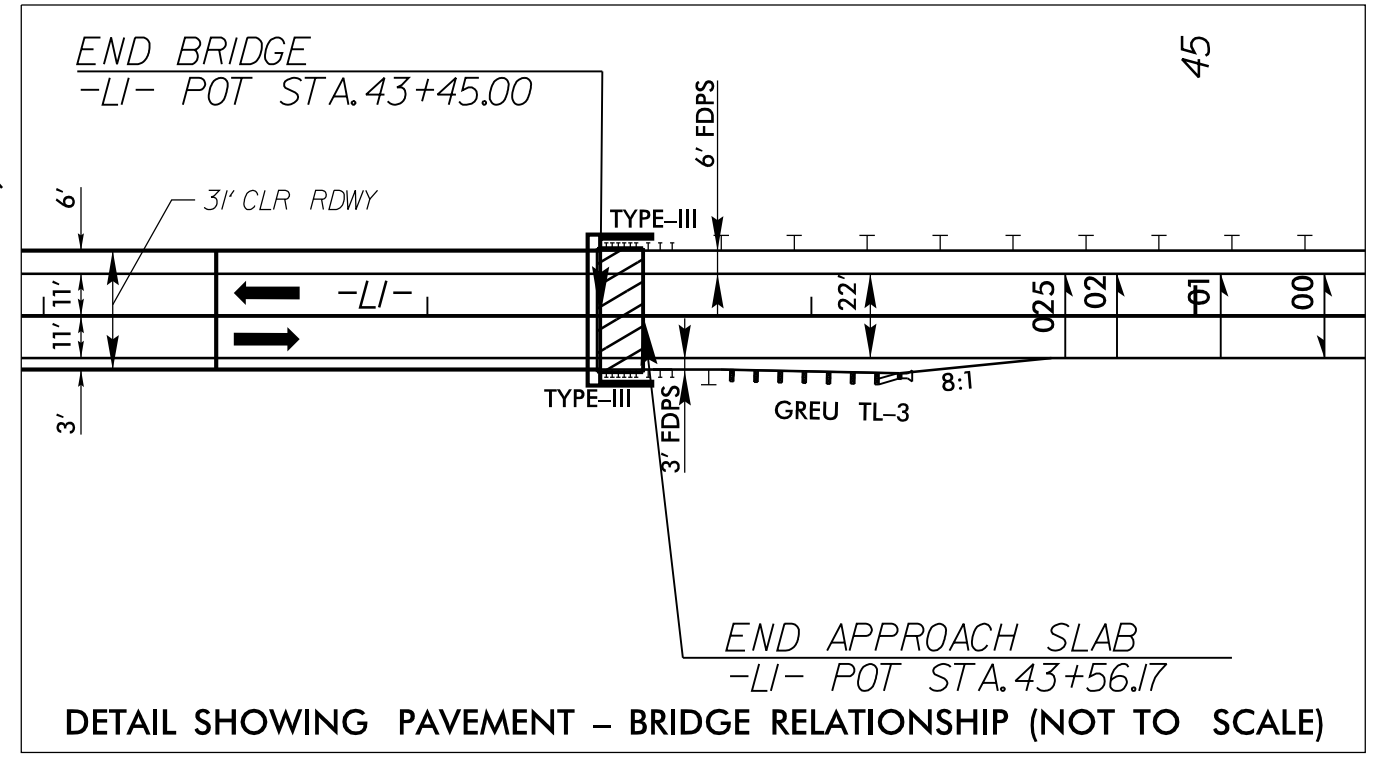
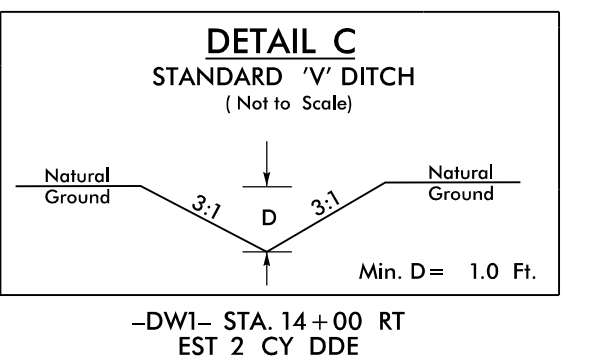
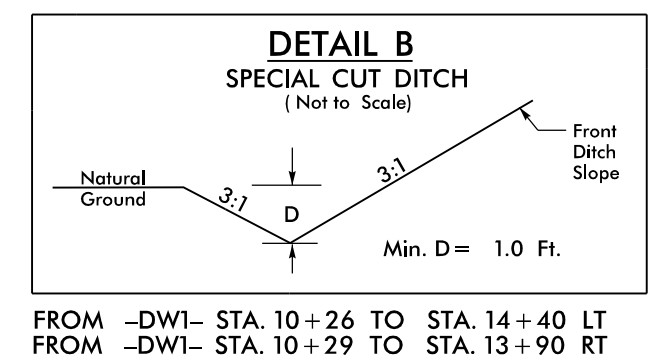
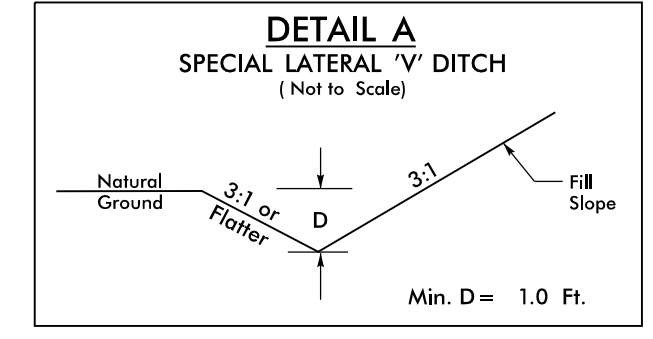
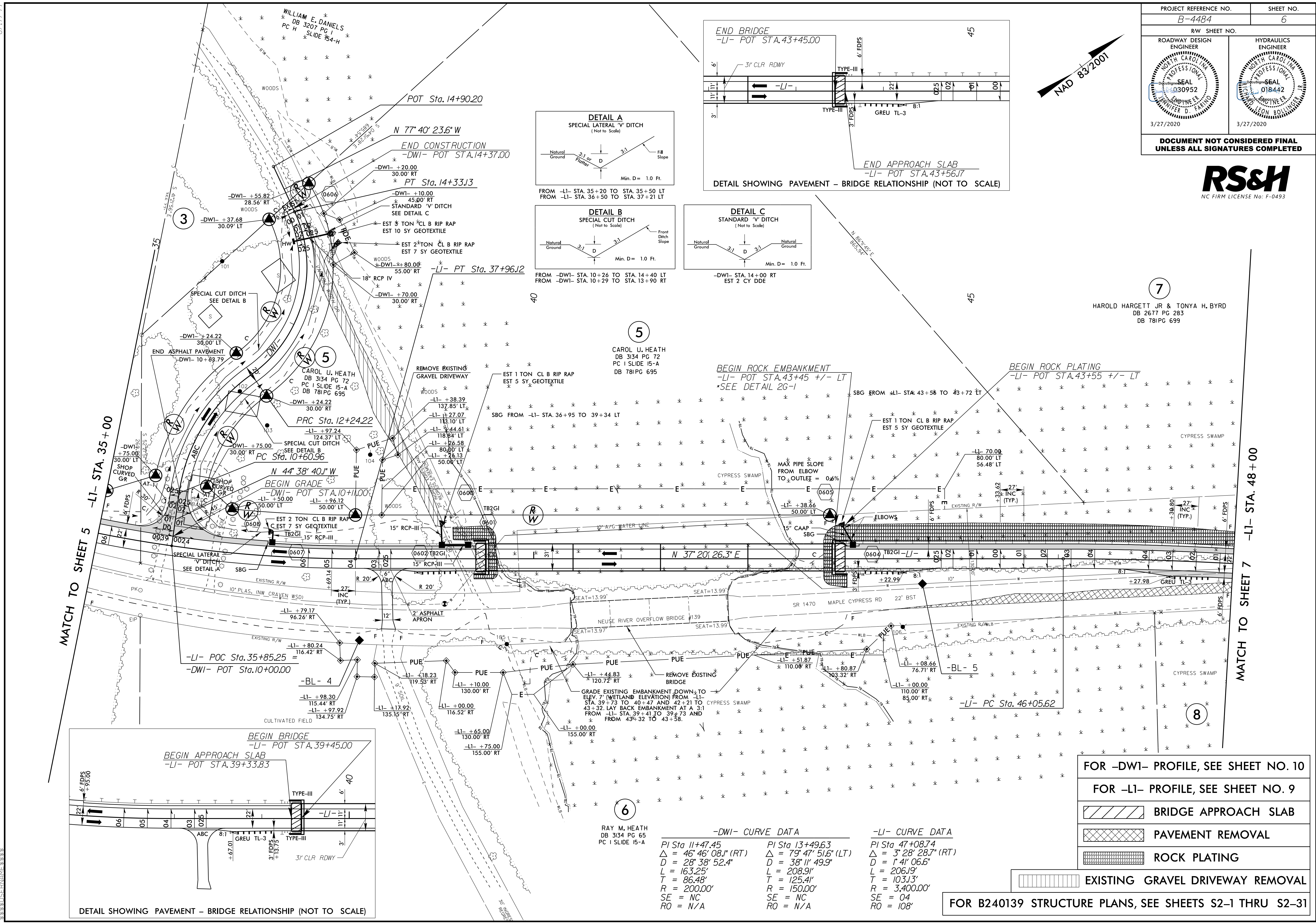
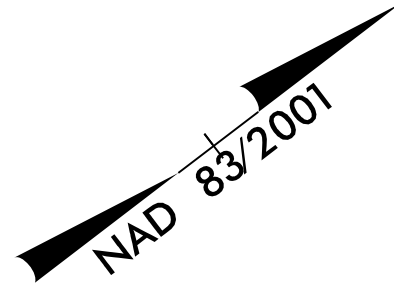


PROJECT REFERENCE NO. B-4484		SHEET NO. 6	
RW SHEET NO.		HYDRAULICS ENGINEER	
ROADWAY DESIGN ENGINEER		NORTH CAROLINA PROFESSIONAL SEAL 030952 3/27/2020	
		NORTH CAROLINA PROFESSIONAL SEAL 018442 3/27/2020	
DOCUMENT NOT CONSIDERED FINAL UNLESS ALL SIGNATURES COMPLETED			



6
RAY M. HEATH
DB 3134 PG 65
PC 1 SLIDE 15-A

-DWI- CURVE DATA		-LI- CURVE DATA	
PI Sta 11+47.45	PI Sta 13+49.63	PI Sta 47+08.74	
$\Delta = 46^\circ 46' 08.1''$ (RT)	$\Delta = 79^\circ 47' 51.6''$ (LT)	$\Delta = 3^\circ 28' 28.7''$ (RT)	
$D = 28^\circ 38' 52.4''$	$D = 38^\circ 11' 49.9''$	$D = 1^\circ 41' 06.6''$	
$L = 163.25'$	$L = 208.91'$	$L = 206.19'$	
$T = 86.48'$	$T = 125.41'$	$T = 103.13'$	
$R = 200.00'$	$R = 150.00'$	$R = 3,400.00'$	
$SE = NC$	$SE = NC$	$SE = 04'$	
$RO = N/A$	$RO = N/A$	$RO = 108'$	

FOR -DWI- PROFILE, SEE SHEET NO. 10

FOR -LI- PROFILE, SEE SHEET NO. 9

	BRIDGE APPROACH SLAB
	PAVEMENT REMOVAL
	ROCK PLATING
	EXISTING GRAVEL DRIVEWAY REMOVAL

FOR B240139 STRUCTURE PLANS, SEE SHEETS S2-1 THRU S2-31

10-MAR-2020 2:01:21
 PC: H:\B240139\B240139_1_Rdy_psh_06.dgn
 \$\$\$\$DISPERSE\$\$\$\$