

B-17/99

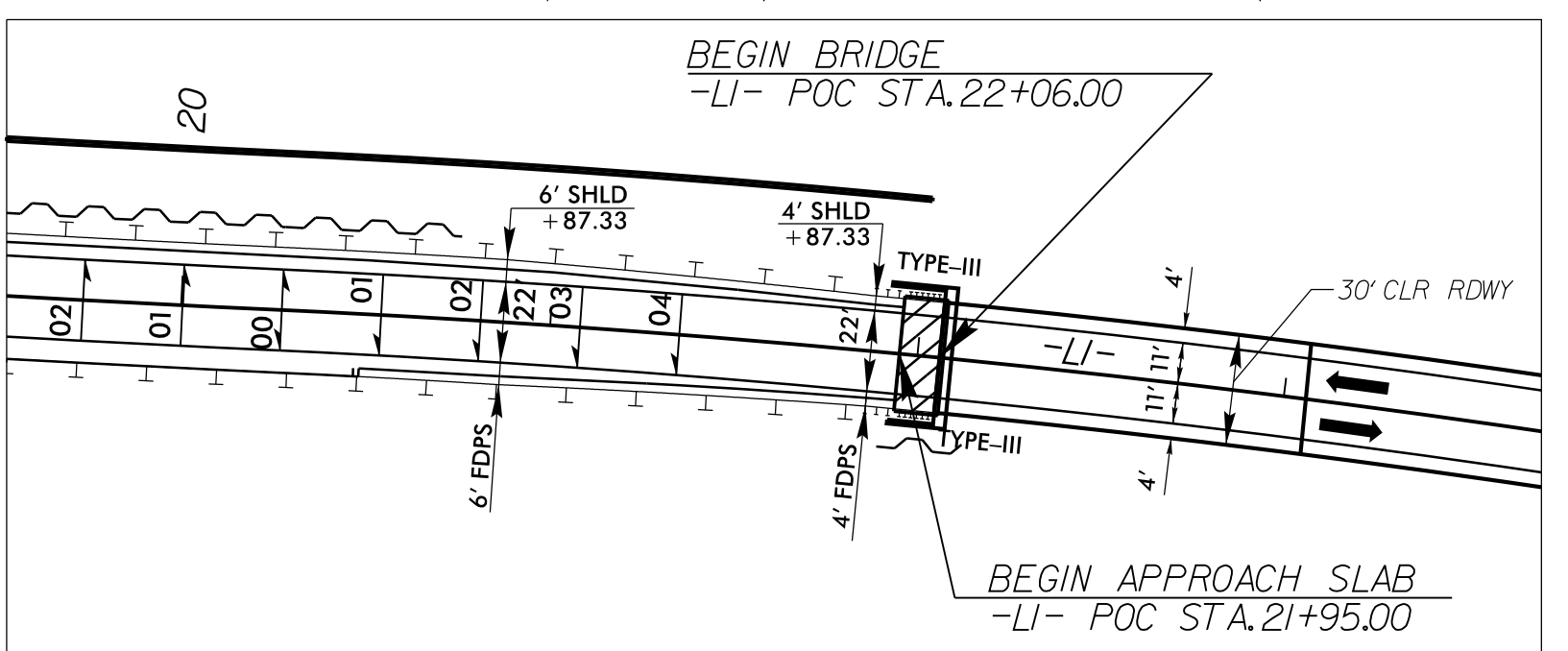
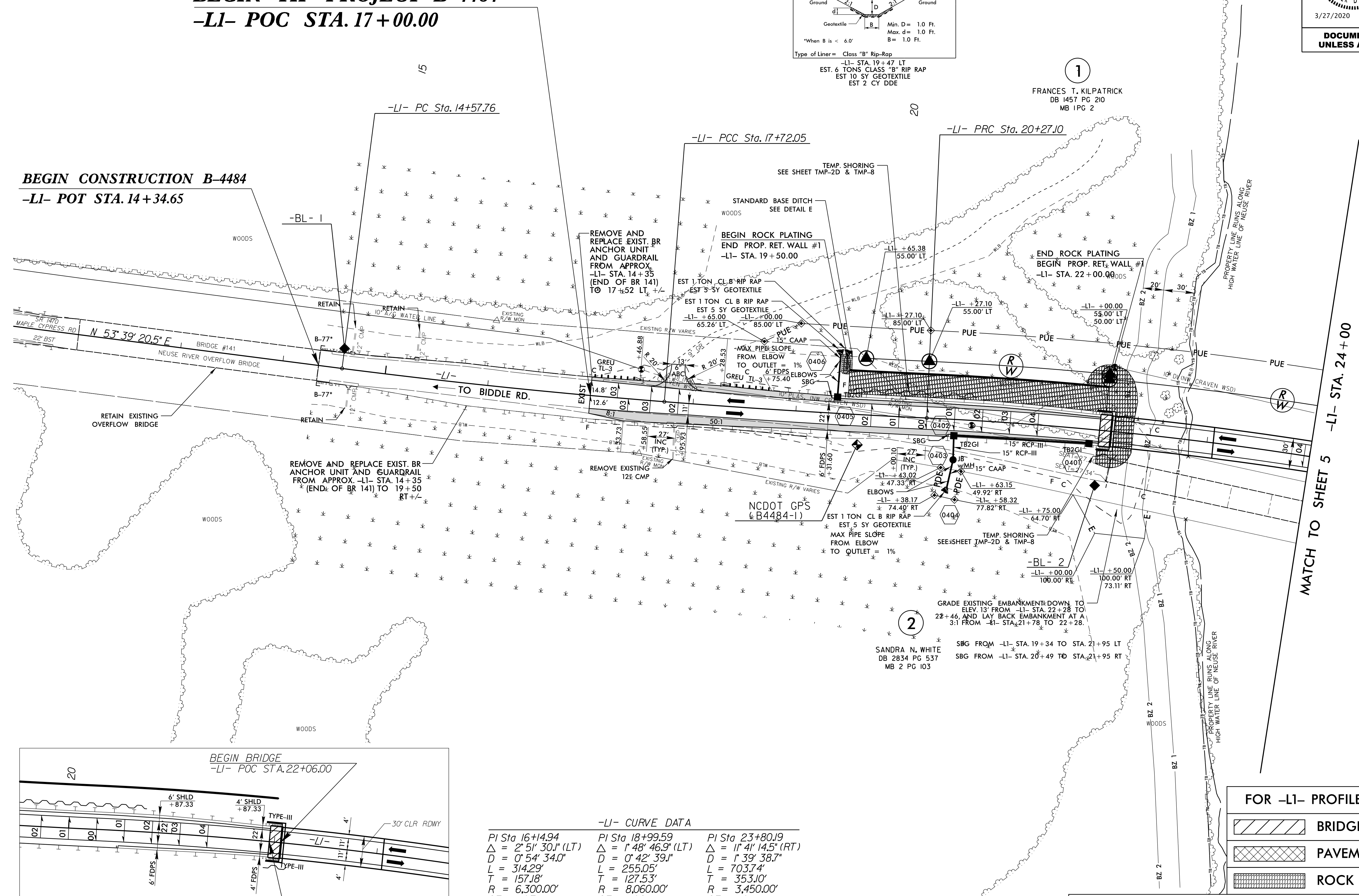
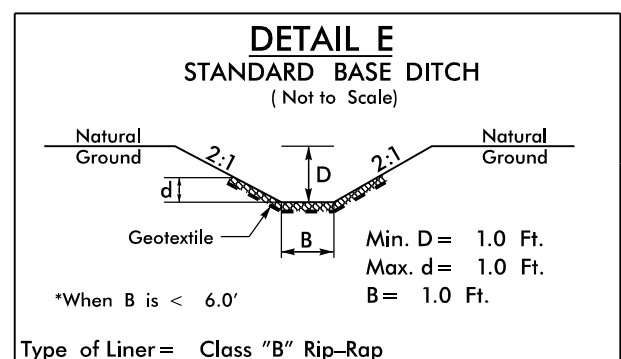
*NOTE: PROPOSED B-77 ANCHOR UNITS FOR BR 141 NEED TO BE ANCHORED AT THE HEIGHT OF THE EXISTING ANCHOR UNITS, USING NCDOT ROADWAY STANDARD DRAWING 862.02 SHEET 4 OF 8 TO TRANSITION FROM THE PROPOSED GUARDRAIL TO EXISTING ANCHOR HEIGHT.

PROJECT REFERENCE NO. B-4484	SHEET NO. 4
RW SHEET NO.	
ROADWAY DESIGN ENGINEER SEAL 030952 3/27/2020	HYDRAULICS ENGINEER SEAL 018442 3/27/2020
DOCUMENT NOT CONSIDERED FINAL UNLESS ALL SIGNATURES COMPLETED	



BEGIN TIP PROJECT B-4484 -LI- POC STA. 17+00.00

BEGIN CONSTRUCTION B-4484 -LI- POT STA. 14+34.65



-LI- CURVE DATA

PI Sta 16+14.94 Δ = 2° 51' 30.1" (LT) D = 0° 54' 34.0" L = 314.29' T = 157.18' R = 6,300.00' SE = 03 RO = 81'	PI Sta 18+99.59 Δ = 1° 48' 46.9" (LT) D = 0° 42' 39.1" L = 255.05' T = 127.53' R = 8,060.00' SE = 02 RO = 54'	PI Sta 23+80.19 Δ = 11° 41' 14.5" (RT) D = 1° 39' 38.7" L = 703.74' T = 353.10' R = 3,450.00' SE = 04 RO = 108'
--	--	--

FOR -LI- PROFILE, SEE SHEET NO. 8

- BRIDGE APPROACH SLAB
- PAVEMENT REMOVAL
- ROCK PLATING

FOR B240138 STRUCTURE PLANS, SEE SHEETS S1-1 THRU S1-37

FOR RETAINING WALL PLANS, SEE SHEETS W-1 THRU W-5

PC-MAR-2020_07155...
RS-Roadway...
B-17/99