


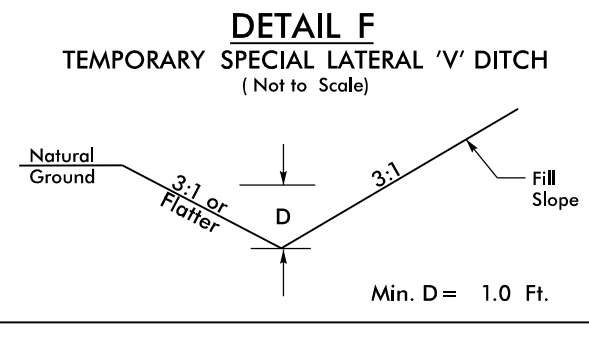
8.17.17.99

PROJECT REFERENCE NO. B-4484	SHEET NO. 2D-1
RW SHEET NO.	
HYDRAULICS ENGINEER	
	
DOCUMENT NOT CONSIDERED FINAL UNLESS ALL SIGNATURES COMPLETED	

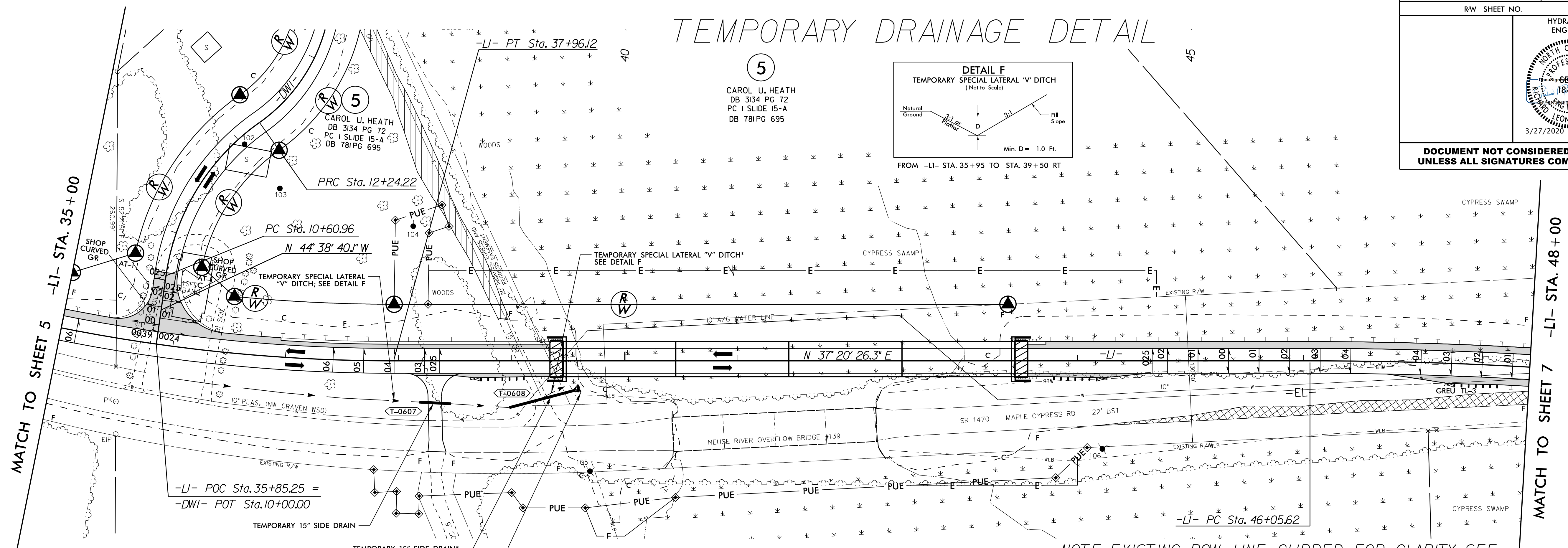
# TEMPORARY DRAINAGE DETAIL

5

CAROL U. HEATH  
DB 3134 PG 72  
PC 1 SLIDE 15-A  
DB 781 PG 695

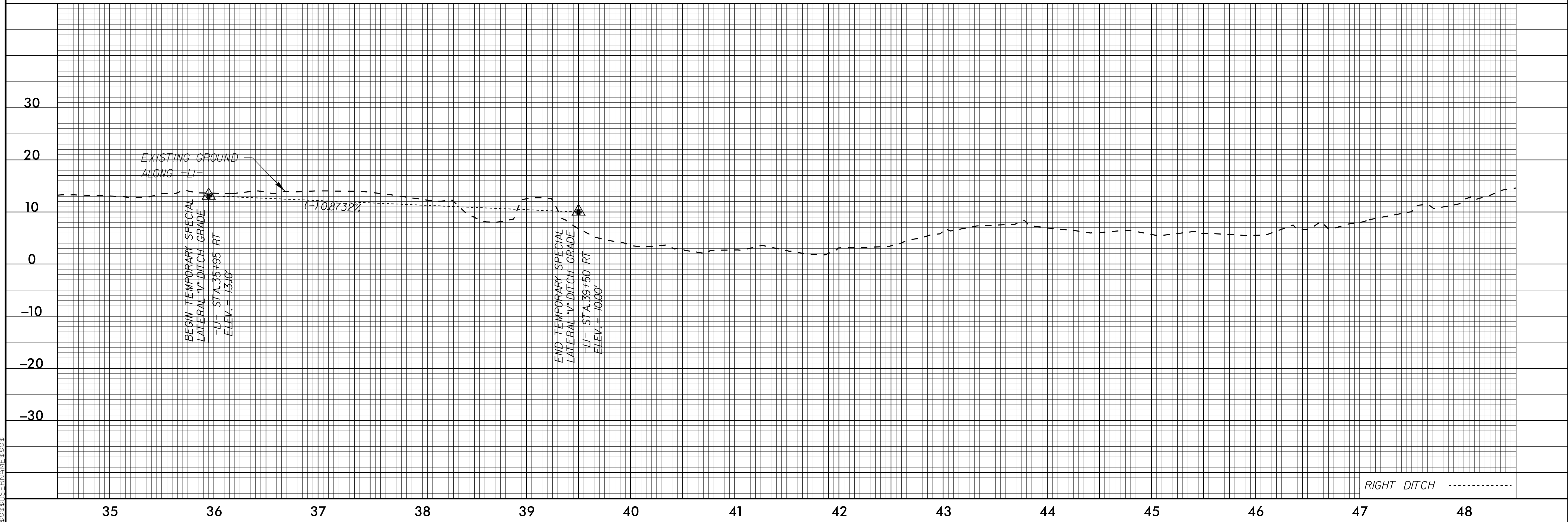


FROM -LI- STA. 35+95 TO STA. 39+50 RT



\*THE NEED FOR TEMPORARY PIPE "T-0608" AND RIP RAP OUTLET PAD IS DEPENDENT ON PHASING AND UP TO THE CONTRACTOR'S DISCRETION. IF THE NEW DRIVE TO THE BOAT RAMP (-DWI-) IS COMPLETED PRIOR TO ANY ROUGH GRADING OF -LI- IN THIS AREA IT IS RECOMMENDED TO DITCH THROUGH THE EXISTING DRIVE RATHER THAN UTILIZING TEMPORARY PIPE "T-0608".

NOTE: EXISTING ROW LINE CLIPPED FOR CLARITY; SEE PSH 6 FOR RIGHT OF WAY INFORMATION



05-MAR-2020 06:05  
PS: Drainage\100\_025\_Temporary Drainage\_2D-1.dgn  
\$\$\$\$\$USERNAME\$\$\$\$\$