

STATE OF  
NORTH CAROLINA  
DEPT. OF TRANSPORTATION  
DIVISION OF HIGHWAYS  
RALEIGH, N.C.

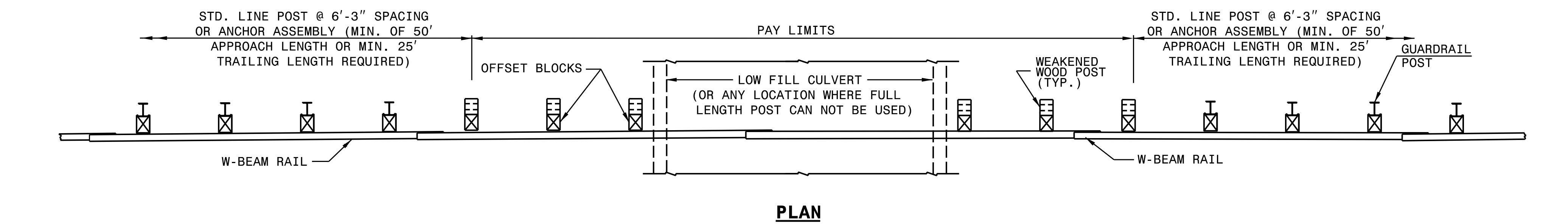
SPECIAL DETAIL FOR  
**GUARDRAIL PLACEMENT**  
25'-0" CLEAR SPAN

SHEET - OF -  
**862D01**

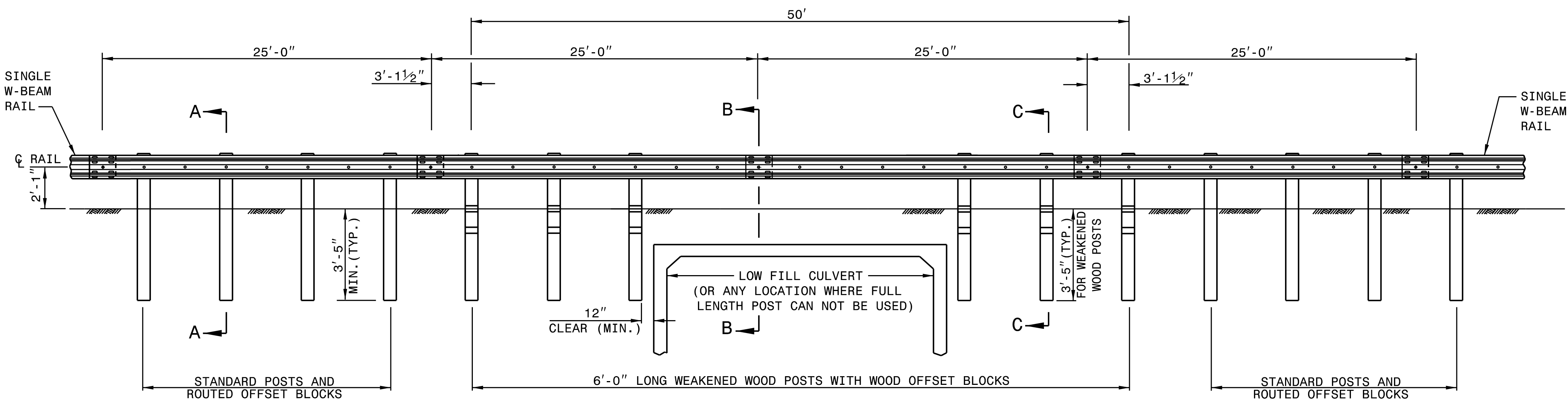
STATE OF  
NORTH CAROLINA  
DEPT. OF TRANSPORTATION  
DIVISION OF HIGHWAYS  
RALEIGH, N.C.

SPECIAL DETAIL FOR  
**GUARDRAIL PLACEMENT**  
25'-0" CLEAR SPAN

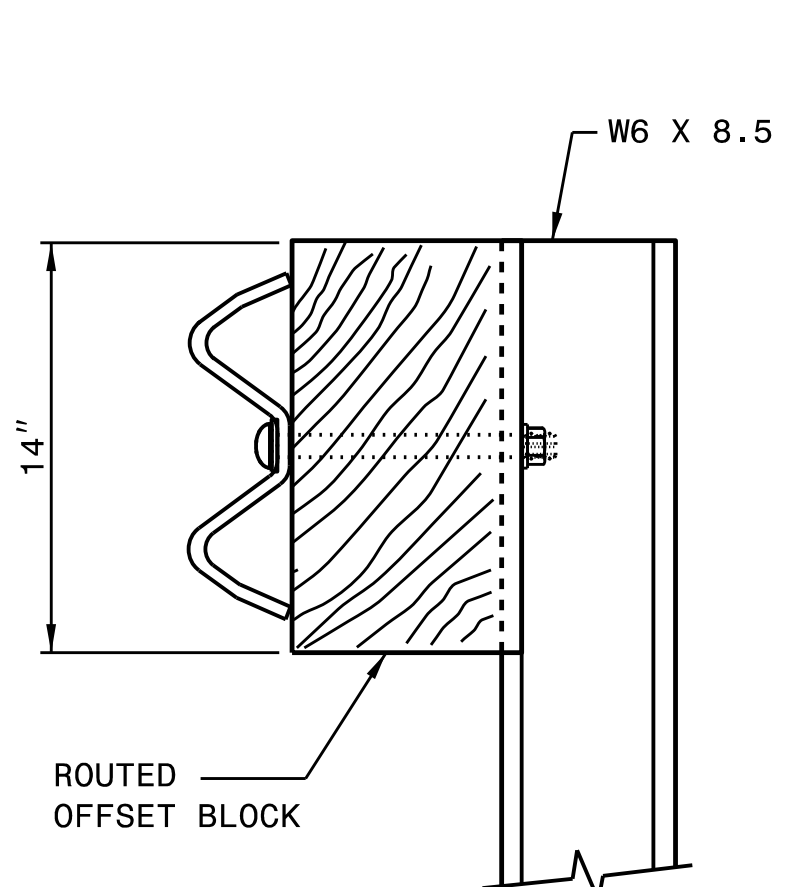
SHEET - OF -  
**862D01**



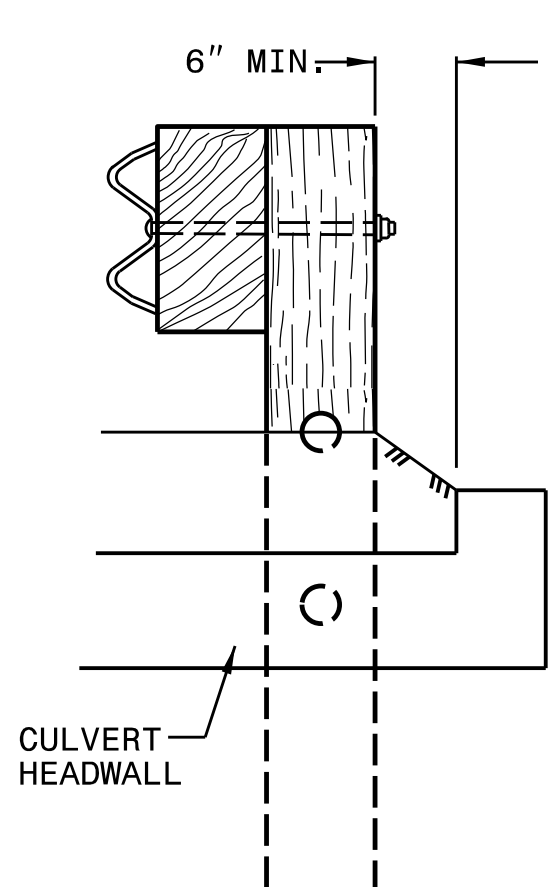
**PLAN**



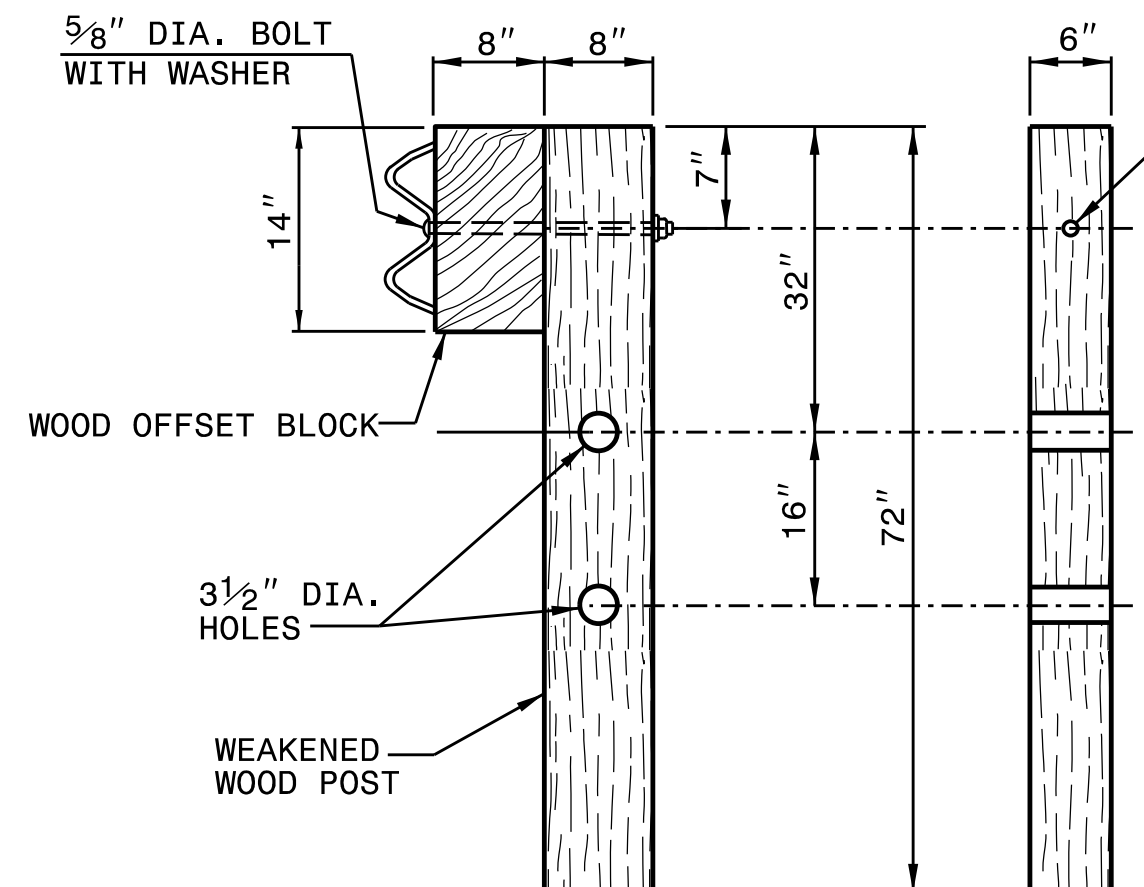
**ELEVATION  
25'-0" GUARDRAIL SPAN**



**SECTION A-A**

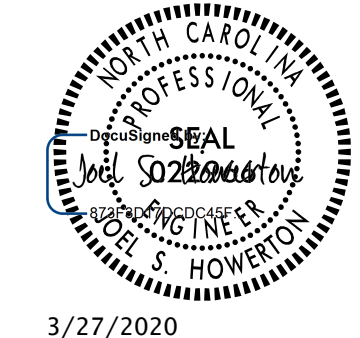


**SECTION B-B**



**SECTION C-C  
FRONT  
WEAKENED WOOD POST**

- GENERAL NOTES:  
 1. LAP RAIL IN THE DIRECTION OF TRAFFIC FLOW.  
 2. SEE ROADWAY PLANS FOR LOCATIONS AND CONTINUATION OF RAIL OR END SECTIONS.  
 3. MINIMUM DISTANCE OF 5 FEET BEHIND THE GUARDRAIL SHOULD BE CLEAR OF ANY FIXED-OBJECT HAZARDS THAT COULD SNAG AN IMPACTING VEHICLE.



DOCUMENT NOT CONSIDERED FINAL  
UNLESS ALL SIGNATURES COMPLETED

**CONTRACTS STANDARDS AND DEVELOPMENT UNIT**  
Office 919-707-6950 FAX 919-250-4119

**25'-0" CLEAR SPAN GUARDRAIL PLACEMENT**

ORIGINAL BY: _____	DATE: _____
MODIFIED BY: _____	DATE: _____
CHECKED BY: _____	DATE: _____
FILE SPEC.: _____	