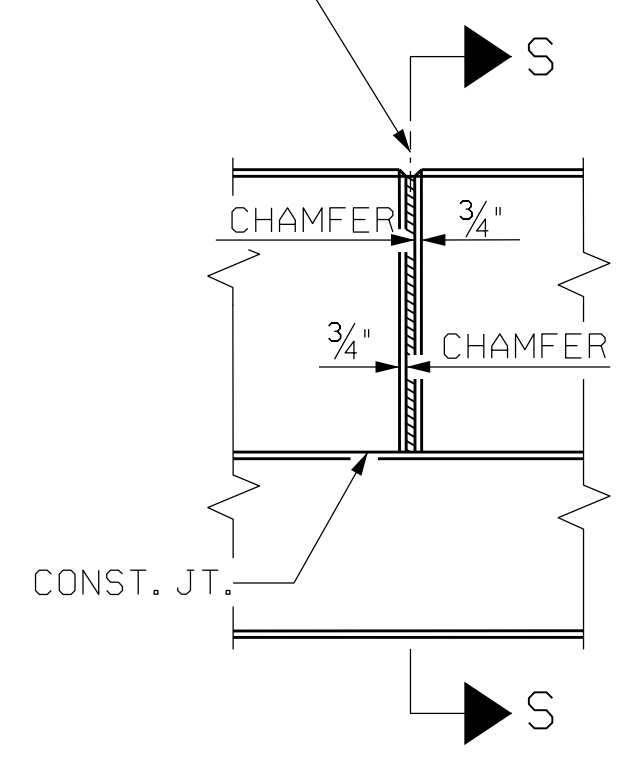


SECTION S-S
@ DAM IN OPEN JOINT
(THIS IS TO BE USED ONLY
WHEN SLIP FORM IS USED)

* 1/2" EXP. JT. MAT'L HELD IN PLACE WITH GALVANIZED NAILS. (NOTE: OMIT EXP. JT. MAT'L. WHEN SLIP FORM IS USED)

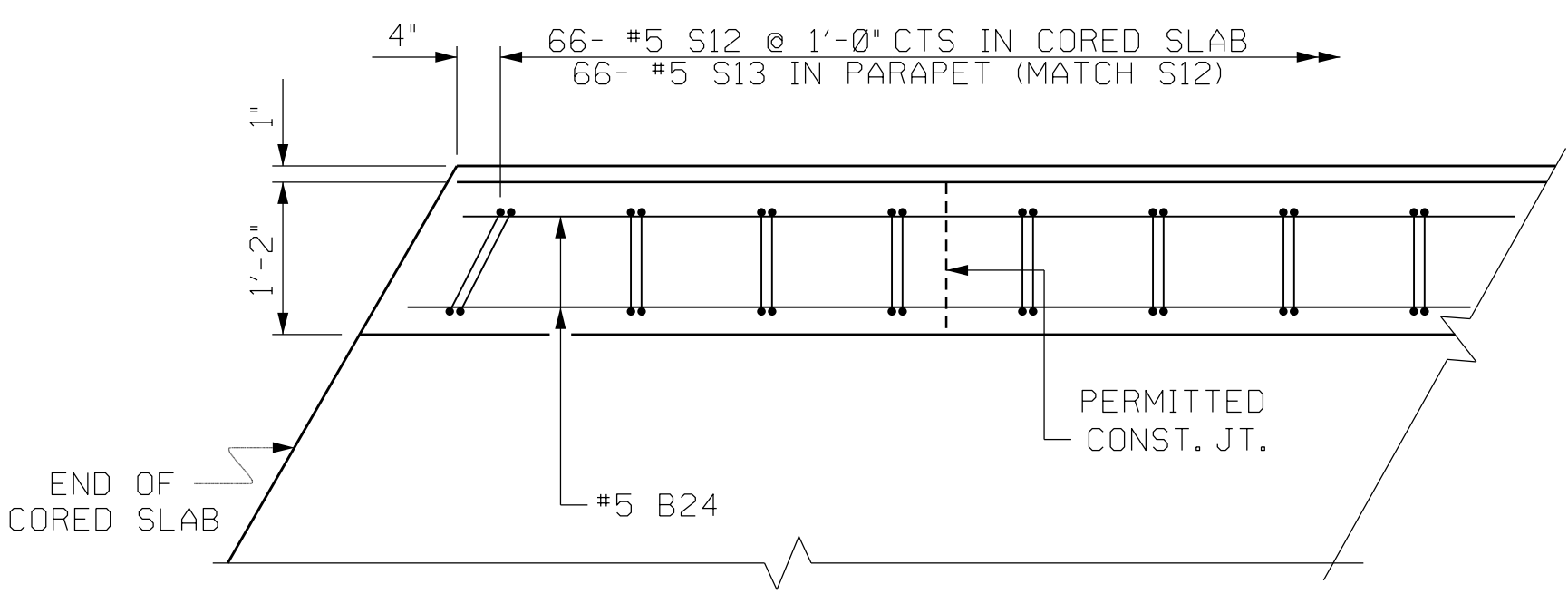


NOTES:

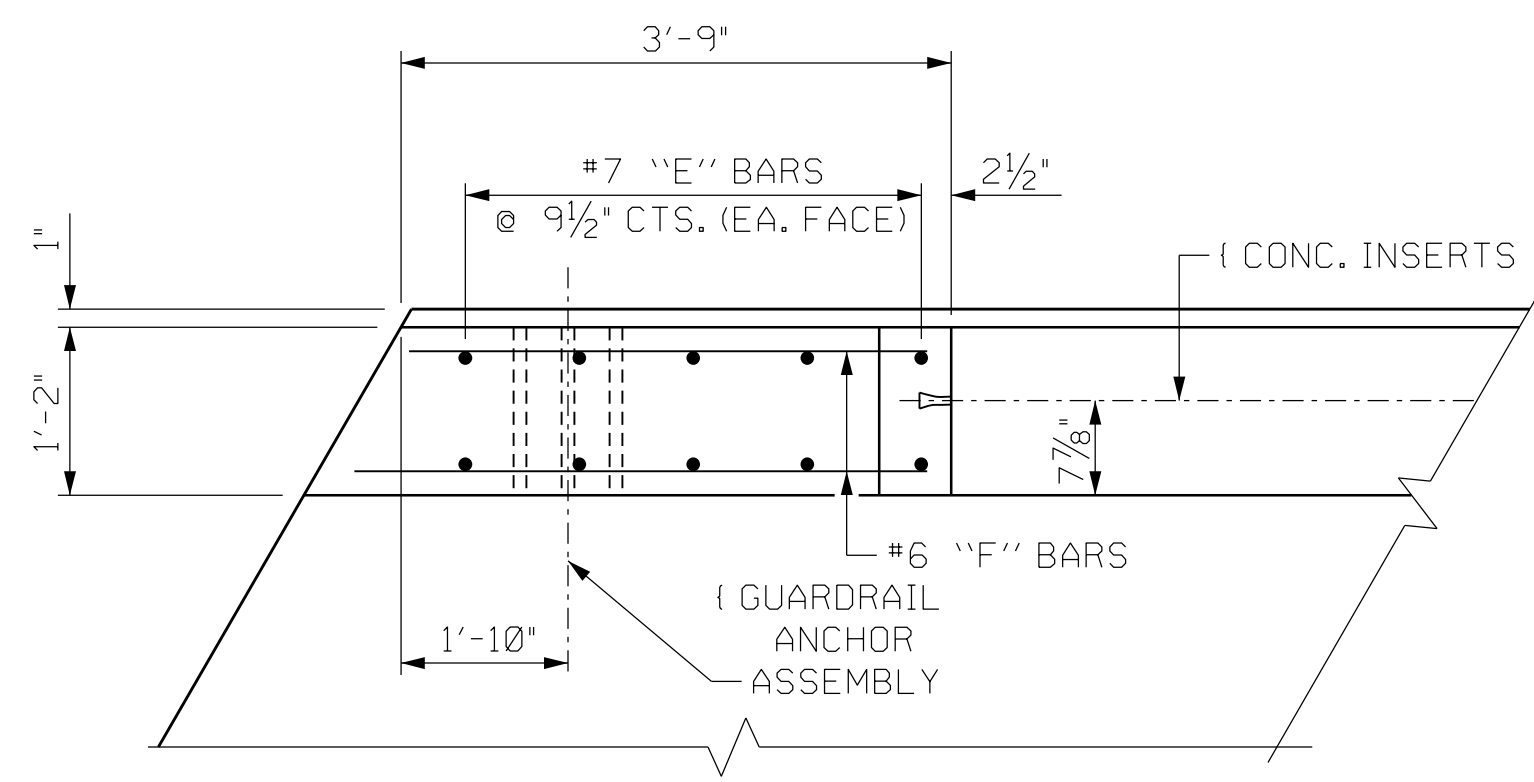
FOR DETAILS OF CONCRETE INSERTS IN END POSTS, SEE "RAIL POST SPACINGS AND END OF RAIL DETAILS" SHEET.
FOR DETAILS AND LOCATION OF GUARDRAIL ANCHOR ASSEMBLIES, SEE "GUARDRAIL ANCHORAGE DETAILS FOR METAL RAILS" SHEET.

BAR TYPES		BILL OF MATERIAL				
PARAPET AND END POSTS						
BAR	NO.	SIZE	TYPE	LENGTH	WEIGHT	
* B24	96	#5	STR	12'-10"	1285	
* E1	8	#7	STR	2'-11"	48	
* E2	8	#7	STR	3'-4"	55	
* E3	8	#7	STR	3'-10"	63	
* E4	8	#7	STR	4'-4"	71	
* E5	8	#7	STR	4'-9"	78	
* F1	8	#6	STR	1'-10"	22	
* F2	8	#6	STR	3'-0"	36	
* F3	8	#6	STR	3'-5"	41	
* S13	132	#5	1	5'-9"	792	
TOTAL REINFORCING STEEL					2489 LB	
CLASS AA CONCRETE					15.6 CY	
1'-2" X 2-9 1/2"					130 LF	
CONCRETE PARAPET						

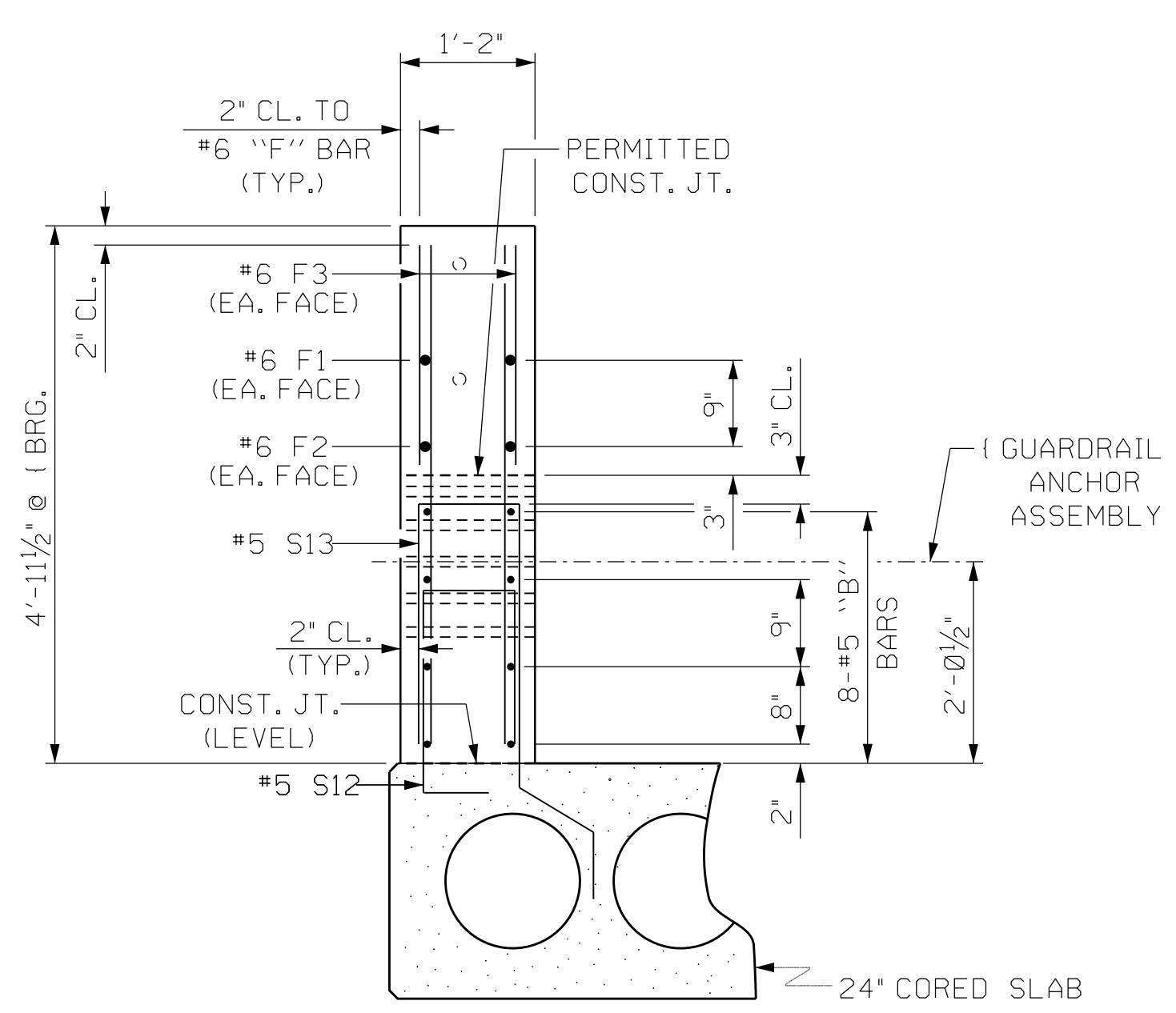
ELEVATION AT EXPANSION JOINTS



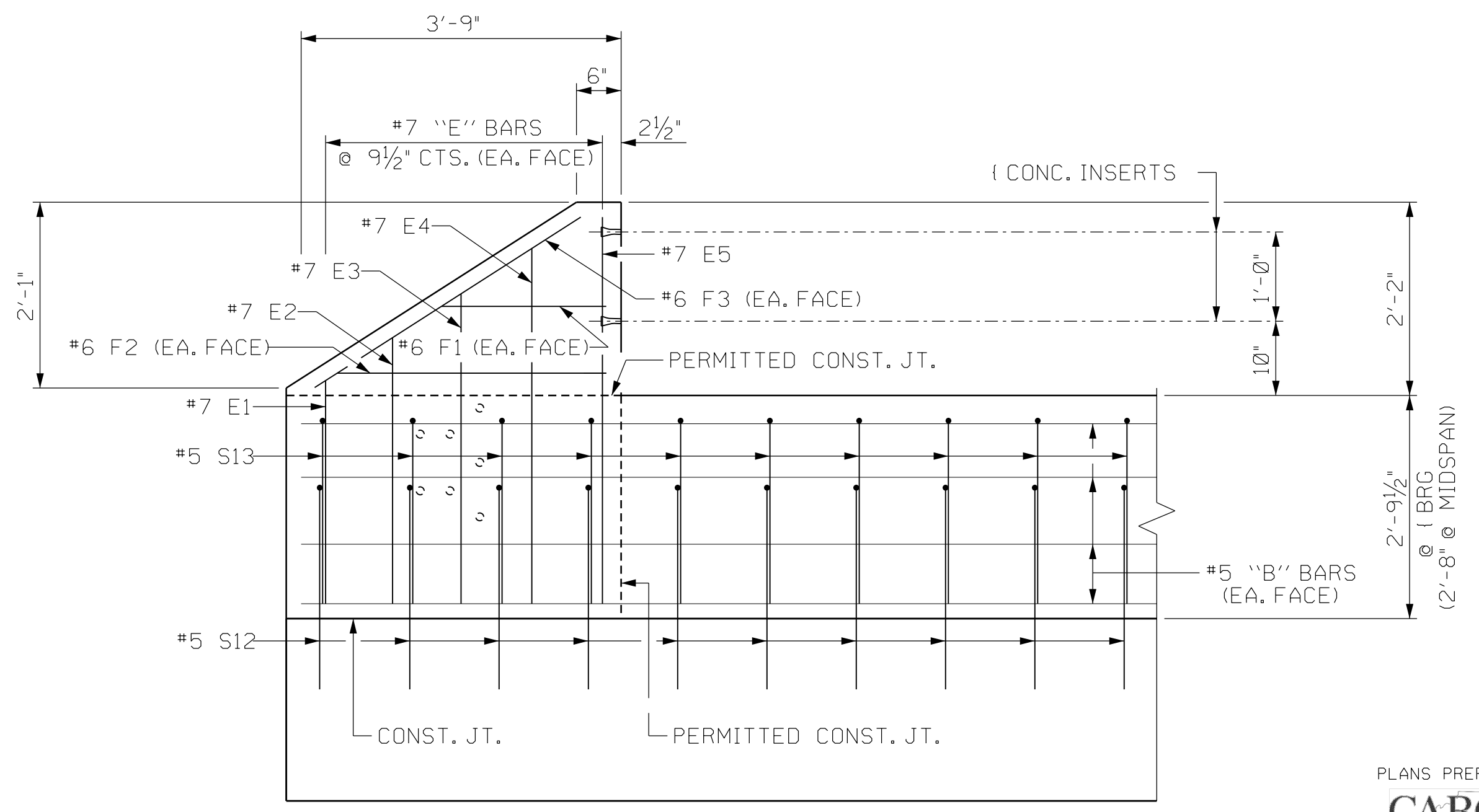
PLAN OF PARAPET



PLAN OF END POST



END VIEW



ELEVATION

PARAPET AND END POST FOR TWO BAR METAL RAIL

PROJECT NO. BR-0009
BUNCOMBE COUNTY
STATION: 12+94.70 -L-
SHEET 4 OF 4

STATE OF NORTH CAROLINA
DEPARTMENT OF TRANSPORTATION
RALEIGH
SUPERSTRUCTURE
CONCRETE PARAPET
DETAILS

PLANS PREPARED BY:
CAROLINA
TRANSPORTATION
ENGINEERS &
ARCHITECTS, P.C.
4270 Belle Meade Circle
Belmont, NC 28012
(980) 722-6065
www.carolina.TEA.com
License No. C-4307

1/15/2021
NORTH CAROLINA
PROFESSIONAL
SEAL
027292
ENGINEER
Derek C. Staton

DRAWN BY: J.D. BAKER DATE: 01-20
CHECKED BY: D.C. STATON DATE: 01-20
DESIGN ENGINEER OF RECORD: DCS DATE: 8-19

DOCUMENT NOT CONSIDERED
FINAL UNLESS ALL
SIGNATURES COMPLETED

REVISIONS						SHEET NO.
NO.	BY:	DATE:	NO.	BY:	DATE:	S-7
1			3			TOTAL SHEETS
2			4			18