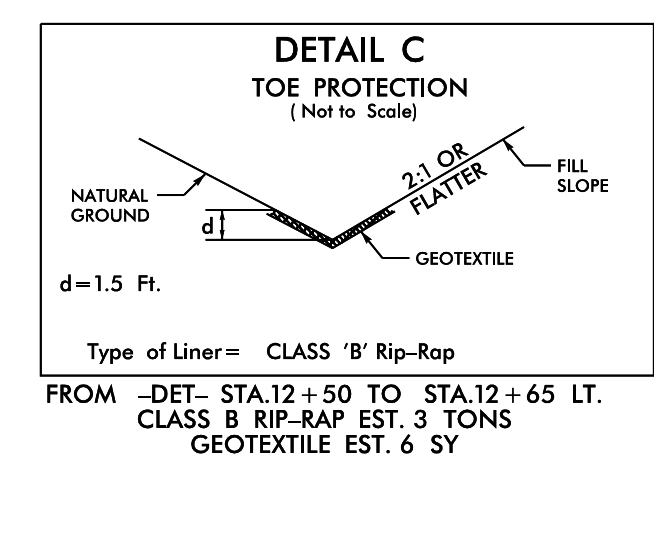
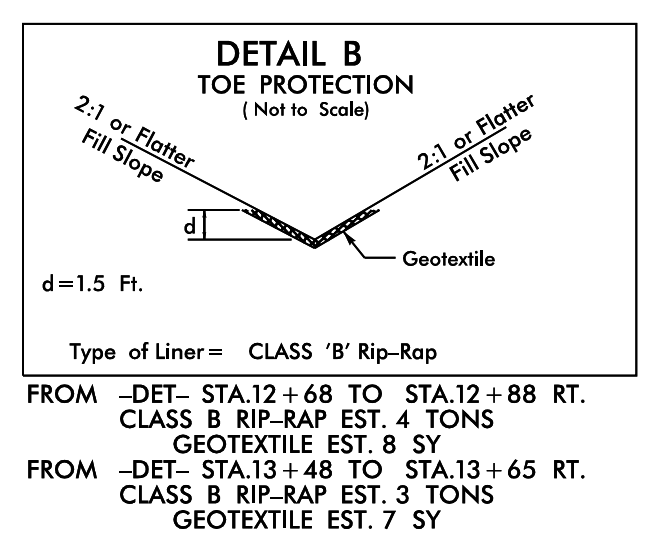


8/17/99

REVISIONS

27-JAN-2020 09:39  
R:\Roadwork\Projects\BR00009\_Rdy\_psh\_2B.dgn

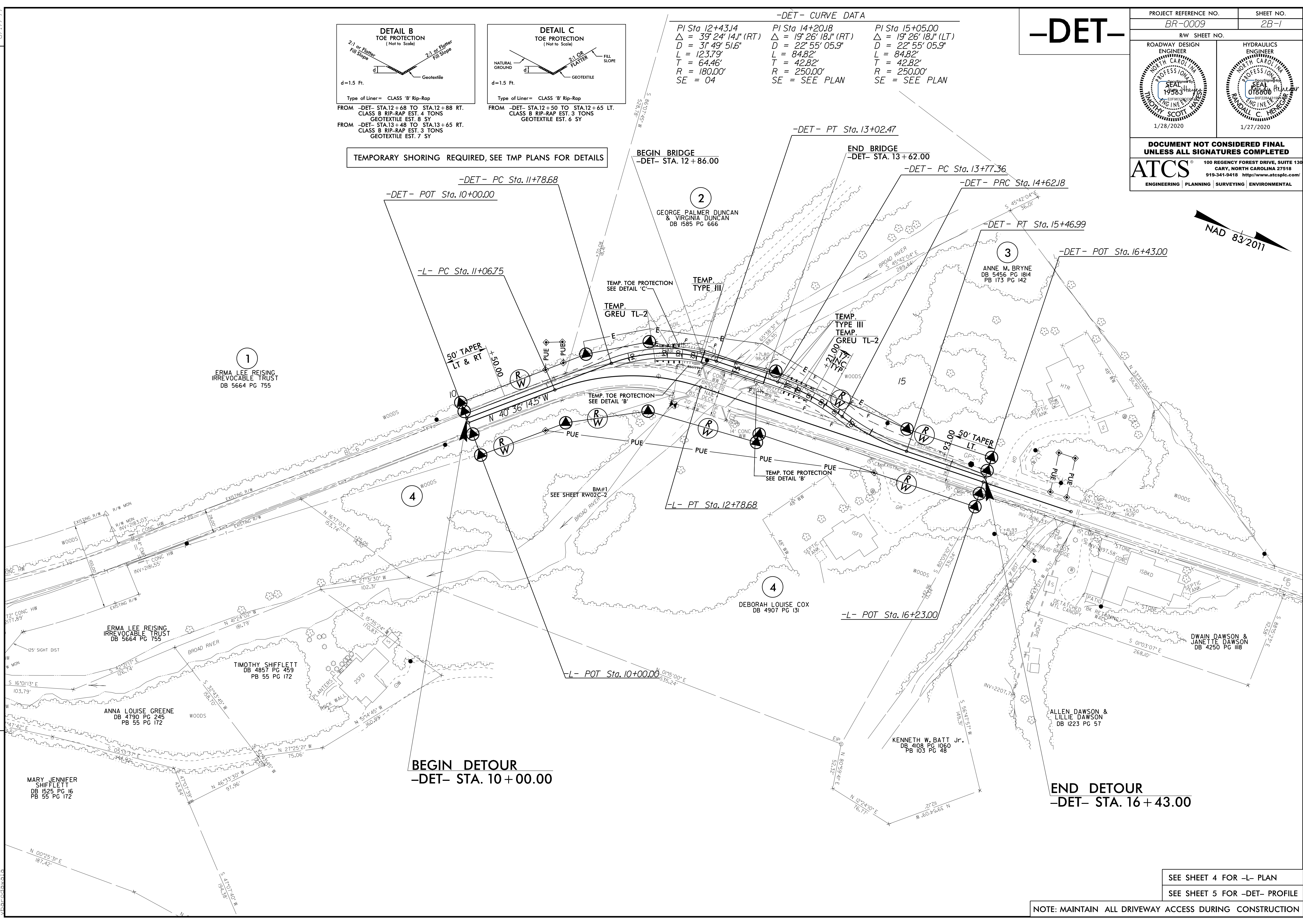
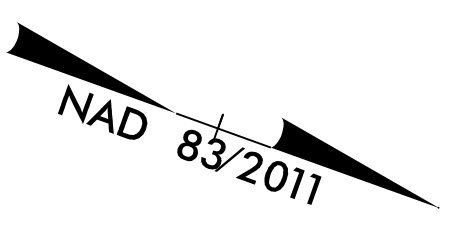


-DET- CURVE DATA

Station	Delta	Diameter (D)	Length (L)	Tangent (T)	Radius (R)	Setback (SE)
PI Sta 12+43.14	39° 24' 14" (RT)	31' 49" 51.6"	123.79'	64.46'	180.00'	04
PI Sta 14+20.18	19° 26' 18" (RT)	22' 55' 05.9"	84.82'	42.82'	250.00'	SEE PLAN
PI Sta 15+05.00	19° 26' 18" (LT)	22' 55' 05.9"	84.82'	42.82'	250.00'	SEE PLAN

# -DET-

PROJECT REFERENCE NO. <b>BR-0009</b>	SHEET NO. <b>2B-1</b>
RW SHEET NO.	
ROADWAY DESIGN ENGINEER	HYDRAULICS ENGINEER
1/28/2020	
1/27/2020	
<b>DOCUMENT NOT CONSIDERED FINAL UNLESS ALL SIGNATURES COMPLETED</b>	
<b>ATCS</b> 100 REGENCY FOREST DRIVE, SUITE 130 CARY, NORTH CAROLINA 27518 919-341-9418 <a href="http://www.atcsplc.com/">http://www.atcsplc.com/</a>	
ENGINEERING   PLANNING   SURVEYING   ENVIRONMENTAL	



TEMPORARY SHORING REQUIRED, SEE TMP PLANS FOR DETAILS

1  
ERMA LEE REISING  
IRREVOCABLE TRUST  
DB 5664 PG 755

2  
GEORGE PALMER DUNCAN  
& VIRGINIA DUNCAN  
DB 1585 PG 666

3  
ANNE M. BRYNE  
DB 5456 PG 1814  
PB 173 PG 142

4

4  
DEBORAH LOUISE COX  
DB 4907 PG 131

ERMA LEE REISING  
IRREVOCABLE TRUST  
DB 5664 PG 755

TIMOTHY SHIFFLETT  
DB 4857 PG 459  
PB 55 PG 172

ANNA LOUISE GREENE  
DB 4790 PG 245  
PB 55 PG 172

MARY JENNIFER  
SHIFFLETT  
DB 1525 PG 16  
PB 55 PG 172

BEGIN DETOUR  
-DET- STA. 10 + 00.00

END DETOUR  
-DET- STA. 16 + 43.00

SEE SHEET 4 FOR -L- PLAN  
SEE SHEET 5 FOR -DET- PROFILE

NOTE: MAINTAIN ALL DRIVEWAY ACCESS DURING CONSTRUCTION