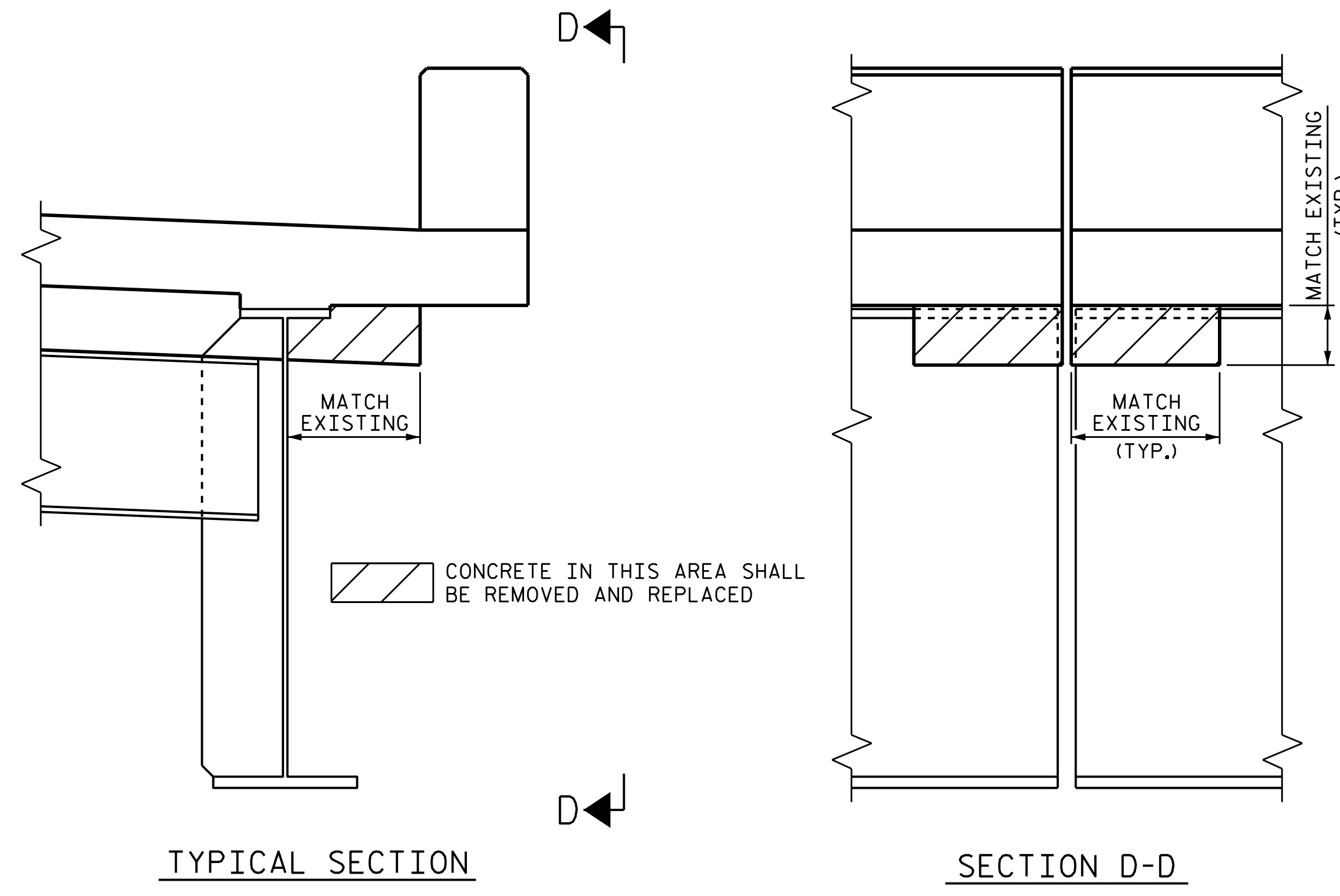
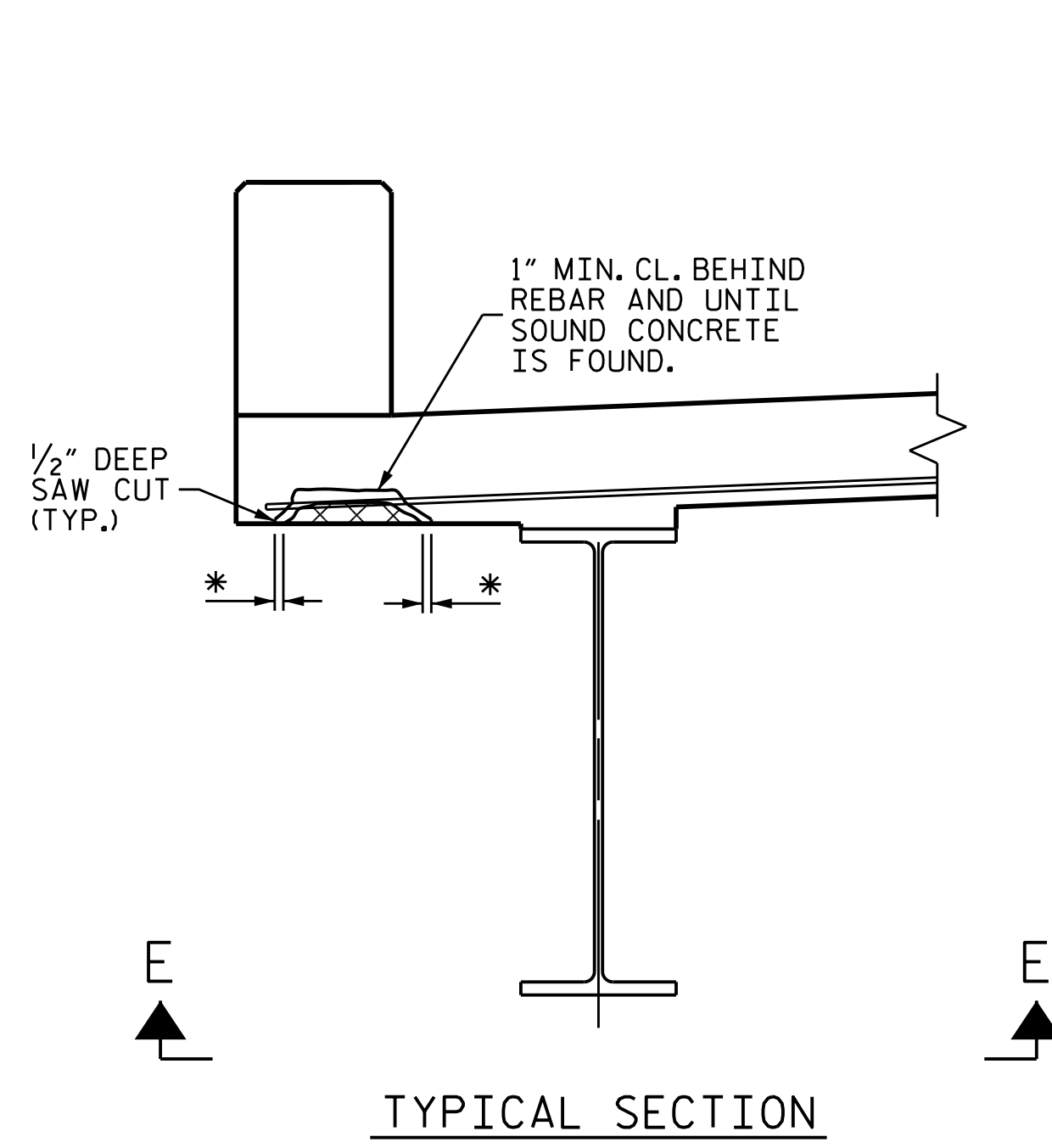
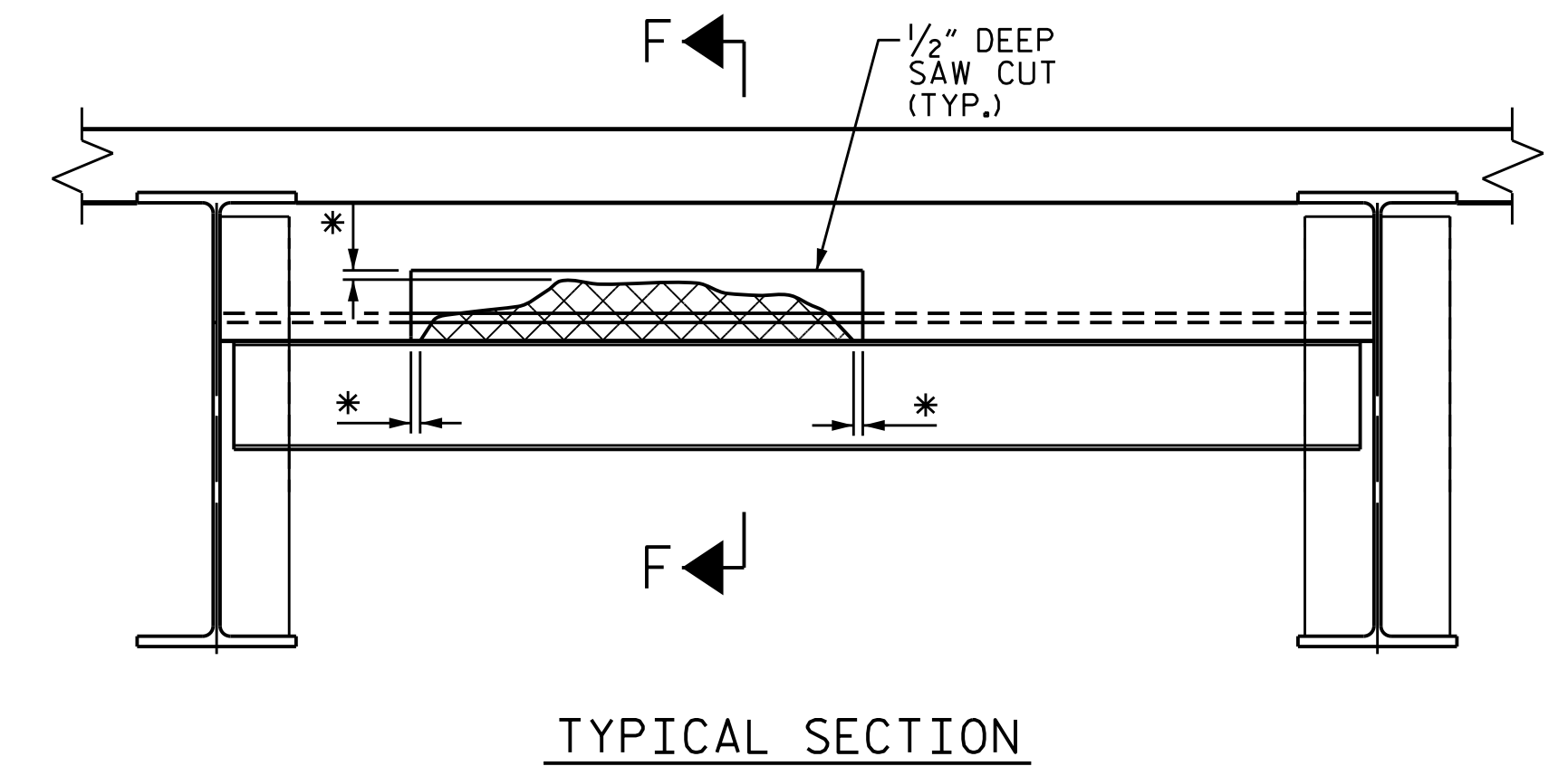


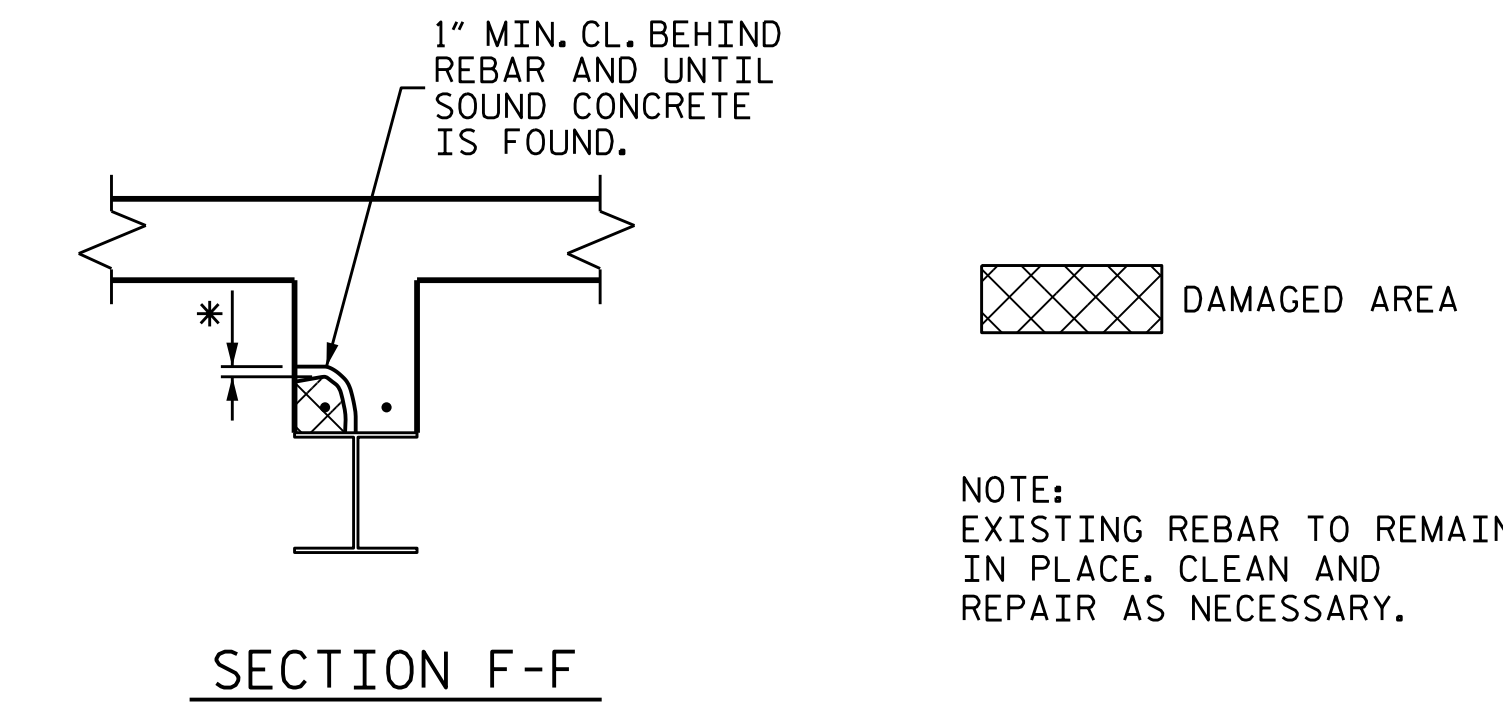
NOTE: OVERHANG DIAPHRAGMS TO BE REMOVED AND REPLACED, ARE SHOWN ON "PLAN OF SPAN" SHEETS. OVERHANG DIAPHRAGMS SHALL BE REMOVED PRIOR TO CLEANING AND PAINTING OF BEAMS AND REPLACED AFTER BEAM REPAIRS AND PAINTING ARE COMPLETE.



OVERHANG DIAPHRAGM REPLACEMENT DETAILS

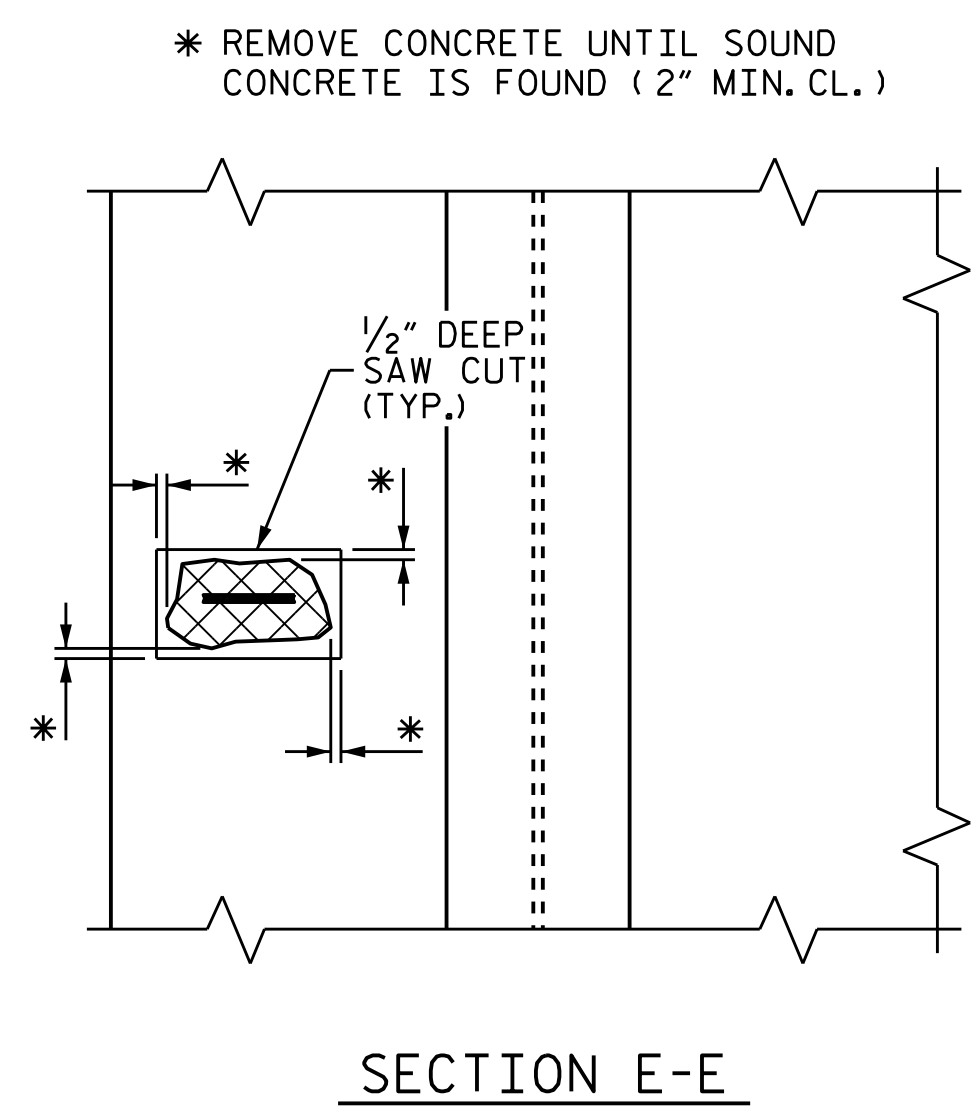


* REMOVE CONCRETE UNTIL SOUND CONCRETE IS FOUND (2" MIN. CL.)



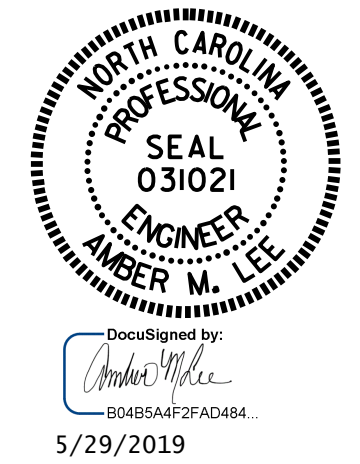
NOTE: EXISTING REBAR TO REMAIN IN PLACE. CLEAN AND REPAIR AS NECESSARY.

INTERIOR DIAPHRAGM REPAIR DETAILS



OVERHANG DETAILS

PROJ. NO. 15BPR.40
BUNCOMBE COUNTY
 BRIDGE NO. 100481, 100495,
100705



STATE OF NORTH CAROLINA
 DEPARTMENT OF TRANSPORTATION
 RALEIGH
 OVERHANG, DIAPHRAGM
 AND BRIDGE RAIL
 REPAIR DETAILS

DRAWN BY : R.L. PUTEK DATE : 08/2018
 CHECKED BY : A.M. LEE, PE DATE : 08/2018

REVISIONS						SHEET NO.
NO.	BY:	DATE:	NO.	BY:	DATE:	SD-06
1			3			TOTAL SHEETS
2			4			6

DOCUMENT NOT CONSIDERED FINAL UNLESS ALL SIGNATURES COMPLETED