

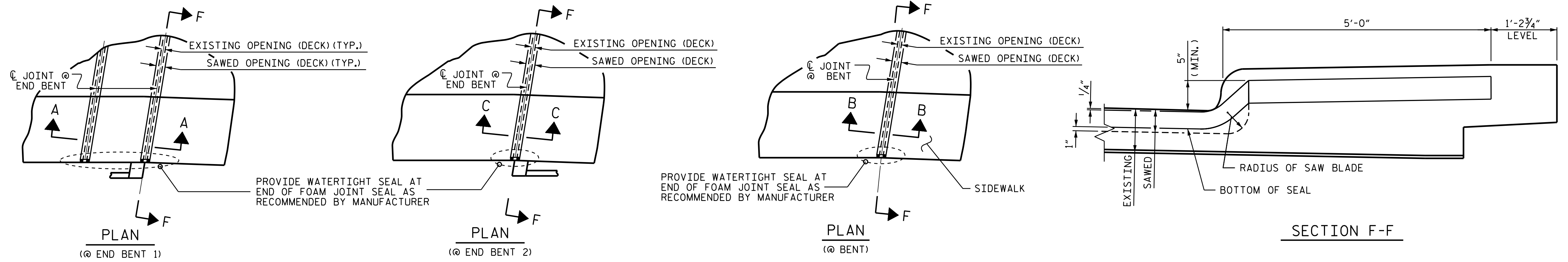
NOTES

EXISTING MODULAR EXPANSION JOINT DETAIL ARE SHOWN FOR INFORMATION ONLY. ACTUAL FIELD CONDITIONS MAY VARY. THE CONTRACTOR SHALL HAVE NO CLAIM WHATSOEVER AGAINST THE DEPARTMENT IF ACTUAL CONDITIONS VARY FROM WHAT IS SHOWN IN THESE PLANS.

THE CONTRACTOR SHALL HAVE A REPRESENTATIVE FROM THE JOINT MANUFACTURER PRESENT DURING INSTALLATION OF PROPOSED EXPANSION JOINT SEAL.

ALL EXPOSED ENDS OF CUT BARS SHALL BE COATED WITH EPOXY PRIOR TO THE NEW JOINT MATERIAL INSTALLATION.

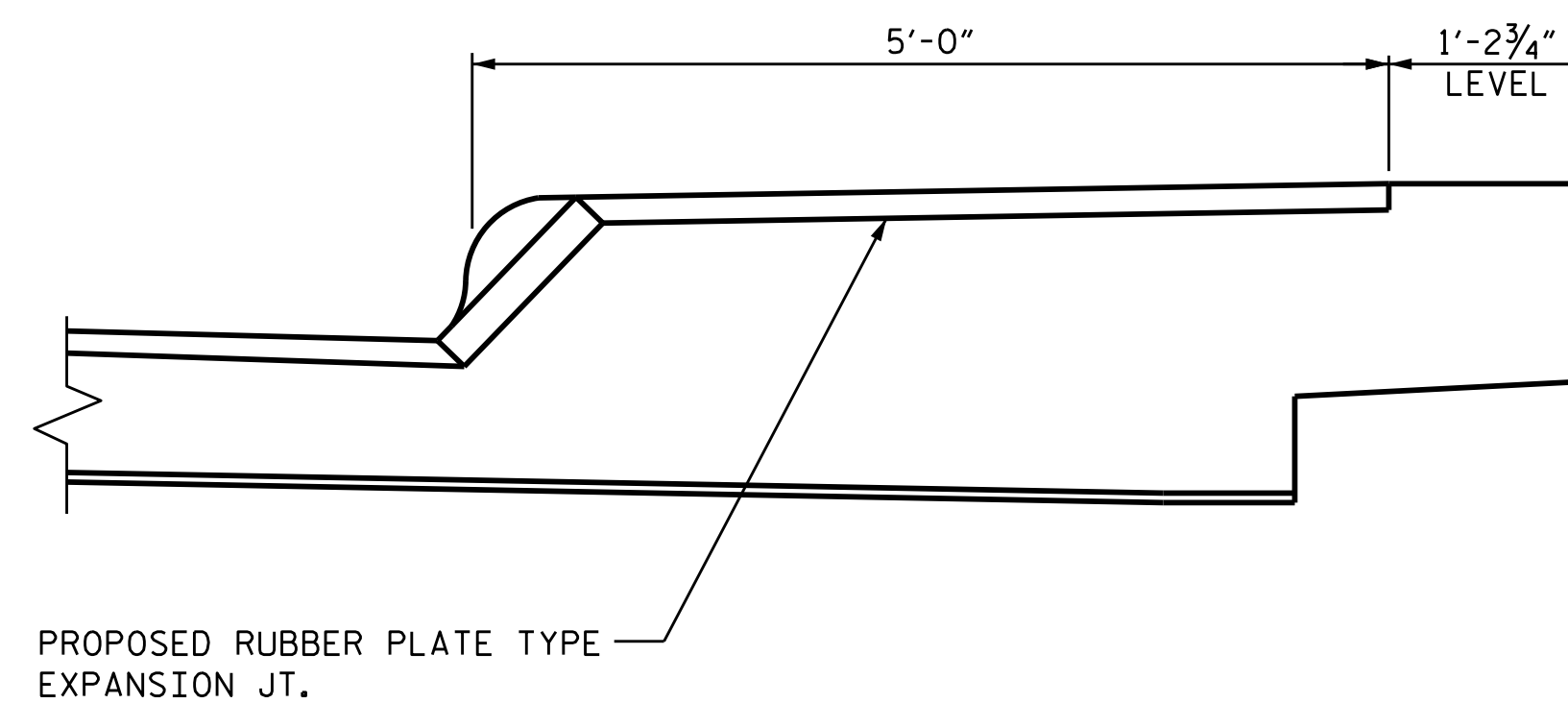
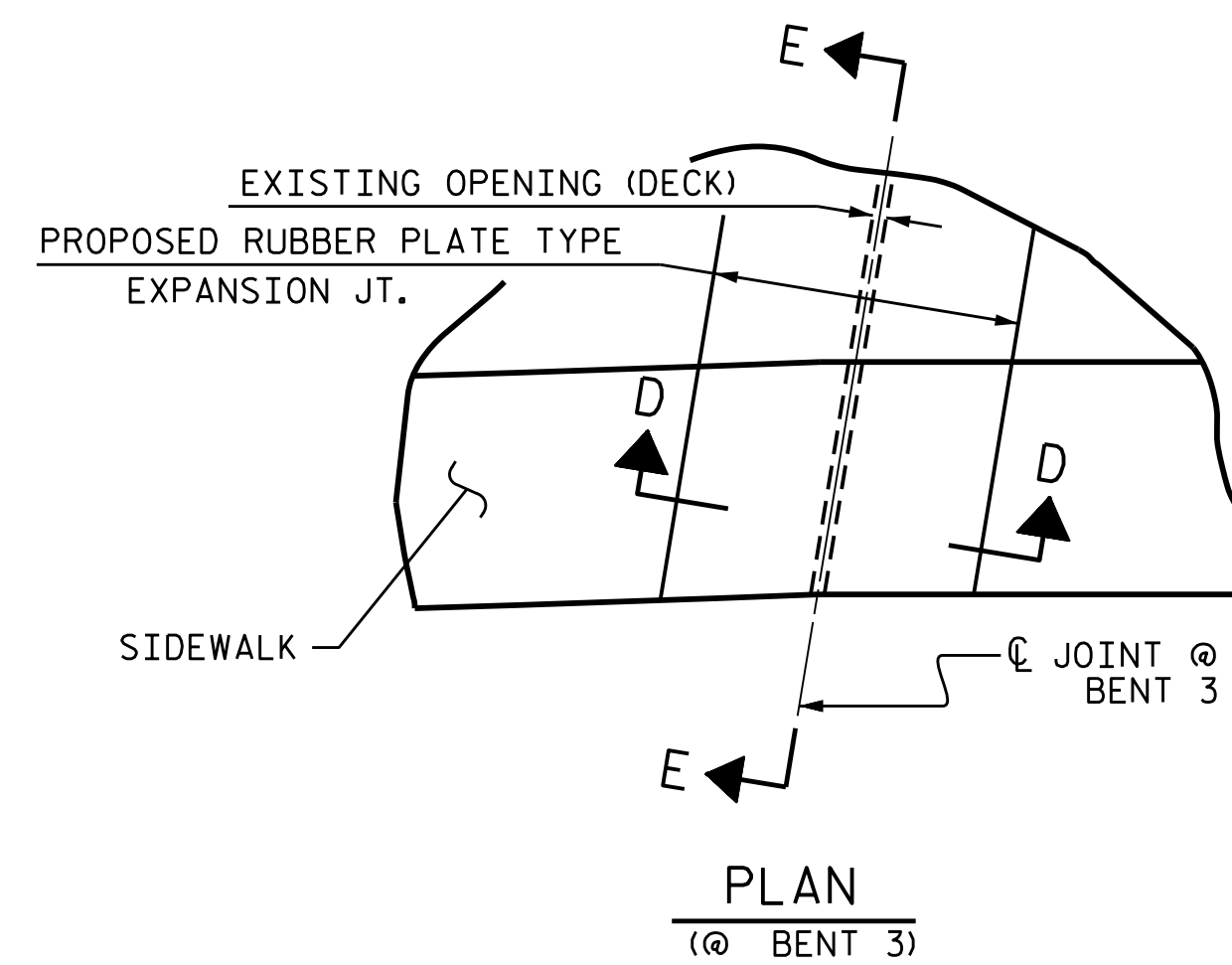
THE CONTRACTOR SHALL PREPARE THE BOTTOM SURFACE OF BLOCKOUT TO BE PARALLEL WITH THE PLANE OF THE ROADWAY AND PROVIDE A UNIFORM SURFACE.



FOAM JOINT SEAL DETAILS THRU SIDEWALK

(FOR SECTION A-A, B-B AND C-C, SEE SHEET 1 OF 3)

DEMOLISH BRIDGE JOINT AREA TO THE NECESSARY DEPTH, SUCH THAT ELASTOMERIC CONCRETE SHALL BE FOUND ON CONCRETE OR REPAIR CONCRETE SUBSTRATE, NOT LATEX MODIFIED CONCRETE.

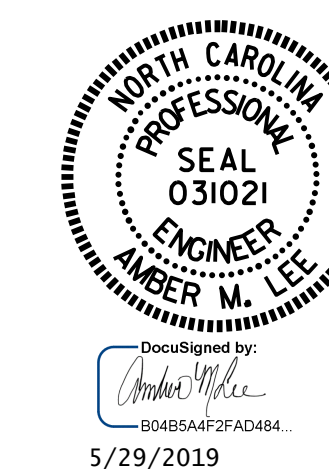


MODULAR JOINT SEAL DETAILS THRU SIDEWALK

(FOR SECTION D-D, SEE SHEET 2 OF 3)

PROJECT NO. 15BPR.40
BUNCOMBE COUNTY
 BRIDGE NO. 100705

SHEET 3 OF 3



STATE OF NORTH CAROLINA
 DEPARTMENT OF TRANSPORTATION
 RALEIGH

**JOINT DETAILS
 LMC OVERLAY**

REVISIONS						SHEET NO.
NO.	BY:	DATE:	NO.	BY:	DATE:	S3-22
1			3			TOTALS
2			4			36

DOCUMENT NOT CONSIDERED FINAL UNLESS ALL SIGNATURES COMPLETED

DRAWN BY : M. G. SHAIKH DATE : 02/2019
 CHECKED BY : A. M. LEE DATE : 03/2019